

RESERVE ACTION SHEET - CONSERVATION RESERVES

RESERVE No. 44667 & 44668

REASON FOR ACTION

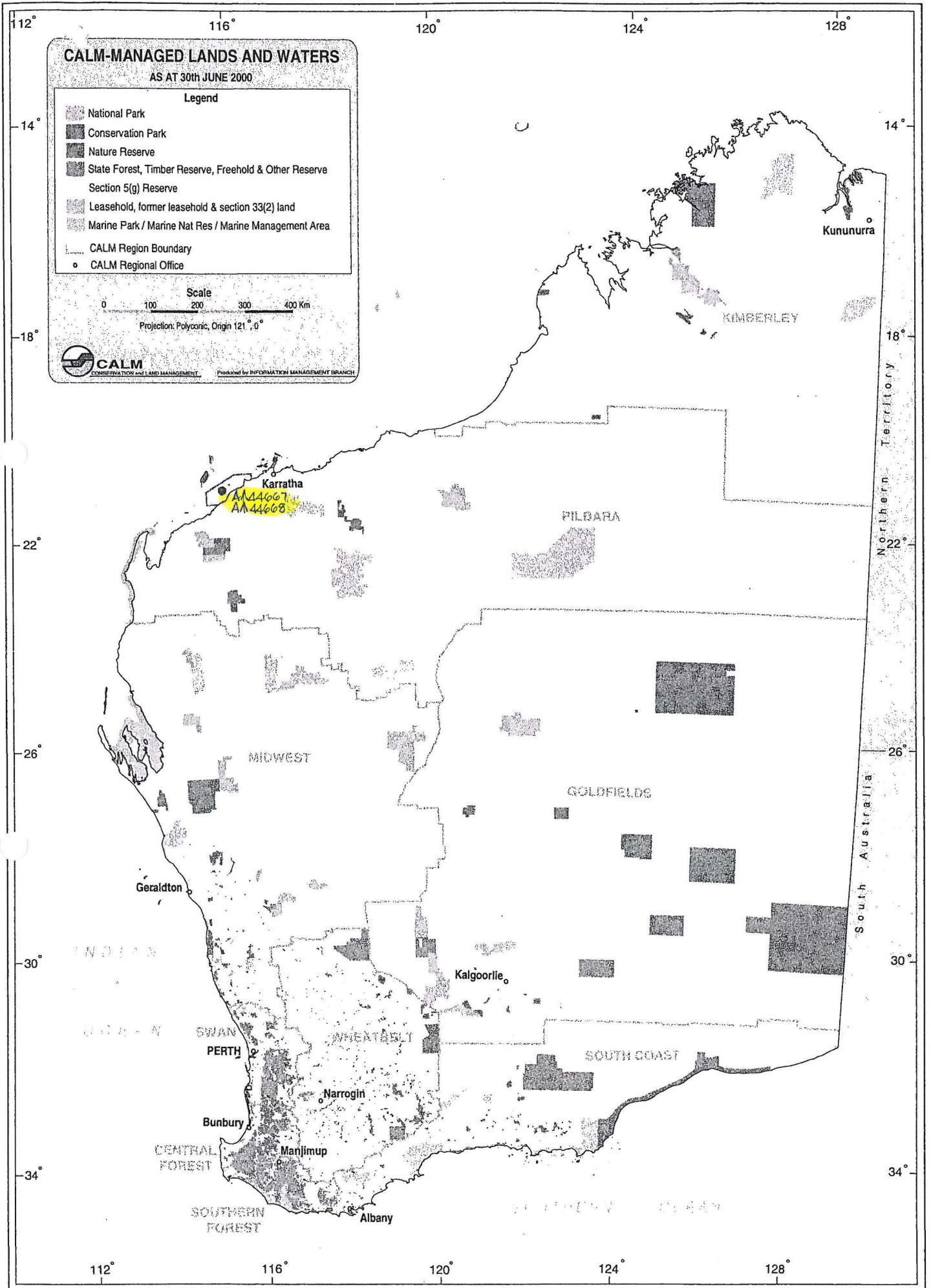
The creation of a 5(1)(h) reserve for the purpose 'Conservation, Navigation, Communication, Meteorology and Survey' and the creation of a new nature reserve for the purpose 'Conservation of Flora and Fauna', both vested in the Conservation Commission.

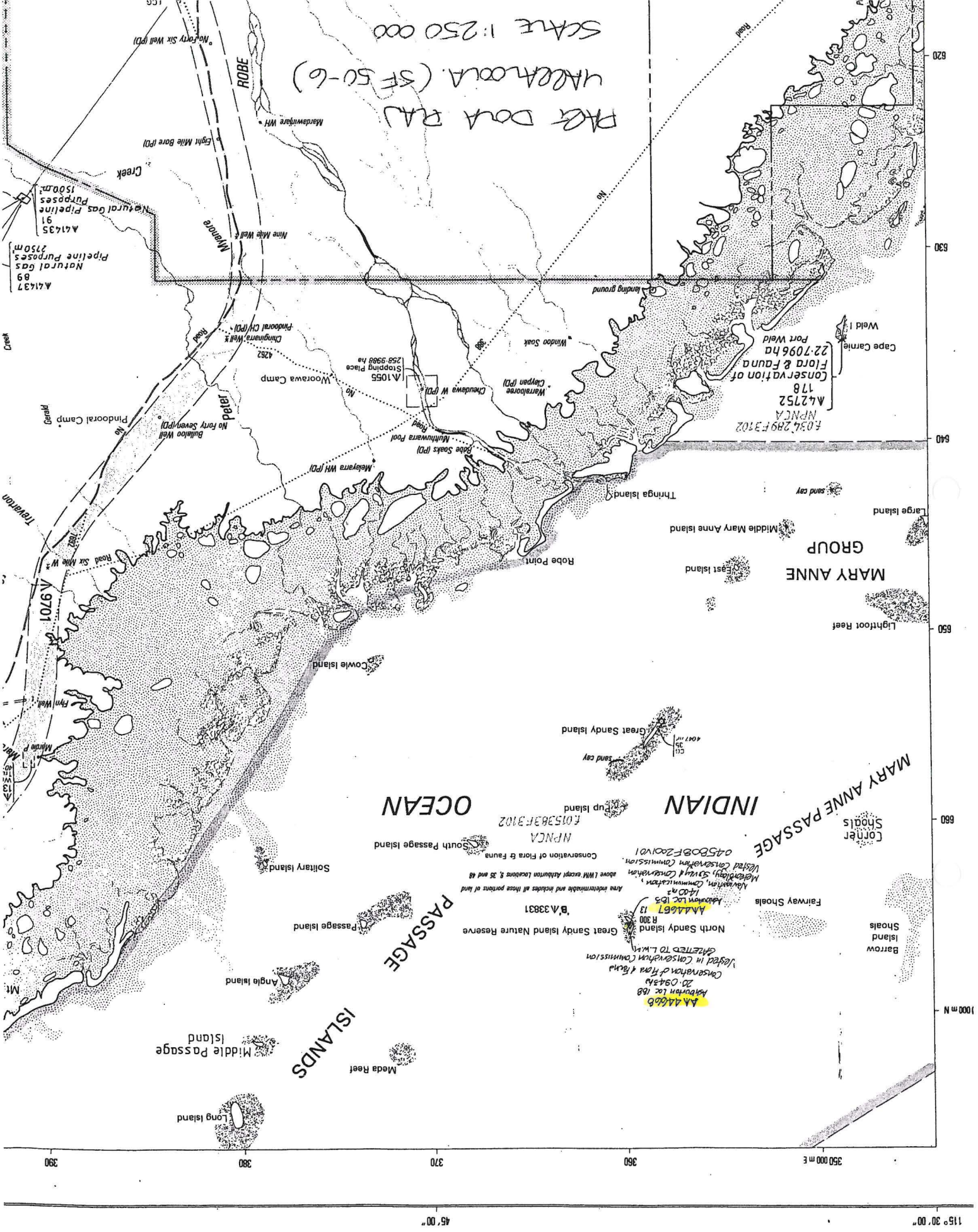
Area: 0.14 & 20.09 hectares

Due to increasing use of satellite aided navigation and AMSA'S desire to rationalise it's property holdings the Commonwealth has been divesting properties containing lighthouses and marine navigational aids. Reserve 44667 on North Sandy Island is a former AMSA property which will be leased back to AMSA to permit continued operation of lighthouse facilities. Reserve 44668 on North Sandy Island is a former AMSA property, which will now be managed as a nature reserve.

- Date of DOLA's advice: 4 December 2000 See folio: 20
- Plans at folios: 22,21,8

OFFICER	ACTION
1 CONSERVATION ESTATE OFFICER	<ul style="list-style-type: none"> - Fill in above details _____ - Attach copies of DOLA's advice to file _____ <p>Send copies of advice & maps to:</p> <ul style="list-style-type: none"> - Lisa Wright, Woodvale _____ - Regional Manager, Pilbara _____ <p>Recommended IUCN classification: <u> V &1a </u></p>
2 LAND ACQUISITIONS OFFICER	To note: _____
3 MANAGER, PLANNING & VISITOR SERVICES	To note & approve IUCN classification: _____
4 DIRECTOR, NATURE CONSERVATION/ NATIONAL PARKS	To note: _____
5 INDEX CLERK, RECORDS	To note: _____
6 CONSERVATION ESTATE OFFICER	Attach copy of Reserve Details to inside cover of new file _____





SCALE 1:250 000
 ARRALOOLA (SF 50-6)
 PAGE DATA RAU

A41437
 Natural Gas Pipeline
 Purposes 2750m
 89
 A41435
 Natural Gas Pipeline
 Purposes 1500m
 91

Conservation of
 Flora & Fauna
 NPNC
 A42752
 178
 227096ha
 Port Weir
 Cape Carmel
 Weir 1

AA 44660
 20-0943h
 Abandon Loc 168
 Conservation of Flora & Fauna
 Listed in Conservation Commission
 DEDICATED TO L.W.V.

Area indeterminate and includes all those portions of land
 above L.M.F. except Abandon Locations 25 and 48
 Navigation, Communication
 Meteorology, Survey
 Conservation Commission
 045808F2001V1

NPNC
 Conservation of Flora & Fauna
 F015363F3102

INDIAN OCEAN

MARY ANNE PASSAGE

ISLANDS

**Customer Advices for Reserve Actions
1/04/2001 - 30/04/2001**

1/04/2001 - 30/04/2001

Reserve No.	Land Description	DOLA File No.	Volume/Folio	Action	Document No.	Registered	Street Name	Area	Public Plans
19400	Kyarra District	01500-1998-01RO	3115-401	Amendment of Reserve to comprise Kyarra Locallon 222 on Land Administration Miscellaneous Diagram 94638 and its area being reduced (recalculated) to 3.0251 ha.	H601810	20/11/2000		3.0251 Ha	Cue (100,000)
3688	Ballingup Lot	01985-2000-01RO	0000-000	Reserve Cancellation "Railway Purposes"	H604668	23/11/2000		0 sqm	
3870	Bridgetown Lot 25 on Land Administration Plan Bridgetown 26/2	01985-2000-01RO	0000-000	Reserve Cancellation "Resting Place for Travellers & Stock"	H604667	23/11/2000		0 sqm	
41354			3054-823	Revocation of Management Order () for the designated purpose of ""	H612353	04/12/2000		0 sqm	
41354	Ashburton Location 48 on Land Administration Reserve Diagram 853		3054-823	Change of Purpose to "Navigation, Communication, Meteorology & Survey."	H612352	04/12/2000		0 sqm	
44660	Sussex Location 5049 on Land Administration Miscellaneous Diagram 544 Sussex Location 5050 on Land Administration Miscellaneous Diagram 544 Sussex Location 5076 on Land Administration Miscellaneous Diagram 544		3087-4	Reserve Creation for the designated purpose of "National Park, Tourism, Navigation, Communication, Meteorology and Survey."	H612413	04/12/2000		0 sqm	
44665	Lyndon Location 225 on Land Administration Miscellaneous Diagram 541		3086-933	Reserve Creation for the designated purpose of "Navigation, Communication, Meteorology, Survey and Conservation."	H612447	04/12/2000		0 sqm	
44666	Lyndon Location 230 on Land Administration Reserve Diagram 1435		3108-300	Reserve Creation for the designated purpose of "Conservation of Flora and Fauna"	H612448	04/12/2000		0 sqm	
44667	Ashburton Location 183 on Land Administration Miscellaneous Diagram 553		3086-941	Reserve Creation for the designated purpose of "Navigation, Communication, Meteorology, Survey and Conservation."	H612452	04/12/2000		0 sqm	
44668	Ashburton Location 188 on Land Administration Reserve Diagram 1438		3108-299	Reserve Creation for the designated purpose of "Conservation of Flora and Fauna"	H612453	04/12/2000		0 sqm	
44673	Meda Location 28 on Land Administration Miscellaneous Diagram 539		3061-298	Reserve Creation for the designated purpose of "Navigation, Communication, Meteorology, Survey and Conservation."	H612383	04/12/2000		0 sqm	
44674	Meda Location 31 on Land Administration Miscellaneous Diagram 608		3107-596	Reserve Creation for the designated purpose of "Conservation of Flora and Fauna"	H612384	04/12/2000		0 sqm	
44675	Meda Location 37 on Land Administration Reserve Diagram 1433		3108-296	Reserve Creation for the designated purpose of "Conservation of Flora and Fauna"	H612386	04/12/2000		0 sqm	
44677	Marndoc Location 13 on Land Administration Miscellaneous Diagram 551		3061-297	Reserve Creation for the designated purpose of "Navigation, Communication, Meteorology, Survey and Conservation."	H612349	04/12/2000		0 sqm	
44678	Marndoc Location 14 on Land Administration Reserve Diagram 1434		3108-298	Reserve Creation for the designated purpose of "Conservation of Flora and Fauna"	H612398	04/12/2000		0 sqm	
44684	King Location 813 on Land Administration Diagram 92975		3107-792	Reserve Creation for the designated purpose of "Navigation, Communication, Meteorology and Survey."	H612281	04/12/2000		0 sqm	
44689	Broome Lot 3078 on Land Administration Miscellaneous Diagram 550		3086-977	Reserve Creation for the designated purpose of "Navigation, Communication, Meteorology, Survey and Conservation."	H612397	04/12/2000		0 sqm	

(Sb) + NR
 20

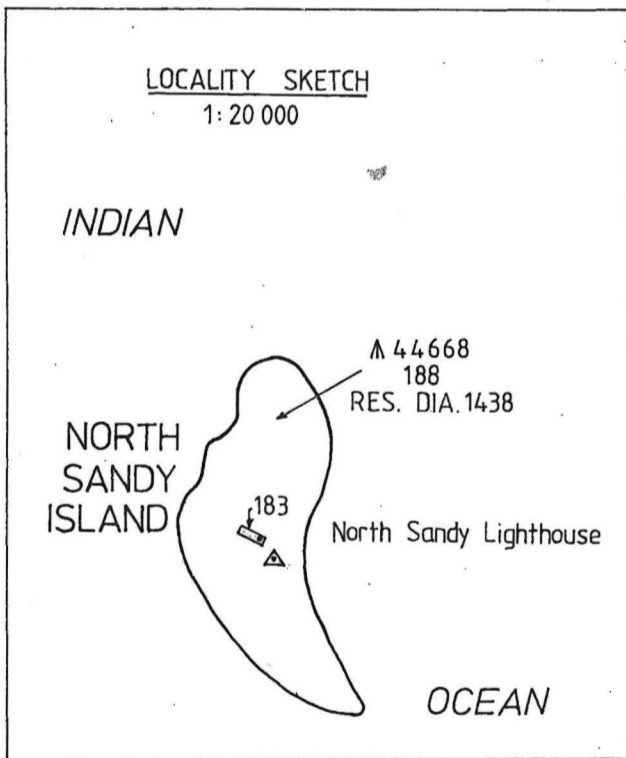
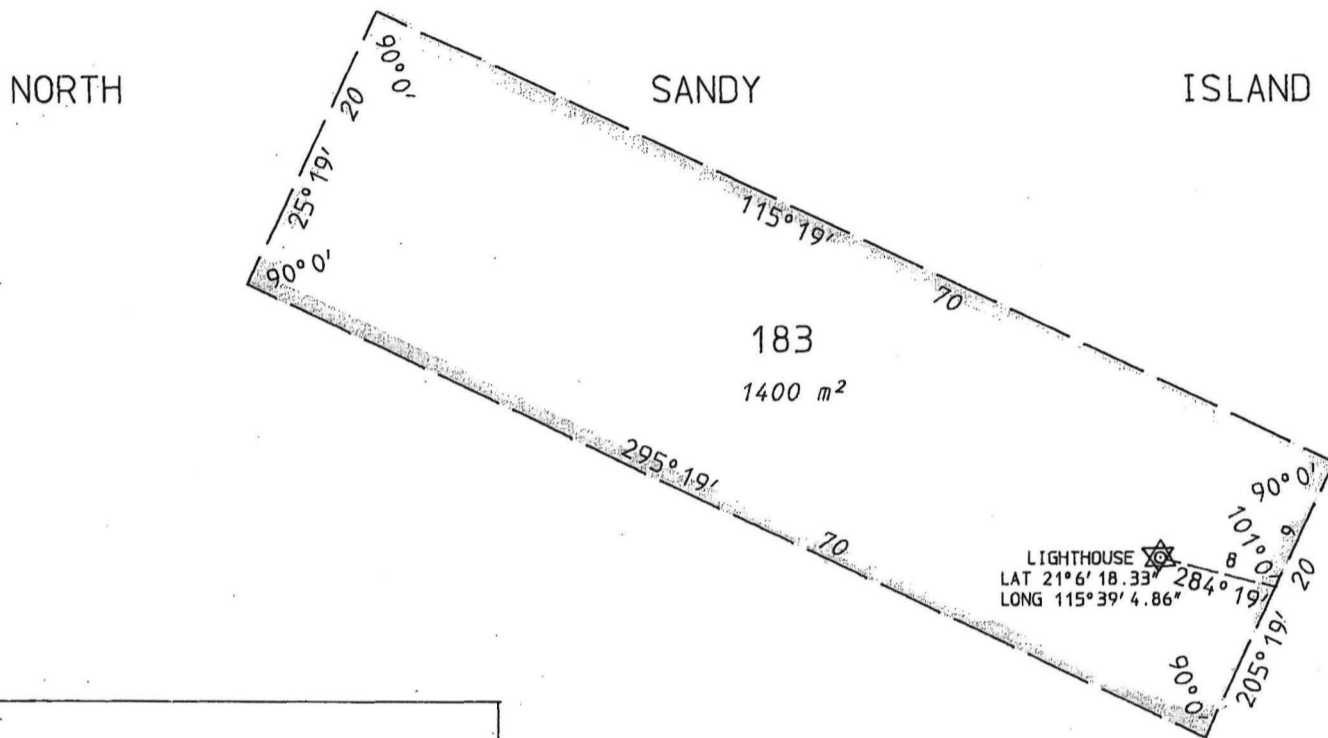
**Customer Advices for Reserve Actions
1/06/2001 - 30/06/2001**

Shire of Roebourne 1/06/2001 - 30/06/2001

Reserve No.	Land Description	DOLA File No.	Volume/Folio	Action	Document No.	Registered	Street Name	Area	Public Plans
18267	De Witt District	01138-1985-02RO	000-000	Amendment of Reserve to To include De Witt Location 512 on Land Administration Plan 19345 and its area remaining unaltered	H641169	10/01/2001	North West Coastal Highway	58.6794 sqm	Roebourne (25) NE
36813	Cossack Lots 106, 107, 124, 126, 168, 326 to 337 Inclusive, 422, 423, 442, 443 and 444 on Land Administration Plan Cossack Town Site 2/1	01392-1897-06RO	000-000	Amendment of Reserve to To now include Cossack Lot 448 on Land Administration Plan Cossack Town Site 2/1, Crown Land Title Volume 3025 Folio 547, and its area being increased to 4.9229 hectares	H621778	13/12/2000	between Cossack Rd & Perseverance St	4.9229 Ha	Cossack Townsite
44667		02081-1996-01RO	3086-941	Management Order to Conservation Commission of Western Australia C/- Department of Conservation and Land Management Locked Bag 104 Bentley Delivery Centre COMO W.A 6152 for the designated purpose of "Navigation, Communication, Meteorology, Survey and Conservation"	H651925	23/01/2001		0.14 Ha	Yarraloola (250)
611	De Witt Location 346 on Land Administration Miscellaneous Plan 19841 De Witt Location 347 on Land Administration Miscellaneous Plan 19841 De Witt Location 348 on Land Administration Miscellaneous Plan 19841 De Witt Location 349 on Land Administration Miscellaneous Plan 19841 De Witt Location 350 on Land Administration Miscellaneous Plan 19841	01138-1985-02RO	3111-35	Amendment of Reserve to To include De Witt Location 511 on Land Administration Plan 19345 and its area remaining unaltered	H641168	10/01/2001	North West Coastal Highway	2700.5644 sqm	Roebourne (25) NE

Dimensions shown hereon are SUBJECT TO SURVEY

FORMERLY PART LOCATION 9



A44668
188
RES. DIA. 1438

IN ORDER FOR DEALINGS

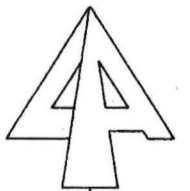
Subject to Revestment

Cr. 1245/271

M. J. Lucas 1. 11. 00
For Authorised Land Officer Date



Dept of Land Administration
UO 137263



Ashburton Location 183 created on this diagram.

Water lines on this diagram do not necessarily depict an exact cadastral boundary.

RESERVE No. A44667 AREA 1400 m ²		FILE No. 2081/996
Purpose Conservation and Lighthouse		SCALE 1:500 All measurements in metres
DISTRICT ASHBURTON		Gazetted Page
Public Plan YARRALOOOLA (250) (360.665)	SUBJECT TO SURVEY	
Reference Page	AMENDMENTS	
Prepared by AUSLIG Date	Gazette Page Initials	Recorded on Public Plan
Checked <u>Taylor</u> Date 6.6.96	DOC H 612449 REVESTED E. M.	Registered B. TAYLOR Date
Approved <u>M. J. Lucas</u> Date 28.1.97	DOC H 612452 A 44667 CREATED E. M.	For Manager Statutory Services
Manager Statutory Services		Survey Index Plan YARRALOOOLA (250)
		DEPT. OF LAND ADMINISTRATION
		MISCELLANEOUS
		DIAGRAM No. 553