

RESERVE ACTION SHEET - CONSERVATION RESERVES

RESERVE No. 44709

REASON FOR ACTION

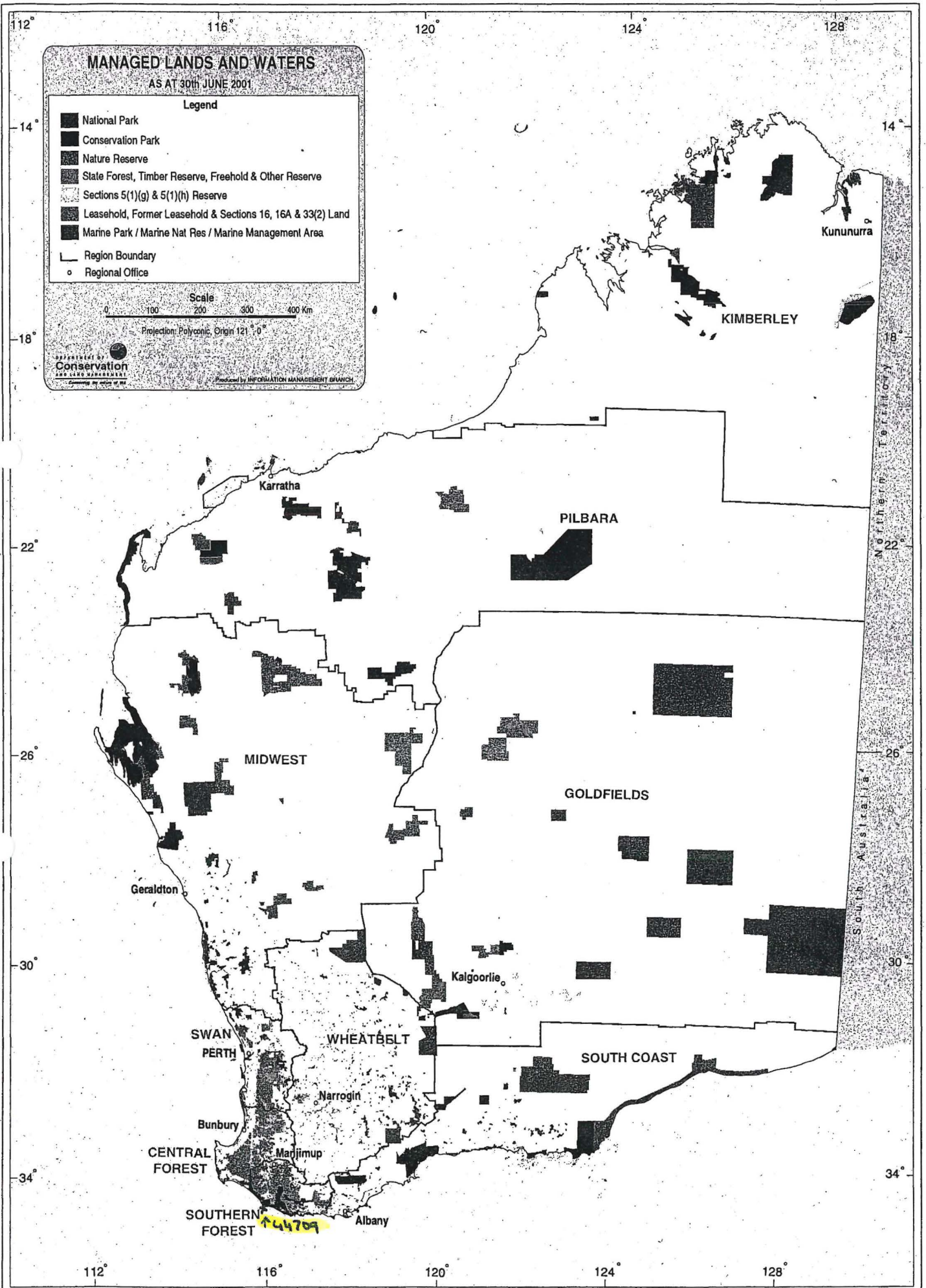
The creation of a 5(1)(h) reserve with a management order issued to the Conservation Commission for the purpose Navigation, Communication, Meteorology, Survey and Conservation'.

Area: 0.14 hectares

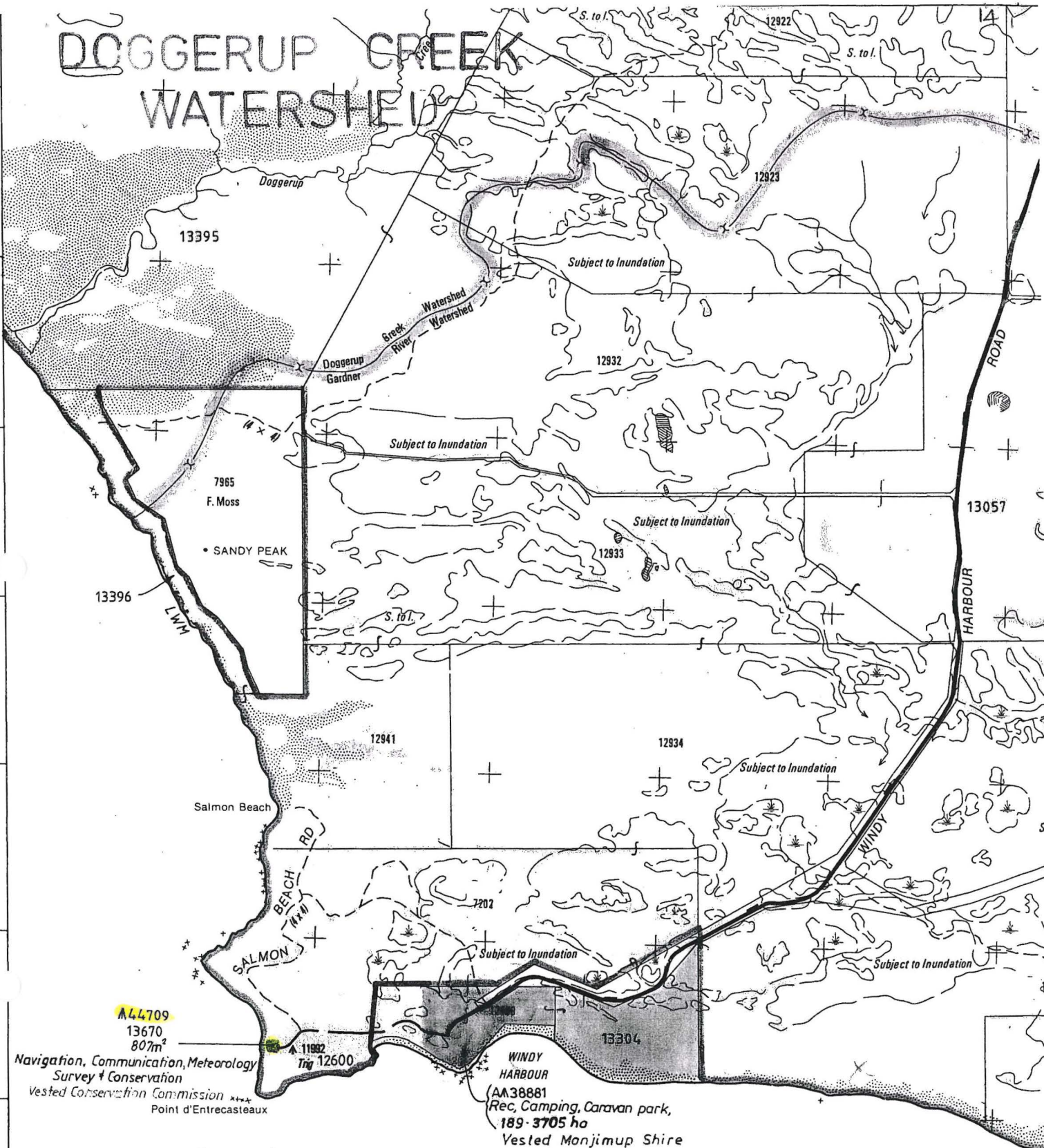
Due to increasing use of satellite aided navigation and AMSA'S desire to rationalise it's property holdings the Commonwealth has been divesting properties containing lighthouses and marine navigational aids. Reserve 44709 in D'Entrecasteaux National Park is a former AMSA property which will be leased back to AMSA to permit continued operation of lighthouse facilities.

- Date of DOLA's advice: 17 May 2001 See folio: 13,11
- Plans at folios: 15,14

OFFICER	ACTION	
1	CONSERVATION ESTATE OFFICER	<ul style="list-style-type: none"> - Fill in above details _____ ✓ - Attach copies of DOLA's advice to file _____ ✓ <p>Send copies of advice & maps to:</p> <ul style="list-style-type: none"> - Lisa Wright, Woodvale _____ ✓ - District Manager, Manjimup _____ ✓ - Regional Manager, Manjimup _____ ✓ <p>Recommended IUCN classification: _____ V</p>
2	LAND ACQUISITIONS OFFICER	To note: _____
3	MANAGER, PLANNING & VISITOR SERVICES	To note & approve IUCN classification: _____
4	DIRECTOR, NATURE CONSERVATION/ NATIONAL PARKS	To note: _____
5	INDEX CLERK, RECORDS	To note: _____
6	CONSERVATION ESTATE OFFICER	Attach copy of Reserve Details to inside cover of new file _____



DOGGERUP CREEK WATERSHED



Navigation, Communication, Meteorology
Survey & Conservation
Vested Conservation Commission
Point d'Entrecasteaux

WINDY HARBOUR
AA38881
Rec, Camping, Caravan park,
189-3705 ha
Vested Monjimup Shire

Vested in NPNC
FLAT ISLAND
Pt. A A 25027
Cons. of Flora and Fauna
'QUAGERING NAT. RES'
(32-7795 ha)
12-5453 ha

Vested in NPNC
'QUAGERING NAT. RES.'
SANDY ISLAND
Pt. A A 25027
Con. Flora & Fauna
20-2343 ha

ON PART CALM RAJ.
BROKE INLET.
SCALE 1:50 000.

**Customer Advices for Reserve Actions
1/07/2001 - 31/07/2001**

Shire of Manjimup 1/07/2001 - 31/07/2001

Reserve No.	Land Description	DOLA File No.	Volume/Folio	Action	Document No.	Registered	Street Name	Area	Public Plans
41910		02230-1991-01RO	3117-128	Management Order to Shire of Manjimup of Post Office Box 1, Manjimup for the designated purpose of "Aged Persons Home"	H748063	15/05/2001	Banksia Street	8225 sqm	Bg27 (2) 30.08
41910		02230-1991-01RO	3117-128	Revocation of Management Order (Shire of Manjimup of Post Office Box 1, Manjimup) for the designated purpose of "Aged Persons Home".	H748062	15/05/2001	Banksia Street	8225 sqm	Bg27 (2) 30.08
44709		02687-1959-02RO	3121-247	Management Order to Conservation Commission of Western Australia C/- Department of Conservation and Land Management Locked Bag 104 Bentley Delivery Centre COMO WA 6152 To be used for its designated purpose only, for the designated purpose of "Navigation, Communication, Meteorology, Survey and Conservation."	H752438	18/05/2001		405 sqm	GARDNER RIVER NW PT BLACK HEAD NE 1:25000

② Crabtree Hoare : for Jen
GWA
for plans please
S. COLLIER
16.8.01,

US
Henry Sheehy -
A new lighthouse reserve
at Point D'Entrecasteaux
which requires a new file.
Also for inclusion in the
Conservation Summary.

S(h) []