

**Customer Advices for Reserve Actions
1/11/2004 - 30/11/2004**

City of Stirling 1/11/2004 - 30/11/2004

Reserve No.	Land Description	DOLA File No.	Volume/Folio	Action	Document No.	Registered	Street Name	Area	Public Plans
23680	Lot 5331 on Deposited Plan 206015 Lot 5332 on Deposited Plan 206015 Lot 7120 on Deposited Plan 156687 Lot 7663 on Deposited Plans 231175 and 231202	03662-1953-01RO	3044-904 3044-904 3044-904 3044-904	Amendment of Reserve to To now comprise Lot 15125 on Deposited Plan 37266, and with its area being reduced to 7.9202 hectares, accordingly.	1564926	23/07/2003	Adjacent to Woodsome, Stancliffe, Bradford and Learoyd Streets, Mount Lawley.	7.9202	BG34 (2) 14.28
45772	Lot 504 on Office of Titles Diagram 93115.	01746-1999-01RO	3115-285 3115-285	Management Order to Conservation Commission of Western Australia, Locked Bag 104, BENTLEY DELIVERY CENTRE WA 6983 To be utilised for the designated purpose of "Conservation and Recreation" only. for the designated purpose of "Conservation and Recreation"	J045406	07/10/2004	Honeyeater Circle	4706 sqm	BG34(2) 10.27

31/1/05
~~Crishmond Jen~~
 Please provide plans.
 VIN.

Reserve 45772

31900
HERDS TOWN

421

4.9587 ha



R 45773

503
239 m²

R 45772

504
4706 m²

R 31906
HERDS SUB
470
3375 m²

0
2 m²

201
436 m²

202
408 m²

203
408 m²

204
408 m²

205
418 m²

206
450 m²

207

208

209

HONEYEATER CIR

214
460 m²

215
529 m²

213
400 m²

212
400 m²

211
417 m²

227
459 m²

210
421 m²

216
534 m²

226
448 m²

217
534 m²

225
425 m²

218
534 m²

224
425 m²

230
410 m²

229
408 m²

219
519 m²

223
425 m²

231
401 m²

248
411 m²

220
500 m²

222
425 m²

232
401 m²

247
407 m²

221
422 m²

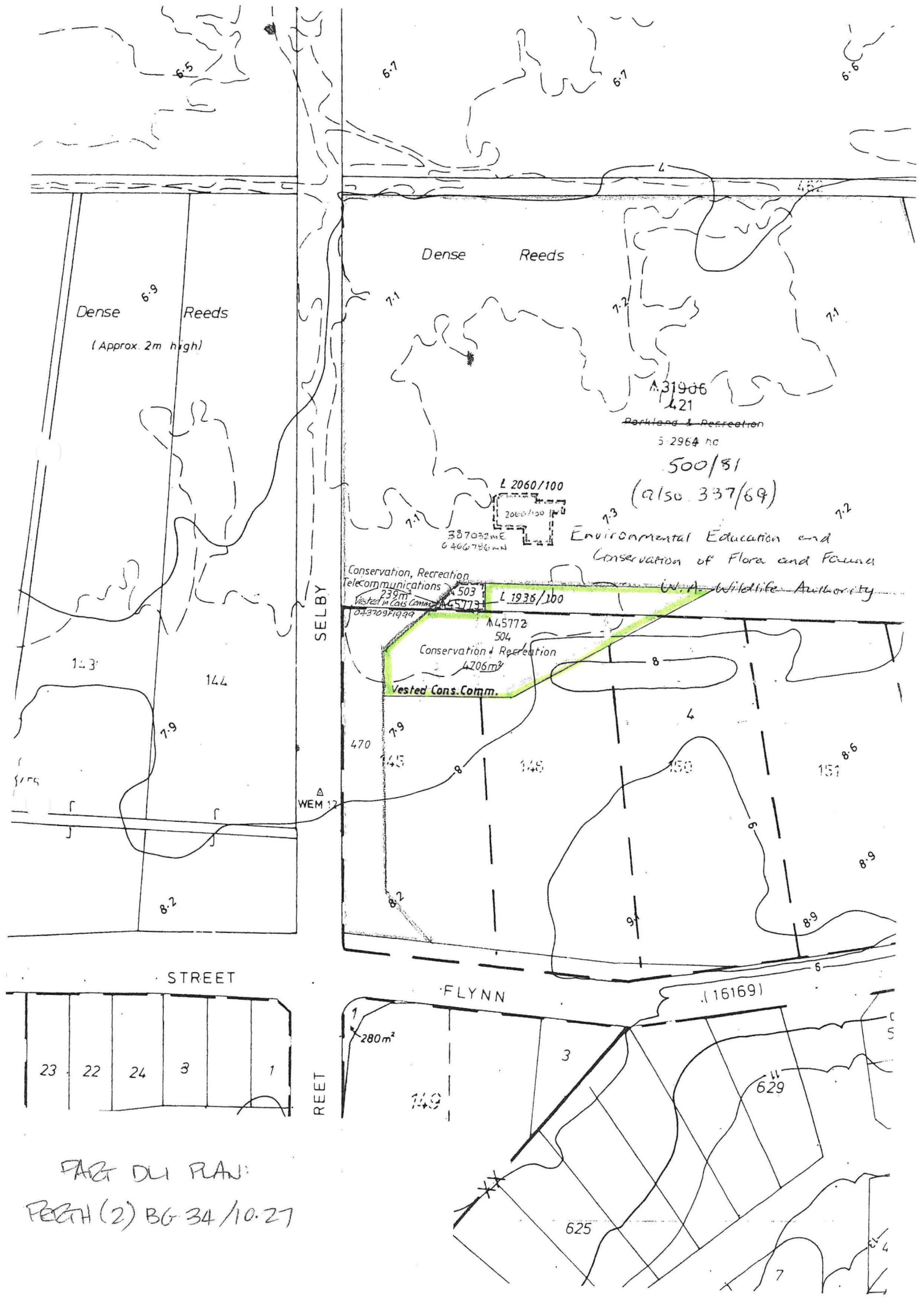
233
423 m²

HONEYEATER CIR

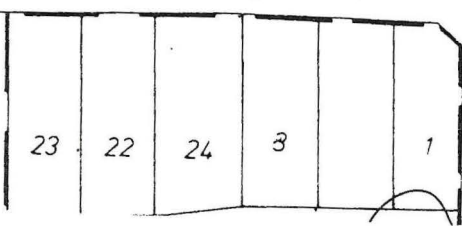
Scale : 1:1000 (MGA)
MGA : SW=386958.207,6466603.106 Zone 50 / NE=387159.64,6466866.053 Zone 50
Lat/Long : 115°48'14.976",-31°55'51.123" / 115°48'22.756",-31°55'42.657" 263* 201

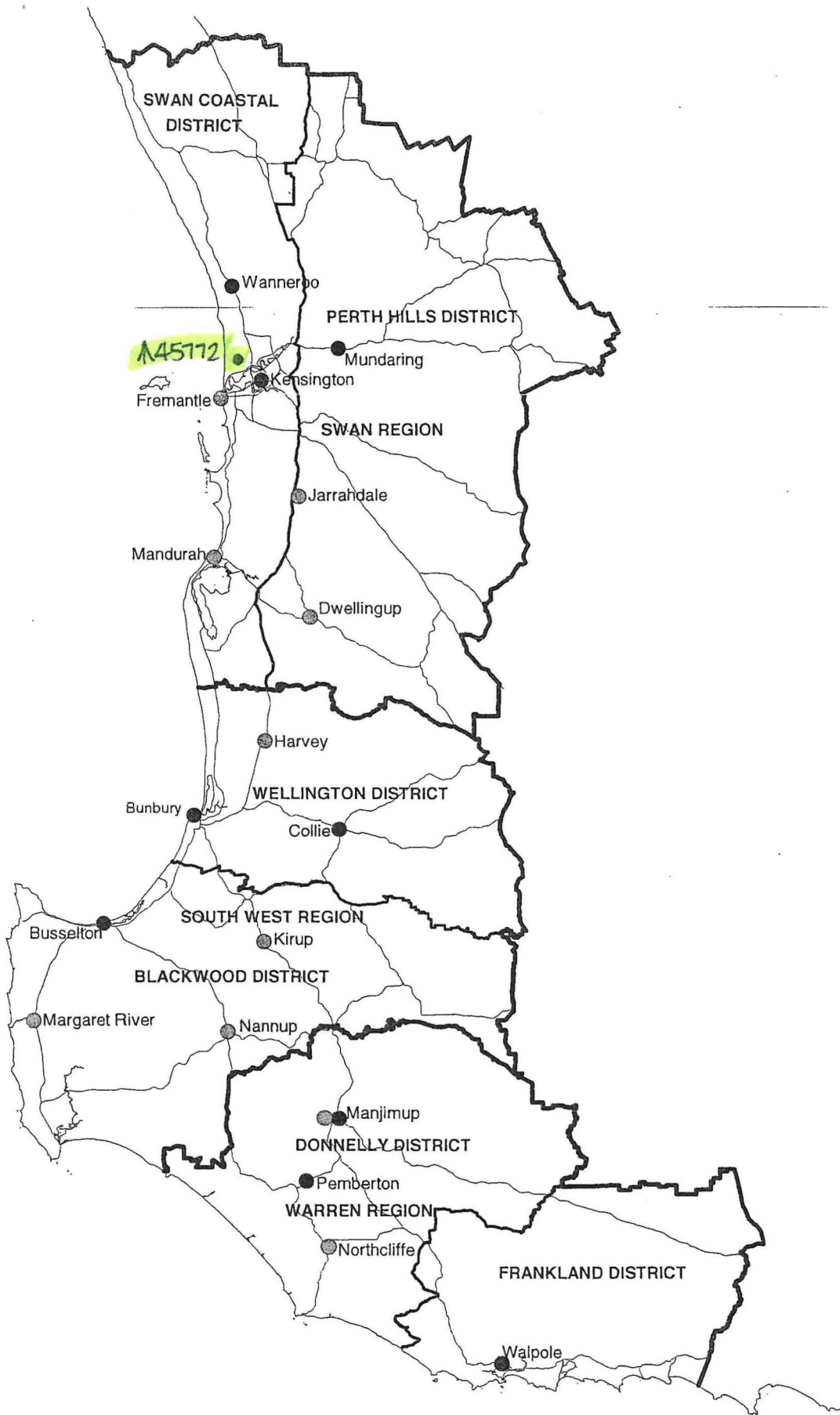
Printed : 09:25 Tue 30/Nov/2004
Crown Copyright Reserved May 1997

This product is for information purposes only and is not guaranteed. The information may be out of date and should not be relied upon without further verification from the original documents. Where the information is being used for legal purposes then the original documents must be searched for all legal requirements.



PART DU PLAN:
 PERTH (2) BG 34/10.27





**DEPARTMENT OF CONSERVATION AND LAND MANAGEMENT
 REGION AND DISTRICT BOUNDARIES - SOUTH WEST W A
 OCTOBER 2001**