

RESERVE ACTION SHEET: CONSERVATION RESERVES

RESERVE Nos. 46982, 46983, 46984 **LOCAL GOVERNMENT:** Shire of Carnamah

NAME : Un-named

PURPOSE: Conservation & Marl Extraction **VESTING:** Conservation Commission

ACTION:

Creation of three 'Conservation and Marl Extraction' reserves (excisions from Reserve 24496).

TOTAL AREA: 81.5452 ha (Reserve 46982); 18.8907 ha (Reserve 46983); and 14.69 ha (Reserve 46984).

REASON FOR ACTION

The excisions were effected from Reserve 24496 in December 2002. DPI originally erroneously created the Reserves with purposes of 'Marl Extraction' and did not issue management orders. Marl is to be used as road base for roads constructed by DEC within the conservation estate. The error has been corrected. New Management Orders for Reserve 46982, 46983 and 46984 have been issued in favour of the Conservation Commission pursuant to Section 5(1)(h) of the CALM Act 1984 for the purpose of 'Conservation and Marl Extraction'.

Date of amendment: 15/01/2007

Maps: pp. 28-29

Customer advice: p. 27

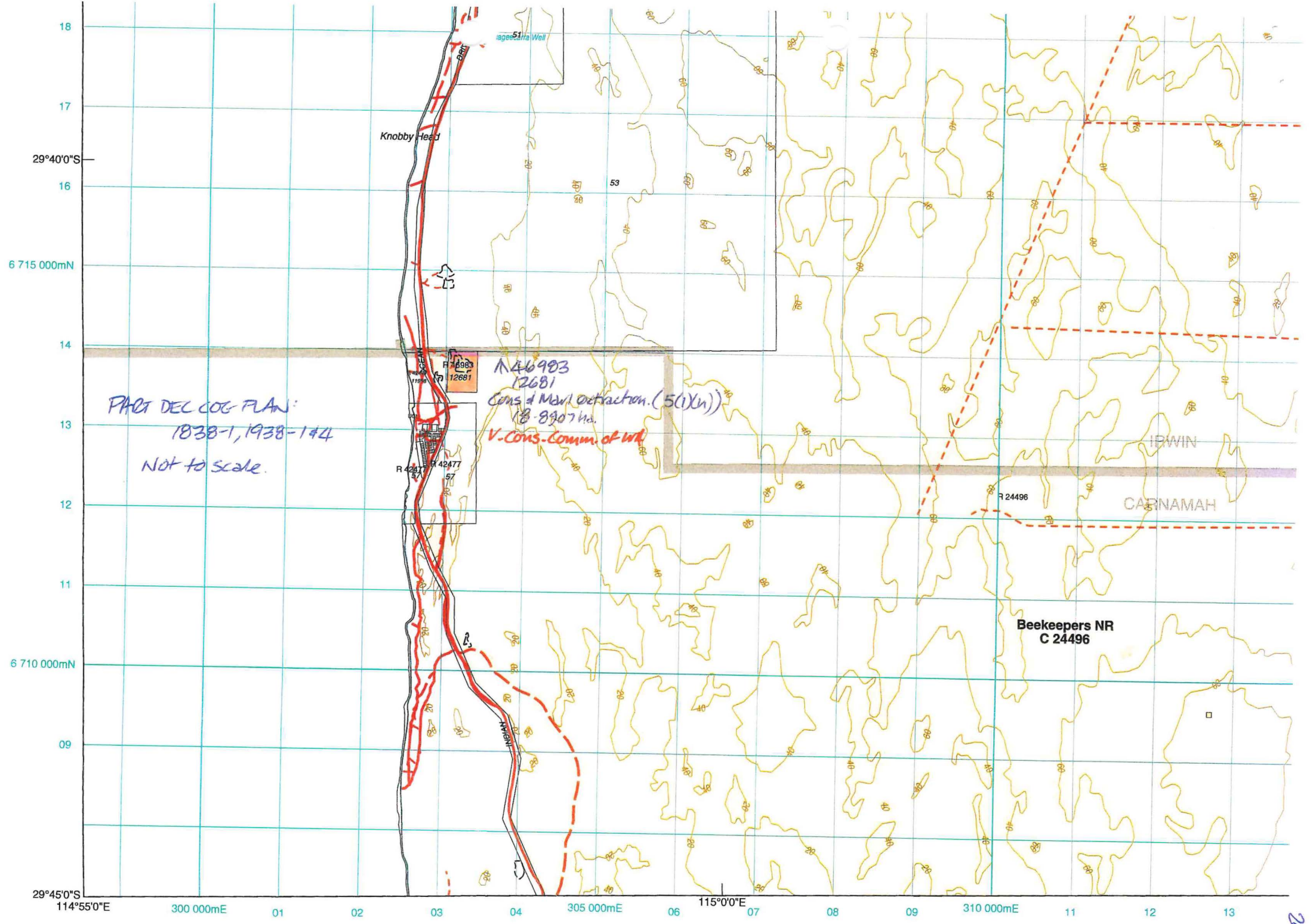
Summary of Action: see p. 33

Background Information: p. 26

Recommended IUCN classification: (to be advised)

NATIVE TITLE: Land was previously part of Reserve 24496 which was vested pre-23 December 1996; therefore Native Title has been extinguished (Ward High Court Decision).

1	LAND SERVICES CO-ORDINATOR	To note	<i>R/S for SC</i>
2	LAND & EXTERNAL FUNDING UNIT	Send copies of advice and maps to: <ul style="list-style-type: none"> • Lisa Wright (Woodvale) • District Manager • Regional Manager Attach TENIS gazettal history to file Add report to Conservation Commission summary	
3	SENIOR POLICY OFFICER, P.V.S.	To note native title clearance	
4	SENIOR POLICY OFFICER, CRAWLEY (for purchases)	To note	
5	DIRECTOR, NATURE CONSERVATION/ DIRECTOR, PARKS AND VISITOR SERVICES	To note	
6	C.I.S.	Please rename file/create new file	
	LAND & EXTERNAL FUNDING UNIT	Delete from District Proposals spreadsheet	



18
17
16
29°40'0"S
6 715 000mN
14
13
12
11
6 710 000mN
09
29°45'0"S

PART DEC COG PLAN:
1838-1, 1938-144
NOT TO SCALE.

N 46983
12681
Cons of Main Detraction. (501m)
18-8907 m.
V-Cons-Comm. of Wd

R 42477
R 42477
57

Beekeepers NR
C 24496

114°55'0"E 300 000mE 01 02 03 04 305 000mE 06 115°00'E 07 08 09 310 000mE 11 12 13

PART DECCOG PLAN
1938-11, 1938-2+3
NOT TO SCALE.

INDIAN OCEAN

COOLIMBA

R 42477

R 42477
64

R 42477
64

R 42477
64

R 42472
11959

M 46984
12680
Cons & Marl Extraction
14.69 ha.
Vested Cons. Comm of WA.

M 46982
12679
Cons & Marl Extraction
21.5452 ha.
V. Cons. Comm of WA.

R 46982
12679

R 24496

R 19219

