

RESERVE ACTION SHEET: CONSERVATION RESERVES

RESERVE No. 46920

LOCAL GOVERNMENT: Swan

NAME: Lexia Wetland

PURPOSE: Conservation of Flora and Fauna

VESTING: Conservation and Parks Commission

ACTION

Excision of 7.3591 hectares from Crown Reserve 46920.

Total Area: 20.5091 hectares to 13.1500 hectares

REASON FOR ACTION:

Main Roads requested the excision of 7.3591 hectares for Crown Reserve 46920 to facilitate the construction of Stage One of the Perth to Darwin National Highway. Stage One of the Perth to Darwin National Highway, known as NorthLink consists of a 37-kilometre road link between the intersection of Tonkin and Reid Highway and the town of Muchea, north of Perth.

The Minister for Environment provided his consent for the proposed excision on 24 February 2015 and requested the Minister for Lands to finalise the excision on 22 September 2015.

The excision was completed by the Department of Planning, Lands and Heritage on 19 October 2018.

Date of amendment: 19/10/2018

Maps: pp.180,134,137-136(double-sided)

Customer advice: p. 178

Proposal Summary: see pp. 95

Recommended IUCN classification: Ia

Native Title: Whadjuk People

1	LAND SERVICES UNIT LEADER	To note	SL 7/12/18
2	LAND UNIT	Send scan of RAS, customer advice, Reserve Enquiry Detail and maps to: <ul style="list-style-type: none"> • Lisa Wright (Kensington) DIGITAL COPY • District Manager DIGITAL COPY • Regional Manager DIGITAL COPY • Geoffrey Banks GIS Branch DIGITAL COPY Attach Landgate RED to file Strikethrough from District Proposals spreadsheets Create Conservation and Parks Commission summary	NM 7/12/18 NM 7/12/18 NM 7/12/18 NM 7/12/18 NM 7/12/18 NM 7/12/18
3	EXECUTIVE DIRECTOR, CONSERVATION AND ECOSYSTEM MANAGEMENT	To note	
4	C.I.S.	Please rename file/create new file Keyword: Activity: Subject: Free text:	

Customer Advices for Reserve Actions
1/11/2018 - 30/11/2018

City of Swan 1/11/2018 - 30/11/2018

Reserve No.	Land Description	DPLH File No.	Volume/Folio	Action	Document No.	Registered	Street Name	Area	Public Plans
46788	Lot 12752 on Plan 21246 Lot 12847 on Plan 21245 Lot 12848 on Plan 21245 Lot 12851 on Plan 21246	02527-1997	3109-552 3110-135 3110-136 3110-139	Reserve Cancellation "Future Highway"	0011909	19/10/2018	Tonkin Highway	40.2893 Ha	BG (10) 4.1 & 4.2
46788	Lot 12752 on Plan 21246 Lot 12847 on Plan 21245 Lot 12848 on Plan 21245 Lot 12851 on Plan 21246	02527-1997	3109-552 3110-135 3110-136 3110-139	?	0011908	19/10/2018	Tonkin Highway	40.2893 Ha	BG (10) 4.1 & 4.2
46919	Lot 12845 on Plan 21245	02515-1997	3110-109	Amendment of Reserve to include Lots 517 and 518 on Deposited Plan 405354 in lieu of Lot 12845 on Plan 21245 and its area being reduced to 126.2535 hectares, accordingly.	0011907	19/10/2018	NorthLink, Ellenbrook	126.2535 Ha	BG35 (10) 4.2
46920	Lot 12860 on Plan 21246	02519-1997	3089-640	Amendment of Reserve to now comprise Lots 513, 514 and 515 on Deposited Plan 405353 in lieu of Lot 12860 on Plan 21246 and its area being reduced to 13.1500 hectares, accordingly.	0011905	19/10/2018	NorthLink, Ellenbrook	13.15 Ha	BG35 (10) 4.2
49043	Lot 503 on Deposited Plan 407943	01774-1989	3166-756	Amendment of Reserve to add Lot 503 on Deposited Plan 407943 and its area being increased to 26.5167 hectares, accordingly.	0010626	18/10/2018	Ghangara Road, Lexia	26.5167 Ha	

Commented [BH22]: Was Main Roads

Commented [NM23]: Northlink excision

Commented [BH24]: Lexia Wetland NR, Nicola to check

Commented [NM25]: Northlink excision

Commented [BH26]: Ellenbrook NR, Nicola to check

Commented [BH27]: Water Corporation

Reserve Enquiry Detail [5100L]

Screen Friendly Pr

Reserve Name	46920	Legal Area (ha)	13.15
Type		Status	Current
Notes		Current Purpose	CONSERVATION OF FLORA AND FAUNA
File Number	02519-1997-01RO		
Additional Reserve Information	RESERVE COMPRISES LOTS 513,514 & 515 ON DP405353 (O011905)		

Class	Responsible Agency	Date of Last C
A	DEPARTMENT OF BIODIVERSITY, CONSERVATION AND ATTRACTIONS (SCLM)	06/11/2018

Management Orders	Document	Land Use	Local Government Authc
CONSERVATION COMMISSION OF WESTERN AUSTRALIA	L237072	CONSERVATION OF FLORA AND FAUNA	SWAN, CITY OF

Add Item	CLT Number	Parcel Identifier	Street Address	Suburb	File Number	PIN	Area (sqm)	Map
<input type="checkbox"/>	LR3169-916	Lot 513 On Plan 405353			02519-1997	12201407	14700.0	
<input type="checkbox"/>	LR3169-917	Lot 514 On Plan 405353			02519-1997	12201409	1137.0	
<input type="checkbox"/>	LR3169-918	Lot 515 On Plan 405353			02519-1997	12201410	115663.0	

Reserve Number 46920

Previous Certificates of Title

Historic Crown Allotments

SWAN Location 12860

Gaz Page/Document	Date	Type	Text
O11905	19/10/2018	Current Area	13.1500
L237072	19/02/2010	Current Vesting	VESTING CONSERVATION COMMISSION OF WESTERN AUSTRALIA
L235950	18/02/2010	Historical Responsible Agency	DEPARTMENT FOR PLANNING AND INFRASTRUCTURE
	10/10/2002	Class	A
I255346	04/10/2002	Current Purpose	CONSERVATION OF FLORA AND FAUNA
I255346	04/10/2002	Historical Area	20.5247
I255346	04/10/2002	Location	SWAN LOCATION 12860
I255346	04/10/2002	Public Plan	BG35 (10) 04:02
I255346	04/10/2002	Street Name	MARALLA ROAD, ELLENBROOK
I255346	04/10/2002	Survey Number	OFFICE OF TITLES PLAN 21246
	04/10/2002	Correspondence File Number	02519-1997-01RO

This product is for information purposes only. A search of the original documentation is required for all legal purposes
Western Australian Land Information Authority (Landgate)

Close Window



MAP VIEWER



Window Show/Hide

Cadastral Parcels

Catalogue (tick box to select) help

- Property View
- Aerial Photography
- Street Maps

Service Details - Property View help

Transparency

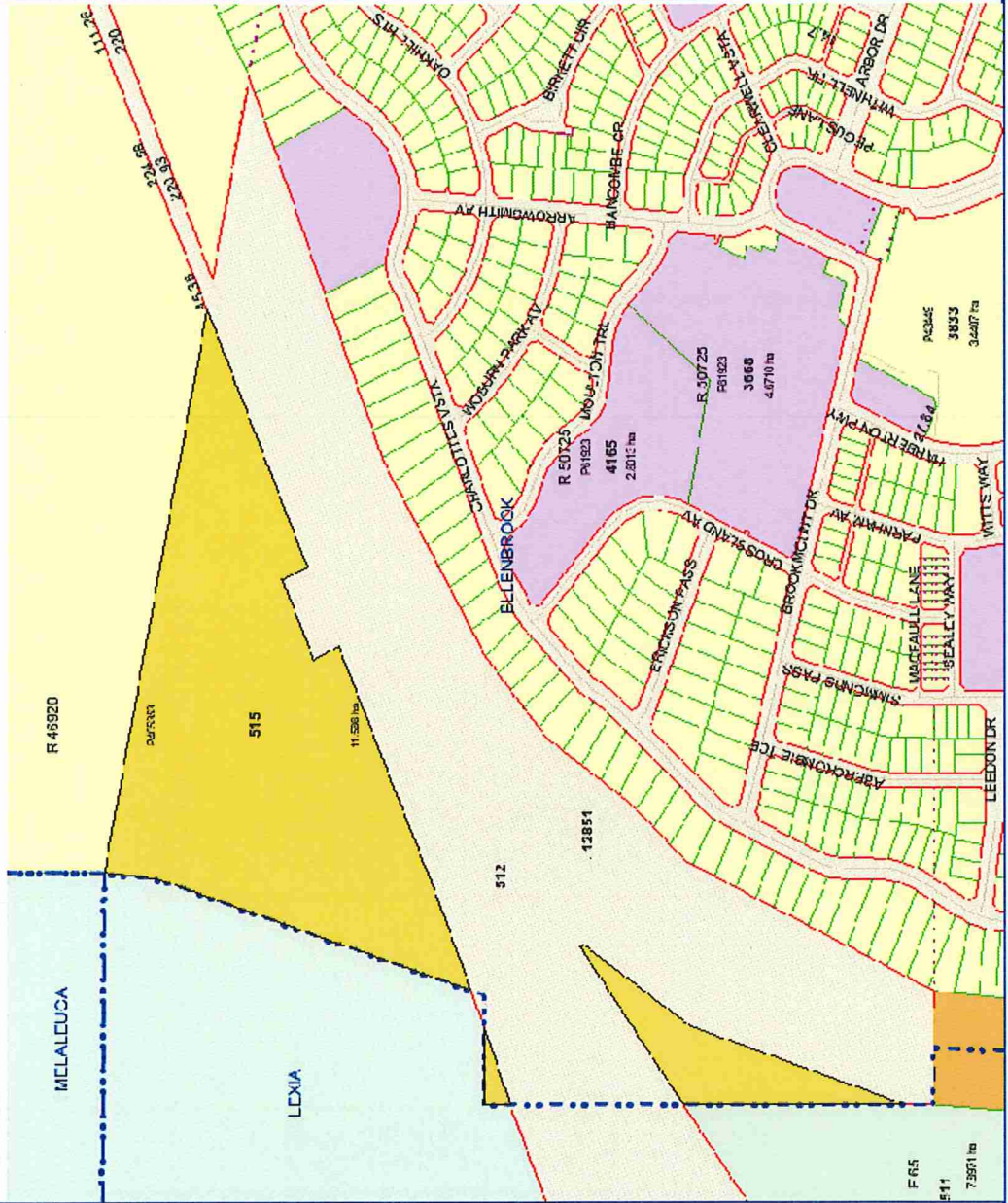
Layers Legend Search

Crown Reserve

Number

Search Type

Map help



3 records selected

Scale 1: 6,082 Latitude: -31.766422 Longitude

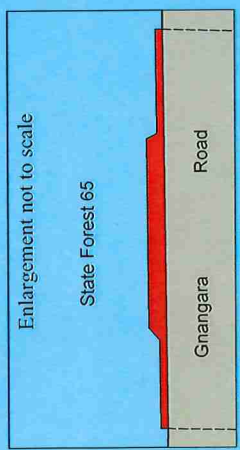
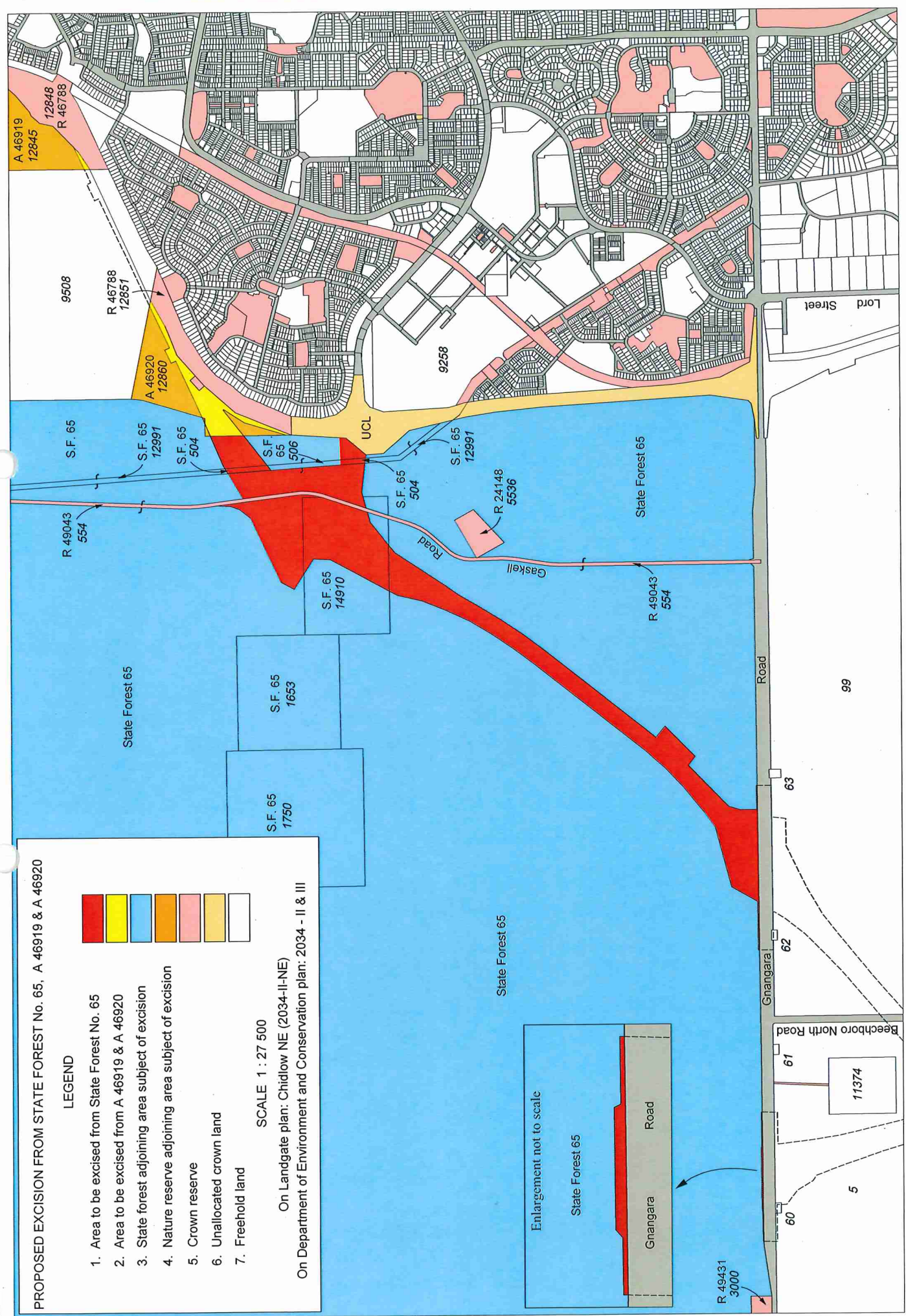
PROPOSED EXCISION FROM STATE FOREST No. 65, A 46919 & A 46920

LEGEND

[Red Box]	1. Area to be excised from State Forest No. 65
[Yellow Box]	2. Area to be excised from A 46919 & A 46920
[Light Blue Box]	3. State forest adjoining area subject of excision
[Orange Box]	4. Nature reserve adjoining area subject of excision
[Pink Box]	5. Crown reserve
[Light Yellow Box]	6. Unallocated crown land
[White Box]	7. Freehold land

SCALE 1 : 27 500

On Landgate plan: Chidlow NE (2034-II-NE)
On Department of Environment and Conservation plan: 2034 - II & III



VER.	AMENDMENT 2 AMEND EASEMENT 'B' BURDEN & ADD EASEMENT 'C' AUDIT REQUIREMENTS	AUTHORISED BY N. BARTLETT N. BARTLETT	DATE 2/10/15 5/10/15	INTERESTS AND NOTIFICATIONS																																										
				<table border="1" style="width:100%; border-collapse: collapse;"> <tr> <th style="width:10%;">SUBJECT</th> <th style="width:15%;">PURPOSE</th> <th style="width:15%;">STATUTORY REFERENCE</th> <th style="width:15%;">ORIGIN</th> <th style="width:15%;">LAND BURDENED</th> <th style="width:15%;">BENEFIT TO</th> <th style="width:15%;">COMMENTS</th> </tr> <tr> <td>①</td> <td>DBNGP CORRIDOR</td> <td>STATE PIPELINE ACT 1989</td> <td>R606104</td> <td>LOTS 504 - 507</td> <td>DBNGP LAND ACCESS THINSTER</td> <td>SEE DP 215564</td> </tr> <tr> <td>②</td> <td>STATE CORRIDOR RIGHTS</td> <td>DAMPER P O BURGURY PIPELINE ACT 1991</td> <td>K102321 (TAKING ORDER)</td> <td>LOTS 504 - 507</td> <td>DBNGP LAND ACCESS THINSTER</td> <td>SEE DP 215564</td> </tr> <tr> <td>③</td> <td>EASEMENT</td> <td>PETROLEUM PIPELINES ACT 1969</td> <td>DOC E450634</td> <td>LOT 511</td> <td>APT PARMELIA PTY LTD</td> <td></td> </tr> <tr> <td>④</td> <td>NON-EXTINGUISHMENT OF NATIVE TITLE</td> <td>SECTIONS 242A & 238 OF THE NATIVE TITLE ACT 1993</td> <td>DOC</td> <td>LOTS 501 & 502</td> <td>APT PARMELIA PTY LTD</td> <td></td> </tr> <tr> <td>⑤</td> <td>NOTIFICATION</td> <td>PETROLEUM PIPELINES ACT 1969</td> <td>DOC</td> <td>LOT 501</td> <td>APT PARMELIA PTY LTD</td> <td></td> </tr> </table>	SUBJECT	PURPOSE	STATUTORY REFERENCE	ORIGIN	LAND BURDENED	BENEFIT TO	COMMENTS	①	DBNGP CORRIDOR	STATE PIPELINE ACT 1989	R606104	LOTS 504 - 507	DBNGP LAND ACCESS THINSTER	SEE DP 215564	②	STATE CORRIDOR RIGHTS	DAMPER P O BURGURY PIPELINE ACT 1991	K102321 (TAKING ORDER)	LOTS 504 - 507	DBNGP LAND ACCESS THINSTER	SEE DP 215564	③	EASEMENT	PETROLEUM PIPELINES ACT 1969	DOC E450634	LOT 511	APT PARMELIA PTY LTD		④	NON-EXTINGUISHMENT OF NATIVE TITLE	SECTIONS 242A & 238 OF THE NATIVE TITLE ACT 1993	DOC	LOTS 501 & 502	APT PARMELIA PTY LTD		⑤	NOTIFICATION	PETROLEUM PIPELINES ACT 1969	DOC	LOT 501	APT PARMELIA PTY LTD	
SUBJECT	PURPOSE	STATUTORY REFERENCE	ORIGIN	LAND BURDENED	BENEFIT TO	COMMENTS																																								
①	DBNGP CORRIDOR	STATE PIPELINE ACT 1989	R606104	LOTS 504 - 507	DBNGP LAND ACCESS THINSTER	SEE DP 215564																																								
②	STATE CORRIDOR RIGHTS	DAMPER P O BURGURY PIPELINE ACT 1991	K102321 (TAKING ORDER)	LOTS 504 - 507	DBNGP LAND ACCESS THINSTER	SEE DP 215564																																								
③	EASEMENT	PETROLEUM PIPELINES ACT 1969	DOC E450634	LOT 511	APT PARMELIA PTY LTD																																									
④	NON-EXTINGUISHMENT OF NATIVE TITLE	SECTIONS 242A & 238 OF THE NATIVE TITLE ACT 1993	DOC	LOTS 501 & 502	APT PARMELIA PTY LTD																																									
⑤	NOTIFICATION	PETROLEUM PIPELINES ACT 1969	DOC	LOT 501	APT PARMELIA PTY LTD																																									
				FORMER TENURE TABLE																																										
		LOT	FORMER TENURE	ON PLAIN/DA	TITLE																																									
		501, 503 & 511	S.F. 65	DP 212619																																										
		502, 508-510	LOT 14910	DP 36330	LR3167-732																																									
		504-507	LOT 12991	DP 215564	LR3139-386																																									

TYPE CROWN S.S.A. NO

PURPOSE SUBDIVISION

PLAN OF LOTS 503 - 511 AND ROAD (LOTS 501 & 502)

FORMER TENURE SEE FORMER TENURE TABLE

LOCAL AUTHORITY CITY OF SWAN

LOCALITY LEXIA, MELALEUCA

D.O.L. FILE 00217-2015

FIELD RECORD 127281, 127282

SURVEYORS CERTIFICATE - REG 54

I, NEIL BARTLETT hereby certify that this plan is accurate and is a correct representation of the -
 (a) *survey; and/or
 (b) *calculations from measurements recorded in the field records,
 [* delete if inapplicable]
 undertaken for the purposes of this plan and that it complies with the relevant written law(s) in relation to which it is lodged.
N. Bartlett
 LICENSED SURVEYOR 71082015 DATE

LOGGED

14-Apr-2015 \$100 1905769
 DATE FEE PAID ASSES. No.

I.S.C.

EXAMINED
Barbara Francis
 Barbara Francis 5-Oct-2015 DATE
WESTERN AUSTRALIAN PLANNING COMMISSION


FILE EXEMPT FROM WAPC APPROVAL

Delegated under S.16 P&D Act 2005 DATE

SUBJECT TO IN ORDER FOR DEALINGS
 - Application to State Forest (S.F. 65)
 - Application to Surrender Portion of Easement Created in Doc E 450634,
 - Dedication Action
 - Petroleum Pipelines Act 1969 - Notification
Barbara Francis
 FOR INSPECTOR OF PLANS AND SURVEYS 5-Oct-2015 DATE

APPROVED

INSPECTOR OF PLANS AND SURVEYS DATE
 (S.18 Licensed Surveyors Act 1969)



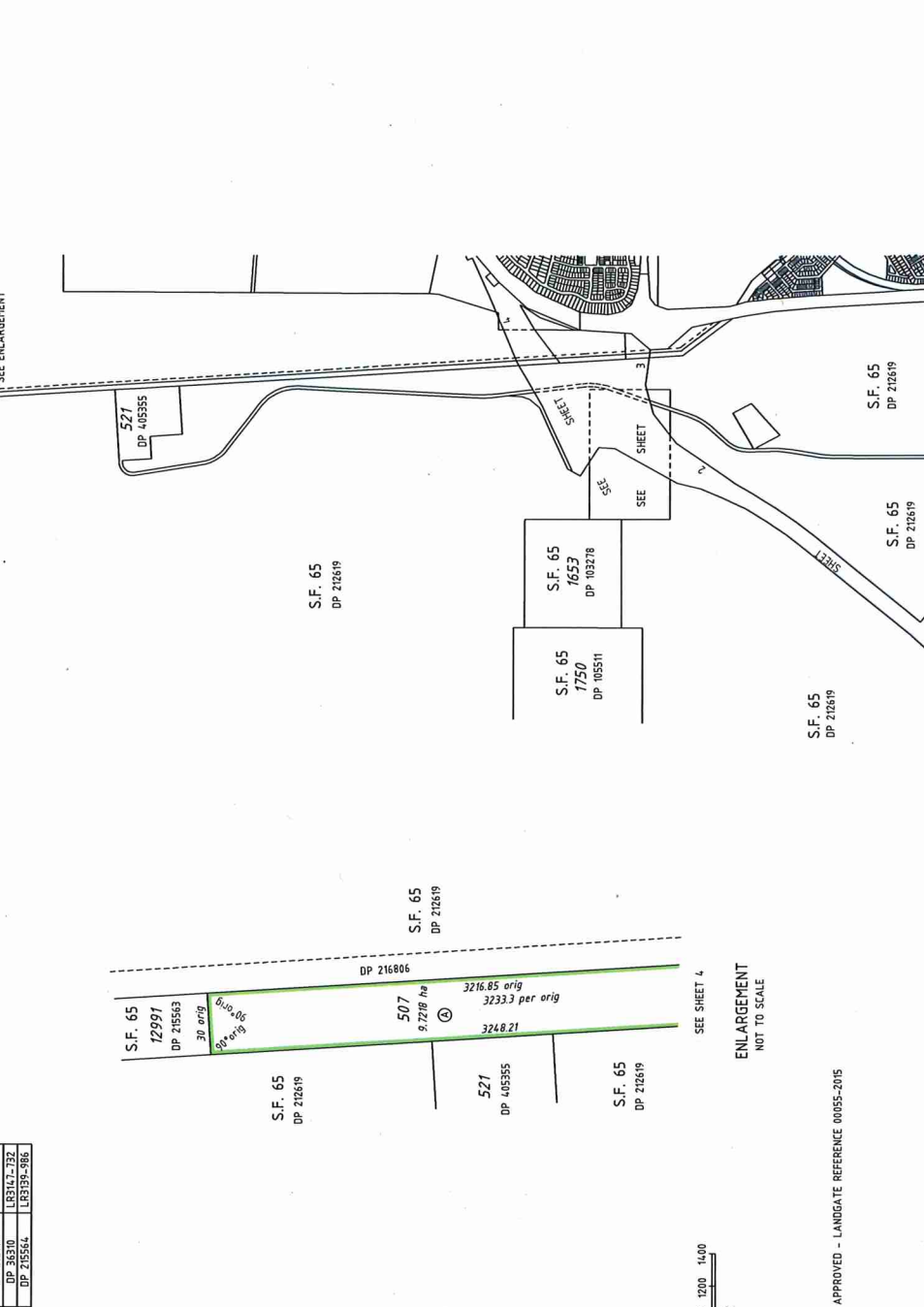
DEPOSITED PLAN
405352
 SHEET 1 OF 4 SHEETS
 VERSION 3

VER. 2

AMENDMENT 2 AMEND EASEMENT 'B' BURDEN & ADD EASEMENT 'C' AUDIT REQUIREMENTS

DATE 2/10/15

AUTHORISED BY N. BARTLETT



The diagram shows a plan of Lots 501, 502, 503, 504, 505, 506, 507, 508, 509, 510, and 511. Lot 507 is highlighted in green. It shows easements for DBNGP corridors, State Corridor Rights, and Petroleum Pipelines. It also shows former tenure areas (S.F. 65) and native title areas. A scale bar and north arrow are included.

LOGGEMENT WITHOUT ROAD NAMES APPROVED - LANDGATE REFERENCE 00055-2015

SCALE 1:20,000 @ A2

0 200 400 600 800 1000 1200 1400

ENLARGEMENT NOT TO SCALE

SEE SHEET 2

SEE SHEET 3

SEE SHEET 4

SEE SHEET 5

SEE SHEET 6

SEE SHEET 7

SEE SHEET 8

SEE SHEET 9

SEE SHEET 10

SEE SHEET 11

SEE SHEET 12

SEE SHEET 13

SEE SHEET 14

SEE SHEET 15

SEE SHEET 16

SEE SHEET 17

SEE SHEET 18

SEE SHEET 19

SEE SHEET 20

SEE SHEET 21

SEE SHEET 22

SEE SHEET 23

SEE SHEET 24

SEE SHEET 25

SEE SHEET 26

SEE SHEET 27

SEE SHEET 28

SEE SHEET 29

SEE SHEET 30

SEE SHEET 31

SEE SHEET 32

SEE SHEET 33

SEE SHEET 34

SEE SHEET 35

SEE SHEET 36

SEE SHEET 37

SEE SHEET 38

SEE SHEET 39

SEE SHEET 40

SEE SHEET 41

SEE SHEET 42

SEE SHEET 43

SEE SHEET 44

SEE SHEET 45

SEE SHEET 46

SEE SHEET 47

SEE SHEET 48

SEE SHEET 49

SEE SHEET 50

SEE SHEET 51

SEE SHEET 52

SEE SHEET 53

SEE SHEET 54

SEE SHEET 55

SEE SHEET 56

SEE SHEET 57

SEE SHEET 58

SEE SHEET 59

SEE SHEET 60

SEE SHEET 61

SEE SHEET 62

SEE SHEET 63

SEE SHEET 64

SEE SHEET 65

SEE SHEET 66

SEE SHEET 67

SEE SHEET 68

SEE SHEET 69

SEE SHEET 70

SEE SHEET 71

SEE SHEET 72

SEE SHEET 73

SEE SHEET 74

SEE SHEET 75

SEE SHEET 76

SEE SHEET 77

SEE SHEET 78

SEE SHEET 79

SEE SHEET 80

SEE SHEET 81

SEE SHEET 82

SEE SHEET 83

SEE SHEET 84

SEE SHEET 85

SEE SHEET 86

SEE SHEET 87

SEE SHEET 88

SEE SHEET 89

SEE SHEET 90

SEE SHEET 91

SEE SHEET 92

SEE SHEET 93

SEE SHEET 94

SEE SHEET 95

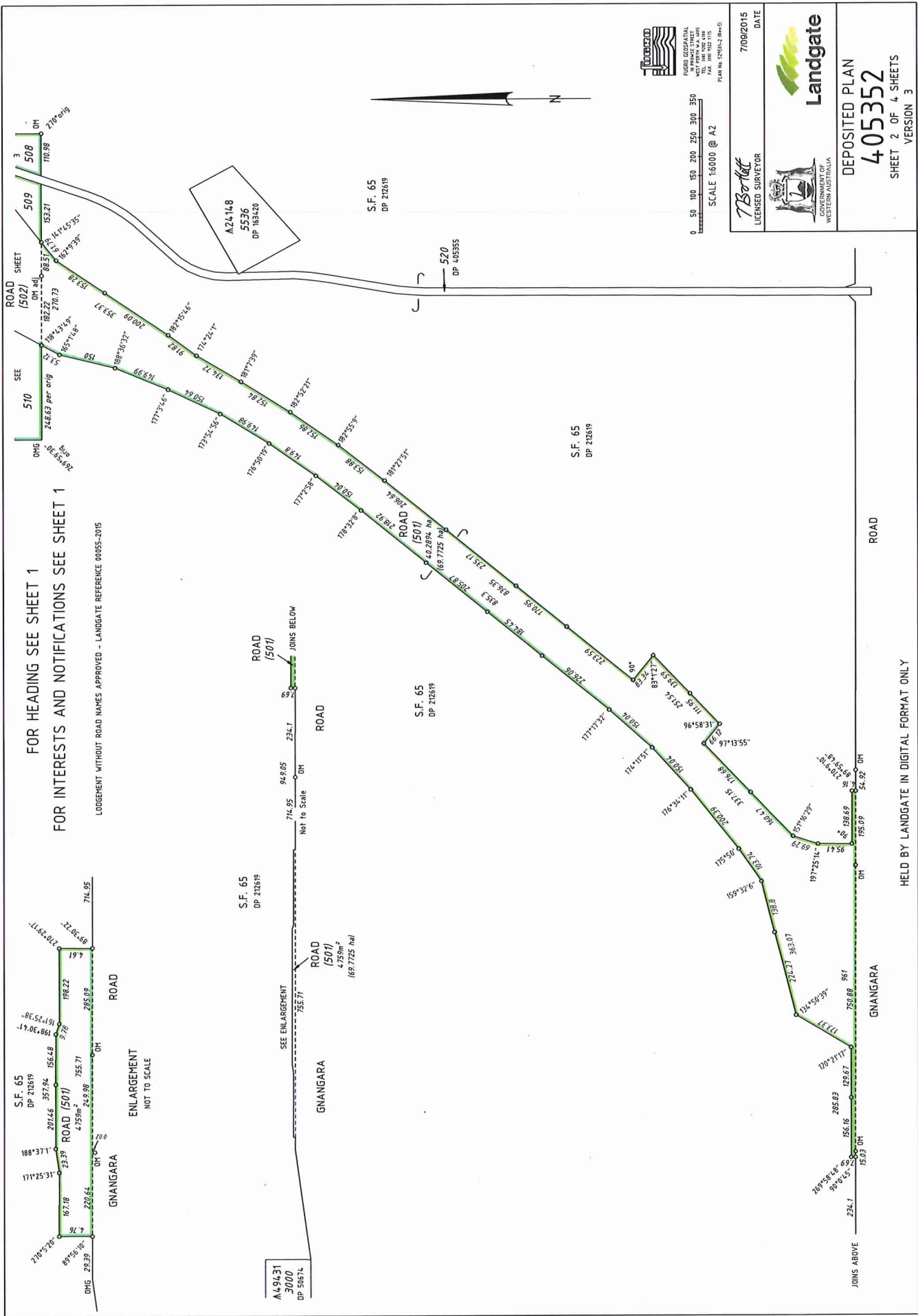
SEE SHEET 96

SEE SHEET 97

SEE SHEET 98

SEE SHEET 99

SEE SHEET 100



FOR HEADING SEE SHEET 1
FOR INTERESTS AND NOTIFICATIONS SEE SHEET 1

LODGE WITHOUT ROAD NAMES APPROVED - LANDGATE REFERENCE 00055-2015

ENLARGEMENT
NOT TO SCALE

A.49431
3000
DP 58674

S.F. 65
DP 212619

SEE ENLARGEMENT

ROAD (501)
4.759m²
(69.7725 ha)

S.F. 65
DP 212619

S.F. 65
DP 212619

S.F. 65
DP 212619

520
DP 405355



DEPARTMENT OF PLANNING, LANDS AND HERITAGE
WESTERN AUSTRALIA
100 PARLIAMENT STREET
PERTH WA 6000
TEL: 9111 1111
FAX: 9111 1115

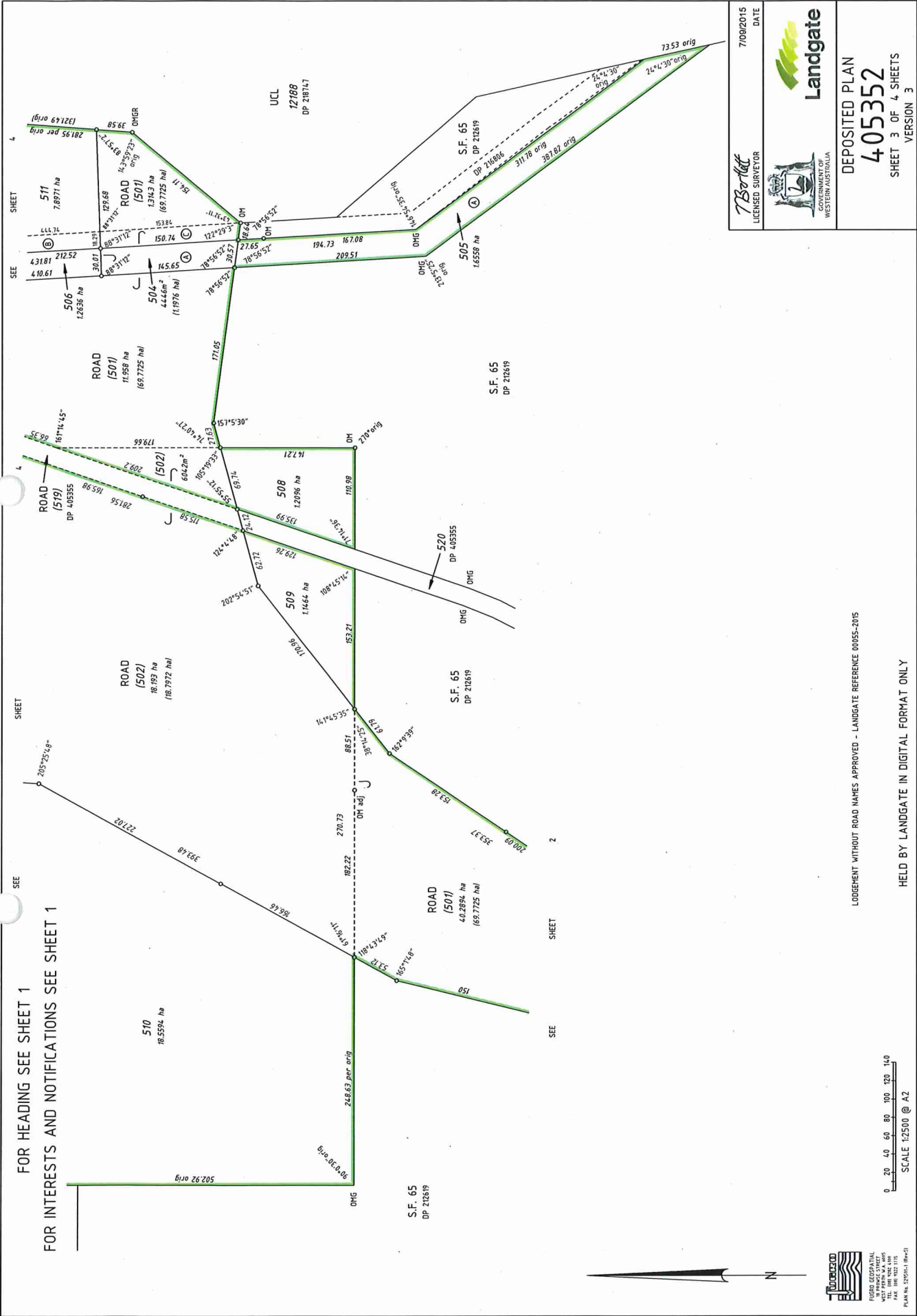
SCALE 1:6000 @ A2
0 50 100 150 200 250 300 350

7/09/2015
DATE



DEPOSITED PLAN
405352
SHEET 2 OF 4 SHEETS
VERSION 3

HELD BY LANDGATE IN DIGITAL FORMAT ONLY



7/09/2015
DATE

7/09/2015
LICENSED SURVEYOR

Landgate
GOVERNMENT OF
WESTERN AUSTRALIA

DEPOSITED PLAN
405352
SHEET 3 OF 4 SHEETS
VERSION 3

FOR HEADING SEE SHEET 1
FOR INTERESTS AND NOTIFICATIONS SEE SHEET 1

LOGEMENT WITHOUT ROAD NAMES APPROVED - LANDGATE REFERENCE 00055-2015

HELD BY LANDGATE IN DIGITAL FORMAT ONLY



FIGURE GEOSPATIAL
INFORMATION SYSTEMS
WESTERN AUSTRALIA
MAY 1996
PLAN NO. 21970/1 (Rev 2)

FOR HEADING SEE SHEET 1
FOR INTERESTS AND NOTIFICATIONS SEE SHEET 1

LODGE/MENT WITHOUT ROAD NAMES APPROVED - LANDGATE REFERENCE 00055-2015

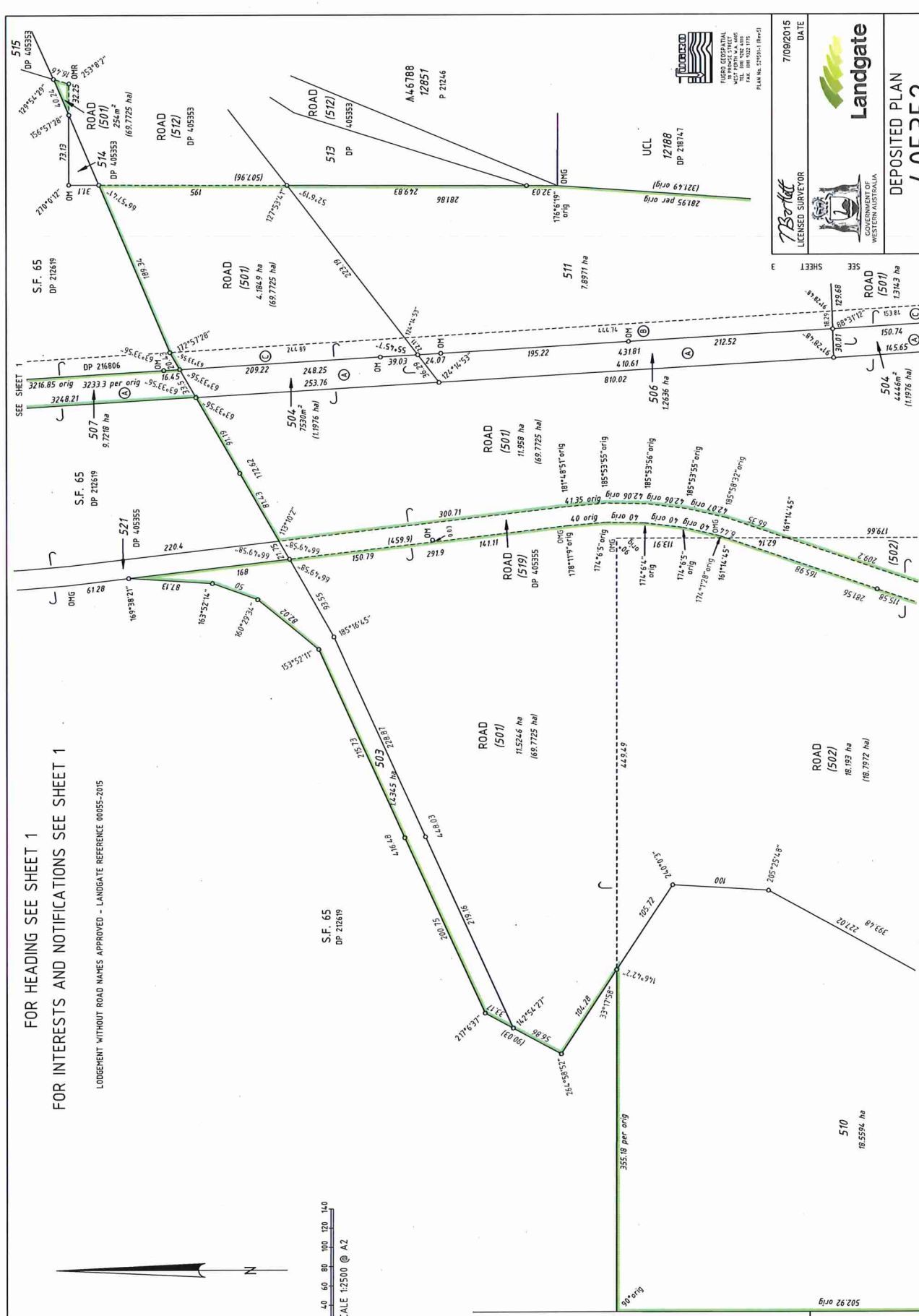


SCALE 1:2500 @ A2



S.F. 65
1653
DP 103278

S.F. 65
DP 212619



7/09/2015
DATE



DEPOSITED PLAN
405352
SHEET 4 OF 4 SHEETS
VERSION 3

SEE SHEET 3
ROAD (501)
1316.3 ha
1292.68

504
444.6m²
(117916 ha)
150.74
145.65

SEE SHEET 3
ROAD (501)
1316.3 ha
1292.68

506
12636 ha
4.10.61
810.02

ROAD (501)
11598 ha
11976 ha
687725 ha

ROAD (501)
11524.6 ha
11976 ha
687725 ha

ROAD (501)
18193 ha
187972 ha

510
185594 ha

SEE SHEET 3
SEE SHEET 3
SEE SHEET 3
SEE SHEET 3
SEE SHEET 3
SEE SHEET 3
SEE SHEET 3
SEE SHEET 3