

# RESERVE ACTION SHEET: CONSERVATION RESERVES

**RESERVE No.** 19212

**LOCAL GOVERNMENT:** Shire of Coolgardie

**NAME :** Yallari Timber Reserve

**PURPOSE:** Conservation Park

**VESTING:** Conservation Commission

**ACTION**

In 2005 Main Road Western Australia began dedication of the Coolgardie Esperance Highway. The highway had previously been constructed but was not within a dedicated road reserve. For the road to be dedicated the Department of Environment and Conservation (DEC) was requested to excise 27.03ha of Reserve 19212 which contains the Coolgardie Esperance Highway. On 12 September 2007 the excision was finalised and as a result the reserve was amended to comprise of Lot 309 and 355 on Deposited Plan 45787.

**Total Area:** 6102.00 to 6074.97ha

**REASON FOR ACTION**

The excision of 27.03ha from Yallari Timber Reserve was required for dedication of the Coolgardie Esperance Highway.

**Date of amendment:** 12/9/2007

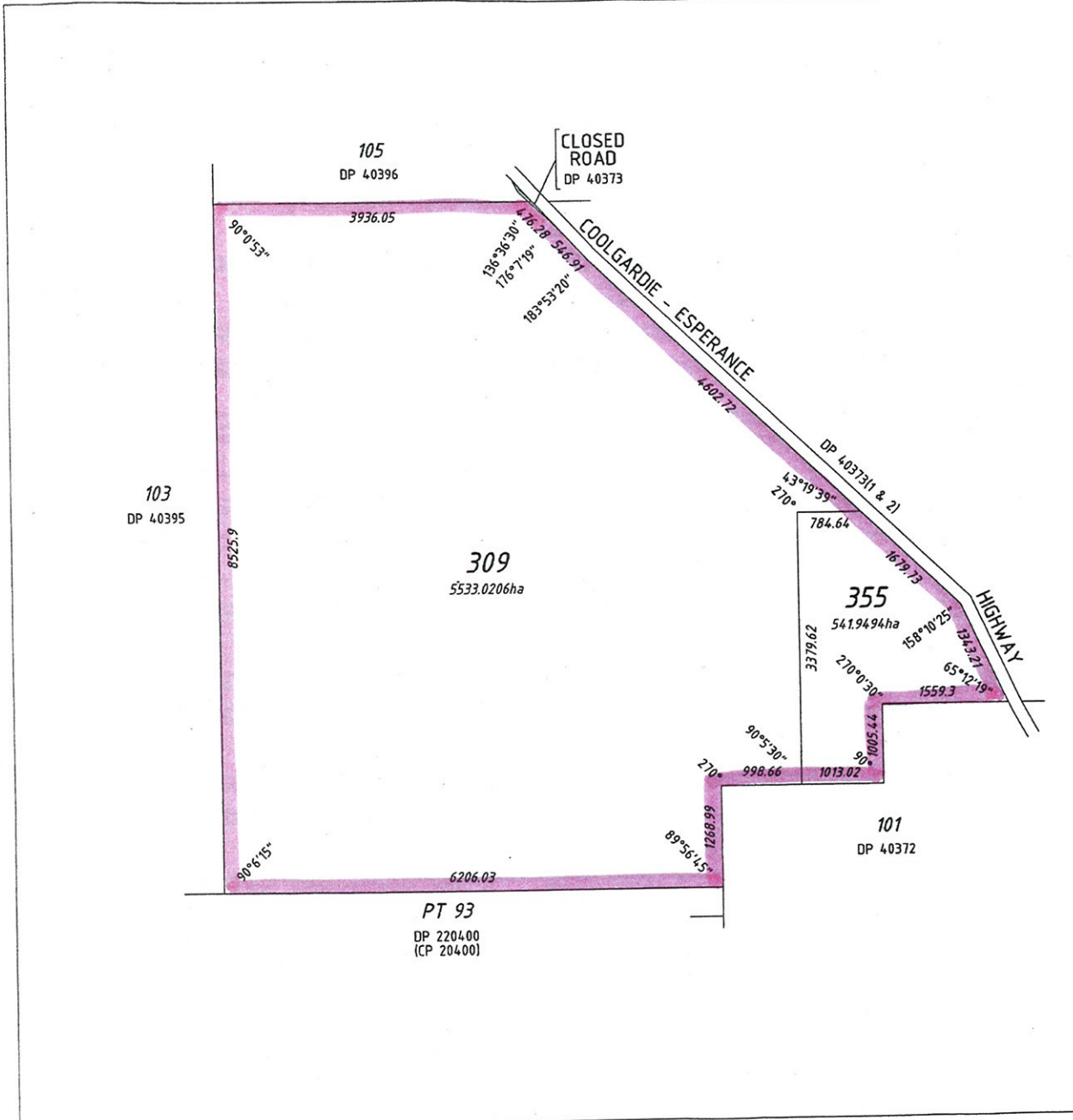
**Maps:** 12

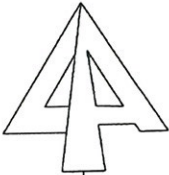

**Customer advice:** 11

**Proposal Summary:** 6

**IUCN classification:** 1a

1	<b>LAND UNIT LEADER</b>	To note	<i>DL</i>
2	<b>LAND UNIT</b>	Send copies of advice and maps to:	
		• Lisa Wright (Woodvale)	✓
		• District Manager	✓
		• Regional Manager	✓
	Attach TENIS gazettal history to file	✓ NA	
	Delete from District Proposals spreadsheets	✓ NA	
	Create Conservation Commission summary		
3	<b>DIRECTOR, NATURE CONSERVATION</b>	To note	
4	<b>C.I.S.</b>	Please rename file/create new file  Keyword: Activity: Subject: Free text:	



TYPE	CROWN	
PURPOSE	CONVERSION	
PLAN OF	LOTS 309 & 355	
COMPILED FROM	DP 40372 DP 40373(1 & 2) DP 40395 DP 40396 DP 203733 (CP 3733)	
DISTRICT	NGALBAIN	FILE
TOWNSITE		
LOCAL AUTHORITY	SHIRE OF COOLGARDIE	
LOCALITY	LONDONDERRY	
FORMER TENURE	RECORDED	
LOT 309 - PART LOT 9 ON DP 203733 CLT 3099/404	ON	RUSSELL BRANDIS 18.7.2005 PREPARED BY DATE
LOT 355 - PART LOT 55 ON DP 240122 CLT 3099/404	INDEX	
	BOORABBIN (250)	
	PUBLIC	
CSD REFERENCE		P.M.K. 27.7.2005 CHECKED BY DATE
GART-CSD\DP45787.CSD		
SCALE @A3: ALL DISTANCES ARE IN METRES	1:50000	0 500 1000 1500 2000 2500
THIS PLAN CREATED FOR CERTIFICATE OF TITLE LAND DESCRIPTION PURPOSES		
THIS PLAN PROVIDES A GRAPHIC REPRESENTATION OF THE EXISTING LOT(S) AND ALLOCATES A WHOLE LOT(S) AND DESCRIPTION FOR THE CONVERSION OF PAPER CERTIFICATES OF TITLE TO THE DIGITAL REGISTER.		
	 Department of Land Information	
	DEPOSITED PLAN  <h1 style="margin: 0;">45787</h1>	
	SHEET 1 OF 1	EDITION 1 VERSION 1

DP 45787



HELD BY DLI  
IN DIGITAL  
FORM ONLY

**Customer Advices for Reserve Actions  
1/09/2007 - 30/09/2007**

**Shire of Coolgardie 1/09/2007 - 30/09/2007**

Reserve No.	Land Description	DPI File No.	Volume/Folio	Action	Document No.	Registered	Street Name	Area	Public Plans
10138	Unnumbered Ngalbain Location	03237-1989-01RO	0000-000	Amendment of Reserve to To now comprise Lot 310 on Deposited Plan 48598 and its area now being 236.1841 hectares	K340710	12/09/2007	COOLGARDIE-ESPERANC E RD	236.1841 Ha	BOORABBIN 1:250000
10305	Unnumbered Ngalbain Location	04011-1906-01RO	0000-000	Amendment of Reserve to To now comprise Lot 300 on Deposited plan 48601 and its area now being 10987 hectares	K340716	12/09/2007	COOLGARDIE-ESPERANC E HIGHWAY	10987 Ha	WIDGIEMOOLTHA 1:250000
11055	Lot 5 on Deposited Plan 120081	08883-1907-01RO	0000-000	Reserve Cancellation "PUBLIC UTILITY"	K340700	12/09/2007	HIGGINS STREET	0 sqm	
11056	Lots 12 & 13 on Deposited Plan 120081	08882-1907-01RO	0000-000	Reserve Cancellation "GOVERNMENT REQUIREMENTS"	K340702	12/09/2007	HIGGINS STREET	0 sqm	HIGGINSVILLE TOWNSITE
11057	Lots 30, 39 & 40 on Deposited Plan 222569 Lots 49, 50, 60, 61, 95, 96, 100 and 108 on Deposited Plan 222570	07521-1906-01RO	0000-000 0000-000	Amendment of Reserve to To exclude Lots 39, 40, 49, 50, 60 & 61 and its area being reduced by 0.6072 hectares accordingly	K340719	12/09/2007	ERIN & HIGGINS STREETS	0.5103 Ha	HIGGINSVILLE T/SITE
14636	Lot 59 on Deposited Plan 222570	10274-1912-01RO	0000-000	Reserve Cancellation "SALVATION ARMY"	K340703	12/09/2007	HIGGINS STREET	0 sqm	HIGGINSVILLE TOWNSITE
19212	Lot 9 on Deposited Plan 240122 Lot 55 on Deposited Plan 240122	01173-1989-01RO	3099-404 3099-404	Amendment of Reserve to To now comprise Lots 309 and 355 on Deposited Plan 45787 and its area now being 6074.97	K340705	12/09/2007	COOLGARDIE-ESPERANC E HIGHWAY	6074.97 Ha	BOORABBIN 1:250000
21648	Lot 114 on Deposited Plan 92313	02451-1936-01RO	0000-000	Amendment of Reserve to To now comprise Lot 301 on Deposited Plan 45777 and its area now being 1.9561 hectares	K340712	12/09/2007	COOLGARDEI-ESPERANC E RD	1.9561 Ha	BOORABBIN 1:250000
21739	Lot 7 on Deposited Plan 120081	01001-1937-01RO	0000-000	Reserve Cancellation "HALL SITE"	K340701	12/09/2007	HIGGINS STREET	0 sqm	HIGGINSVILLE T/SITE
22189	Unnumbered Ngalbain Location	00926-1940-01RO	0000-000	Amendment of Reserve to To now comprise Lot 226 on Deposited Plan 40371 and its area now being 4.2231 hectares	K340707	12/09/2007	COOLGARDIE-ESPERANC E RD	4.0153 Ha	COOLGARDIE 02 09.11,09.12,REGIONAL 10
31370	Lot 22 on Deposited Plan 174172	00784-1968-01RO	3081-339	Reserve Cancellation "WATER SUPPLY"	K340699	12/09/2007	COOLGARDIE-ESPERANC E RD	0 sqm	BOORABBIN 1:250000
3142	Lot 56 on Deposited Plan 183173	03521-1995-01RO	3060-166	Amendment of Reserve to To now comprise Lots 223, 224 and 225 on Deposited Plan 40371 and its area now being 31.3972 hectares	K340704	12/09/2007	COOLGARDIE-ESPERANC E HIGHWAY	31.3972 Ha	CF37(10) 02.03
3210	Lot 33 on Deposited Plan 211701	05583-1910-01RO	3081-344	Amendment of Reserve to To now comprise Lot 333 on Deposited Plan 45789 and its area now being 100.5357 hectares	K340709	12/09/2007	COOLGARDIE-ESPERANC E HIGHWAY	100.5357 Ha	WIDGIEMOOLTHA 1:250000
33752	Lot 451 on Deposited Plans 212229 & 212230, Lot 36 on Deposited Plan 175128, Lot 40 on Deposited Plans 212230, 212232, 212233 & 212234 and Lot 41 on Deposited Plans 21229 and 212231	00811-1970-01RO	3092-612	Amendment of Reserve to To now comprise Lot 3010 on Deposited Plan 45778, Lot 3011 on Deposited Plan 45779, Lot 3012 on Deposited Plan 45780 and Lot 36 on Deposited Plan 175128 and its area now being 61.4856 hectares	K340713	12/09/2007	NEAR KAMBALDA RD	61.4856 Ha	KAMBALDA (02)

2005F002354  
Customer Advices - Created 02/10/2007

JEN - PLEASE PREPARE PLANS, SO.  
26/10/07