



5/4 PGW 8404

3



5/8

RAS 692

3



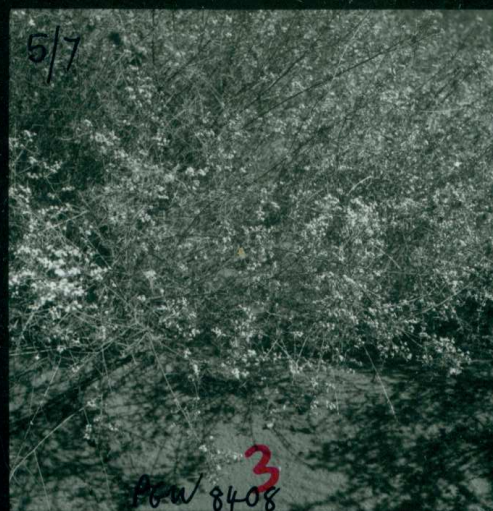
5/12 PGW 8419

3



5/3 PGW 8392

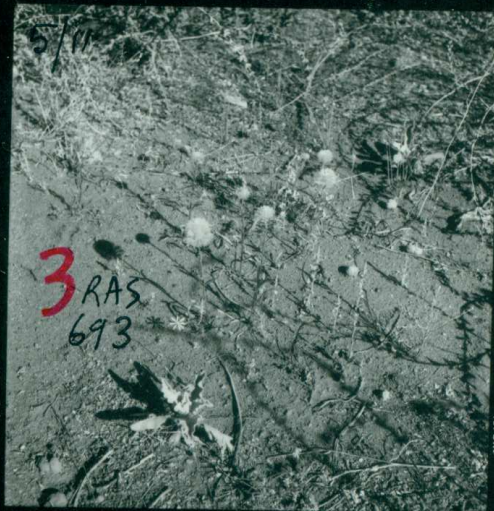
3



5/7

PGW 8408

3



5/11

3 RAS 693



5/2 PGW 8392

3



5/6

1



5/10 PGW 8415

3



5/1 RAS 686

all are *whiteleneg*

3



Gascoyne R
5/5 at
Doorawarrah
1 Sta

1



5/9 RAS 690

3