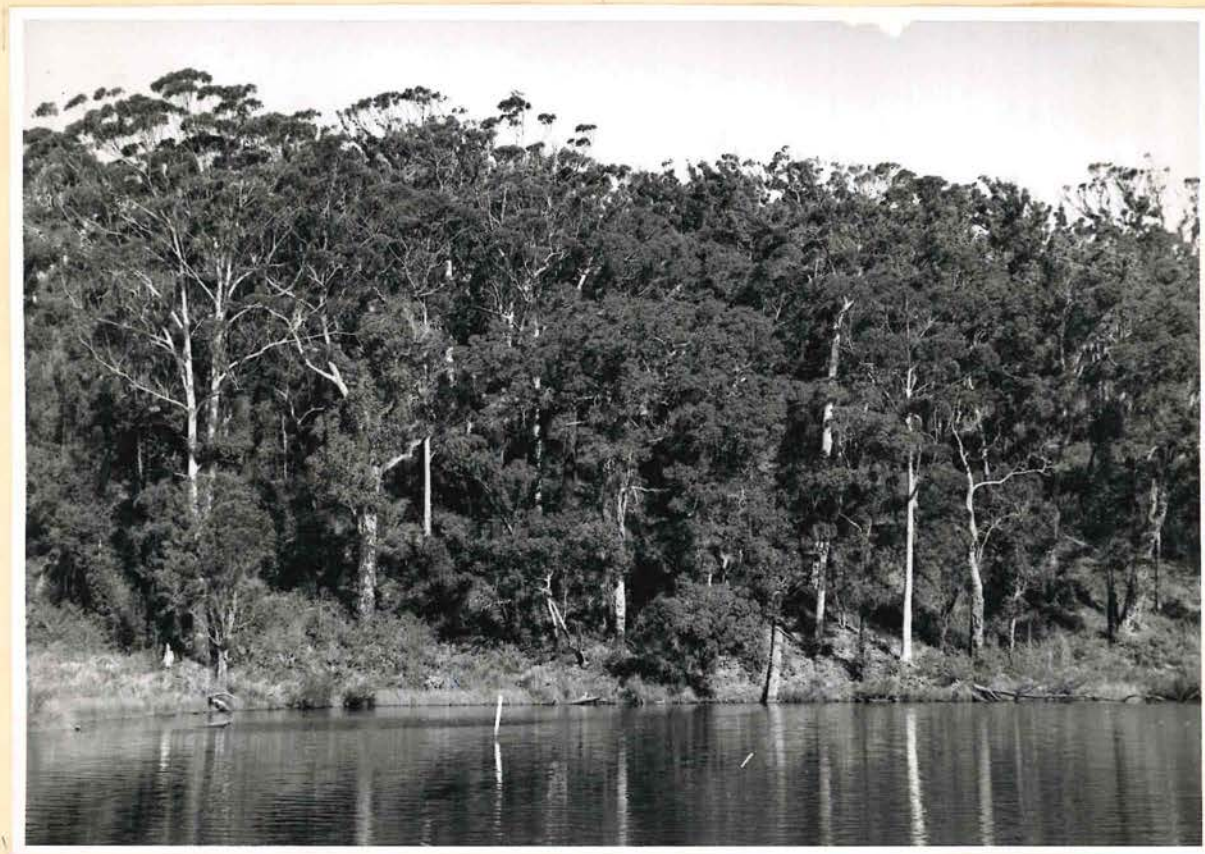


NORNALUP NATIONAL PARK



1. Frankland River, Nornalup.

Photo. W.A.Govt. Printer



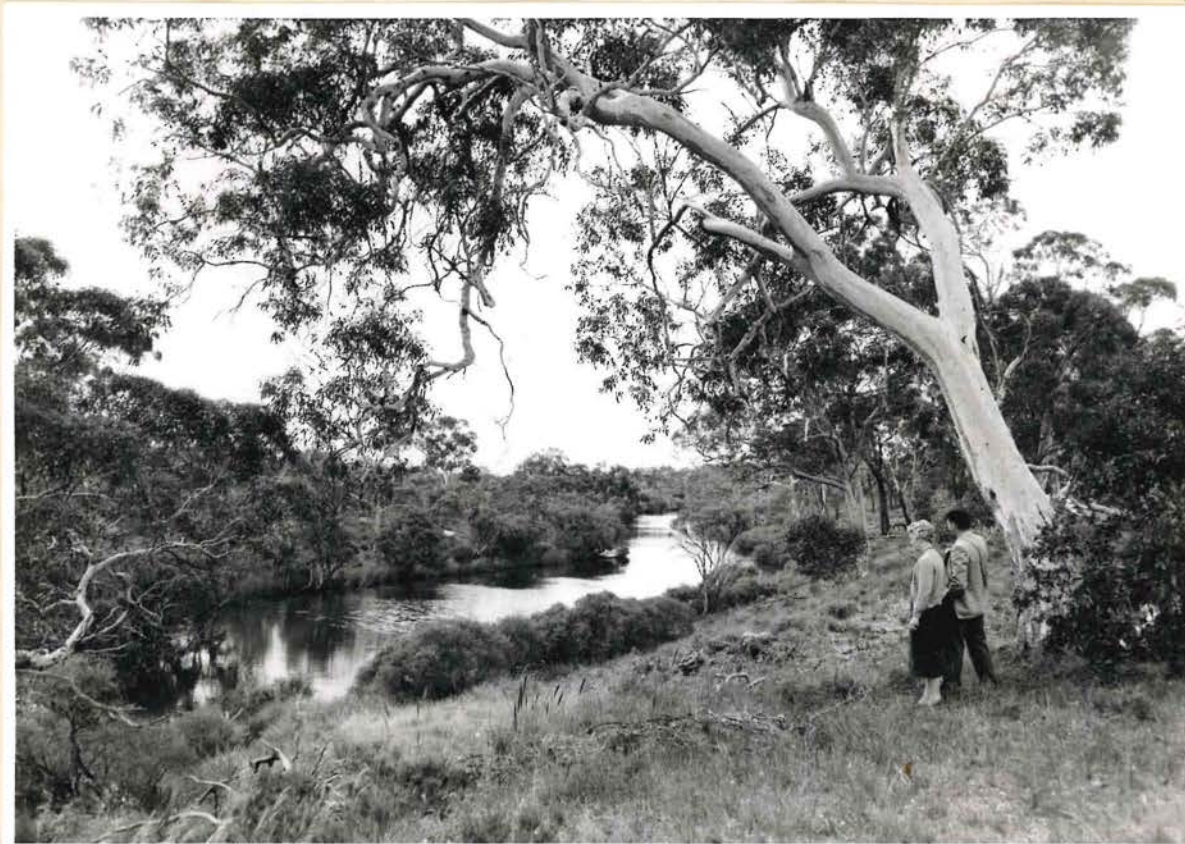
2. Karri (Eucalyptus diversicolor) in the Frankland





3. Nancy's Peak, Porongurup Range, to  
Stirling Range.

Photo W.A. Govt. Printer

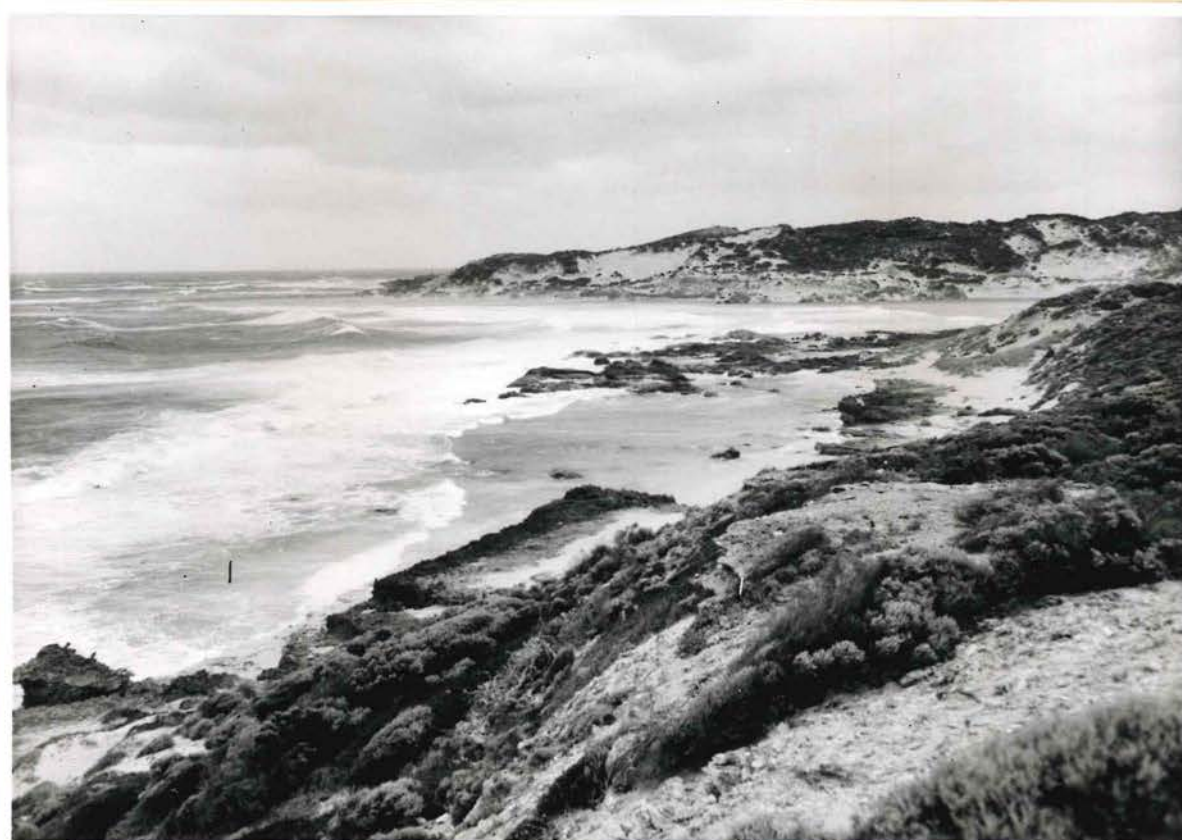


4. Upper Kalgan River, Porongurup  
Range.

Photo. W.A. Govt. Printer

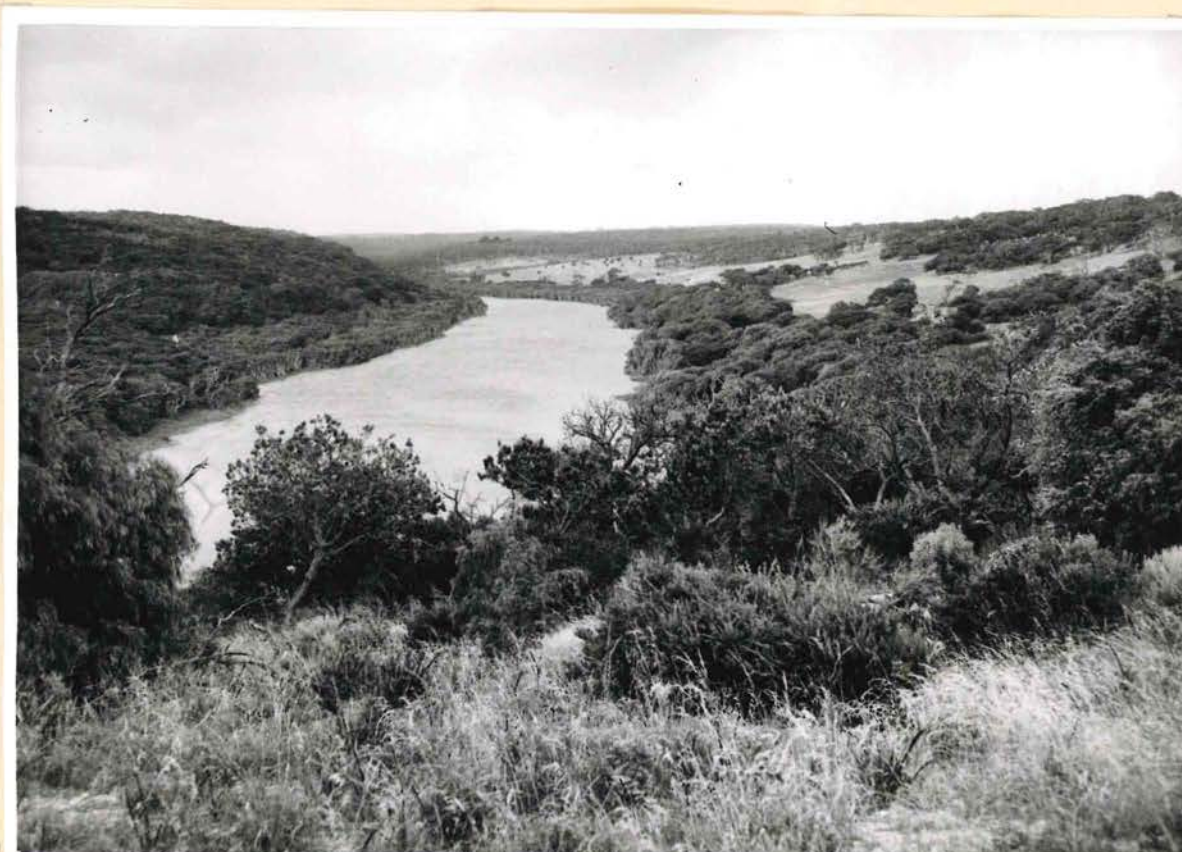


MARGARET RIVER - HAMELIN BAY AREA



1. Mouth of Margaret River: view from south to north across entrance.

Photo. Western Australian  
Government Printer



2. Margaret River from south-west bank near its mouth. Bush on left within reserve. Crown Grant (pastures) on right.

Photo. Western Australian

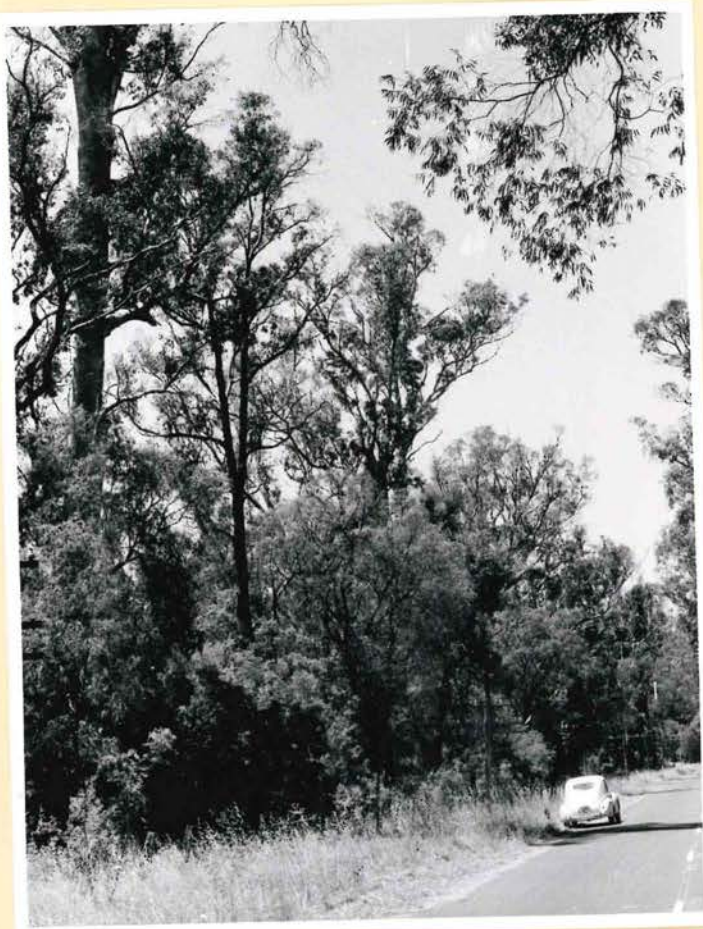


3. Lake Cave, Margaret River area.

Photo. Western Australian  
Government Printer.



LUDLOW STATE FOREST



1. Tuart with  
understorey of  
Peppermint.

Photo:  
W.D.L. Ride

2. Edge of  
Tuart  
Savannah with  
Pine plant-  
ation.

Photo:  
W.D.L. Ride





PINGELLY AND DRYANDRA RESERVES



1. Boyagin Rock Reserve.

Photo: W. D. L. Ride

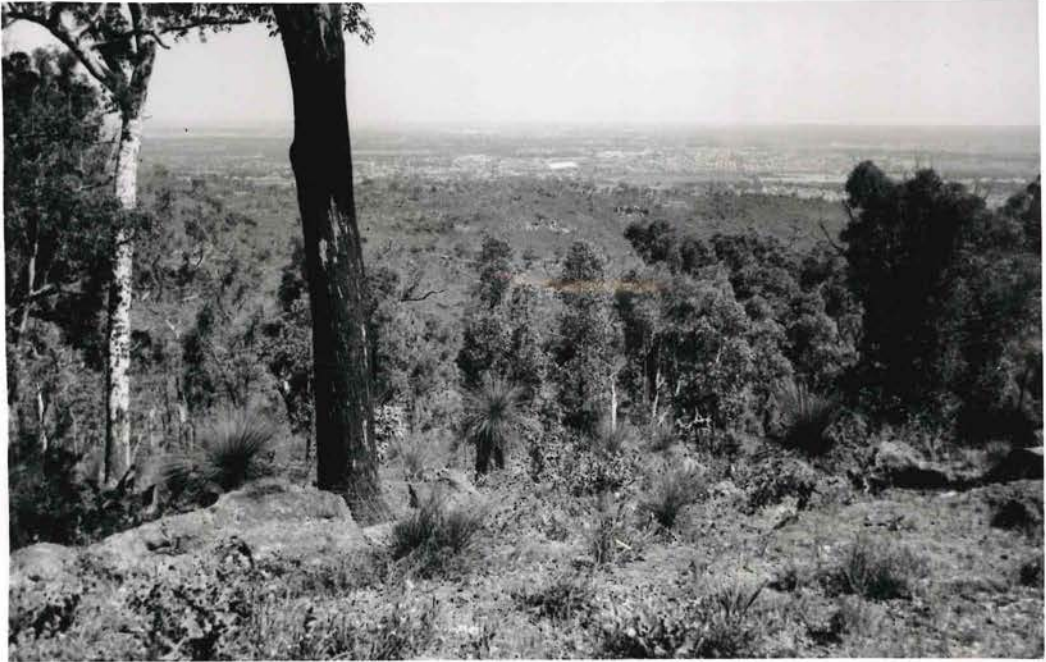


2. Wandoo Forest, Dryandra State Forest.

Photo: W. D. L. Ride

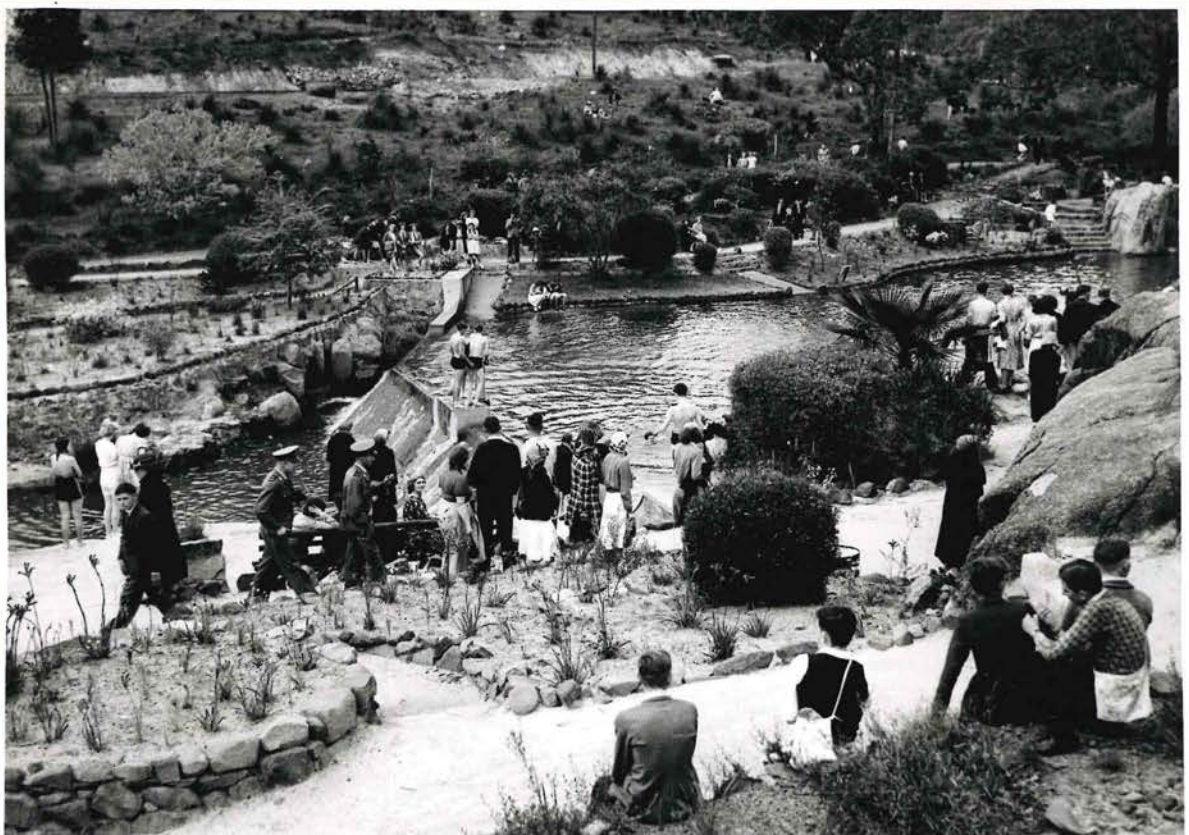


JOHN FORREST NATIONAL PARK



1. View from John Forrest National Park  
over the Swan Coastal Plain.

Photo. Western Australian  
Government Printer.



2. Swimming Pool, John Forrest National Park.

Photo. Western Australian  
Government Printer.



YANCHEP PARK

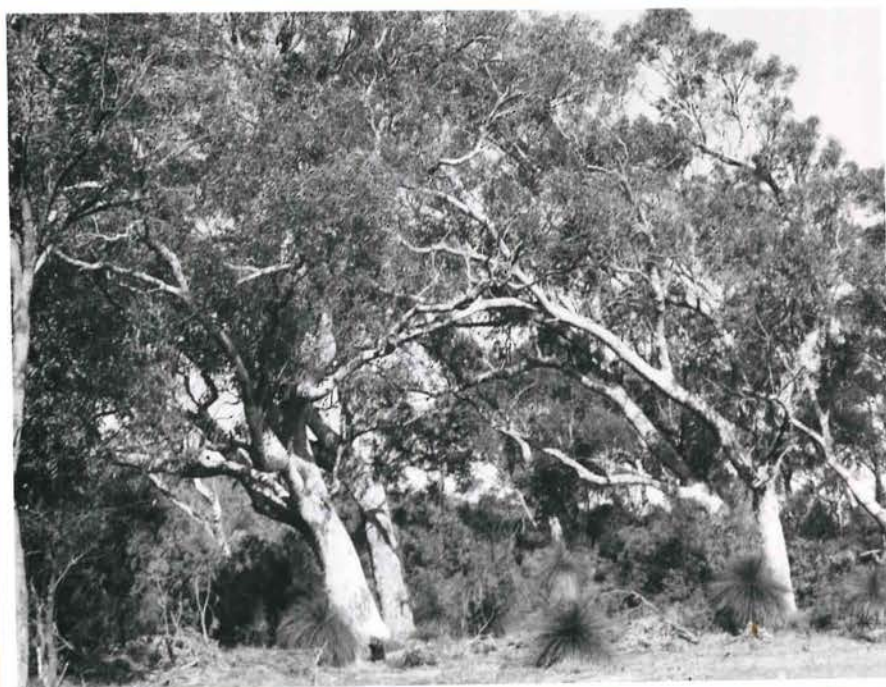
Negative  
-1



1. Boating on Loch McNess, Yanchep Park.

Photo: H. Williams

Negative  
(9)



2. Tuart (Eucalyptus gonphocephala), Yanchep Park.

Photo. H. Williams



FITZGERALD RIVER RESERVE



1. Fitzgerald River area.

Photo. C.A.Gardner



MURCHISON RIVER AREA



1. Aerial view of part of the Murchison River Gorge, showing tributary canyons following major joint planes. Note the bedding of the flat-lying Tumblagooda Sandstone, and the sand-plain (with fire patterns) extending on either side of the gorge.

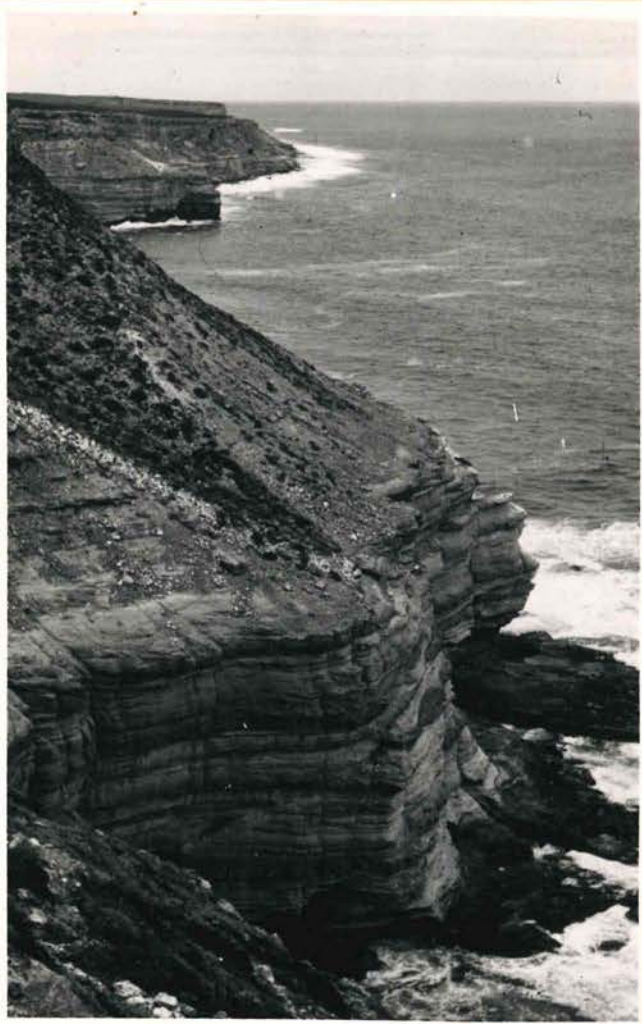
Photo. P.E.Playford.



2. View taken in the Murchison River Gorge, showing the cliffs of Tumblagooda Sandstone, a deep pool, and white gums.

Photo. P.E.Playford.



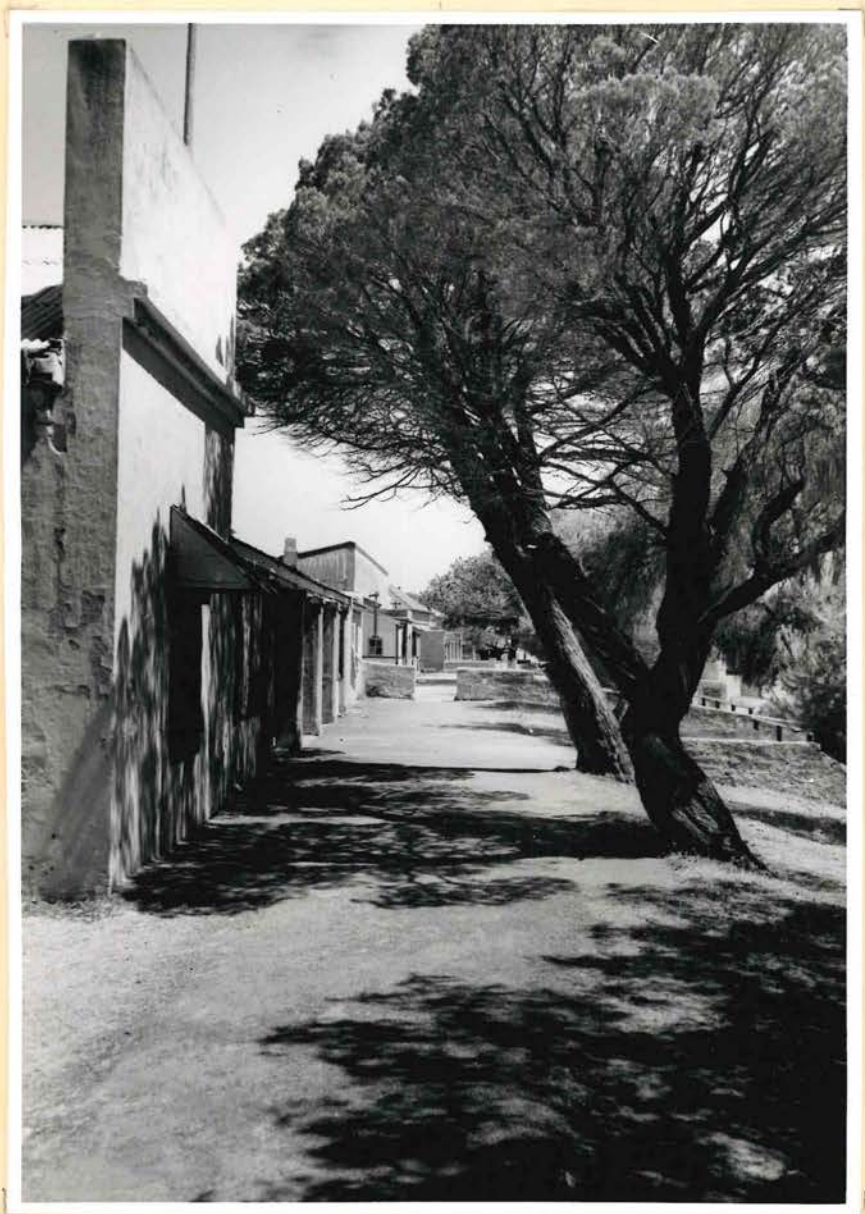


3. Cliffs of Tumblagooda Sandstone and Wittecarra Formation south of Red Bluff.

Photo. P.E. Playford.



ROTTNEST ISLAND RESERVE



1. Old cottages, Rottnest Island settlement.

Photo: Western Australian  
Government Printer





1. East end of South Twin Peaks Island,  
Recherche Archipelago.

Photo. R. W. George.



2. Fur seals, Christmas Island, Recherche  
Archipelago.

Photo. R. W. George.





3. West side Christmas Island, Recherche Archipelago.

Photo. R. W. George.



N.P.

CAPE ARID ~~RESERVE~~

APPROXIMATELY LATE 50<sup>S</sup>



1. Mount Ragged, Israelite Bay.

Photo. C.A. Gardner.



2. Coastal scene, Cape Arid Reserve.



NORTHERN NULLARBOR AREA



1. Lake Ell area: view showing the type of vegetation which is most characteristic of the desert parts of the proposed reserve.

Photo. A. R. Main



2. Joondulla water hole area: the trees in the background are Mulga, which is typical of the "good" interdune areas of the northern Nullarbor.

Photo. A. R. Main



LAKE DISAPPOINTMENT AREA



1. Savannah,  $23^{\circ}23' S$ ,  $121^{\circ}E$



2. Sand ride, Savory Creek - About  
20 miles east of Jigalong Mission.

19



QUEEN VICTORIA SPRINGS AREA



1. Queen Victoria Spring from the west of the claypan looking to the south.

Photo. W. H. Butler



DAMPIER ARCHIPELAGO



1. North-eastern corner of  
Enderby Island

Photo: B. Wilson

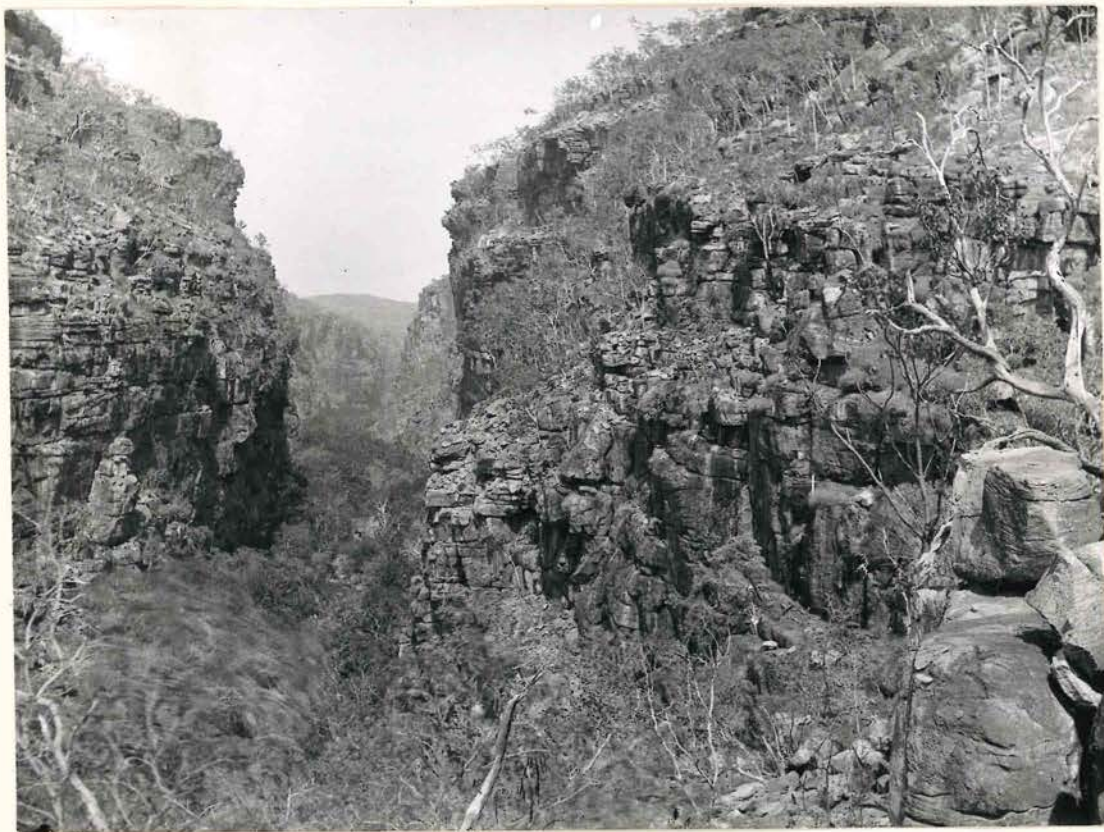


2. South-western end of Dolphin  
Island. Flying Foam and  
Angel Island in background.

Photo: B. Wilson

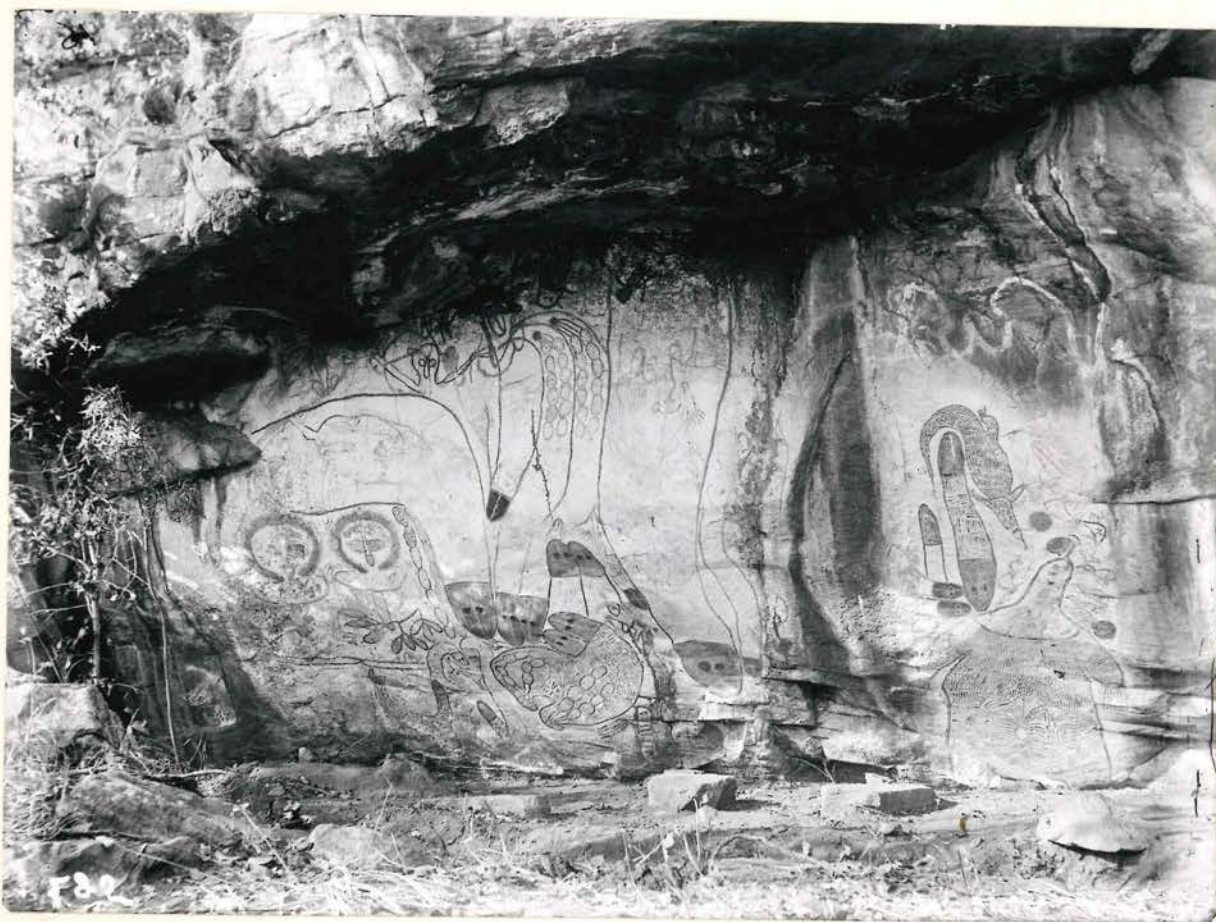


PRINCE REGENT RIVER AREA



1. Typical sandstone gorge. A branch of Prince Regent River near Mount Hann.

Photo. Dr F. M. House.



2. Near Mount Hann.

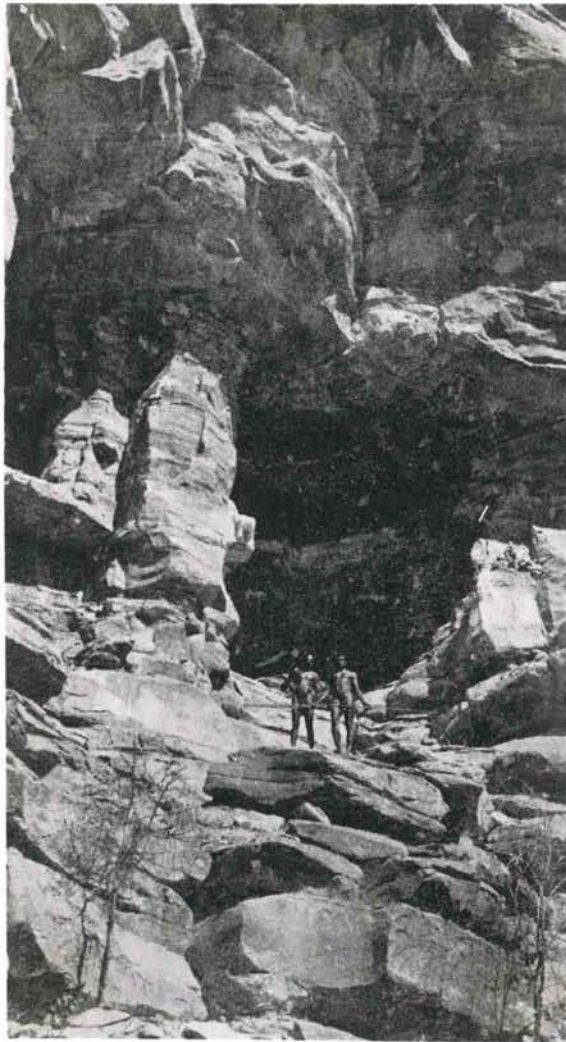
Photo. Dr F. M. House.



DRYSDALE RIVER AREA

Use this pic  
P3 CAHM NEWS  
Drysdale  
DIC x 12cm

1069 →



Wonjarring near Larryoo

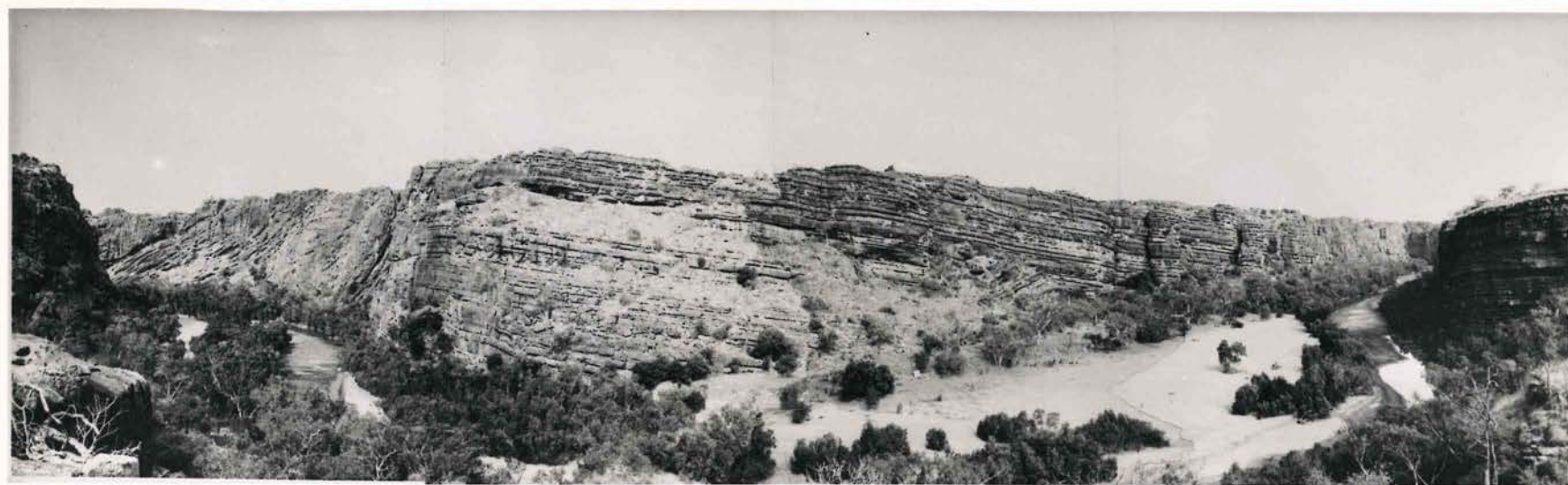
Photo. by J.F.Morgan



Bed of creek above Morgan Falls on the  
Palmoondoorra Creek.

Photo. by J.F.Morgan

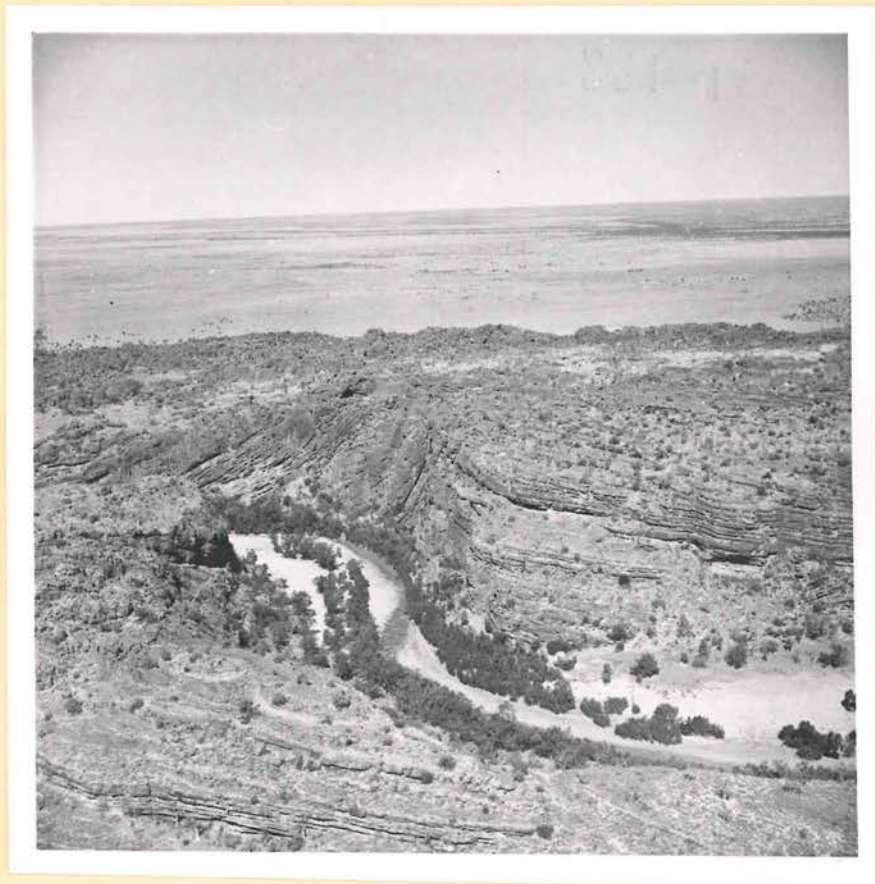




1. Panoramic view of part of Windjana Gorge, showing excellent exposures of the ancient reef complex

Photo: P.S. Playford.





2. Aerial view of part of Windjana Gorge.

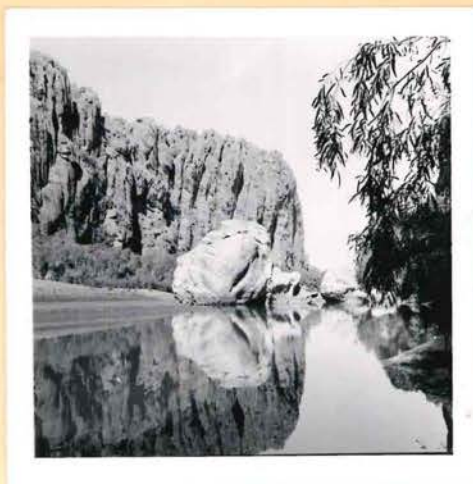


3. View looking east in Windjana Gorge, over Wingrah Pool.

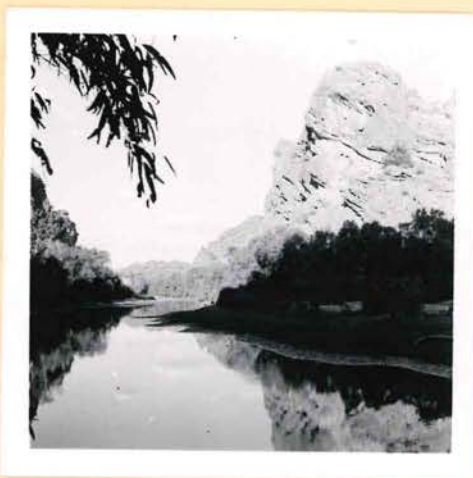




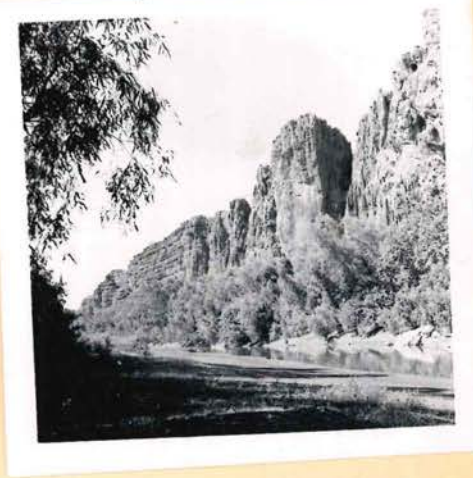
4. Windjana Gorge west entrance



5. Windjana Gorge, looking west over Wingrah Pool.



6. Windjana Gorge, looking east over Wingrah Pool.

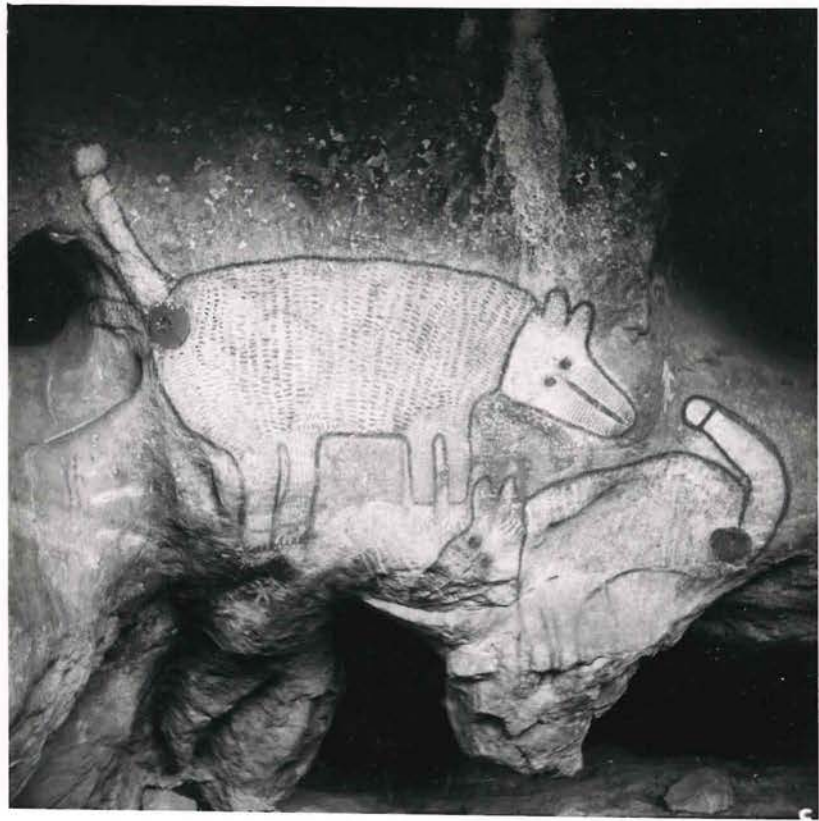


7. Windjana Gorge, central part.

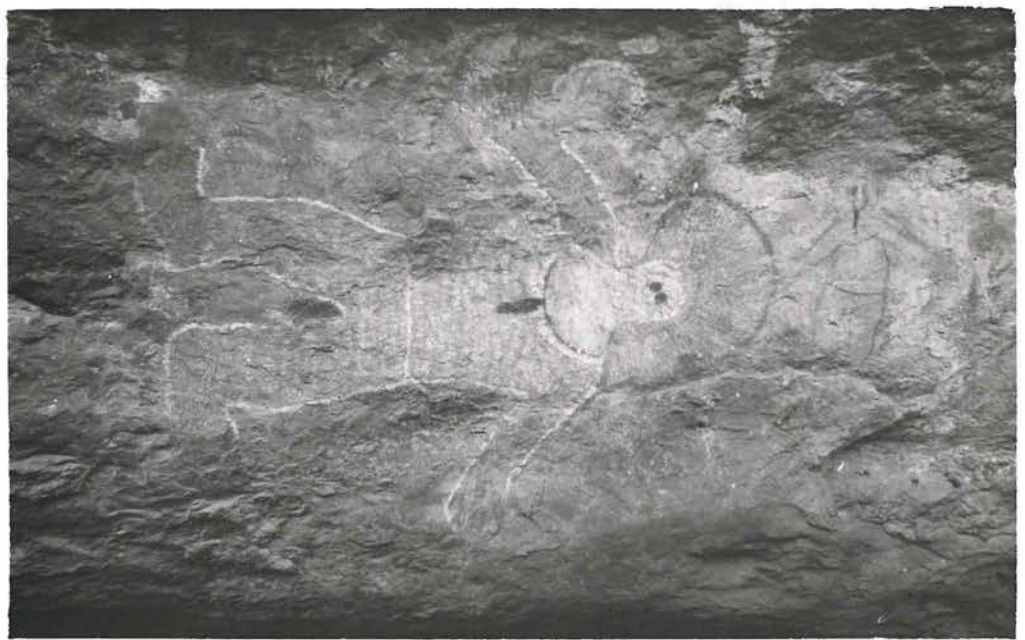


8. Wandjina (rain god) painting on right, Nura Nura (lightning man) painting on left, in cave near east entrance to Windjana Gorge



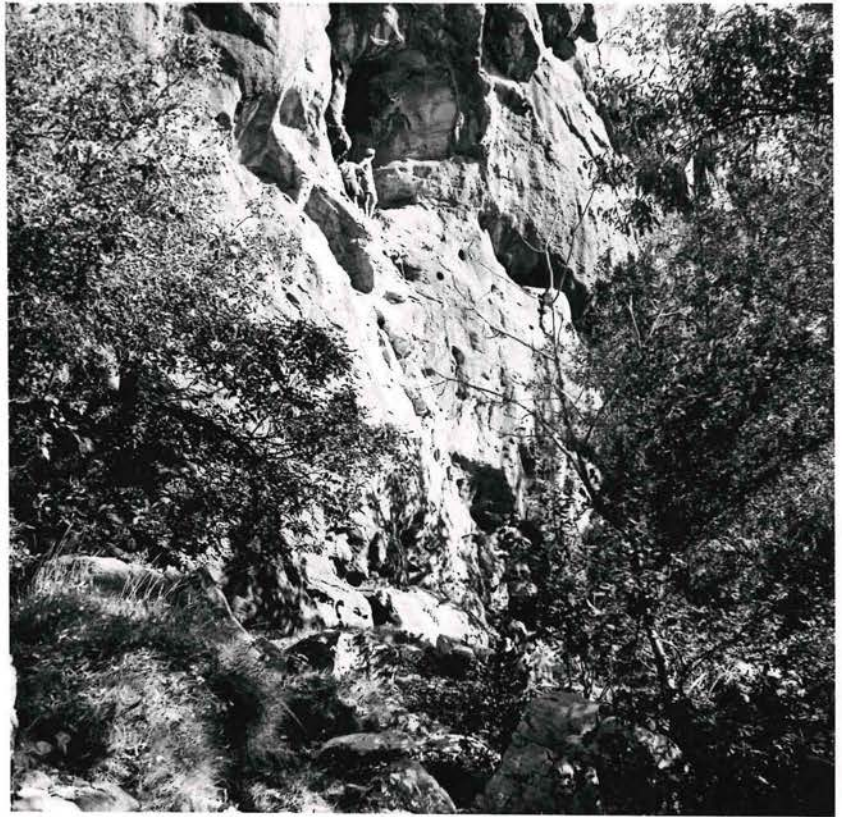


9. Dingo paintings at Burralumma Spring,  
near Windjana Gorge.



10. Wandjina painting near Windjana Gorge.



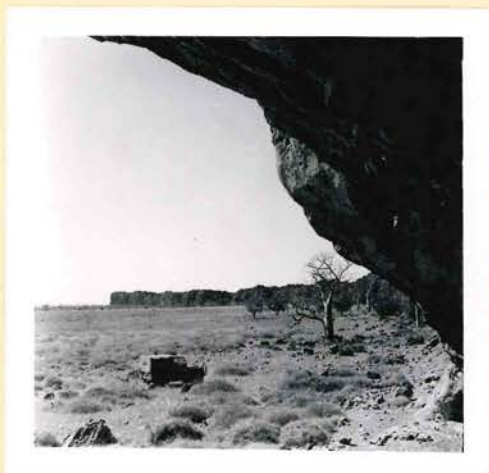


11. Cave beside Linesman Creek, Oscar Range, showing Aboriginal paintings.

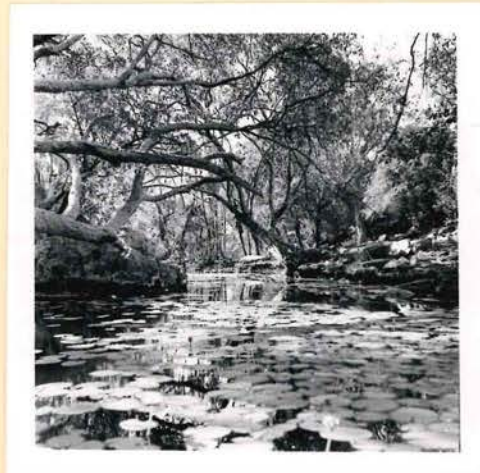


12. Numerous Aboriginal paintings decorating wall of rock shelter below the northern wall of the Oscar Range.





13. Rock shelter at foot of cliff on northern side of Oscar Range.



14. Wire Spring (Bulluloo) on the northern side of Oscar Range.



15. Brooking Gorge, looking north-north-east.