



(1)

PTILOTUS CALOSTACHYS -

shrub to 3 feet



(2)

SIDA SP. in with

Ptilotus calostachys -

low shrub 18 inches



(3)

SOLANUM FERROCISISSIMUM -

shrub 4 feet - black

fruits



(4)

CASSIA SP. in flower

and pod - shrub

2 feet



(5)

PTILOTUS EXALTATUS -

annual 2 feet



(5)A.

PTILOTUS EXALTATUS



. 79-B

5121



(6)

COMPOSITE SP. -

annual 2 feet



(7)

IPOMOEA MUELLERI -

excellent ground cover



(8)

SWAINSONA MACULLOCHIANA

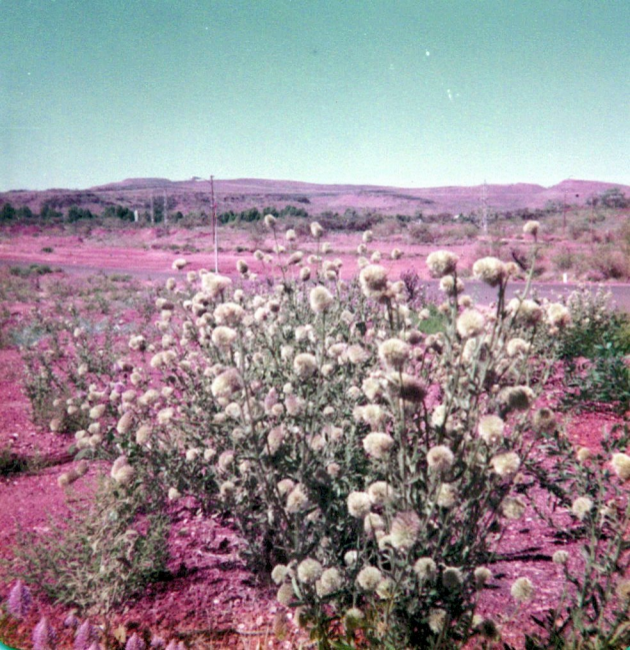
- annual 6' - 10'



(9)

SWAINSONA MACULLOCHIANA

JAN 29-B



(10)

PTILOTUS SP. -

annual to 3 feet



(11)

PTILOTUS SP. - annual

to 3 feet



JAN.



. 78-B

. 78-B

(13)

SOLANUM LASIOPHYLLUM





14
JAN. 79-R

JAN 79 R

JAN. 79

(14)

CASSIA NOTABILIS -
seedlings after fire



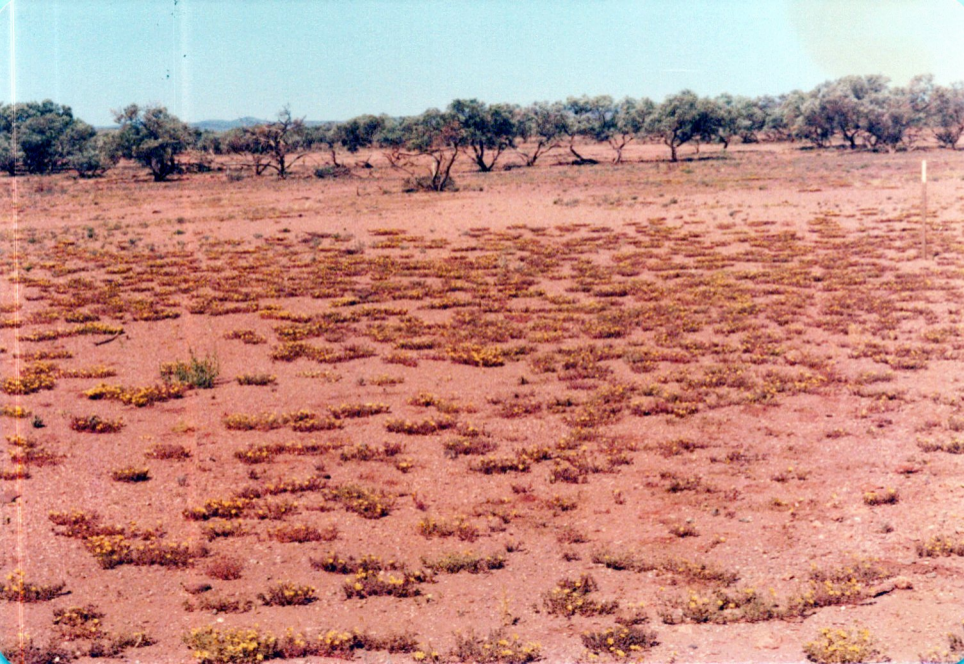


(15)

PORTULACA SP. -

prostrate on heavy

soil



(16)

PORTULACA SP. -

prostrate on heavy
soil



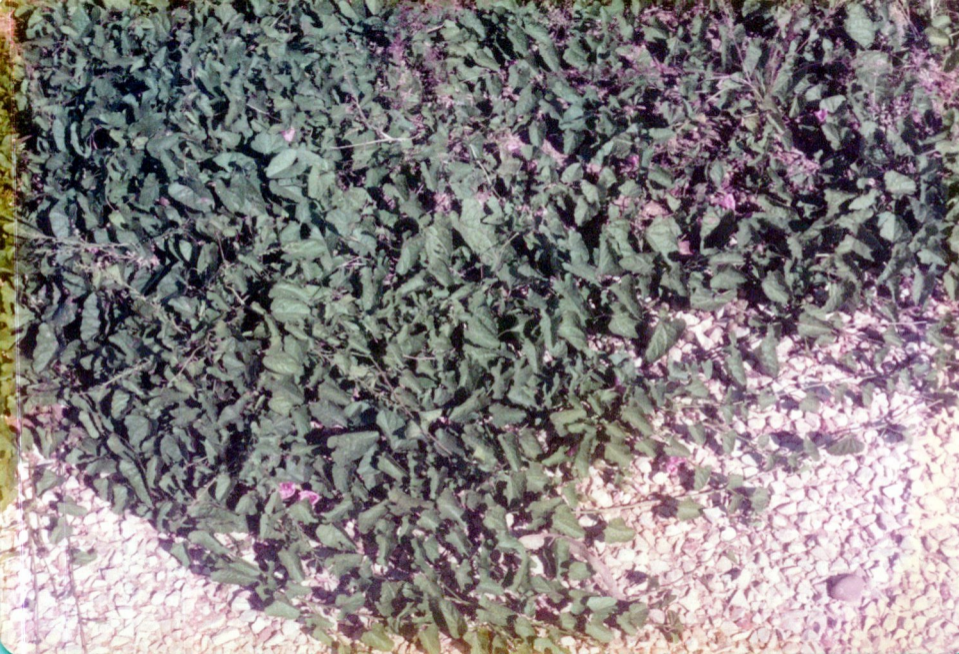
(17)

PTILOTUS AXILLARIS -

prostrate

SE
19
19

SE



SEPT

(18)

IPOMOEA MUELLERI -
prostratePRINT
LAGE
V
OGAR



19

(19)
PORTULACA SP. on
heavy soil

PRINT
MADE
BY
KODAK



PRINT
MADE
BY
KODAK

SEPT. 1

SEPT. 78-B

SEPT. 78-B