



(1)

GOODENIA STAPFIANA -

shrub to 2 feet

ak



JAN 70 D

JAN 70 D

(2)

PTILOTUS EXALTATUS -

annual herb - 2 feet





(3)

PTILOTUS ROTUNDIFOLIUS

- woody shrub - perennial
- suckering

odal

(4)

CASSIA PLEUROCARPA -

shrub 2 feet x 6 feet

perfumed

MISSING PHOTOGRAPH



(5)

CASSIA PLEUROCARPA

B





9
S
(6)

PERENNIAL HERB in stony
soil - matt



7
EPT. 78

(7)

PERENNIAL HERB in
stony soil

SEPT. 73-

PRINT
MADE
BY
KODAK

PRINT
MADE
BY
KODAK





8
(8)

CASSIA SP. - 5 feet

PRINT
MADE
BY
KODAK



9
SEP

(9)

DODONAEA ATTENUATA -
shrub 5 feet in Mulga
country

PREPARED BY KOD

9

(10)

DODONAEA ATTENUATA

PRINT
MADE
BY
KODAK



PRINT
MADE
BY
KODAK



MISSING PHOTOGRAPH

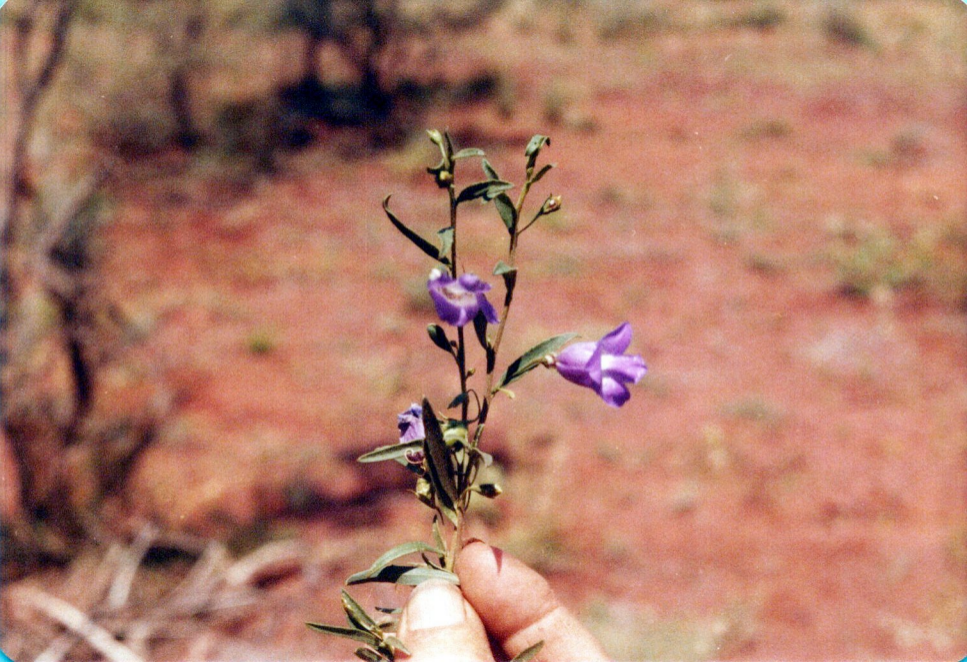


9
S
(11)

EREMOPHILA SP. on

watercourse near

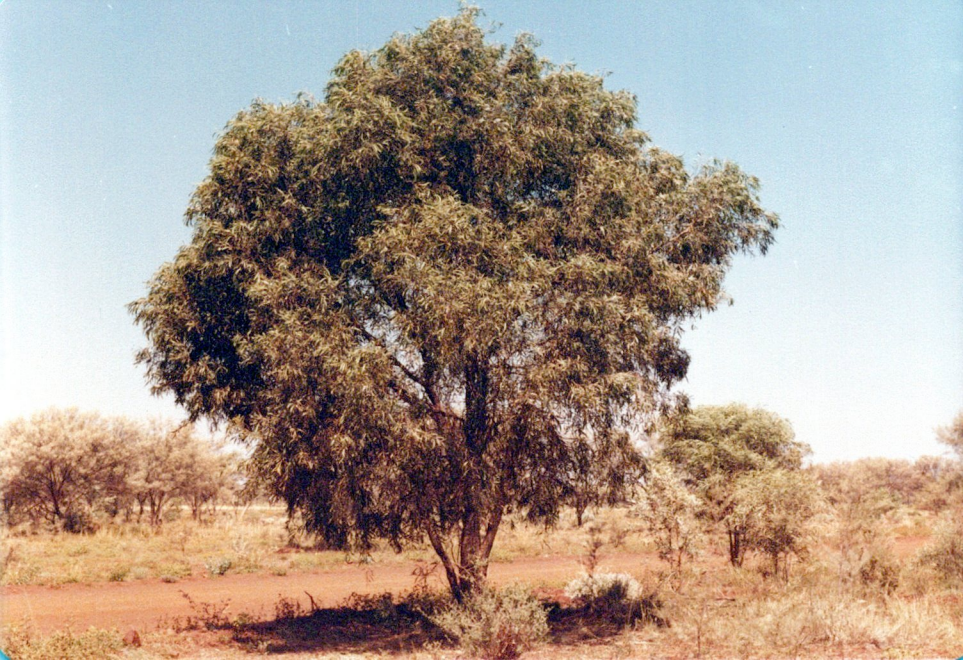
Mt. Bruce - 12 minches



9
SE
(12)

EREMOPHILA SP. - near

Mt. Bruce



SEI

(13)

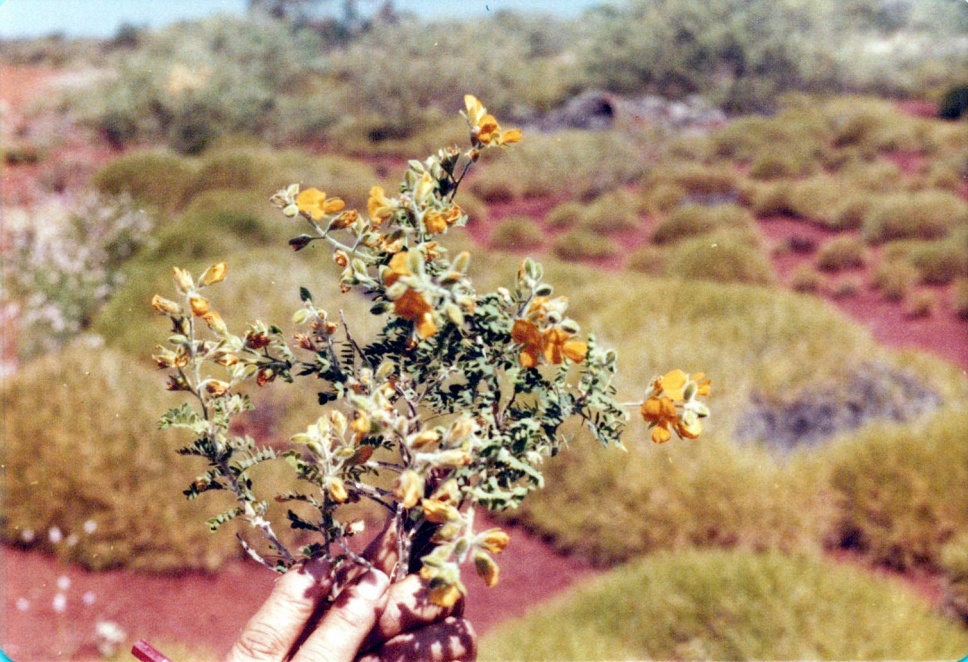
ACACIA SP. - nice tree -
10 feet - near Mt. Bruce



SEP1 (14)

SANDALWOOD - SANTALUM
SPICATUM - tree 8 feet
in fruit

PRINT
MAC
BY
KOD



9
(15)

BURTONIA POLYZYGA -

spreading shrub -

18 inches - Hamersley

National Park



SEP

(16)

BURTONIA POLYZYGA

PR
MA
BY
KO

SI

PR
MA
BY
KO



9
SEI (17)

GOODENIACEA SP. near

Mt. Bruce