

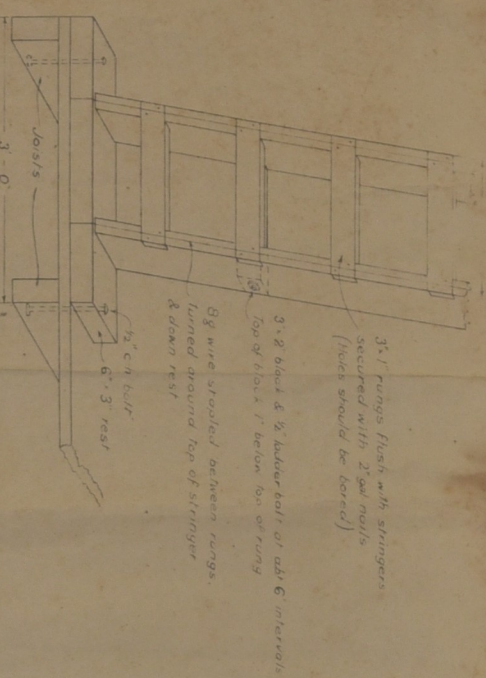
534

STANDARD 110FT  
LOOKOUT TOWER

MANULIF SCIENCE LIBRARY  
HELD (MAP)  
324666  
Standard 110 ft lookout tower  
[cartographic material]  
DEPARTMENT OF ENVIRONMENT AND CONSERVATION

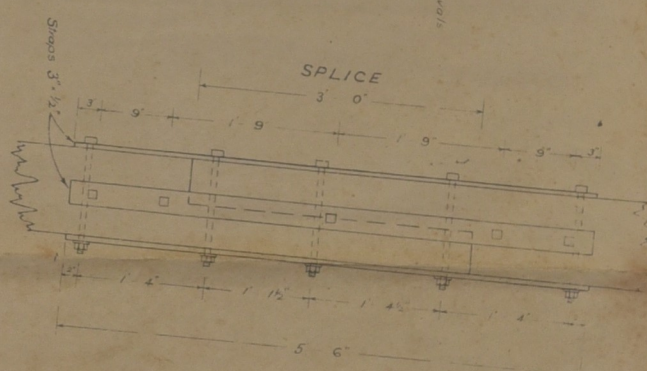
55

DETAIL OF LADDER

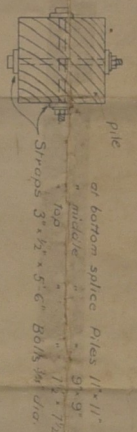


3x1 rungs flush with stringers  
secured with 2 gal nails  
(nails should be torced)

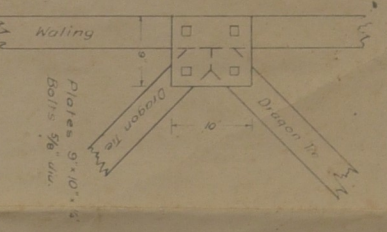
3x2 bolts & 6 ladder feet at each 6' intervals  
Top of 1 bolt 1' below top of stringer  
& down rest  
8x wire strung between rungs  
lashed around top of stringer  
& down rest  
1/2" x 1" x 1/2" x 1" rest



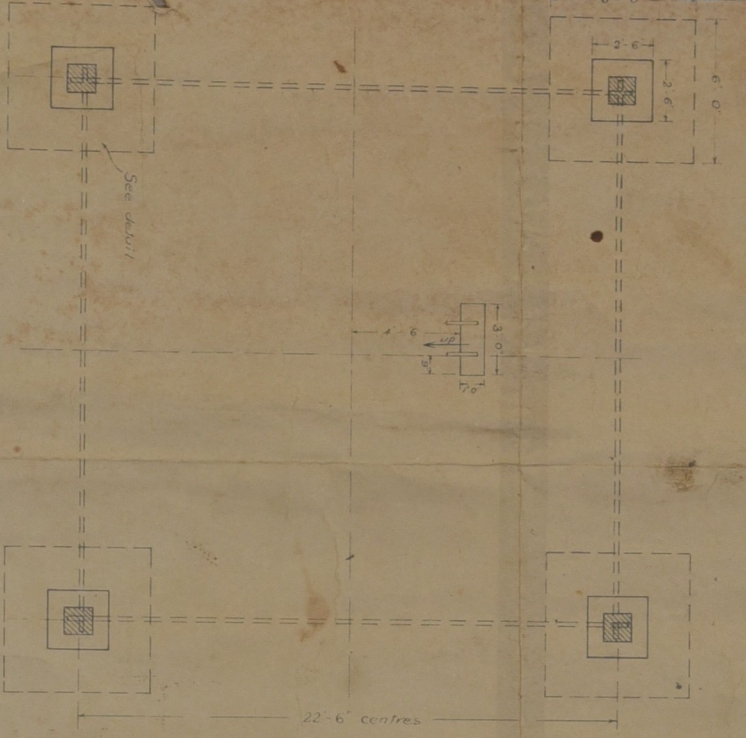
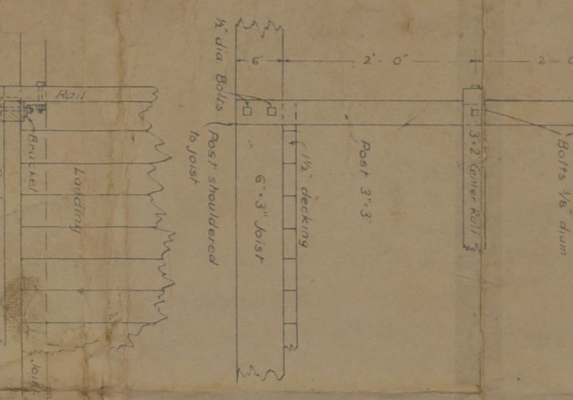
DETAIL OF SPLICES



DETAIL DRAGON TIES  
TO WALINGS



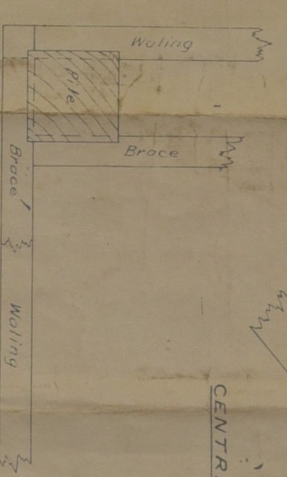
DETAIL LANDINGS, RAILS ETC.



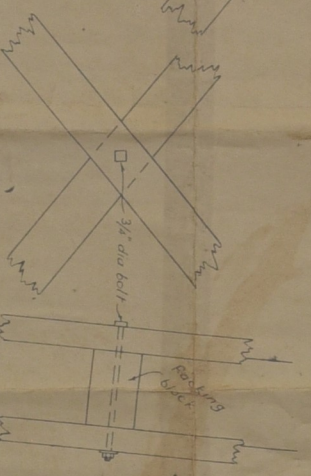
GROUND PLAN

FOR IRON WORK SEE SHEET 4

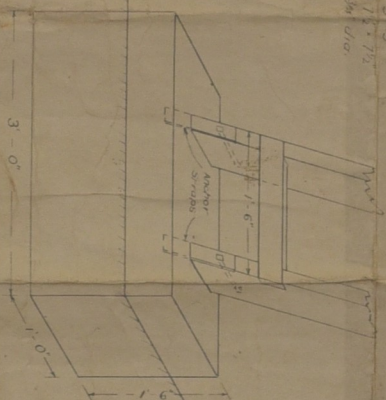
DETAIL OF WALINGS & BRACES



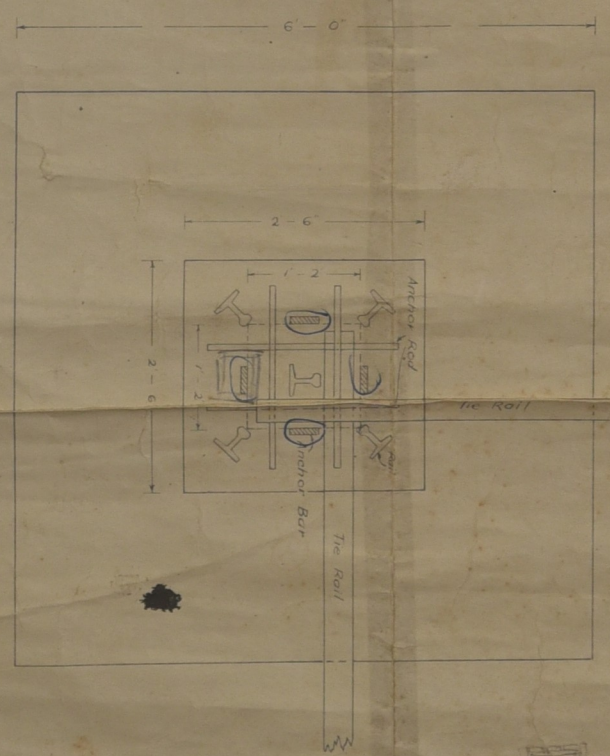
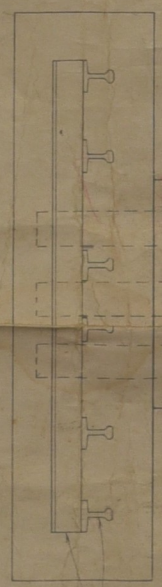
CENTRE OF BRACES



GROUND LADDER RAIL



SECTION



CONCRETE FOUNDATION

PLAN

ONE FOOT TO AN INCH

STANDARD 110FT LOOKOUT TOWER

FD PLAN NO 892 SHEET 2

Orig. out of date  
R. H. McNeill  
28-2-73

535