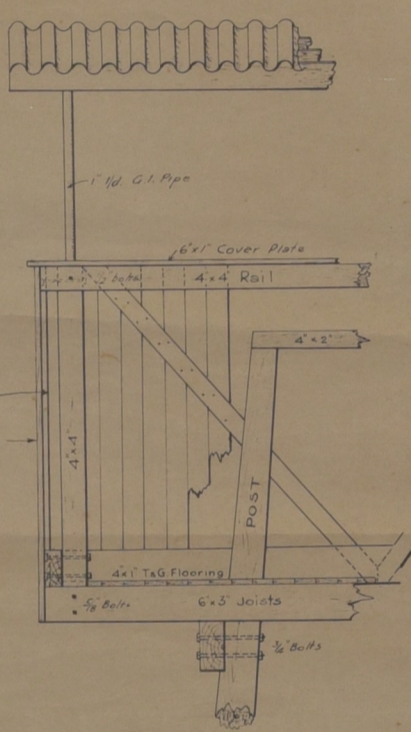
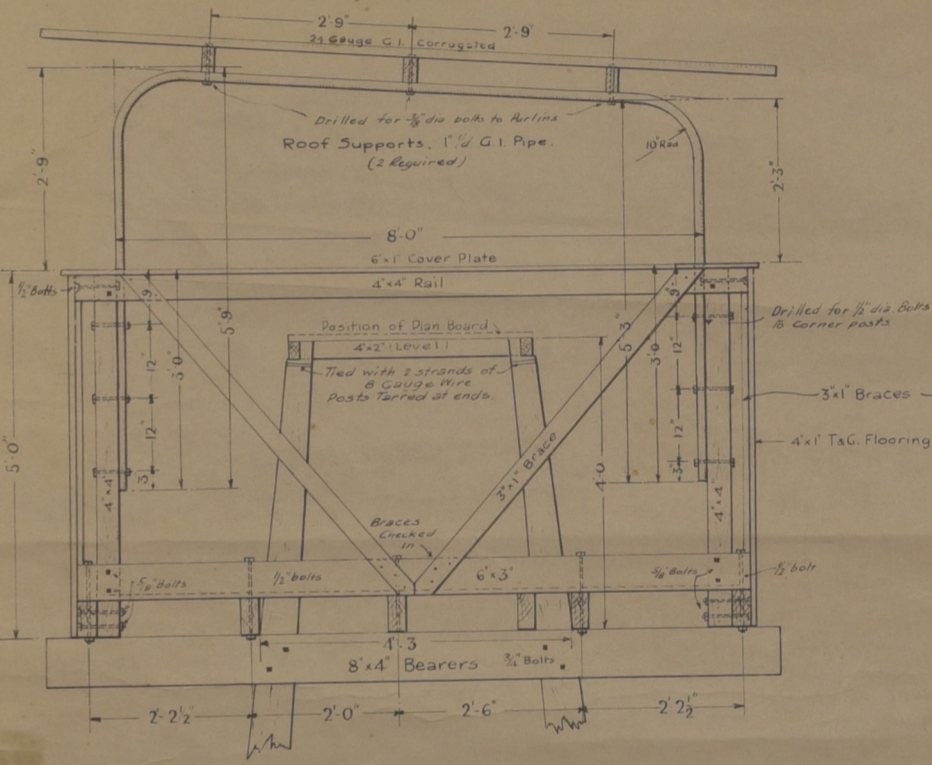
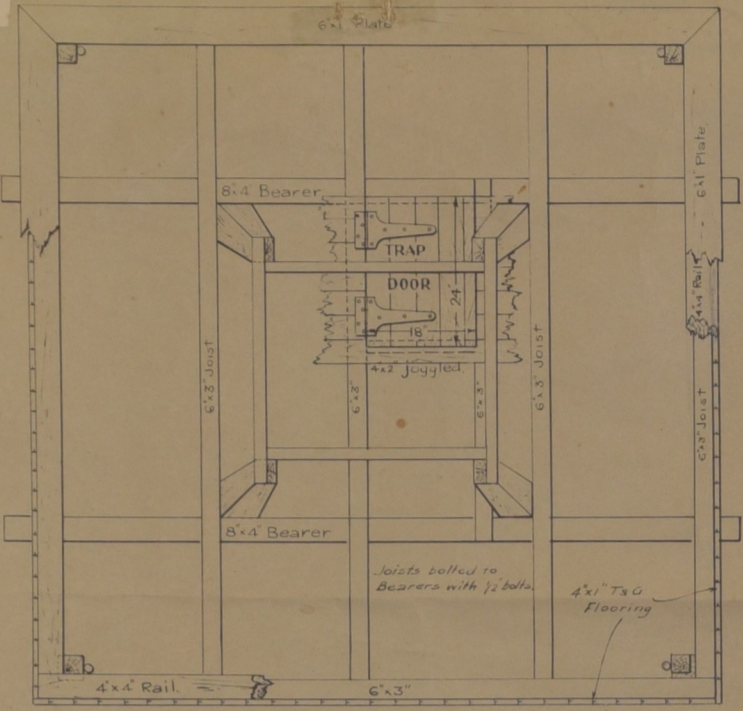


35

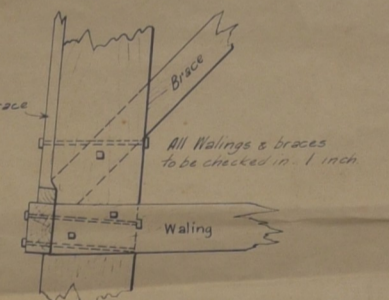
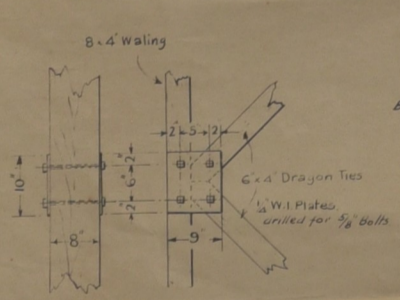
STANDARD 125FT LOOKOUT TOWER - DETAILS

MAKUP SOURCE LIBRARY
HELD (MAP) 924672
Standard 125 ft lookout tower
(cartographic material) - details
DEPARTMENT OF ENVIRONMENT AND CONSERVATION

334

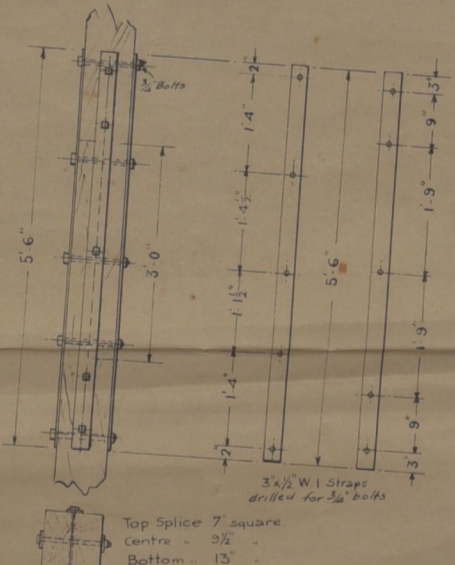


DETAILS of CABIN
Scale 1" = 1ft.

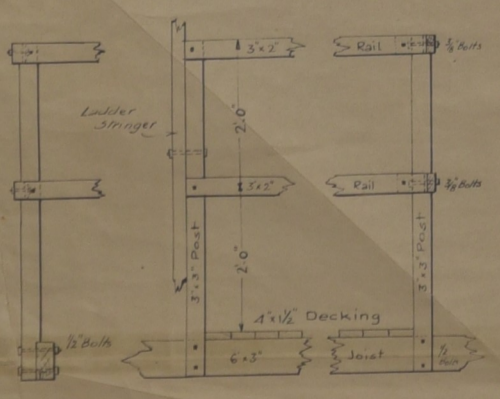


JUNCTION of DRAGON TIES.
(1/2 W1 Plates, 24 Required)

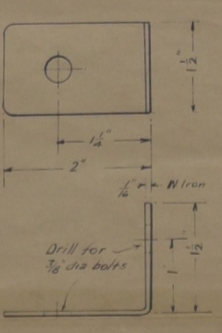
DETAIL of WALINGS & BRACES.
Scale 1" = 1ft



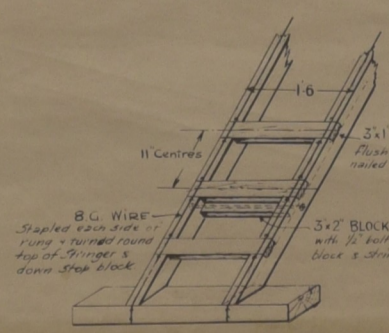
DETAILS of SPLICE
Splice straps, 3x1/2 W1 3 sets (24 pairs) Required
Scale: 1" = 1ft.



DETAILS of POSTS & RAILS at LANDINGS.
Scale 1" = 1ft



LANDING RAIL BRACKET (24 Required)
Scale Full size



DETAIL of LADDER
Scale 1" = 1ft

LIST of QUANTITIES.

JARRAH.		
Description	Size	Quantity
Poles	7" Crown 10" Butt	41 26' 0"
	10" - 13 1/2"	41 35' 0"
	13 1/2" - 18"	41 45' 0"
	18" - 24"	41 47' 0"
Walings 5mm	12" x 4"	41 27' 6"
	10" x 4"	41 23' 0"
	8" x 4"	41 13' 0"
	6" x 4"	41 16', 41 13' 6", 41 6", 41 6", 41 6", 41 6"
Bearers	8" x 4"	21 10' 6"
Dragon Ties	6" x 4"	41 13' 6", 41 3' 6", 41 6' 6"
Joists (Landings)	6" x 3"	51 10' 0"
	6" x 4"	41 23' 0"
	6" x 3"	31 19' 0", 41 16' 0", 31 16' 6", 31 16' 6", 31 8' 0"
Cabin door trimmers	6" x 3"	11 5' 0"
	4" x 2"	11 2' 0"
Side supports	6" x 3"	21 10' 0"
posts	4" x 4"	41 3' 6"
top rail	4" x 2"	41 10' 0"
braces	3" x 1"	81 6' 6"
floor walks (T&G)	4" x 1"	401 10' 0" 1001 5' 0"
purlins	4" x 2"	31 10' 0"
cover plates	6" x 1"	41 10' 0"
plan top	4" x 2"	41 4' 0"
Ladder stringers	5" x 2"	21 32' 0", 21 25' 6", 21 21' 0", 21 18' 0", 21 6"
	4" x 2"	21 14' 0", 21 13' 6", 21 12' 0", 21 7' 0"
rungs	3" x 1"	300 lineal feet
Support	5" x 2"	11 25' 0"
roofs	6" x 3"	81 4' 0"
	12" x 12"	11 3' 0"
Hand rail (7x8 landings)	3" x 2"	31 7' 6", 31 6' 6"
Landing posts	3" x 3"	241 4' 6"
rails	3" x 2"	41 4' 0", 41 4' 6", 21 1' 0", 81 5' 0", 241 2' 0", 21 0"
Braces	6" x 3"	81 34' 0", 81 29' 0", 81 24' 0", 81 20' 0", 81 15' 0"
	5" x 3"	81 14' 0", 81 12' 6"
	4" x 3"	81 10' 6", 81 9' 0", 41 8' 6"
Decking for landings	4" x 1 1/2"	121 4' 6", 121 5' 0", 401 6' 0", 121 7' 0"
Sole plates	6" x 4"	121 3' 0"
HARDWARE.		
Description	Size	Quantity
Coal Tar		8 gallons
Corrugated G. Iron	24G.	61 10' 0"
Spring head nails	2 1/2"	1 packet
Galv nails	10G x 2"	16 lbs
Nails	10G x 3"	16 lbs
T. hinges for Cabin door	12"	1 pr. with screws
Tower bolt	8"	1
Roof supports	1 1/4" G.I. Pipe	2 drilled to sketch
Splice straps	3x1/2 W1	24 pr.
Dragon plates	1/4" W1	12 pr.
Rail brackets	1/4" W1	24
Fencing wire	8g.	400ft
Staples	1 1/2" Galv	4 lbs
Lightning conductor, Earth plate, & 145ft cable ex P.W.D.		
BOLTS & NUTS.		
Purlins to roof supports	3/8 dia 5/8 hd	6. 6 1/2" long 2" thread
Roof supports to Cabin posts	1/2 dia	12. 6 1/2" - 2"
Rail to Cabin posts	1/2 dia	8. 8" - 2"
Cabin posts to floor joists	3/8"	16. 8" - 2"
	6x3 plates	16. 8" - 2"
6x3 plates - joists	1/2"	10. 13" - 2"
Joists to bearers	1/2"	10. 14" - 2"
Walings 1st landing	3/8"	4. 17" - 2"
	2nd	6. 15" - 2"
Dragon 2nd	1/2"	6. 15" - 2"
Walings 3rd	3/8"	8. 13" - 2"
	2nd 108"	11. 30. 13" - 2"
Dragon 4th 86"	1/2"	10. 13" - 2"
Dragon to Walings 2nd	3/8"	16. 9" - 2"
	4th 86"	32. 7" - 2"
Ladder beams to joists	1/2" dia cup hd	16. 10" - 2"
to platform joists	1/2"	16. 10" - 2"
Handrail to braces 7th 8th landings	3/8 dia 3/4 hd	12. 6" - 2"
Landing posts to joists	1/2"	48. 6" - 2"
Rails around landings	3/8" dia cup hd	24. 5" - 1"
Rail bracket	3/8"	24. 5" - 1"
Ladders to rail posts	3/8"	24. 2 1/2" - 1"
rails	1/2"	6. 6" - 1"
3x2 Support	1/2"	2. 10" - 2"
Support to braces	1/2" dia 3/4 hd	2. 10" - 2"
block & stringers	1/2"	21. 19" - 2"
Bearer to Tower poles	3/8"	8. 10" - 2"
Walings 5th landing	3/8"	16. 10" - 2"
	7th	16. 11" - 3"
	6th	16. 11 1/2" - 3"
	5th	16. 12" - 3"
	4th	16. 13" - 3"
	3rd	16. 14" - 3"
	2nd	16. 16" - 3"
	1st	16. 18" - 3"
	Bottom	16. 21" - 3"
Top of top braces	3/8"	8. 9" - 3"
Centre	3/8"	4. 11" - 3"
Bottom	3/8"	8. 9" - 3"
Top 8th	3/8"	8. 9" - 3"
Centre	3/8"	4. 11 1/2" - 3"
Bottom	3/8"	8. 10" - 3"
Top 7th	3/8"	8. 10" - 3"
Centre	3/8"	4. 12" - 3"
Bottom	3/8"	8. 10 1/2" - 3"
Top 6th	3/8"	8. 10 1/2" - 3"
Centre	3/8"	4. 13" - 3"
Bottom	3/8"	8. 11" - 3"
Top 5th	3/8"	8. 11" - 3"
Centre	3/8"	4. 14" - 3"
Bottom	3/8"	8. 12" - 3"
Top 4th	3/8"	8. 12" - 3"
Centre	3/8"	4. 15" - 3"
Bottom	3/8"	8. 13" - 3"
Top 3rd	3/8"	8. 13" - 3"
Centre	3/8"	4. 16" - 3"
Bottom	3/8"	8. 15" - 3"
Top 2nd	3/8"	8. 15" - 3"
Centre	3/8"	4. 18" - 3"
Bottom	3/8"	8. 17" - 3"
Top 1st	3/8"	8. 17" - 3"
Centre	3/8"	4. 21" - 3"
Bottom	3/8"	8. 20" - 3"
Splice 2nd 62y.	3/8"	40. 8 1/2" - 3"
	4th	40. 11" - 3"
	7th	40. 14 1/2" - 3"
Washers	3/8"	80
	1/2"	300
	3/8"	350
	1/2"	1000

NOTE: Bolts and Nuts must be parcelled up and labelled as above.

STANDARD 125ft LOOKOUT TOWER - DETAILS

F.D. Plan No 698.
Sheet No 2
Drawn by Wood, P. Wood, P. Wood, P. Wood

924674