

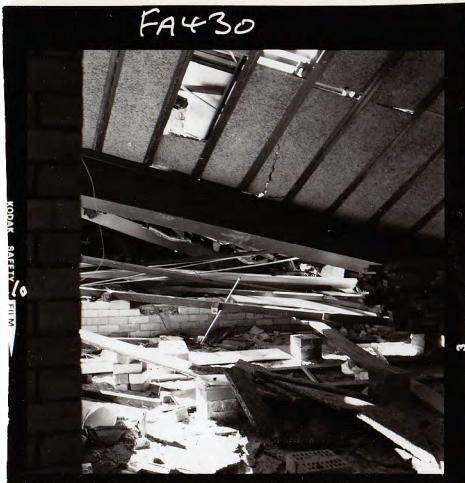
650

SERIAL No. F.D. 4351

970449 ADMIN
INDEX SECTION SAFETY

SUBJECT
Collapsed gym at John
Forester High School
Collapsed because of
poor engineering.

DO NOT REMOVE FROM PUBLICITY OFFICE



TAKEN BY

REFERENCES FA 430/7-12.

SIZE OF NEG. 2 1/4" Date