

6431100

CPS PEATY CLAY
LS₁ LIMESTONE
S₇ SAND
S₈ SAND

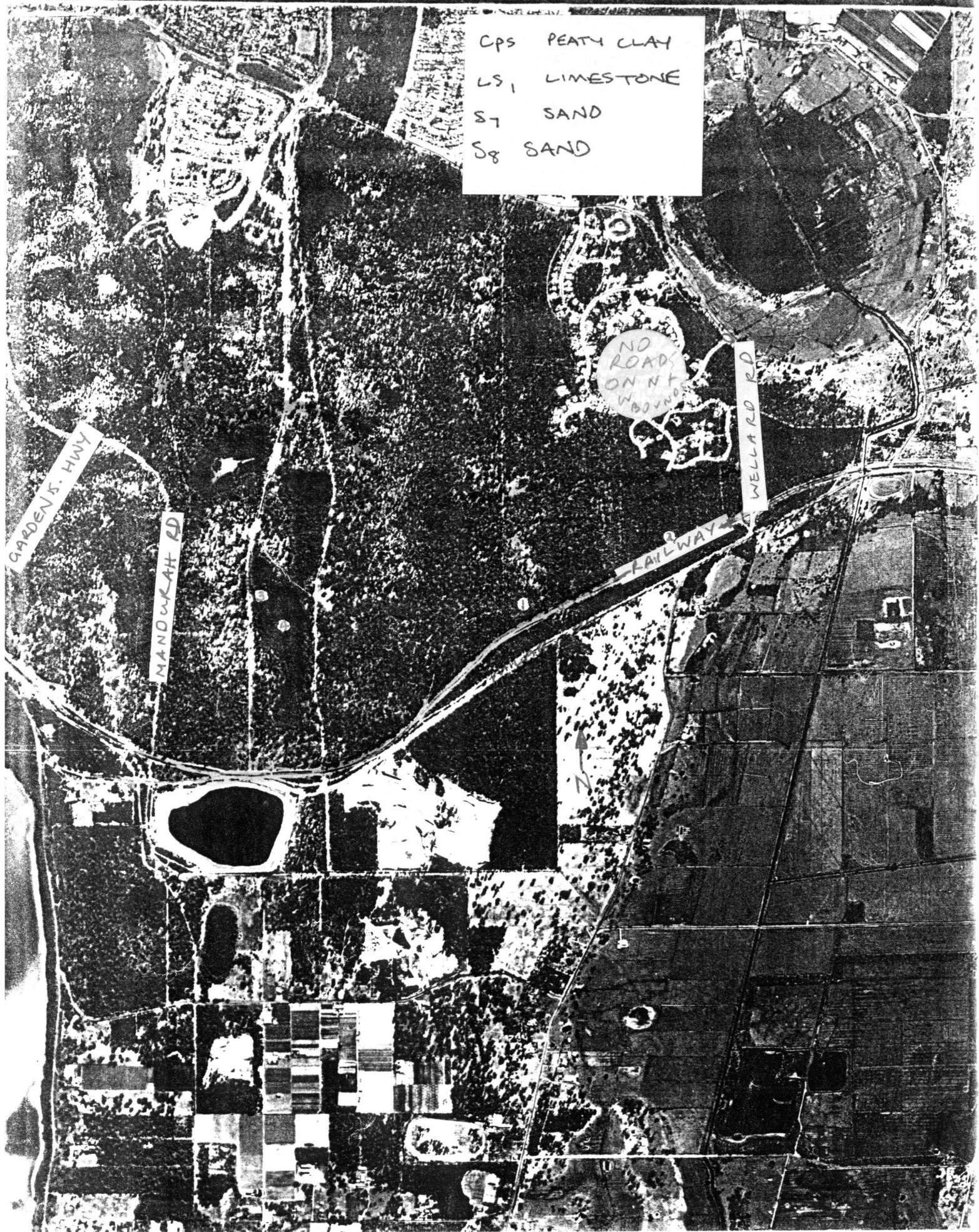
NO
ROADS
ON
N₁
WOODS

GARDEN'S HWY

MANOWAH RD

RAILWAY

WELLARD RD



2033 11 NW

M104 RESERVES C31102 & C33581, LEOA



(A)

=

Tuart ridge ^{exotic}
over mainly grasses

occ. patches shrubs, *Ac. pul*

Ac. rostr. (✓)

Base ridge road = $\Phi 1$

but no understorey.

0.65km from tp to W from Eastern track

(B) Limestone ridge (orange sand) *Mel. hueg*

Thicket over exotics and scattered

shrubs - *Dryandra sessilis*, *Ac. pul*,

Leuco. parvi.

(2km from tp on eastern track to railway south)

(C) Tuart Woodland over Velvet Grass

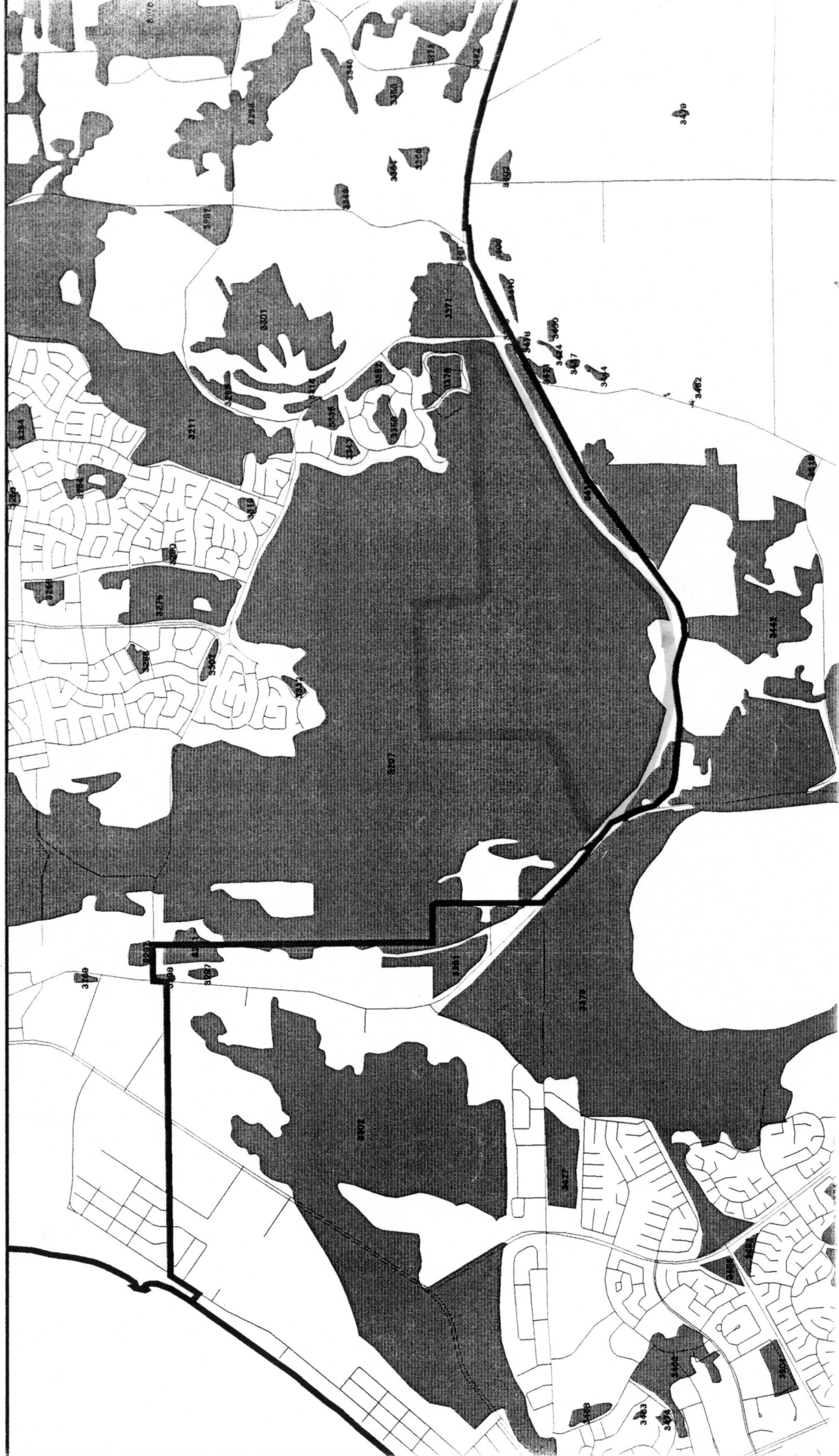
(D) =? (A)

(E) = Tuart and Mann Woodland over
Bak grandis over Velvet Grass.

(F) = Site $\Phi 1$ but completely degraded,
and no Juvok / or sparse.

(G) *Mel. raph.* as sites (3) & (4)
but *Acacia* thickets in adj Tuarts.

AZ



M104 RESERVES C31102, C33581, UEDA

Note Gas pipeline Rd

0.6 km railway to 1.7 km Bank
Woodland (sum 01) in good to
very good cond.

Ends at limestone knoll.

N Rd exit

4.6 km