

WANDENA ROAD BUSHLAND, BULLSBROOK

Boundary Definition: bushland taken to cadastre boundary

SECTION 1: LOCATION INFORMATION

Bush Forever Site no. 81 **Area (ha):** bushland 3.1

Map no. 17

Map sheet series ref. no. 2134-IV NW

Other Names: Location 112 (Keighery, BJ, and Trudgen 1992)

Local Authorities (Suburb): Shire of Swan (Bullsbrook)

SECTION 2: REGIONAL INFORMATION

LANDFORMS AND SOILS

Foothills

Colluvial Deposits (Qc: S5)

Pinjarra Plain

Guildford Formation (Qpa: Mgs1) (Qa: Ms1)

VEGETATION AND FLORA

Vegetation Complexes

Foothills

Coonambidgee Complex (Dandaragan Plateau, most southern occurrence)

Pinjarra Plain

Beermullah Complex (most northern occurrence)

Floristic Community Types: not sampled, types not inferred

Supergroup 1: Foothills/Pinjarra Plain

Supergroup 2: Seasonal Wetlands

WETLANDS

Wetland Types: palusplain, creek

Natural Wetland Groups

Dandaragan Plateau

Red Gully (Dp.1)

Swan Coastal Plain Rivers

Ellen Brook (R.3)

Wetland Management Objectives: Conservation (1.6ha), Resource Enhancement, Multiple Use

Swan Coastal Plain Lakes EPP: none identified

THREATENED ECOLOGICAL COMMUNITIES

Not determined

SECTION 3: SPECIFIC SITE DETAIL

Landscape Features: vegetated wetland, creek, vegetated uplands

Vegetation and Flora: limited survey (Keighery, BJ, and Trudgen 1992, Mattiske Consulting Pty Ltd 1997)

Structural Units

Uplands: *Eucalyptus calophylla* Woodland

Wetlands: *Melaleuca preissiana* Low Open Forest

Vegetation Condition: Very Good

Total Flora: not known

Significant Flora: Mattiske Consulting Pty Ltd 1997 — *Lambertia multiflora* (most likely *L. multiflora* var. *darlingensis* (3))

Fauna: not known

Linkage: no adjacent bushland; part of a regionally significant fragmented bushland/wetland linkage (Part A, Map 7)

Other Special Attributes: contains plant communities representative of the eastern side of the Swan Coastal Plain

SECTION 4: INTERNATIONAL AND NATIONAL SIGNIFICANCE

Not listed

SECTION 5: SELECTION CRITERIA AND RECOMMENDATIONS

Criteria: Representation of ecological communities, General criteria for the protection of wetland, streamline and estuarine fringing vegetation and coastal vegetation

Recommendation: Regional Creekline Mechanism (with mapped vegetation) (see Table 3, Volume 1).

WANDENA ROAD BUSHLAND, BULLSBROOK

Boundary Definition: bushland taken to cadastre boundary

SECTION 1: CADASTRAL INFORMATION

(Lots, locations and derived information to be updated in the public submission period)

Bushplan Site no. 81 **Map no.** 22 **Map sheet series ref. no.** 2134-IV NW

Other Names

Location 112 (Keighery, BJ, and Trudgen 1992)

Area (ha): total 3.1; bushland 3.1

Local Authorities (Suburb)

Shire of Swan (Bullsbrook)

Zoning

MRS: Rural, Other Major Highways

TPS: General Rural, Landscape

Ownership Categories

Private

Lot/Location/Reserve numbers (Purpose),

Street name

6 Great Northern Hwy; 0 street not identified

SECTION 2: REGIONAL INFORMATION

LANDFORMS AND SOILS

Foothills

Colluvial Deposits (Qc: S5)

Pinjarra Plain

Guildford Formation (Qpa: Mgs1) (Qa: Ms1)

VEGETATION AND FLORA

Vegetation Complexes

Foothills

Coonambidge Complex (Dandaragan Plateau, most southern occurrence)

Pinjarra Plain

Beermullah Complex (most northern occurrence)

Floristic Community Types: not sampled, types not inferred

Supergroup 1: Foothills/Pinjarra Plain

Supergroup 2: Seasonal Wetlands

WETLANDS

Wetland Types: palusplain, creek

Natural Wetland Groups

Dandaragan Plateau

Red Gully (Dp.1)

Swan Coastal Plain Rivers

Ellen Brook (R.3)

Wetland Management Objectives: Conservation (1.6ha), Resource Enhancement, Multiple Use

Swan Coastal Plain Lakes EPP: none identified

THREATENED ECOLOGICAL COMMUNITIES

Not determined

SECTION 3: SPECIFIC SITE DETAIL

Landscape Features: vegetated wetland, creek, vegetated uplands

Vegetation and Flora: limited survey (Keighery, BJ, and Trudgen 1992, Mattiske Consulting Pty. Ltd. 1997)

Structural Units

Uplands: *Eucalyptus calophylla* Woodland

Wetlands: *Melaleuca preissiana* Low Open Forest

Vegetation Condition: Very Good

Total Flora: not known

Significant Flora: Mattiske Consulting Pty Ltd 1997 - *Lambertia multiflora* (most likely *L. multiflora* var. *darlingensis* (3))

Fauna: no known information

Linkage: no adjacent bushland; part of a regionally significant fragmented bushland/wetland linkage (Volume 2A, Map 8)

Other Special Attributes: contains plant communities representative of the eastern side of the Swan Coastal Plain

SECTION 4: INTERNATIONAL AND NATIONAL SIGNIFICANCE

Not listed

SECTION 5: SELECTION CRITERIA AND RECOMMENDATIONS

Criteria: Representation of ecological communities, General criteria for the protection of wetland, streamline and estuarine fringing and coastal vegetation

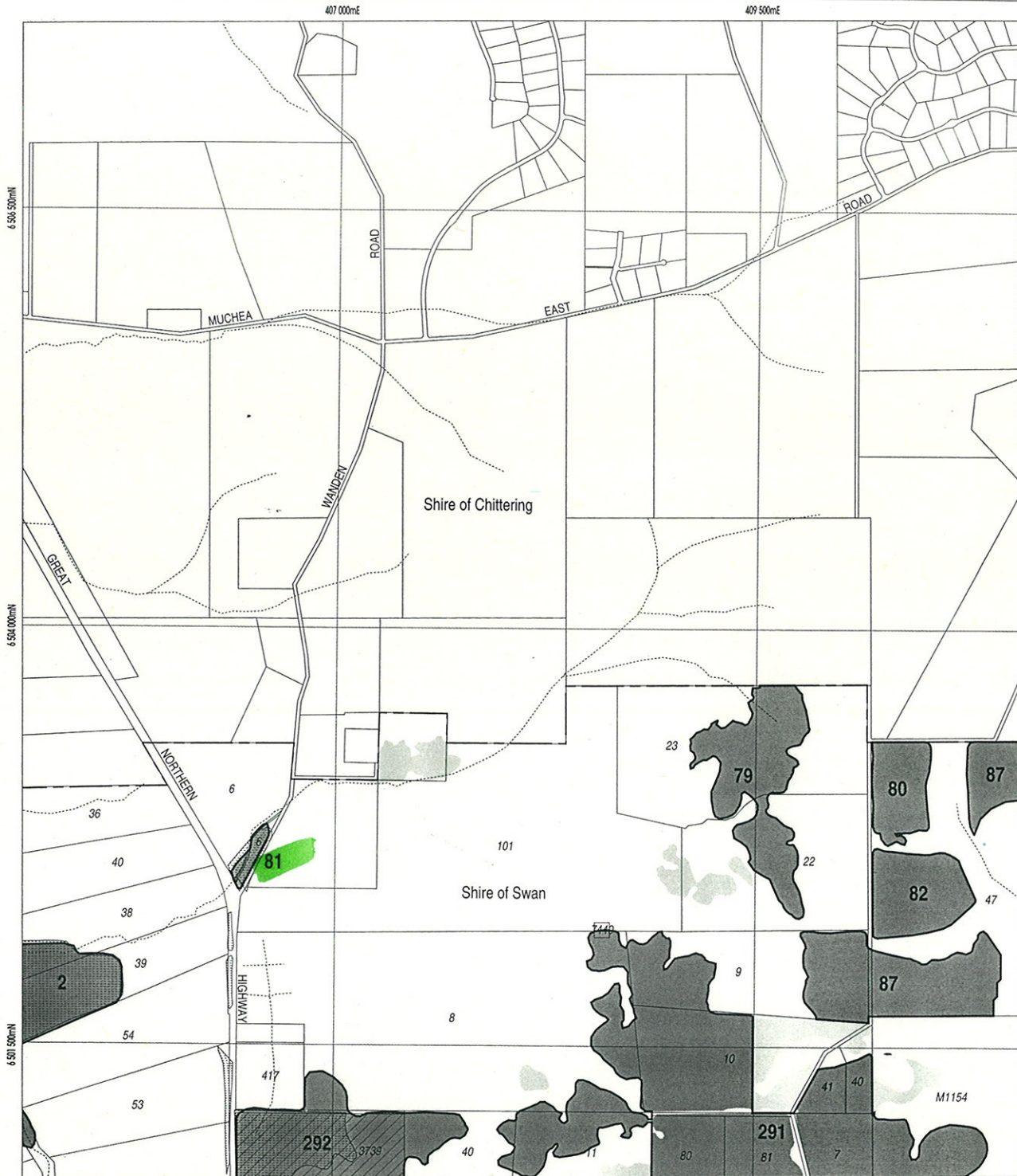
Opportunities and/or Constraints

Opportunities: Bushplan Site/part Bushplan Site subject to Swan and Canning Rivers EPP; location of conservation category wetlands; under TPS Landscape Zoning

Constraints: private land; under MRD regional road requirements

Recommendation: The most appropriate mechanism for the protection of this Bushplan Site be considered through the public comment period in consultation with the land owner(s).





LEGEND

- 472 Bushplan Sites With Regionally Significant Bushland
- Other Native Vegetation
- Conservation Category Wetlands
- Bushplan Sites With Some Existing Protection
- 696 Lot Number, Location Number
- Channel Wetlands
- Local Government Boundary

2134 - IV NW

NW	NE	/
SW	SE	
2134		
///		//

1 : 25 000 AMG Reference Grid showing Perth's Bushplan Map Sheet Breakdown

PERTH'S BUSHPLAN MAP INDEX

1	2										
3	4	5									
6	7	8	9	10	11						
12	13	14	15	16							
17	18	19	20	21	22	23					
24	25	26	27	28	29	30					
31	32	33	34	35	36						
37	38	39	40	41	42						
43	44	45	46	47	48						
49	50	51	52	53	54						
55	56	57	58	59							
60	61	62	63	64							
65	66	67	68	69	70						
71	72	73	74	75	76	77					
78	79	80	81	82	83	84					
85	86	87	88	89	90	91					
92	93	94	95	96	97						
98	99	100	101	102							
103	104	105	106								

SCALE

0 500 1000

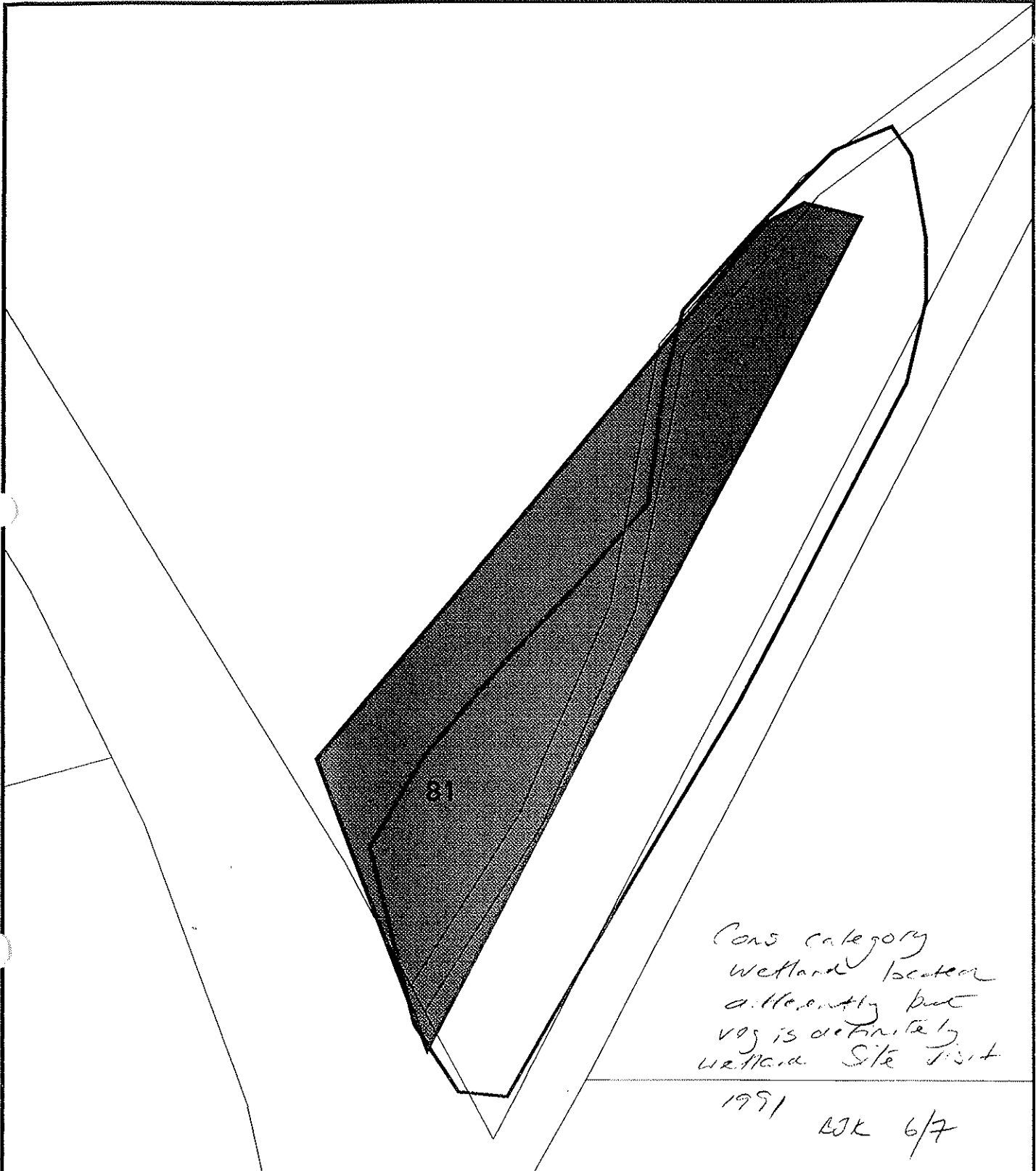
Metres

Produced by Project Mapping Section
Land Information Branch, Ministry for
Planning, Perth W.A. November 1998
ntw-map7//environ/bushplan/bushv2_22.dgn

Cadastral Data supplied by Department
of Land Administration, W.A.

Wetlands Data supplied by
Water and Rivers Commission

Native Vegetation Extent for Study Area
supplied by Agriculture Western Australia



bp site 81

Aerial image required.

MFP INTERNAL USE ONLY





Prepared By: Andrea Zappacosta

Prepared For:

Map Ident: plot980522_1

Date: 22 May 98

Scale 1:2205

-  AG VEG 1998 BOUNDARY THEME
-  Cadastre
-  Bushplan sites refno 1-500 SCP BOUNDARY THEME
-  cons category wetlands

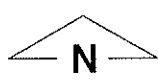
WARRANDENA ROAD BULLBROOK

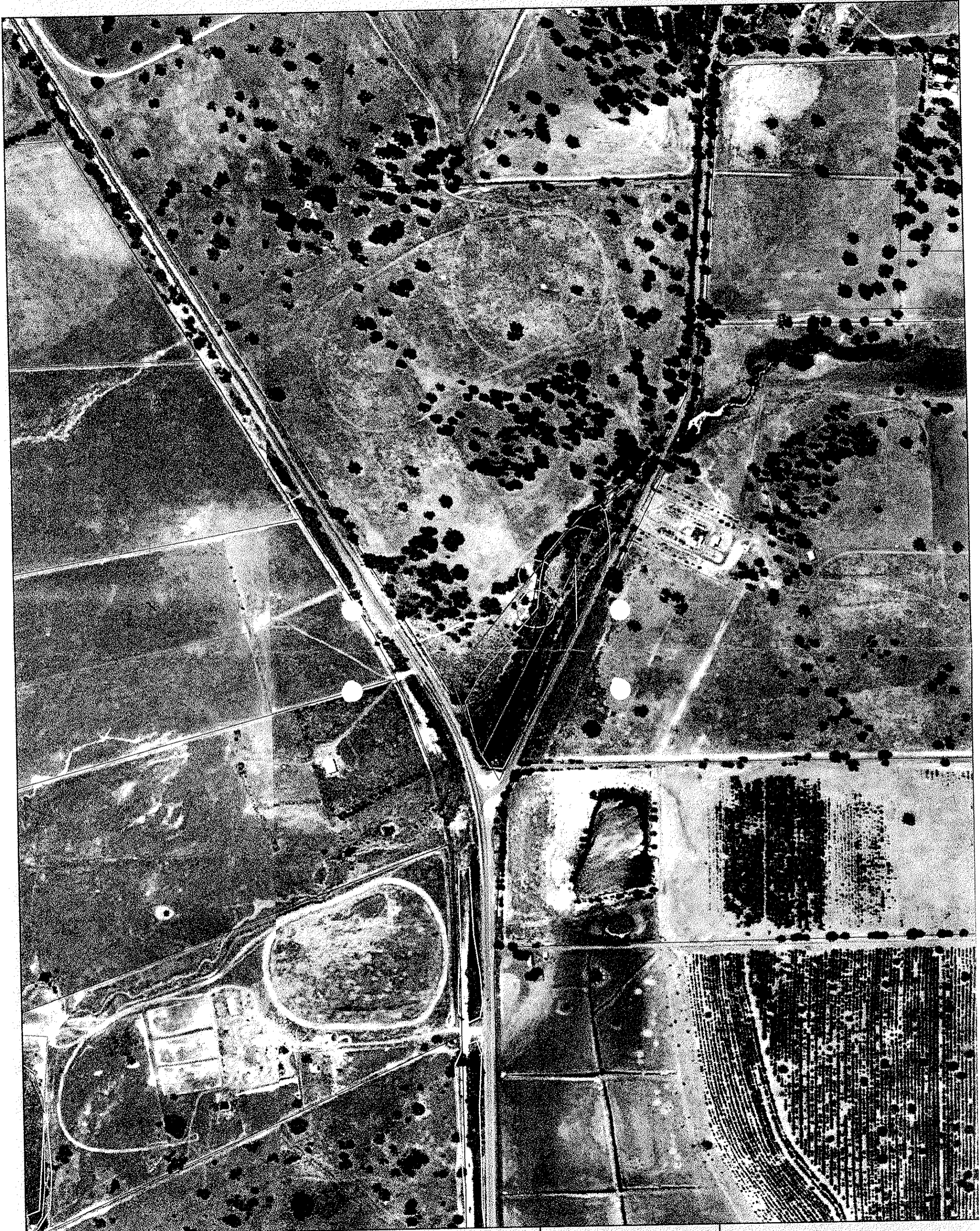
81

BUSHPLAN SITES CORRECTED



B 50/76 22/10/98

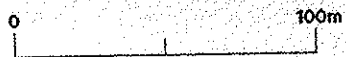




LEGEND



SCALE 1:5000



BP SITE 81

AERIAL PHOTOGRAPHY - ORTHO-RECTIFIED
ORIGINAL PHOTOGRAPHY - JANUARY 1997 SCALE 1:20000
POSITIONAL ACCURACY + or - 10 metres



PLANNING
Department of Planning and Economic Development
Ministry for Planning

