

WETHERELL ROAD BUSHLAND, LEXIA/ELLENBROOK

Boundary Definition: bushland (part taken to cadastre) boundary

SECTION 1: LOCATION INFORMATION

Bush Forever Site no. 192, 195

Area (ha): bushland 40.7

Map no. 36

Map sheet series ref. no. 2034-II NE

Other Names: part of proposed Gngangara Park

Local Authorities (Suburb): Shire of Swan (Ellenbrook)

Includes CALM Managed Land: State Forest 65

SECTION 2: REGIONAL INFORMATION

LANDFORMS AND SOILS

Bassendean Dunes

Bassendean Sands (Qpb: S8)

Bassendean Dunes/Pinjarra Plain

Bassendean Sands over Guildford Formation (Qpb/Qpa: S10)

VEGETATION AND FLORA

Vegetation Complexes

Bassendean Dunes

Bassendean Complex — Central and South

Bassendean Complex — North Transition (most southern occurrence)

Floristic Community Types: *not sampled, type inferred

Supergroup 3: Uplands centred on Bassendean Dunes and Dandaragan Plateau

*23a Central *Banksia attenuata* — *B. menziesii* woodlands

WETLANDS

No wetlands mapped

THREATENED ECOLOGICAL COMMUNITIES

Not assessed

SECTION 3: SPECIFIC SITE DETAIL

Landscape Features: vegetated uplands

Vegetation and Flora: limited survey (DEP 1998) (viewed from fenceline)

Structural Units

Uplands: *Banksia menziesii*, *B. ilicifolia*, *B. attenuata*, *Eucalyptus todtiana* Low Open Forest with emergent *E. calophylla*, *Allocasuarina fraseriana* Woodland over *Banksia ilicifolia*, *Eucalyptus todtiana*, *Nuytsia floribunda* mixed Low Open Woodland

Scattered Native Plants: not assessed

Vegetation Condition: 5% Excellent, <60% Very Good, >30% Good, with areas of severe localised disturbance

Total Flora: not known

Significant Flora: none recorded

Fauna: Significant mammal species: Quenda (Friend 1996 D)

Linkage: no adjacent native vegetation (Site 399 across road to north); part of Greenway 40 (Tingay, Alan & Associates 1998a); part of contiguous and fragmented bushland/wetland linkages (Part A, Map 7)

Other Special Attributes: included in Gngangara Park proposal (Bailey 1997)

SECTION 4: INTERNATIONAL AND NATIONAL SIGNIFICANCE

Not listed

SECTION 5: SELECTION CRITERIA AND RECOMMENDATIONS

Criteria: Representation of ecological communities, Criteria not relevant to determination of regional significance, but which may be applied when evaluating areas having similar values

Recommendation: Sites with Some Existing Protection; the existing care, control and management of these Sites is endorsed (Proposed 'Gngangara Park' - Cabinet 1996) (see Table 3, Volume 1).

WETHERELL ROAD BUSHLAND, LEXIA/ELLENBROOK

Boundary Definition: bushland (part taken to cadastre) boundary

SECTION 1: CADASTRAL INFORMATION

(Lots, locations and derived information to be updated in the public submission period)

Bushplan Site no. 192, 195 **Map no.** 40, 41 **Map sheet series ref. no.** 2034-II NE

Other Names: not known

Area (ha): total 44.3; bushland 40.7

Local Authorities (Suburb)

Zoning

Shire of Swan (Ellenbrook)

MRS: State Forests

TPS: Landscape

Ownership Categories

Lot/Location/Reserve numbers (Purpose),

State Government

Street name

65 Gngangara Rd

Crown Reserve

State Forest 65

CALM Managed Land

SECTION 2: REGIONAL INFORMATION

LANDFORMS AND SOILS

Bassendean Dunes

Bassendean Sands (Qpb: S8)

Bassendean Dunes/Pinjarra Plain

Bassendean Sands over Guildford Formation (Qpb/Qpa:S10)

VEGETATION AND FLORA

Vegetation Complexes

Bassendean Dunes

Bassendean Complex — Central and South

Bassendean Complex — North Transition (most southern occurrence)

Floristic Community Types: *not sampled, types inferred

Supergroup 3: Uplands centred on Bassendean Dunes and Dandaragan Plateau

*23a Central *Banksia attenuata* — *B. menziesii* woodlands

WETLANDS

No wetlands mapped

THREATENED ECOLOGICAL COMMUNITIES

Not assessed

SECTION 3: SPECIFIC SITE DETAIL

Landscape Features: vegetated uplands

Vegetation and Flora: limited survey (DEP 1998 viewed from fenceline)

Structural Units

Uplands: *Banksia menziesii*, *B. ilicifolia*, *B. attenuata*, *Eucalyptus todtiana* Low Open Forest with emergent *E. calophylla*; *Allocasuarina fraseriana* Woodland over *Banksia ilicifolia*, *Eucalyptus todtiana*, *Nuytsia floribunda* mixed Low Open Woodland

Scattered Native Plants: not assessed

Vegetation Condition: 5% Excellent, <60% Very Good, >30% Good, with areas of severe localised disturbance

Total Flora: not known

Significant Flora: none recorded

Fauna: no systematic survey. Significant mammal species: Quenda (Friend 1996 D)

Linkage: no adjacent native vegetation (BS399 across road to north); part of proposed Greenways 22, 14 (Tingay, Alan & Associates 1997a); part of contiguous and fragmented bushland/wetland linkages (Volume 2A, Map 8)

Other Special Attributes: included in Gngangara Park proposal (Bailey 1997)

SECTION 4: INTERNATIONAL AND NATIONAL SIGNIFICANCE

Not listed

SECTION 5: SELECTION CRITERIA AND RECOMMENDATIONS

Criteria: Representation of ecological communities, Criteria not relevant to determination of conservation value, but which may be applied when evaluating areas having similar values

Opportunities and/or Constraints

Opportunities: Bushplan Site/part Bushplan Site subject to Swan and Canning Rivers EPP, Gngangara Mound Crown Land EPP; under TPS Landscape Zoning, Crown Reserve

Constraints: under Priority and General Mineral Resource Area (sand), mining tenement M70/238 (Rocla Ltd) for sand and silica



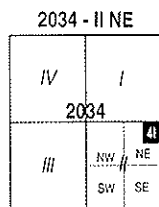
Recommendation: The existing care, control and management of this Bushplan Site is endorsed. This site lies within the proposed 'Gnangara Park' (concept announced by Cabinet in 1996) within which areas of remnant native vegetation, such as this Bushplan Site, should be managed in the future to retain and enhance their conservation values.



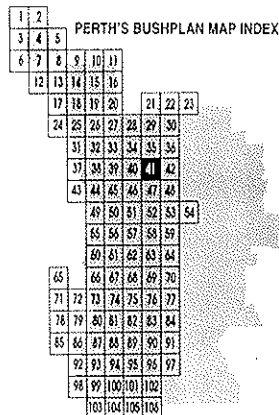


LEGEND

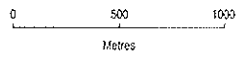
- Bushplan Sites With Regionally Significant Bushland
- Other Native Vegetation
- Conservation Category Wetlands
- Bushplan Sites With Some Existing Protection
- Lot Number, Location Number
- Channel Wetlands
- Local Government Boundary



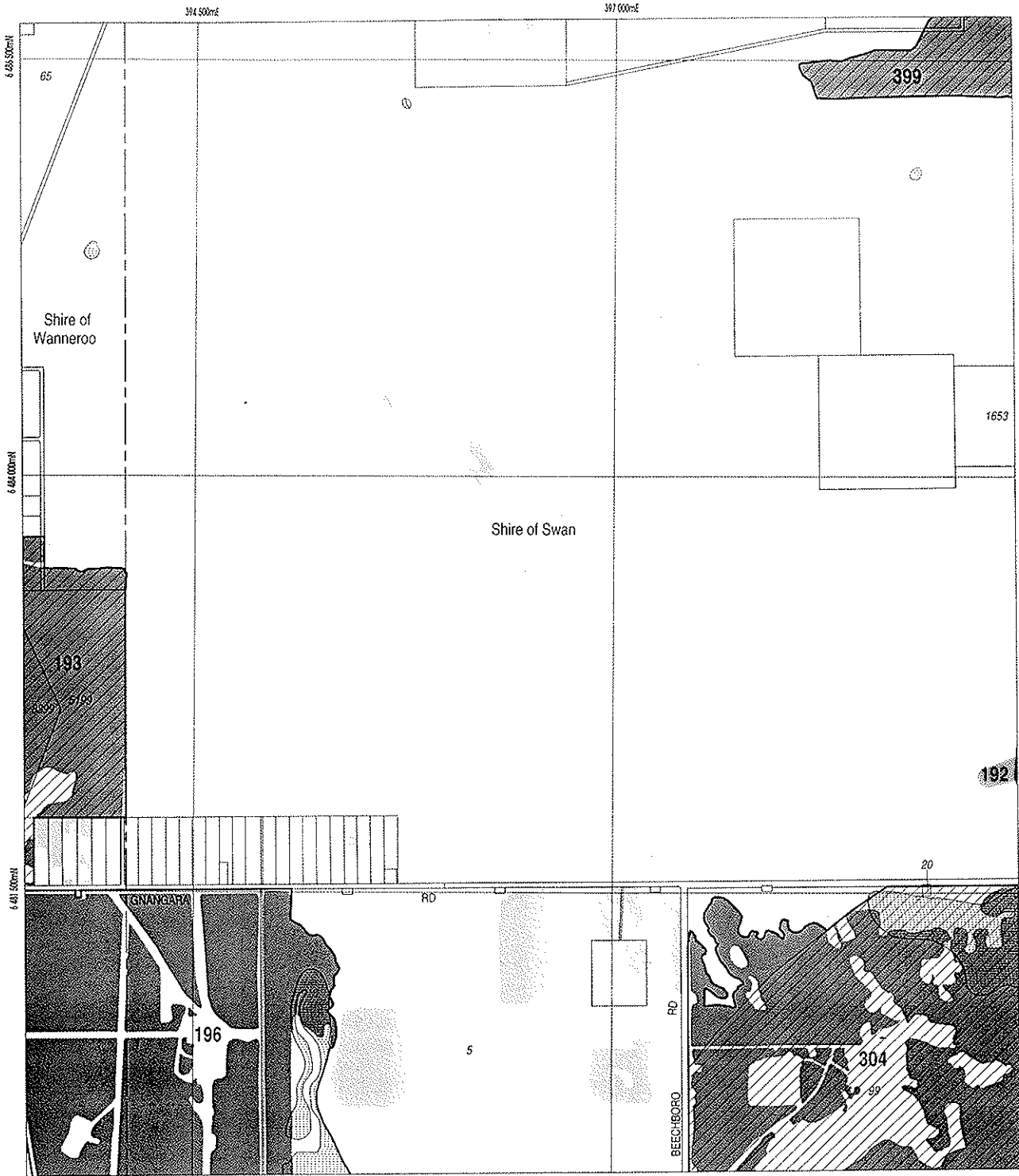
1: 25 000 AMG Reference Grid showing Perth's Bushplan Map Sheet Breakdown



SCALE

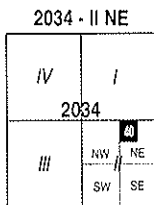


Produced by Project Mapping Section
Land Information Branch, Ministry for
Planning, Perth W.A. November 1998
ntw-map11/environ/bushplan/bushv2_41.dgn
Cadastral Data supplied by Department
of Land Administration, W.A.
Wetlands Data supplied by
Water and Rivers Commission
Native Vegetation Extent for Study Area
supplied by Agriculture Western Australia

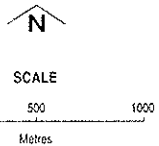
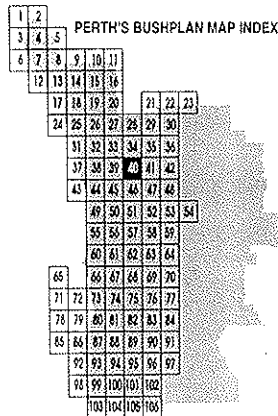


LEGEND

-  472 Bushplan Sites With Regionally Significant Bushland
-  Other Native Vegetation
-  Conservation Category Wetlands
-  Bushplan Sites With Some Existing Protection
-  Lot Number, Location Number
-  Channel Wetlands
-  Local Government Boundary



1 : 25 000 AMG Reference Grid showing Perth's Bushplan Map Sheet Breakdown



Produced by Project Mapping Section
Land Information Branch, Ministry for
Planning, Perth W.A. November 1998
ntw-map11/environ/bushplan/bushw2_40.dgn

Cadastral Data supplied by Department
of Land Administration, W.A.

Wetlands Data supplied by
Water and Rivers Commission

Native Vegetation Extent for Study Area
supplied by Agriculture Western Australia

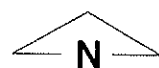
192

195

BUSHPLAN SITES CORRECTED



WESTERN
AUSTRALIAN
PLANNING
COMMISSION



399

66

195

no: *diagram*

192

bp site 192 & 195

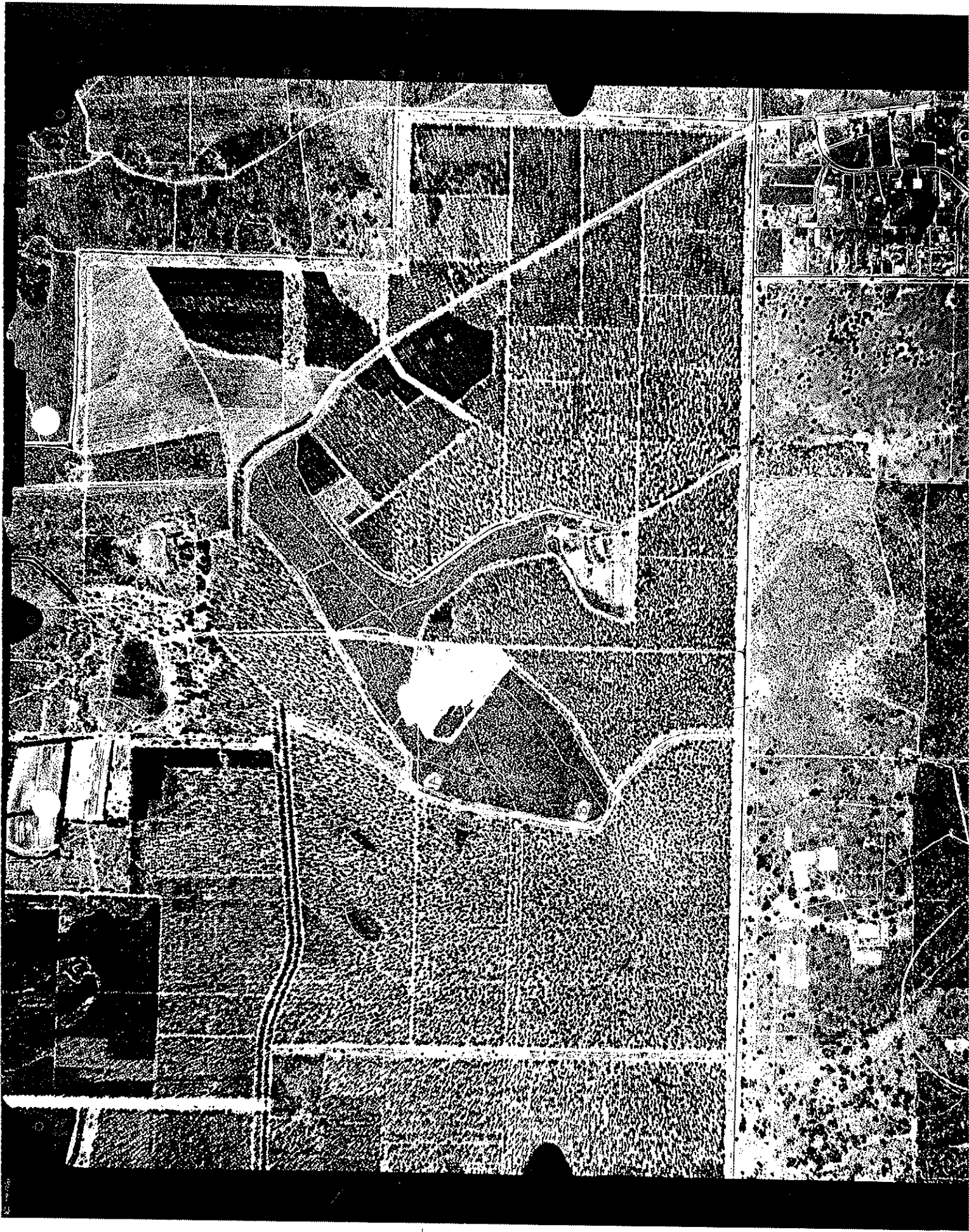
- AG VEG 1998 BOUNDARY THEME
- Cadastre
- Bushplan sites refno 1-500 SCP BOUNDARY THEME

MFP INTERNAL USE ONLY
 Prepared By: Andrea Zappacosta
 Prepared For:
 Map Idnt: plot980528_1
 Date: 26 May 98
 Scale 1:9470

BJK 15/7
 192 - This area has been mined, see photo - exclude
 195 State Forest / pines insert

4E193

12/19/75



All area cleared

A



1997 x150%

UPDATED SHEETS

BUSHLAND AREA B192/195 SITES YES NO

DATE 6.5.98 RECORDERS Natalie + (Drew)

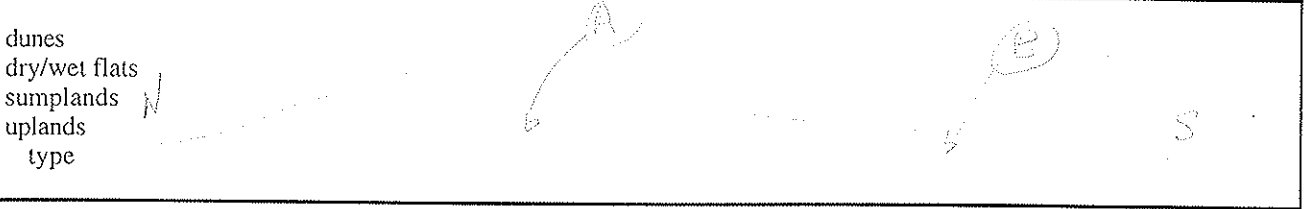
GASKEL AVENUE

Observations edge transects

Geographic Location Latitude S Longitude E
Reference Map

Photograph Photographer's Name Photo No 24 25

Transect of landscape units (draw in transect incorporating features listed and any other relevant unit)



Soil - surface light grey sub -soil brown
Exposed rock type % area

FLORA/VEGETATION (list dominant and significant plants below, see over for vege association descriptions)

Eucalypts	<u>E. calophylla</u>	<u>E. wandoo</u>	<u>E. marginata</u>	<u>E. todtiana</u>	<u>E. rudis</u>
	<u>E. decipiens</u>	<u>E. drummondii</u>	<u>E. haematoxylon</u>	<u>E. lanepolei</u>	<u>E. gomphocephala</u>
	<u>E. accedens</u>	<u>E. patens</u>	<u>E. laeliae</u>	<u>E. megacarpa</u>	
Sheoaks	<u>Allocasuarina fraserana</u>		<u>Casuarina obesa</u>		
Banksia	<u>B. attenuata</u>	<u>B. menziesii</u>	<u>B. prionotes</u>	<u>B. illicifolia</u>	<u>B. grandis</u> <u>B. littoralis</u>
Melaleuca	<u>M. preissii</u>	<u>M. raphiophylla</u>	<u>M. lanceolata</u>	<u>M. cuticularis</u>	
Others	<u>Callitris preissii</u>				
Mallees	<u>Eucalypts</u>	<u>E. argutifolia</u>	<u>E. petrensis</u>	<u>E. decurva</u>	<u>E. foecunda</u> <u>E. latens</u>
SIGNIFICANT SPECIES					
(see over for vegetaion descriptions)					

Vegetation Condition - Keighery 1994 (Trudgen 1993) (show range and indicate predominant class)

- 1 = 'Pristine' (Excellent)
- 2 = Excellent (Very Good)
- 3 = Very Good (Good) (A) = VG - G (B) = VG - G
- 4 = Good (Poor) (A) = VG - G (B) = VG - G
- 5 = Degraded (Very Poor)
- 6 = Completely Degraded

Specific aspects of disturbance

partial clearing

weeds (list):

selective removal of species: timber cutting mowing fire grazing dieback %area

fire frequency:

'enrichment plantings' (list)

animal impact: horse foxes rabbits cats dogs goats pigs overgrazing by native mammals

soil movement: mining dumping rubbish dumping roadworks

changes in water regimes: flooding drainage watering nutrient influx

Tracks: fire breaks waik trails off road vehicle use animal tracks

Service corridors: SEC Main Roads Water Authority. Telecom

Other

?? CONNECTED TO CHANGING AREA
 SAND MINE EXPANDED TO
 SOUTH WEST - VISIBL FROM
 - CHECK REEFER RECORDS

LIFE FORM/HEIGHT CLASS	CANOPY COVER			
	DENSE 70-100%	MID-DENSE 30-70%	SPARSE 10-30%	VERY SPARSE 2-10%
Trees >30m Trees 15-30m Trees 5-15m Trees <5m	Dense Tall Forest Dense Forest Dense Low Forest A Dense Low Forest B	Tall Forest Forest Low Forest A Low Forest B	Tall Woodland Woodland Low Woodland A Low Woodland B	Open Tall Woodland Open Woodland Open Low Woodland A Open Low Woodland B
Mallee tree form Mallee shrub form	Dense Tree Mallee Dense Shrub Mallee	Tree Mallee Shrub Mallee	Open Tree Mallee Open Shrub Mallee	Very Open Tree Mallee Very Open Shrub Mallee
Shrubs >2m Shrubs 1.5-2.0m Shrubs 1.0-1.5m Shrubs 0.5-1.0m Shrubs 0.0-0.5m	Dense Thicket Dense Heath A Dense Heath B Dense Low Heath C Dense Low Heath D	Thicket Heath A Heath B Low Heath C Low Heath D	Scrub Low Scrub A Low Scrub B Dwarf Scrub C Dwarf Scrub D	Open Scrub Open Low Scrub A Open Low Scrub B Open Dwarf Scrub C Open Dwarf Scrub D
Mat plants Hummock Grass Bunch grass >0.5m Bunch grass <0.5m Herbaceous spp.	Dense Mat Plants Dense Hummock Grass Dense Tall Grass Dense Low Grass Dense Herbs	Mat Plants Mid-Dense Hummock Grass Tall Grass Low Grass Herbs	Open Mat Plants Hummock Grass Open Tall Grass Open Low Grass Open Herbs	Very Open Mat Plants Open Hummock Grass Very Open Tall Grass Very Open Low Grass Very Open Herbs
Sedges >0.5m Sedges <0.5m	Dense Tall Sedges Dense Low Sedges	Tall Sedges Low Sedges	Open Tall Sedges Open Low Sedges	Very Open Tall Sedges Very Open Low Sedges
Ferns Mosses, liverwort	Dense Ferns Dense Mosses	Ferns Mosses	Open Ferns Open Mosses	Very Open Ferns Very Open Mosses

VEGETATION (describe each unit of vegetation using dominants and life form/height class and canopy cover according to the Muir codes above)

(A)	Eucalyptus caloph 15-20m 2%	
	Bilby 10-15m	Lacey old example
	Ba	
	Euc. tottriana 12m	35%
	Bm 15m	
	Mammz. 1-1.5	
	Yp 1.5	
	Synellia	
	G. calchodibium	G. tomentosum
	Ml. acmisa 0.8-1.1	
	Scholtia inducenda 0.2-0.6	
	Calyp. flavovens	
	redid. antbellia	
	Prognod. occidentalia	
	Lynnia hirtula 15m 5% (edges to 15%)	
	Dactyloctenium	
(B)	Allo. las. 15m 15%	
	Bilby 8-10	
	Wf 8-10	10%
	Euc. tottriana 10m	
		Allo. humilis
		Isobry. linearis
		Ericaceae
	on edge - Adiantum	
		Allo. hirta
	Jacksonia buffed	
	Lynnia hirtula	Ally grey - 10m 30%
Fauna	comments	
	Metallura ocella 1-1.5 10%	
	Synellia tenuifolia	
	Prognod. gracil	scopula
Adjacent bushland	(refer to aerial photograph)	calyp

