

CANNING AND SOUTHERN RIVERS, BECKENHAM TO MARTIN/KELMSCOTT

Boundary Definition: protected area boundary

SECTION 1: LOCATION INFORMATION

Bush Forever Site no. 246

Area (ha): bushland 181.1

Map no. 54, 55, 61

Map sheet series ref. no. 2033–I NE, 2133–IV NW

Other Names: not known

Local Authorities (Suburb): City of Gosnells (Gosnells, Southern River, Huntingdale, Thornlie, Maddington, Beckenham, Kenwick, Martin), City of Armadale (Kelmscott)

System 6 (1983): Part M75 area of bushland goes beyond System area boundaries, all bushland described

SECTION 2: REGIONAL INFORMATION

LANDFORMS AND SOILS

Foothills

Colluvial Deposits (Qc: Csg)

Yoganup Formation (Qpr: S12)

Pinjarra Plain

Guildford Formation (Qpa: Cs) (Qha: Cms, Msc1, Ms4)

Alluvial/Colluvial Deposits (Qha/Qc: G1/FS3) (Qa: FS1)

Bassendean Dunes

Bassendean Sands (Qpb: S8)

Bassendean Dunes/Pinjarra Plain

Bassendean Sands over Guildford Formation (Qpb/Qpa: S10)

VEGETATION AND FLORA

Vegetation Complex

Foothills

Forrestfield Complex (Ridge Hill Shelf, Darling Plateau)

Pinjarra Plain

Guildford Complex

Swan Complex

Combinations of Bassendean Dunes/Pinjarra Plain/Spearwood Dunes

Southern River Complex

Floristic Community Types: not sampled, types not inferred

WETLANDS

Wetland Types: dampland, floodplain, palusplain, river, creek, artificial channel

Natural Wetland Groups

Bassendean—Pinjarra transition OR Bassendean with fluvial features

Bennet Brook (B/P.4)

Swan Coastal Plain Rivers

Swan River (R.2)

Wetland Management Objectives: Conservation (149.2ha, 215m), Resource Enhancement

Swan Coastal Plain Lakes EPP: none identified

THREATENED ECOLOGICAL COMMUNITIES

Not determined

SECTION 3: SPECIFIC SITE DETAIL

Landscape Features: vegetated wetland, creek, river, vegetated uplands

Vegetation and Flora: limited survey (Connell 1995, Main Roads 1993, Payne 1993b, Pen 1983, 1993)

Structural Units: mapping (Pen 1983, 1993)

Uplands: Low Open Forest dominated by *Banksia attenuata*, *B. menziesii*, *B. ilicifolia*, *Allocasuarina fraseriana*, *Eucalyptus totiana* and combinations of these

Wetlands (wetflats): *Eucalyptus rudis* and *Melaleuca rhapsiophylla* Open to Closed Forest over *Astartea fascicularis* and *Grevillea diversifolia*; *Eucalyptus calophylla* Open to Closed Forest; *Eucalyptus rudis* and *E calophylla* Open to Closed Forest

Scattered Native Plants: *Eucalyptus rudis* Open Woodland to Woodland, *Eucalyptus calophylla* Open Woodland to Woodland — regionally significant vegetation recognised as being included in the area of Site in need of protection

Vegetation Condition: varies from patches in Excellent Condition to Completely Degraded

Total Flora: not known

Significant Flora: none recorded

Fauna: Significant mammal species: Quenda (Friend 1996 D)

Linkage: adjacent bushland/canopy to Site 61 in the east and along the Southern River to Sites 464 and 255 in the south; part of Greenways 70, 71, 73, 106 (Tingay, Alan & Associates 1998a); part of a regionally significant contiguous bushland/wetland linkage (Part A, Map 7)

Other Special Attributes: National Trust of Australia (WA) Classification; bushland/naturally vegetated watercourses have particular conservation value in providing habitat for fauna and linkage between larger, more intact areas of bushland; contains open space of regional significance (DCE 1983); contains 1963m of regionally significant river (WRC 1996a GIS)

SECTION 4: INTERNATIONAL AND NATIONAL SIGNIFICANCE

Not listed

SECTION 5: SELECTION CRITERIA AND RECOMMENDATIONS

Criteria: Representation of ecological communities, Rarity, General criteria for the protection of wetland, streamline and estuarine fringing vegetation and coastal vegetation, Criteria not relevant to determination of regional significance, but which may be applied when evaluating areas having similar values

Recommendation: Part A: Site with Some Existing Protection; existing Parks and Recreation Reserve. Part B: Regional Creekline Mechanism (with mapped vegetation) (see Table 3, Volume 1).

CANNING AND SOUTHERN RIVERS, BECKENHAM TO MARTIN/KELMSCOTT

Boundary Definition: protected area boundary

SECTION 1: CADASTRAL INFORMATION

(Lots, locations and derived information to be updated in the public submission period)

Bushplan Site no. 246 **Map no.** 63, 69, 70 **Map sheet series ref. no.** 2033-I NE, 2133-IV NW
System 6 (1983): Part M75 area of bushland goes beyond System area boundaries, all bushland described

Other Names: not known

Area (ha): total 350.4; bushland 181.1

Local Authorities (Suburb)

City of Gosnells (Gosnells, Southern River, Huntingdale,
 Thornlie, Maddington, Beckenham, Kenwick, Martin),
 City of Armadale (Kelmescott)

Zoning

MRS: Urban, Rural, Waterways, Parks and Recreation,
 Railways, Controlled Access Highways, Other Major
 Highways, Important Regional Roads, Public Purposes-
 Technical School

TPS: Deferred Urban, Landscape, Parks and Recreation,
 Public Purposes, Residential, Residential A, Residential
 B, Rural, Special Site, Special Use, Water Courses

Ownership Categories

State Government, Local Government, Private (including
 commercial organisation)

Lot/Location/Reserve numbers (Purpose),

Street name

(Riverine and creekline lots not identified)

Crown Reserve

SECTION 2: REGIONAL INFORMATION

LANDFORMS AND SOILS

Foothills

Colluvial Deposits (Qc: Csg)

Yoganup Formation (Qpr: S12)

Pinjarra Plain

Guildford Formation (Qpa: Cs) (Qha: Cms, Msc1, Ms4)

Alluvial/Colluvial Deposits (Qha/Qc: G1/FS3) (Qa: FS1)

Bassendean Dunes

Bassendean Sands (Qpb: S8)

Bassendean Dunes/Pinjarra Plain

Bassendean Sands over Guildford Formation (Qpb/Qpa: S10)

VEGETATION AND FLORA

Vegetation Complex

Foothills

Forrestfield Complex (Ridge Hill Shelf, Darling Plateau)

Pinjarra Plain

Guildford Complex

Swan Complex

Combinations of Bassendean Dunes/Pinjarra Plain/Spearwood Dunes

Southern River Complex

Floristic Community Types: not sampled, types not inferred.

WETLANDS

Wetland Types: dampland, floodplain, palusplain, river, creek, artificial channel

Natural Wetland Groups

Bassendean—Pinjarra transition OR Bassendean with fluvial features

Bennet Brook (B/P.4)

Swan Coastal Plain Rivers

Swan River (R.2)

Wetland Management Objectives: Conservation (149.2ha, 215m), Resource Enhancement

Swan Coastal Plain Lakes EPP: none identified

THREATENED ECOLOGICAL COMMUNITIES

Not determined

SECTION 3: SPECIFIC SITE DETAIL

Landscape Features: vegetated wetland, creek, river, vegetated uplands

Vegetation and Flora: limited survey (Connell 1995, Main Roads 1993, Payne 1993b, Pen 1983, 1993)

Structural Units: mapping (Pen 1983, 1993)

Uplands: Low Open Forest dominated by *Banksia attenuata*, *B. menziesii*, *B. ilicifolia*, *Allocasuarina fraseriana*,
Eucalyptus tottiana and combinations of these

Wetlands (wetflats): *Eucalyptus rudis* and *Melaleuca rhapsiophylla* Open to Closed Forest over *Astartea fascicularis* and *Grevillea diversifolia*; *Eucalyptus calophylla* Open to Closed Forest; *Eucalyptus rudis* and *E calophylla* Open to Closed Forest



Scattered Native Plants: *Eucalyptus rudis* Open Woodland to Woodland, *Eucalyptus calophylla* Open Woodland to Woodland — regionally significant vegetation recognised as being included in the area of Bushplan Site in need of protection

Vegetation Condition: varies from patches in Excellent Condition to Completely Degraded

Total Flora: not known

Significant Flora: none recorded

Fauna: no systematic survey. Significant mammal species: Quenda (Friend 1996 D)

Linkage: adjacent bushland/canopy to the east (BS61); part of proposed Greenway 86, 87 (Tingay, Alan & Associates 1997a); part of a regionally significant contiguous bushland/wetland linkage (Volume 2A, Map 8)

Other Special Attributes: National Trust of Australia (WA) Classification; bushland/naturally vegetated watercourses have particular conservation value in providing habitat for fauna and linkage between larger, more intact areas of bushland; contains open space of regional significance (DCE 1983); contains 1963m of regionally significant river (WRC 1996a GIS)

SECTION 4: INTERNATIONAL AND NATIONAL SIGNIFICANCE

Not listed

SECTION 5: SELECTION CRITERIA AND RECOMMENDATIONS

Criteria: Representation of ecological communities, Rarity, General criteria for the protection of wetland, streamline and estuarine fringing and coastal vegetation, Criteria not relevant to determination of conservation value, but which may be applied when evaluating areas having similar values

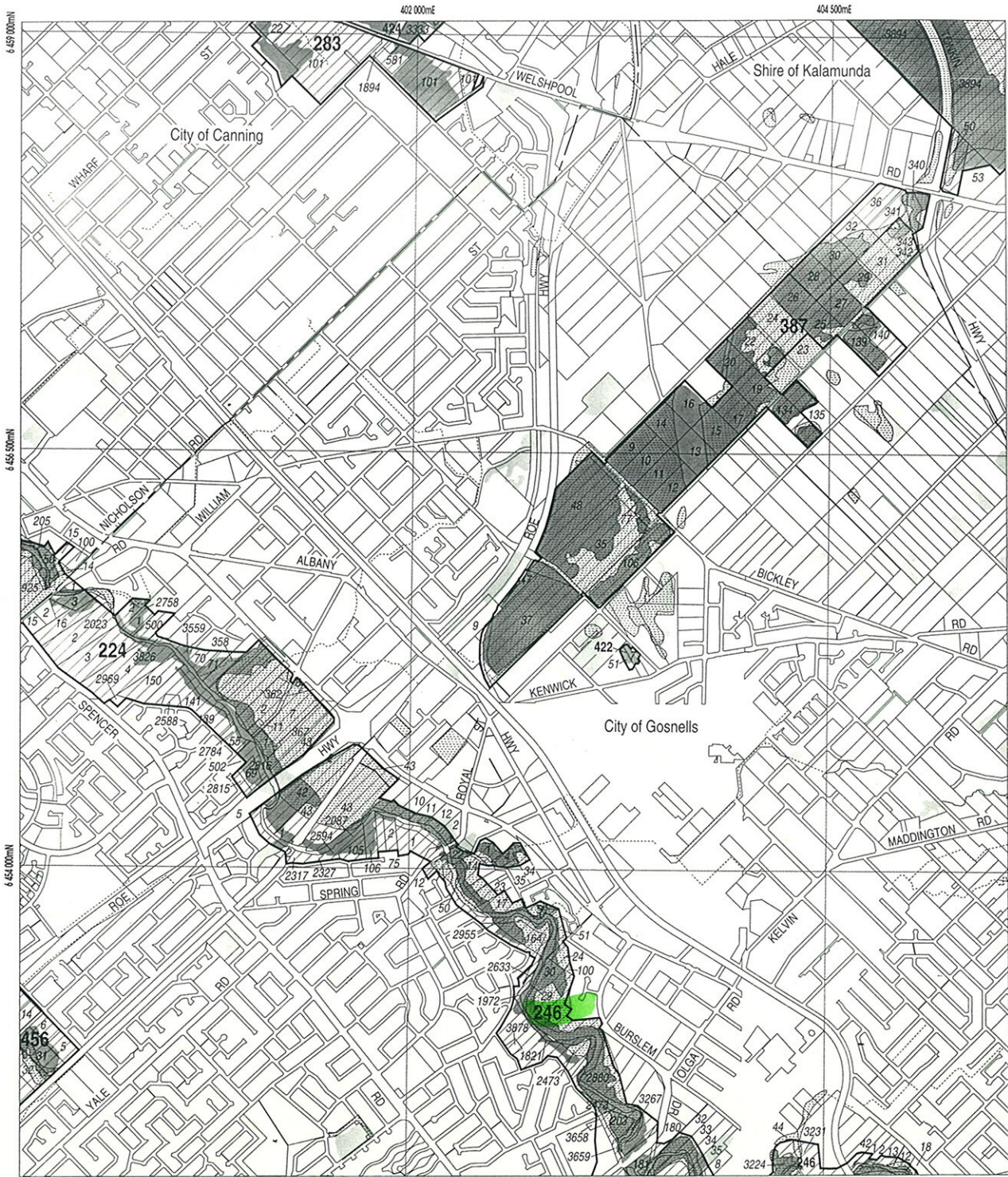
Opportunities and/or Constraints

Opportunities: Bushplan Site/part Bushplan Site subject to Swan and Canning Rivers EPP; location of conservation category wetlands; under MRS Parks and Recreation Reservation and TPS Landscape Zoning and Parks and Recreation Zoning, Crown Reserve

Constraints: private land; under MRS Urban Zoning, MRD regional road requirements

Recommendation: The most appropriate mechanism for the protection of this Bushplan Site be considered through the public comment period in consultation with the land owner(s). This may include parts for which: The existing care, control and management intent of the reserve is endorsed. Long-term security and support for conservation management of the Bushplan Site be enhanced by: amending the purpose of the reserve to include conservation; and applying appropriate mechanisms in consultation with the reserve management body.





LEGEND

- 472 Bushplan Sites With Regionally Significant Bushland
- Other Native Vegetation
- Conservation Category Wetlands
- Bushplan Sites With Some Existing Protection
- 696 Lot Number, Location Number
- Channel Wetlands
- Local Government Boundary

2033 - I NE

IV	NW	NE	63
2033			
III	SW	SE	II

1 : 25 000 AMG Reference Grid showing Perth's Bushplan Map Sheet Breakdown

PERTH'S BUSHPLAN MAP INDEX

1	2										
3	4	5									
6	7	8	9	10	11						
12	13	14	15	16							
17	18	19	20	21	22	23					
24	25	26	27	28	29	30					
31	32	33	34	35	36						
37	38	39	40	41	42						
43	44	45	46	47	48						
49	50	51	52	53	54						
55	56	57	58	59							
60	61	62	63	64							
65	66	67	68	69	70						
71	72	73	74	75	76	77					
78	79	80	81	82	83	84					
85	86	87	88	89	90	91					
92	93	94	95	96	97						
98	99	100	101	102							
103	104	105	106								

N

SCALE

0 500 1000

Metres

Produced by Project Mapping Section
Land Information Branch, Ministry for
Planning, Perth W.A. November 1998
ntw-map/environ/bushplan/bushvol2_63.dgn
Cadastral Data supplied by Department
of Land Administration, W.A.
Wetlands Data supplied by
Water and Rivers Commission
Native Vegetation Extent for Study Area
supplied by Agriculture Western Australia

Bushplan Site 246 Site inspection for Metro Region Scheme Railway

September 2000

From point of divergence from Roe Highway in Lot 43.

The existing railway ramp travels through virtually cleared paddocks. This corresponds to the stippled and clear areas on either side of the railway on Bushplan Site Map 63 (Perth's Bushplan, December 1998). The main species in this area were the weeds:

Buffalo grass – *Stenotaphrum secundatum*

Brome grass - *Bromus* sp

Wild oats - *Avena fatua*

Paterson's curse - *Echium plantagineum*

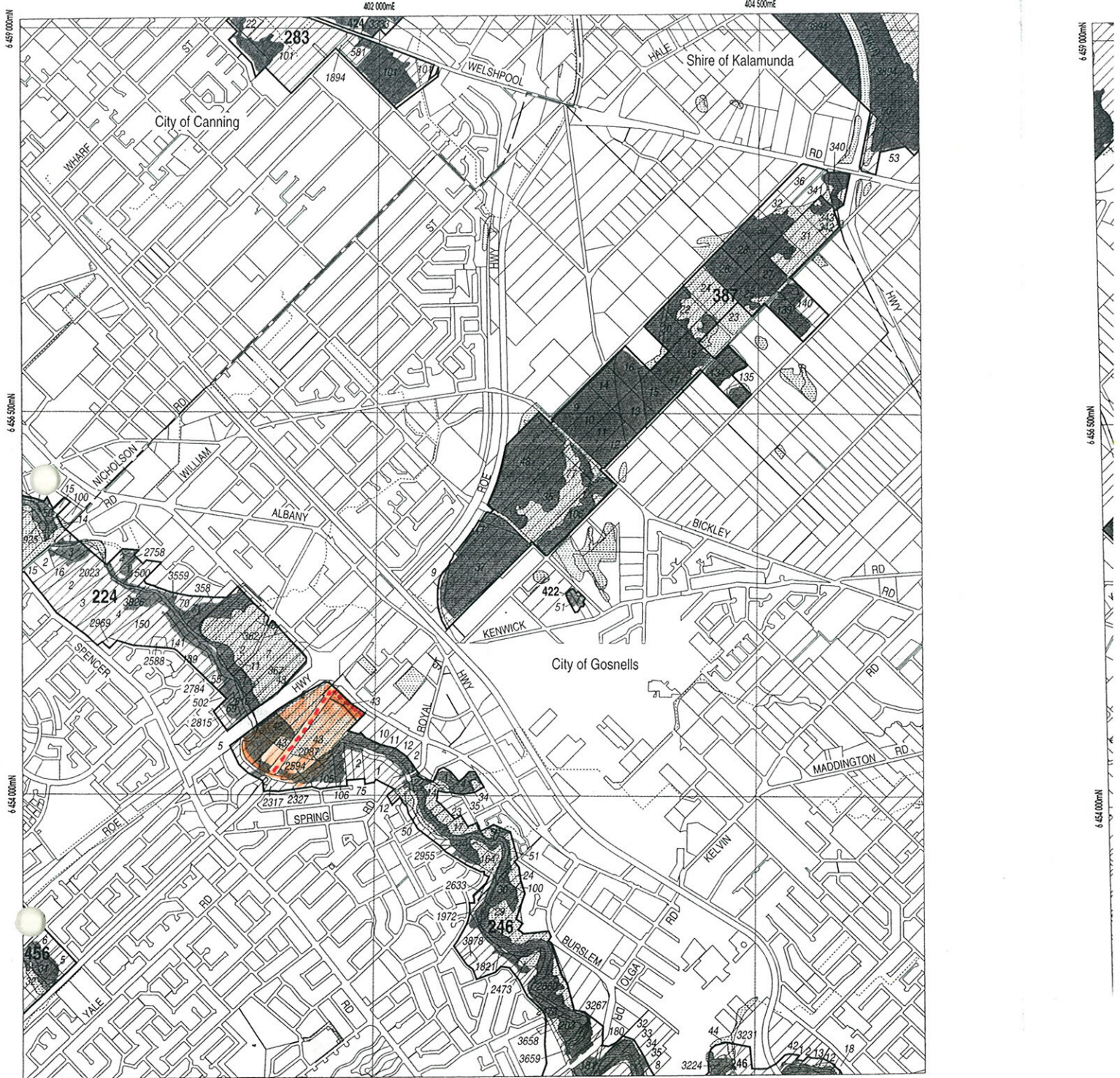
Castor oil - *Ricinus communis*

Panic grass - *Panicum effusum*

Common vetch(pea) – *Vicia sativa*

"Clovers" - *Medicago* species

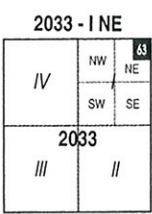
The grey area on the map which is further from the river is mainly scattered *Eucalyptus rudis* on the wider embankment/floodplain with heavy soils. Immediately along the river bank more continuous cover of *E. rudis* and *Melaleuca preissiana* still exists. Some individual trees on the bank will be affected by the widening of the ramp for the light passenger rail adjacent to the heavy rail.



LEGEND

-  Bushplan Sites With Regionally Significant Bushland
-  Other Native Vegetation
-  Conservation Category Wetlands
-  Bushplan Sites With Some Existing Protection
-  Lot Number, Location Number
-  Channel Wetlands
-  Local Government Boundary

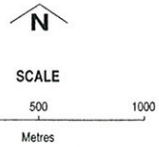
--- walked
Sept 2000
visible



1 : 25 000 AMG Reference Grid showing Perth's Bushplan Map Sheet Breakdown

PERTH'S BUSHPLAN MAP INDEX

1	2
3	4
5	6
7	8
9	10
11	12
13	14
15	16
17	18
19	20
21	22
23	24
25	26
27	28
29	30
31	32
33	34
35	36
37	38
39	40
41	42
43	44
45	46
47	48
49	50
51	52
53	54
55	56
57	58
59	60
61	62
63	64
65	66
67	68
69	70
71	72
73	74
75	76
77	78
79	80
81	82
83	84
85	86
87	88
89	90
91	92
93	94
95	96
97	98
99	100
101	102
103	104
105	106



Produced by Project Mapping Section
Land Information Branch, Ministry for
Planning, Perth W.A. November 1998
ntw-map/enviro/bushplan/bushvol2_63.dgn
Cadastral Data supplied by Department
of Land Administration, W.A.
Wetlands Data supplied by
Water and Rivers Commission
Native Vegetation Extent for Study Area
supplied by Agriculture Western Australia

BS 246 Rivers

192/813

951740

REC 95139

PUBLIC ENVIRONMENTAL REVIEW

ROE HIGHWAY EXTENSION

WELSHPOOL ROAD TO SOUTH STREET

MAIN ROADS, WESTERN AUSTRALIA

April 1993.

REC95139 Document Number: P170

CONTENTS

MAKING A SUBMISSION ON THIS PROPOSAL

SUMMARY

LIST OF COMMITMENTS

CONTENTS

LIST OF FIGURES

LIST OF ATTACHMENTS

1. INTRODUCTION

2. JUSTIFICATION

2.1 National Arterial Strategy

2.2 Socio-economic Benefits

2.3 Traffic Volumes

3. DESIGN FEATURES

4. EXISTING ENVIRONMENT

4.1 Landforms and Soils

4.2 Watercourses and Hydrology

4.3 Flora and Vegetation

4.4 Fauna

4.5 Archaeology

4.6 Ethnography and Cultural Features

4.7 Surrounding Landuse

5. POTENTIAL IMPACTS AND THEIR MANAGEMENT

5.1 Watercourses and Hydrology

5.2 Flora and Vegetation

5.3 Fauna

5.4 Brixton Street - Flora and Fauna Constraints

5.5 Archaeology

5.6 Ethnography

5.7 Social Impacts

CONTENTS (Continued)

- 5.7.1 Severance
- 5.7.2 Access to Roe Highway
- 5.7.3 Temporary and Long-term Alteration in Traffic Flow
- 5.7.4 Traffic Noise and Visual Intrusion
- 5.7.5 Nuisance During Construction

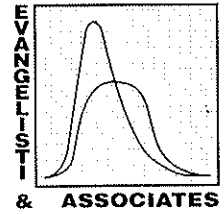
6. REFERENCES

LIST OF FIGURES

- 1.1 Existing and Planned Sections of the Roe Highway project
- 2.1 Existing Traffic Volumes in the Area
- 3.1 Concept Diagram for Roe Highway - Welshpool Road to South Street
- 3.2 Schematic diagrams of a Diamond Interchange and a Left In-Left Out intersection
- 3.3 Typical Cross Section of Roe Highway
- 4.1 Soils in the region of the Roe Highway extension
- 4.2 Vegetation in the Highway Reserve
- 4.3 Adjacent Landuse - Roe Highway, Welshpool Road to South Street
- 5.1 Profile of the Concept sketches for the bridges over the Canning River
- 5.2 Proposed Landscape Treatment Zones

LIST OF ATTACHMENTS

- APPENDIX A: Guidelines for the Preparation of the PER
- APPENDIX B: Detailed Preliminary Plans Roe Highway, Welshpool Road to South Street
- APPENDIX C: Biological Survey Report
- APPENDIX D: Report on the Archaeological Survey
- APPENDIX E: Report on the Ethnographic Survey
- APPENDIX F: Options for the Brixton Street crossing
- APPENDIX G: Public Information and Consultation



WATER RESOURCES MANAGEMENT PLAN

MIDDLE CANNING CATCHMENT

(STAGE 1 - VOLUME 1)

Prepared for the

Water Authority of Western Australia

By

Evangelisti & Associates
Consulting Engineers and Project Managers

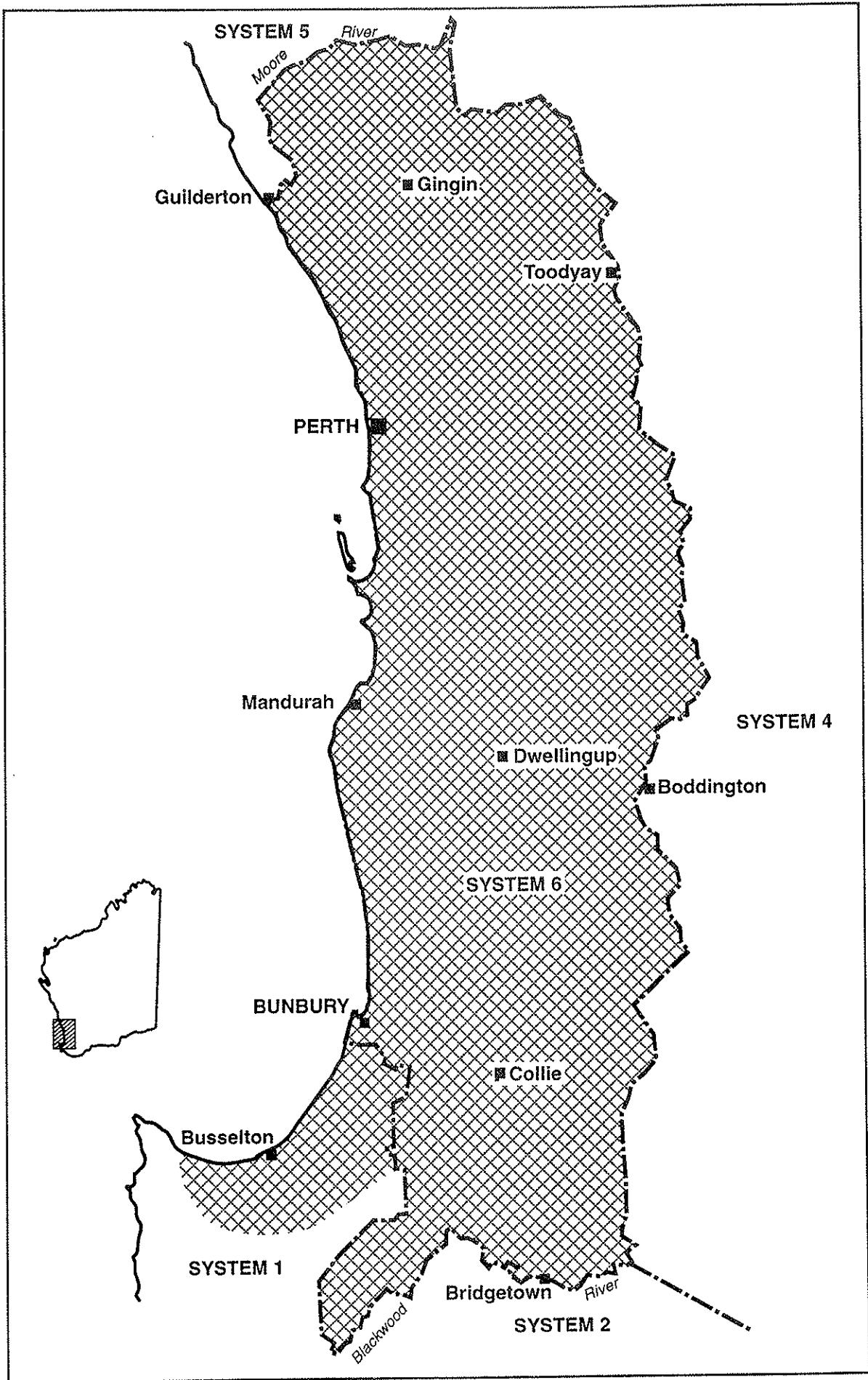
in association with

Landvision
Consultants in Urban and Environmental Planning

and

The V & C Semeniuk Research Group
Environmental Scientists

October 1995



SYSTEM 6 UPDATE PROGRAMME STUDY AREA

System area
M75

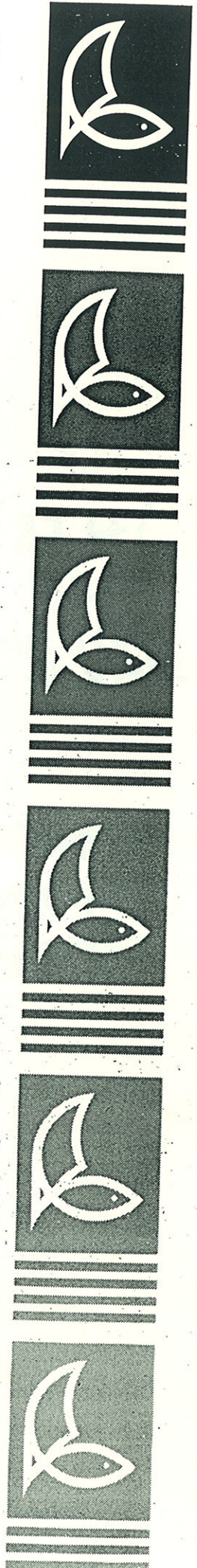
SWAN RIVER TRUST

Frin... the
C... and
Wungong Rivers

**Full document
available
on request**



Swan River Trust
Report No 7
1993

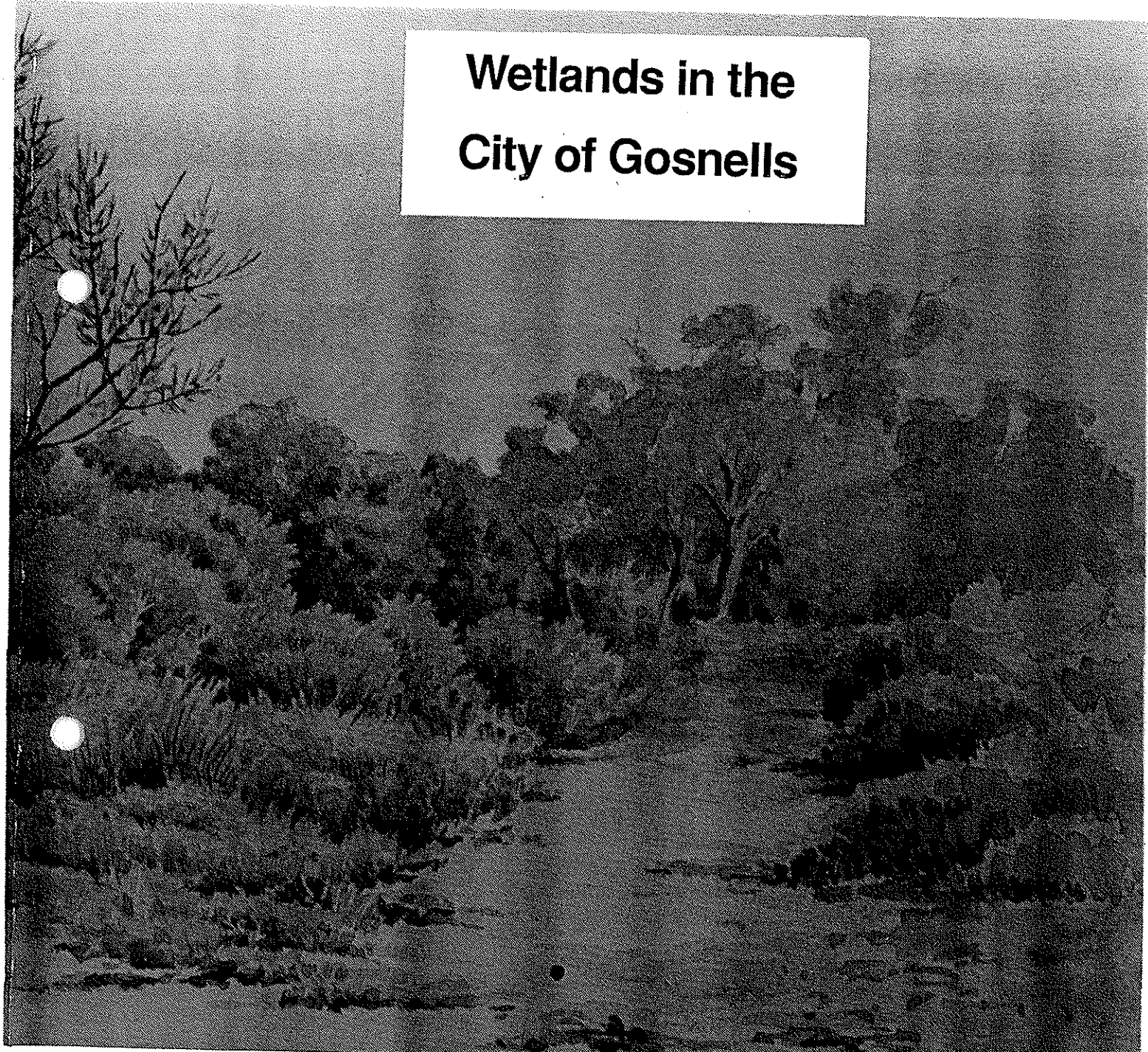


BS 246
Rivers



Water Authority
of Western Australia

Wetlands in the City of Gosnells



1.48(941)

Copy A



930344/1

Department of Environmental Protection Library

551.448
PAY.
9303441

ENVIRONMENTAL PROTECTION AUTHORITY
LIBRARY
WETLANDS PROGRAM
35 ROBERTS BAY ROAD, PERTH

BS 387
BRIXTON
FOOT



Water Authority
of Western Australia

BS 246
CANNING
RIVERS

BS 236
ELLIS BRK
RIVERS

BS 413
BALANNUK
BASS S

Wetlands in the City of Gosnells

BS 53
CLIFFORD
FOOT

Joan Payne

BS 124
MARYCAROL
FOOT

(edited by Andrew Del Marco)

BS 224/
225
CANNING
RIVER

A report to the
Water Authority of Western Australia
and the
Environmental Protection Authority

BS 456
NICHOLSON
FOOT

BS 464
PASSMORE
BASS S

BS 125/
454
HOLMES BASS

Published by the

Water Authority of Western Australia
John Tonkin Water Centre
629 Newcastle Street
Leederville WA 6007

BS 422
KENNICK RD
FOOT

BS 340
PASSMORE
BASS S

Report No. WP 160
April 1993

BS 472
CANNING
VALE
BASS S

CONTENTS

	Page No
ACKNOWLEDGEMENTS	2
EXECUTIVE SUMMARY	5
1. INTRODUCTION	7
1.1 The Importance of Wetlands	7
1.2 The City of Gosnells	7
1.3 About This Booklet	8
2. THE WETLANDS OF THE CITY OF GOSNELLS	9
2.1 Defining Wetlands	9
2.2 Mapping and Classifying Wetlands	9
2.3 The Types of Wetlands in the City of Gosnells	11
2.3.1 The Southern Damplands and Sumplands	13
2.3.2 The Kenwick Palusplain and Sumplands	13
2.3.3 The Canning River and Associated Palusplain and Floodplain	14
2.4 Natural Wetland Groupings	14
3. EVALUATING THE CITY'S WETLANDS	16
3.1 Wetland Evaluation and Management Categories	16
3.2 Application of Bulletin 374 in the City of Gosnells	17
3.2.1 Adapting Bulletin 374 for Use in the City of Gosnells	18
3.2.2 Naming the City of Gosnells' Wetlands	18
3.2.3 Wetland Vegetation Assessment	18
3.3 Management Categories for the City of Gosnells' Wetlands	21
3.3.1 High Conservation Wetlands	21
3.3.2 Conservation and Open Space Wetlands	22
3.3.3 Resource Enhancement and Multiple Use Wetlands	26
3.4 THE IMPORTANCE OF DAMPLANDS AND PALUSPLAINS	27
4. IMPLICATIONS FOR MANAGEMENT	29
4.1 Management Objectives for Gosnells' Wetlands	29
4.2 Managing the Wetland Water Resource	29
4.3 Regional Management Considerations	30
4.4 Conservation of Damplands, Palusplains and Rare Species	32
4.5 Wetland Conservation and the EPA Lakes EPP	34
4.6 Wetland Buffers	34
4.7 Wetlands of Special Note	35
4.7.1 Balannup Lake	35
4.7.2 Canning Vale Prison Dampland	36
4.7.3 Balfour/Furley Road Dampland	36

4.7.4	Holmes/Balfour Road Sumpland	36
4.7.5	Mary Carroll Park (Lakes)	36
4.7.6	Brixton Street Wetland Complex	37
4.7.7	Hume Road Reserve, Thornlie	38
4.8	Where To From Here	38
5.	BIBLIOGRAPHY	39
6.	GLOSSARY	42
7.	APPENDICES	43

LIST OF TABLES

Table 1	Wetland Types defined by the Semeniuk Wetland Classification System	10
Table 2	Area Covered by Each Wetland Type in the City of Gosnells	11
Table 3	Natural Groups of Wetlands in the City of Gosnells	15
Table 4	Wetland Management Categories and Objectives (EPA Bulletin 374)	16
Table 5	Wetland and Surrounding Upland Vegetation Categories	19
Table 6	Summary of Management Categories for Each of the City's Wetland Types	21
Table 7	Wetlands in the City of Gosnells - Listing of Each of the City's Wetlands by Wetland Number	24
Table 8	Rare Flora and Fauna Supported by High Conservation Wetlands in the City of Gosnells	22
Table 9	"Conservation" and "Open Space" Wetlands in the City of Gosnells	26

LIST OF FIGURES AND MAPS

Figure 1	Location of the City of Gosnells	8
Figure 2	Basin Wetlands in Relation to Water Level Fluctuation	10
Map 1	Wetlands in the City of Gosnells	12
Figure 3	Orthophoto image of Southern River/Balannup Area	12
Map 2	Preliminary Wetland Management Categories for Wetlands in the City of Gosnells	23
Figure 4	Water Sensitive Design: Use of Public Open Space for Stormwater Drainage	30
Figure 5	Gosnells' Wetlands in a Regional Perspective	31
Figure 6	Gosnells' Wetlands, the Lakes EPP and Bulletin 374 management categories.	33
Figure 7	Wetland Buffers	35