

## SERPENTINE RIVER, PEEL ESTATE TO SERPENTINE

**Boundary Definition:** bushland boundary

### **SECTION 1: LOCATION INFORMATION**

**Bush Forever Site no.** 371

**Area (ha):** bushland 86.4

**Map no.** 77, 78

**Map sheet series ref. no.** 2033-II NE

**Other Names:** not known

**Local Authorities (Suburb):** Shire of Serpentine–Jarrahdale (Serpentine, Mardella)

**System 6 (1983):** Part M105 part System area bushland and part scattered native plants (canopy), all vegetation described

### **SECTION 2: REGIONAL INFORMATION**

#### **LANDFORMS AND SOILS**

##### **Foothills**

Colluvial Deposits (Qc: Csg)

##### **Pinjarra Plain**

Guildford Formation (Qpa: Cs) (Qha: Msc1)

##### **Bassendean Dunes**

Bassendean Sands (Qpb: S8)

##### **Bassendean Dunes/Pinjarra Plain**

Bassendean Sands over Guildford Formation (Qpb/Qpa: S10)

#### **VEGETATION AND FLORA**

##### **Vegetation Complex**

###### **Foothills**

Forrestfield Complex (Ridge Hill Shelf, Darling Plateau)

###### **Pinjarra Plain**

Guildford Complex

###### **Bassendean Dunes**

Bassendean Complex — Central and South

###### **Combinations of Bassendean Dunes/Pinjarra Plain**

Southern River Complex

**Floristic Community Types:** not sampled, types not inferred

#### **WETLANDS**

**Wetland Types:** dampland, palusplain, creek, artificial channel, river

##### **Natural Wetland Groups**

**Bassendean—Pinjarra transition OR Bassendean with fluvial features**

Bennet Brook (B/P.4)

**Swan Coastal Plain Rivers**

Goegrup (R.4)

**Wetland Management Objectives:** Conservation (53.1ha, 33m), Resource Enhancement, Multiple Use

**Swan Coastal Plain Lakes EPP:** none identified

#### **THREATENED ECOLOGICAL COMMUNITIES**

Not determined

### **SECTION 3: SPECIFIC SITE DETAIL**

**Landscape Features:** vegetated wetland, creek, river, vegetated uplands

**Vegetation and Flora:** limited survey (Mattiske Consulting Pty Ltd 1997, Connell 1995); detailed survey (Chambers and Pen 1985, Siemon *et al.* 1993)

**Structural Units:** mapping (Chambers and Pen 1985, Siemon *et al.* 1993)

Wetlands: *Eucalyptus rudis* and *Melaleuca raphiophylla* Woodland; *Eucalyptus rudis* Open Forest; Closed Sedgeland dominated by *Juncus kraussii*, *J. microcephalus* and *Isolepis nodosa*

**Scattered Native Plants:** not assessed

**Vegetation Condition:** varies from patches in Excellent Condition with an understorey of sedges and shrubs, to Completely Degraded with a pasture/weed understorey

**Total Flora:** not known

**Significant Flora:** none recorded

**Fauna:** not known

**Linkage:** adjacent bushland to the south (Site 365) and east (Site 368); part of Greenways 64, 65, 106 (Tingay, Alan & Associates 1998a); part of a regionally significant fragmented bushland/wetland linkage (Part A, Map 7)

**Other Special Attributes:** Contains plant communities representative of the eastern side of the Swan Coastal Plain; National Trust of Australia (WA) Classification; bushland/naturally vegetated watercourses have particular conservation value in providing habitat for fauna and linkage between larger, more intact areas of bushland; contains regionally significant river (WRC 1996a GIS)

***SECTION 4: INTERNATIONAL AND NATIONAL SIGNIFICANCE***

Not listed

***SECTION 5: SELECTION CRITERIA AND RECOMMENDATIONS***

**Criteria:** Representation of ecological communities, Rarity, Scientific or evolutionary importance, General criteria for the protection of wetland, streamline and estuarine fringing vegetation and coastal vegetation

**Recommendation:** Creepline; Regional Creepline Mechanism (with mapped vegetation) (see Table 3, Volume 1).

**SERPENTINE RIVER, PEEL ESTATE TO SERPENTINE**

**Boundary Definition:** bushland boundary

**SECTION 1: CADASTRAL INFORMATION**

(Lots, locations and derived information to be updated in the public submission period)

**Bushplan Site no.** 371      **Map no.** 95, 96      **Map sheet series ref. no.** 2033-II NE  
**System 6 (1983):** Part M105 part System area bushland and part scattered native plants (canopy), all vegetation described

**Other Names:** not known  
**Local Authorities (Suburb)**  
 Shire of Serpentine-Jarrahdale (Serpentine, Mardella)

**Area (ha):** total 87.8; bushland 86.4  
**Zoning**  
**MRS:** Rural, Railways, Other Major Highways  
**TPS:** Landscape, Public Open Space, Drainage Purposes, Public and Community Purposes, Rural  
**Lot/Location/Reserve numbers (Purpose), Street name**  
 (Riverine and creekline lots not identified)  
 1322 Lowlands Rd; 71, 143 Summerfield Rd  
 Crown Reserve

**Ownership Categories**

Private (including commercial organisation), State Government, Not identified

**SECTION 2: REGIONAL INFORMATION**

**LANDFORMS AND SOILS**

**Foothills**

Colluvial Deposits (Qc: Csg)

**Pinjarra Plain**

Guildford Formation (Qpa: Cs) (Qha: Msc1)

**Bassendean Dunes**

Bassendean Sands (Qpb: S8)

**Bassendean Dunes/Pinjarra Plain**

Bassendean Sands over Guildford Formation (Qpb/Qpa: S10)

**VEGETATION AND FLORA**

**Vegetation Complex**

**Foothills**

Forrestfield Complex (Ridge Hill Shelf, Darling Plateau)

**Pinjarra Plain**

Guildford Complex

**Bassendean Dunes**

Bassendean Complex — Central and South

**Combinations of Bassendean Dunes/Pinjarra Plain**

Southern River Complex

**Floristic Community Types:** not sampled, types not inferred

**WETLANDS**

**Wetland Types:** dampland, palusplain, creek, artificial channel, river

**Natural Wetland Groups**

**Bassendean—Pinjarra transition OR Bassendean with fluvial features**

Bennet Brook (B/P.4)

**Swan Coastal Plain Rivers**

Goegrup (R.4)

**Wetland Management Objectives:** Conservation (53.1ha, 33m), Resource Enhancement, Multiple Use

**Swan Coastal Plain Lakes EPP:** none identified

**THREATENED ECOLOGICAL COMMUNITIES**

Not determined

**SECTION 3: SPECIFIC SITE DETAIL**

**Landscape Features:** vegetated wetland, creek, river, vegetated uplands

**Vegetation and Flora:** detailed survey (Chambers and Pen 1985, Siemon *et al.* 1993); limited survey (Mattiske Consulting Pty Ltd 1997, Connell 1995)

**Structural Units:** mapping (Siemon *et al.* 1993, Chambers and Pen 1985)

Wetlands: *Eucalyptus rudis* and *Melaleuca raphiophylla* Woodland; *Eucalyptus rudis* Open Forest; Closed Sedgeland dominated by *Juncus kraussii*, *J. microcephalus* and *Isolepis nodosa*

**Scattered Native Plants:** not assessed

**Vegetation Condition:** varies from patches in Excellent Condition with an understorey of sedges and shrubs to Completely Degraded with a pasture/weed understorey

**Total Flora:** not known



**Significant Flora:** none recorded

**Fauna:** no known information

**Linkage:** adjacent bushland to the south (BS365) and east (BS368); part of proposed Greenways 81, 120 (Tingay, Alan & Associates 1997a); part of a regionally significant fragmented bushland/wetland linkage (Volume 2A, Map 8)

**Other Special Attributes:** Contains plant communities representative of the eastern side of the Swan Coastal Plain; National Trust of Australia (WA) Classification; bushland/naturally vegetated watercourses have particular conservation value in providing habitat for fauna and linkage between larger, more intact areas of bushland; contains regionally significant river (WRC 1996a GIS)

**SECTION 4: INTERNATIONAL AND NATIONAL SIGNIFICANCE**

Not listed

**SECTION 5: SELECTION CRITERIA AND RECOMMENDATIONS**

**Criteria:** Representation of ecological communities, Rarity, Scientific or evolutionary importance, General criteria for the protection of wetland, streamline and estuarine fringing and coastal vegetation

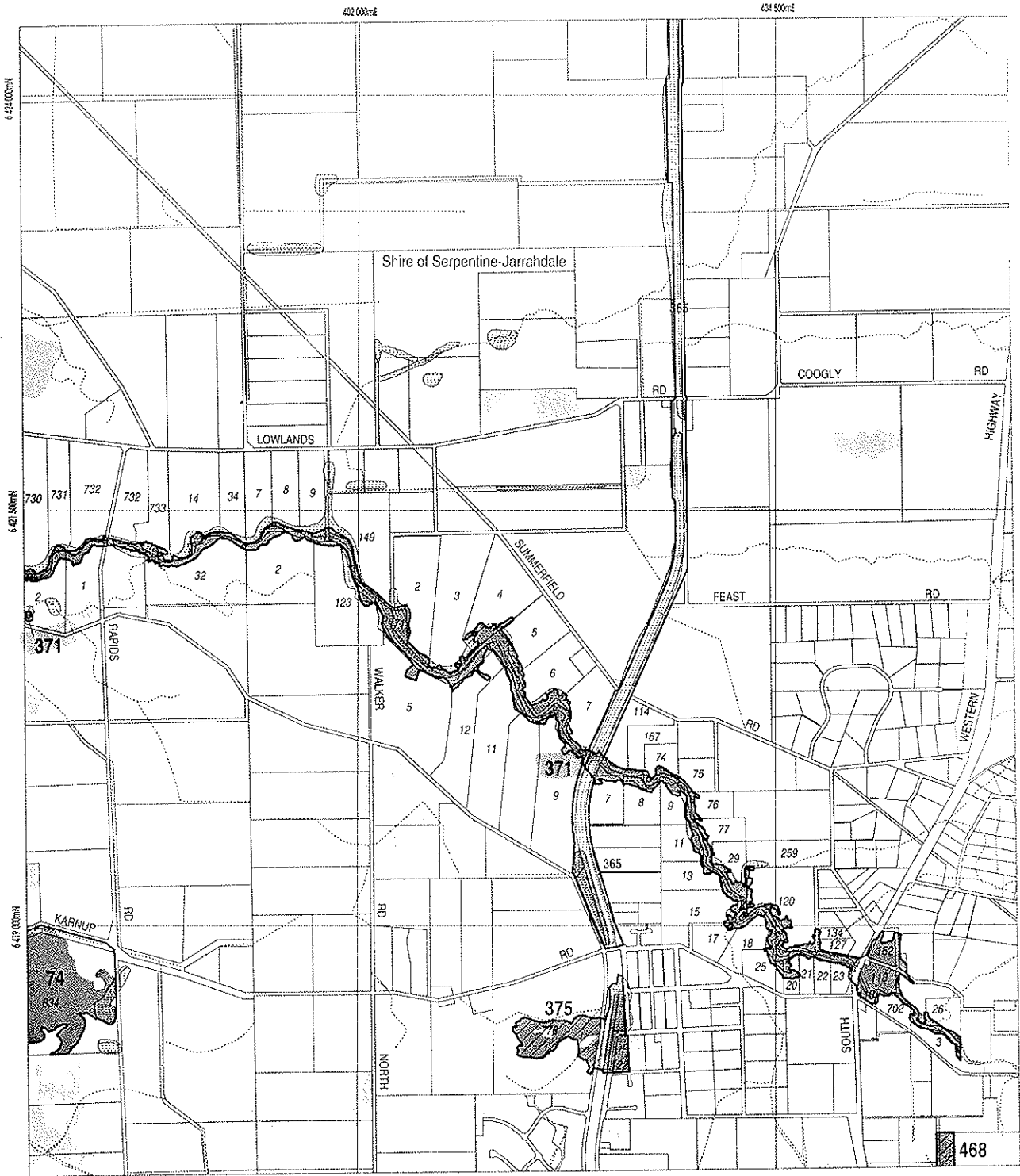
**Opportunities and/or Constraints**

**Opportunities:** Bushplan Site/part Bushplan Site subject to Peel-Harvey Estuary EPP/SPP; location of conservation category wetlands; under TPS Landscape Zoning and Public Open Space Zoning, Crown Reserve

**Constraints:** private land; under MRD regional road requirements, General Mineral Resource Area (clay and shale)

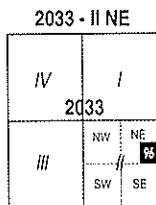
**Recommendation:** The most appropriate mechanism for the protection of this Bushplan Site be considered through the public comment period in consultation with the land owner(s).





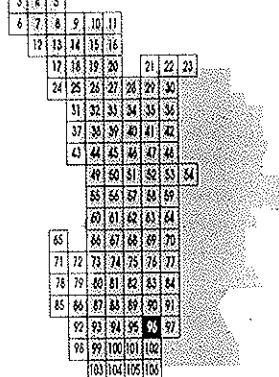
**LEGEND**

-  472 Bushplan Sites With Regionally Significant Bushland
-  Other Native Vegetation
-  Conservation Category Wetlands
-  Bushplan Sites With Some Existing Protection
-  696 Lot Number, Location Number
-  Channel Wetlands
-  Local Government Boundary



1: 25 000 AMG Reference Grid showing Perth's Bushplan Map Sheet Breakdown

**PERTH'S BUSHPLAN MAP INDEX**



**SCALE**



Produced by Project Mapping Section  
Land Information Branch, Ministry for  
Planning, Perth W.A. November 1998  
ntw-map17/enviro/bushplan/bushv2\_96.dgn  
Cadastral Data supplied by Department  
of Land Administration, W.A.  
Wetlands Data supplied by  
Water and Rivers Commission  
Native Vegetation Extent for Study Area  
supplied by Agriculture Western Australia



**LEGEND**

- 472 Bushplan Sites With Regionally Significant Bushland
- Other Native Vegetation
- Conservation Category Wetlands
- Bushplan Sites With Some Existing Protection
- 696 Lot Number, Location Number
- ..... Channel Wetlands
- Local Government Boundary

**2033 - II NE**

IV	I
2033	
III	II
NW	NE
SW	SE

1 : 25 000 AMG Reference Grid showing Perth's Bushplan Map Sheet Breakdown

**PERTH'S BUSHPLAN MAP INDEX**

1	2									
3	4	5								
6	7	8	9	10	11					
12	13	14	15	16						
17	18	19	20	21	22	23				
24	25	26	27	28	29	30				
31	32	33	34	35	36					
37	38	39	40	41	42					
43	44	45	46	47	48					
49	50	51	52	53	54					
55	56	57	58	59						
60	61	62	63	64						
65	66	67	68	69	70					
71	72	73	74	75	76	77				
78	79	80	81	82	83	84				
85	86	87	88	89	90	91				
92	93	94	95	96	97					
98	99	100	101	102						
103	104	105	106							

**SCALE**

0      500      1000

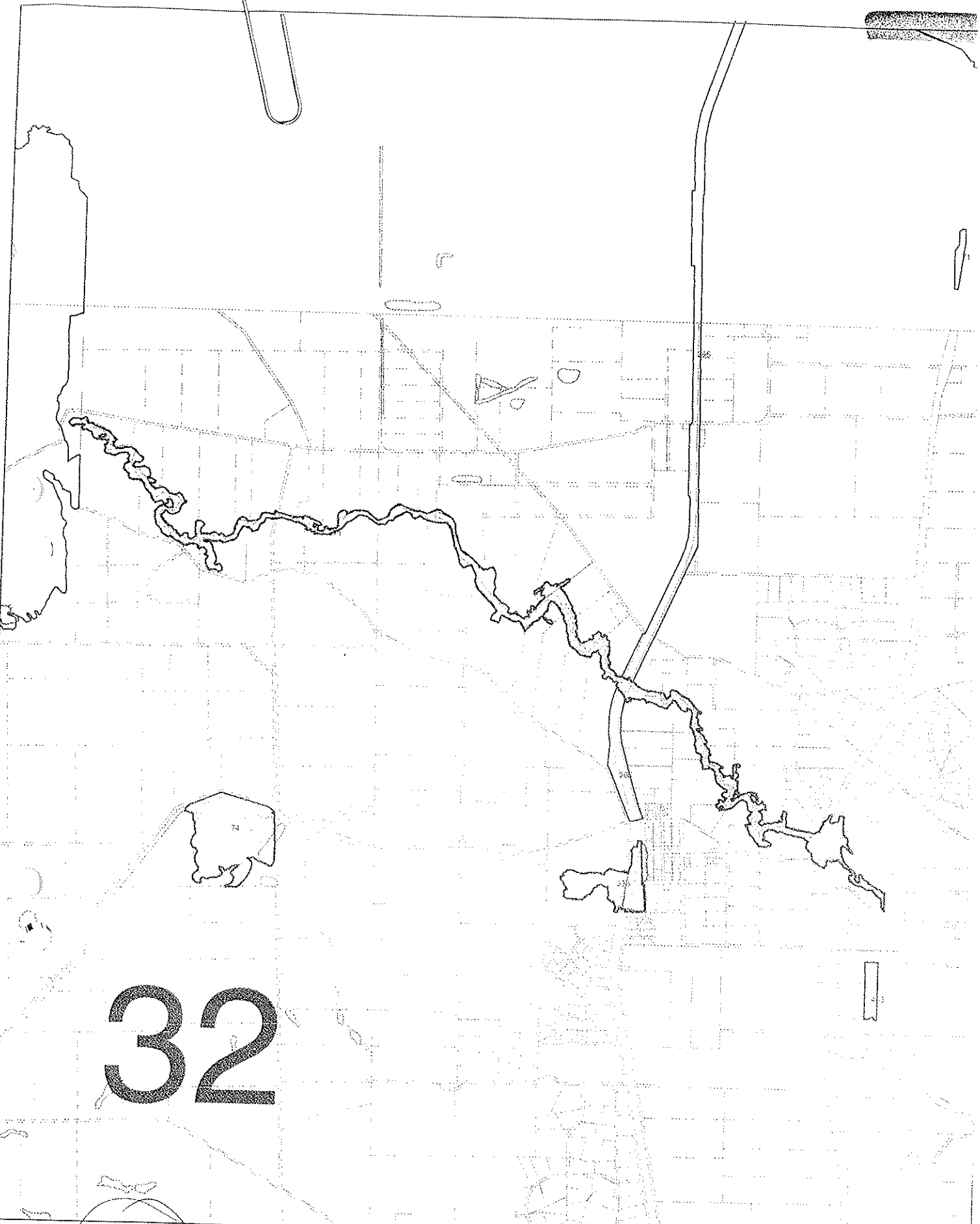
Metres

Produced by Project Mapping Section  
Land Information Branch, Ministry for  
Planning, Perth W.A. November 1998  
ntw-map17/viron/bushplan/bushv2\_95.dgn

Cadastral Data supplied by Department  
of Land Administration, W.A.

Wetlands Data supplied by  
Water and Rivers Commission

Native Vegetation Extent for Study Area  
supplied by Agriculture Western Australia



32

1/FS

BUSHPLAN SITES CORRECTED

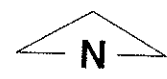


WESTERN AUSTRALIAN PLANNING COMMISSION








CUSTOMER FOCUS WESTERN AUSTRALIA

B 76 2/10/18



bp site 371 & 373  
 SEPARATE plot of 421  
 & 424

-  AG VEG 1998 BOUNDARY THEME
-  Cadastre
-  Bushplan sites refno 1-500 SCP BOUNDARY
-  cons category wetlands
-  Verified CCWs

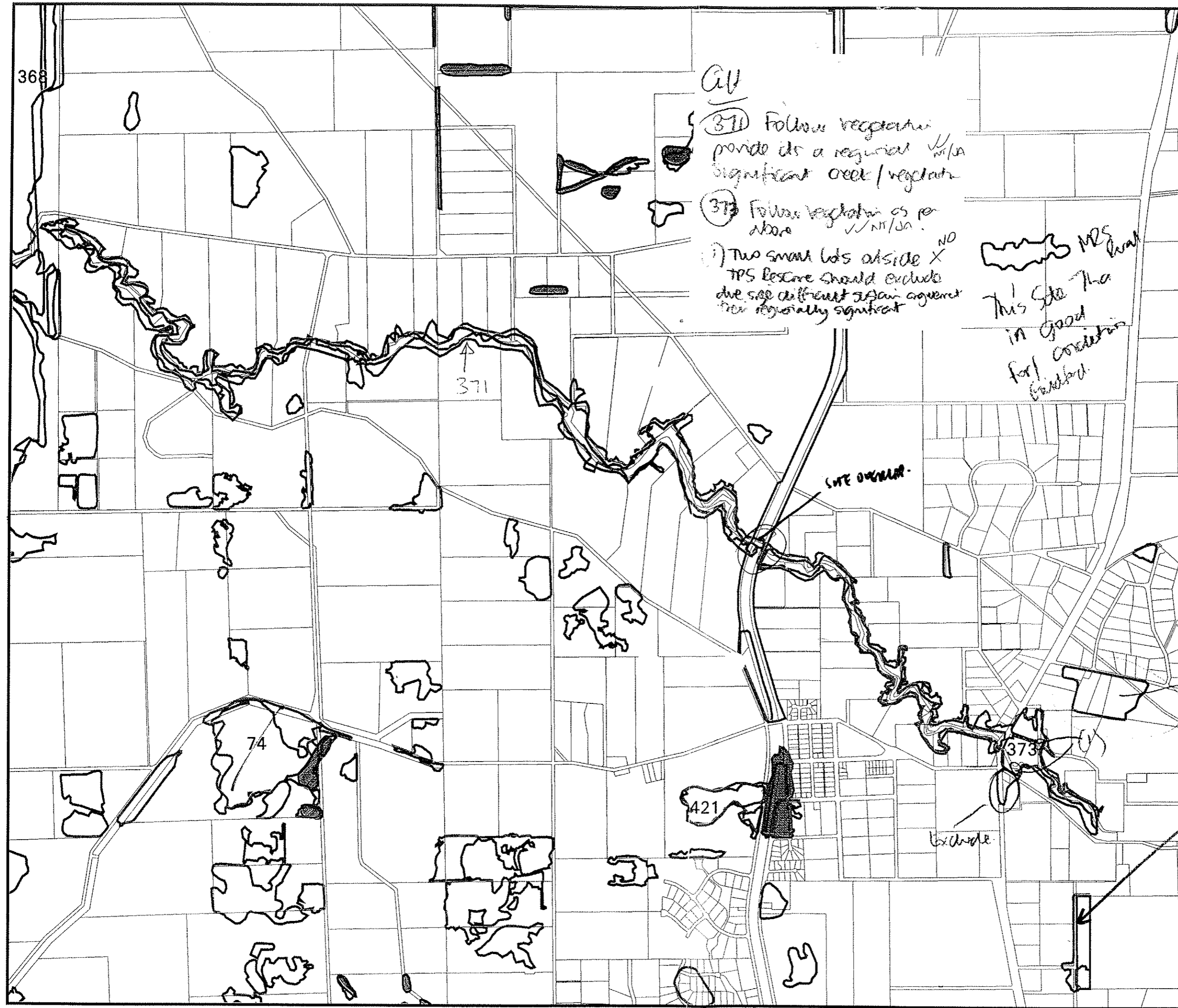
CUV  
 (371) Follow vegetation provide as a regional  $\checkmark$  NT/DA significant creek / vegetation  
 (373) Follow vegetation as per above  $\checkmark$  NT/DA  
 (i) Two small lots outside X TPS Reserve should exclude due see different sign agreement for regionally significant

MS land  
 This site has  
 in good  
 for condition  
 (handwritten note with arrow pointing to site 373)

NT/DA 30/9  
 All of 371 + 373  
 pt of Reg. Sig  
 wetland  
 Follow Ag Veg boundary  
 for both 371 + 373

Parmyfield (Cuckoo)  
 in very good condition  
 situated trees in Bushplan  
 MS Reserve  
 100m total

WHAT  
 SITE IS  
 THIS?



Map Ident: plot980603\_1  
 Prepared By: Andrea Zappacosta  
 Prepared For:  
 Date: 03 Jun 98  
 Scale 1:23206  
 0 500 m  
 MFP INTERNAL USE ONLY

Subm 1781

BS 371

PB173

101

- xxiv. Serpentine River Site [REDACTED] Vol 2 pg 403-404, Council believes that protection and management of the river and associated vegetation is best achieved by working directly with the affected landowners. Council recognizes the Serpentine River Group as the representative body of river landowners, and supports the activities of this group. The Ministry and other state government agencies are strongly encouraged to work with the Group.
- xxv. Council supports the use of regionally and locally significant bushland areas for bridle trails where such use can be responsibly managed (e.g. Cardup Siding Nature Reserve, Brickwood Reserve)
- xxvi. Council is of the opinion that bushland and wetland within Reserves 41485 and 41569 Oakford, is of regional significance. The most intact vegetation occurs north of Foxton Drive, Oakford. Fauna surveying has occurred in 1999 by a Federal Government funded GreenCorp project. (map enclosed)

Please do not hesitate to contact the Shire's Environmental Officer on 9526 1127 should you require clarification of the above.

Yours faithfully



ANDREW DEL MARCO  
ENVIRONMENTAL OFFICER

Enc.

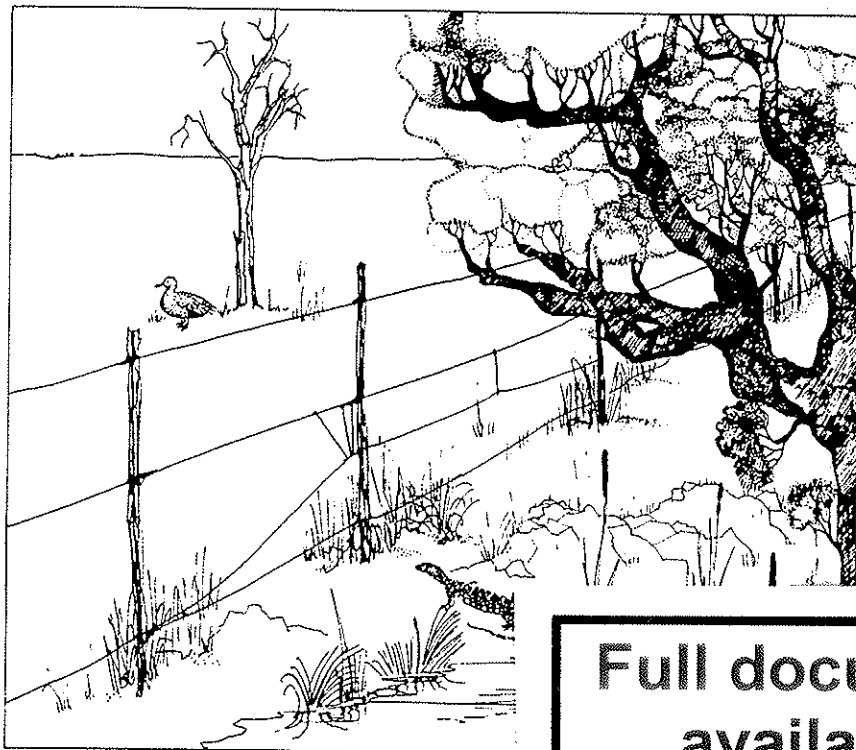
c.c. Cr J Star

Reg

3.30

# PEEL INLET MANAGEMENT AUTHORITY

## Fringing vegetation of the Serpentine River in the Shire of Serpentine- Jarrahdale and City of Rockingham



Full document  
available  
on request

Waterways Commission  
Report No. 38  
1993

