

BALDIVIS ROAD BUSHLAND, BALDIVIS

Boundary Definition: protected area/bushland (part taken to cadastre/zoning) boundary (Areas of bushland within the boundaries of the Site are not accurately mapped.)

SECTION 1: LOCATION INFORMATION

Bush Forever Site no. 376

Area (ha): bushland 133.0 (Site also includes open water.)

Map no. 75

Map sheet series ref. no. 2033-II SW, 2033-II NW

Other Names: Karnup Nature Reserve included in Site, Part Submission Area 245

Local Authorities (Suburb): City of Rockingham (Baldivis)

SECTION 2: REGIONAL INFORMATION

LANDFORMS AND SOILS

Pinjarra Plain

Guildford Formation (Qpa: C2, Mc2)

Bassendean Dunes

Bassendean Sands (Qpb: S8)

Spearwood Dunes

Sands derived from Tamala Limestone (Qts: S7)

VEGETATION AND FLORA

Vegetation Complexes

Pinjarra Plain

Serpentine River Complex

Spearwood Dunes

Karrakatta Complex — Central and South

Floristic Community Types: *not sampled, types inferred (partial coverage)

Supergroup 2: Seasonal Wetlands

Supergroup 3: Uplands centred on Bassendean Dunes and Dandaragan Plateau

*21a Central *Banksia attenuata* — *Eucalyptus marginata* woodlands

Supergroup 4: Uplands centred on Spearwood and Quindalup Dunes

*28 Spearwood *Banksia attenuata* or *B. attenuata* — *Eucalyptus* woodlands

WETLANDS

Wetland Types: palusplain

Natural Wetland Groups

Pinjarra Plain

Keysbrook (P.1)

Bassendean Dunes

Gnangara (B.2)

Spearwood Dunes

Stakehill (S.4)

Swan Coastal Plain Rivers

Goegrup (R.4)

Wetland Management Objectives: Multiple Use

Swan Coastal Plain Lakes EPP: none identified

THREATENED ECOLOGICAL COMMUNITIES

Not assessed

SECTION 3. SPECIFIC SITE DETAIL

Vegetation Condition: >20% Excellent, >40% Very Good, >25% Good, with areas of severe localised disturbance

Total Flora: not known

Significant Flora: not recorded

Fauna: not known

Linkage: adjacent bushland to the west (canopy, across road); part of Greenway 67, 84 (Tingay, Alan & Associates 1998a); part of a regionally significant fragmented bushland/wetland linkage (Part A, Map 7)

SECTION 4: INTERNATIONAL AND NATIONAL SIGNIFICANCE

Not listed

SECTION 5: SELECTION CRITERIA AND RECOMMENDATIONS

Criteria: Representation of ecological communities, General criteria for the protection of wetland, streamline and estuarine fringing vegetation and coastal vegetation

Recommendation: Part A: Site with Some Existing Protection; Existing Parks and Recreation Reserve. Part B: Rural Complementary Mechanism. Part C: Other Government Land Mechanism (see Table 3, Volume 1).

BALDIVIS ROAD BUSHLAND, BALDIVIS

Boundary Definition: protected area/bushland (part taken to cadastre/zoning) boundary (Areas of bushland within the boundaries of the Bushplan Site are not accurately mapped.)

SECTION 1: CADASTRAL INFORMATION

(Lots, locations and derived information to be updated in the public submission period)

Bushplan Site no. 376 **Map no.** 94, 99, 100 **Map sheet series ref. no.** 2033-II SW, 2033-II NW

Other Names

Karnup Nature Reserve included in Bushplan Site, Part Submission Area 245

Local Authorities (Suburb)

City of Rockingham (Baldivis)

Ownership Categories

Private, State Government

Area (ha): total 157.8 (includes open water); bushland 133.0

Zoning

MRS: Rural, Parks and Recreation, Important Regional Roads

TPS: Rural, Special Rural, Local Roads, Landscape

Lot/Location/Reserve numbers (Purpose),

Street name

1, 2, 41 Karnup Rd; 33, 101 Foster Rd; 200, 201, 1095 Baldivis Rd; 42 Sixty Eight Rd; 212, 213, 214, 215, 216, 217, 218, 219, 220, 221 Wicksteed Ct; 202, 203, 204, 205, 206, 210, 211 Diogenes Ct
Crown Reserve

SECTION 2: REGIONAL INFORMATION

LANDFORMS AND SOILS

Pinjarra Plain

Guildford Formation (Qpa: C2, Mc2)

Bassendean Dunes

Bassendean Sands (Qpb: S8)

Spearwood Dunes

Sands derived from Tamala Limestone (Qts: S7)

VEGETATION AND FLORA

Vegetation Complexes

Pinjarra Plain

Serpentine River Complex

Spearwood Dunes

Karrakatta Complex — Central and South

Floristic Community Types: *not sampled, types inferred (partial coverage)

Supergroup 2: Seasonal Wetlands — not sampled, type not inferred

Supergroup 3: Uplands centred on Bassendean Dunes and Dandaragan Plateau

*21a Central *Banksia attenuata* — *Eucalyptus marginata* woodlands

Supergroup 4: Uplands centred on Spearwood and Quindalup Dunes

*28 Spearwood *Banksia attenuata* or *B. attenuata* — *Eucalyptus* woodlands

WETLANDS

Wetland Types: palusplain

Natural Wetland Groups

Pinjarra Plain

Keysbrook (P.1)

Bassendean Dunes

Gnangara (B.2)

Spearwood Dunes

Stakehill (S.4)

Swan Coastal Plain Rivers

Goegrup (R.4)

Wetland Management Objectives: Multiple Use

Swan Coastal Plain Lakes EPP: none identified

THREATENED ECOLOGICAL COMMUNITIES

Not assessed

SECTION 3: SPECIFIC SITE DETAIL

Landscape Features: vegetated uplands, vegetated wetlands

Vegetation and Flora: limited survey (DEP 1998 part roadside observations)

Structural Units

Uplands: Scattered *Eucalyptus marginata* over Mixed Open Forest of *E. calophylla*, *Allocasuarina fraseriana*, *Banksia attenuata*, *B. menziesii*, *B. grandis*; *Eucalyptus calophylla* Low Open Forest over *Banksia attenuata*, *B. menziesii* and *Allocasuarina fraseriana*; scattered *Eucalyptus calophylla* and *E. marginata* over Low Open Forest over *Banksia attenuata*, *B. menziesii* and *Allocasuarina fraseriana*; *Eucalyptus gomphocephala* Open Woodland

Wetlands: isolated patches of Low Closed Forest dominated by either *Eucalyptus rudis* or *Melaleuca raphiophylla*

Vegetation Condition: >20% Excellent, >40% Very Good, >25% Good, with areas of severe localised disturbance

Total Flora: not known

Significant Flora: not surveyed

Fauna: no known information

Linkage: adjacent bushland to the east and west; part of proposed Greenway 83 (Tingay, Alan & Associates 1997a); part of a regionally significant fragmented bushland/wetland linkage (Volume 2A, Map 8)

SECTION 4: INTERNATIONAL AND NATIONAL SIGNIFICANCE

Not listed

SECTION 5: SELECTION CRITERIA AND RECOMMENDATIONS

Criteria: Representation of ecological communities, General criteria for the protection of wetland, streamline and estuarine fringing and coastal vegetation

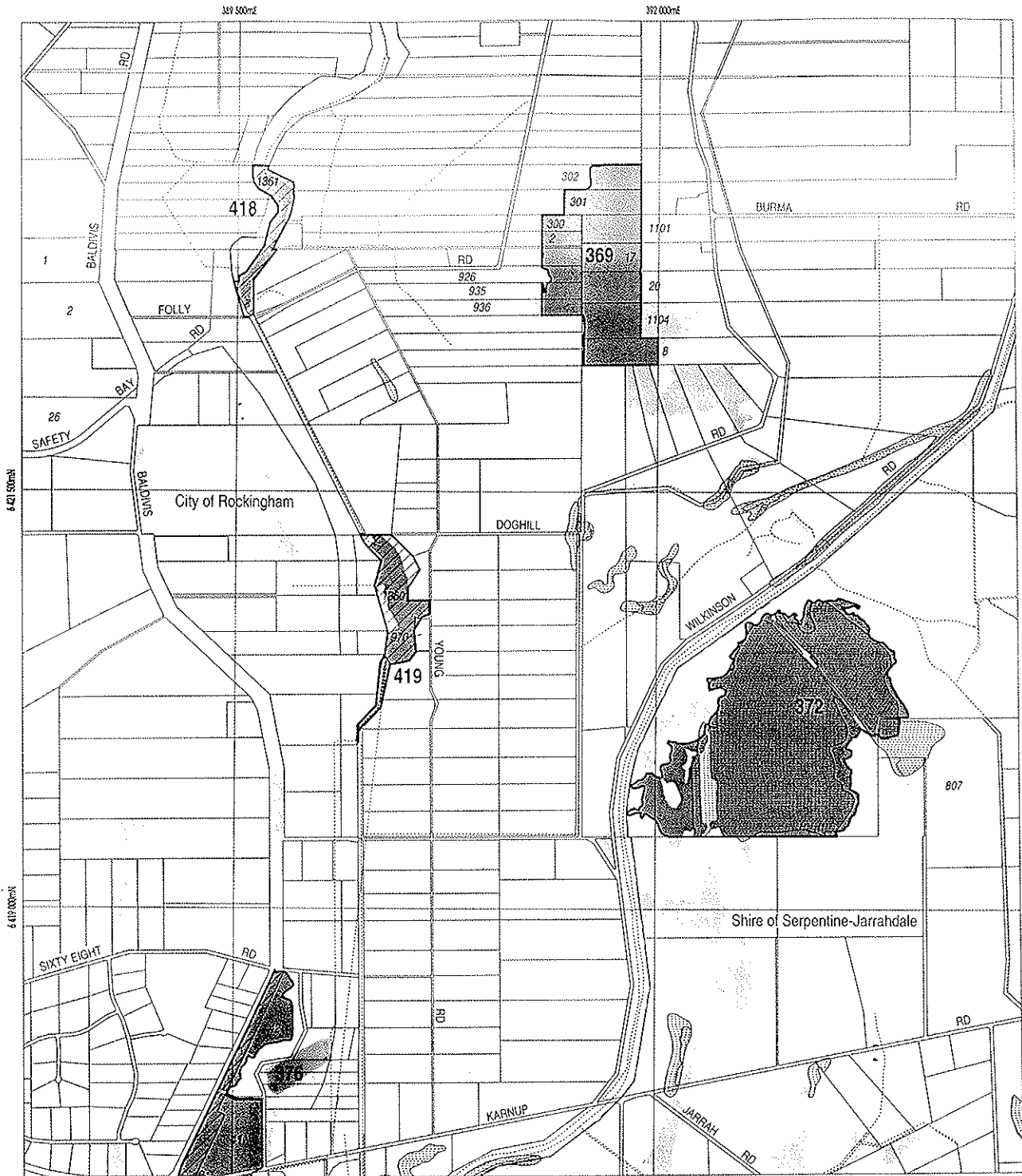
Opportunities and/or Constraints

Opportunities: Bushplan Site/part Bushplan Site subject to Peel-Harvey Estuary EPP/SPP; under MRS Parks and Recreation Reservation and TPS Landscape Zoning, Crown Reserve



Constraints: private land; under MRD regional road requirements, General Mineral Resource Area (clay)

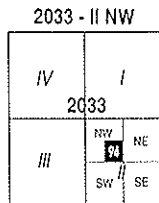
Recommendation: The most appropriate mechanism for the protection of this Bushplan Site be considered through the public comment period in consultation with the land owner(s).





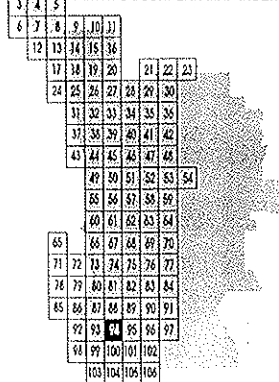
LEGEND

-  Bushplan Sites With Regionally Significant Bushland
-  Other Native Vegetation
-  Conservation Category Wetlands
-  Bushplan Sites With Some Existing Protection
-  Lot Number, Location Map
-  Channel Wetlands
-  Local Government Boundary

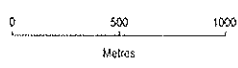


1:25 000 AMG Reference Grid showing Perth's Bushplan Map Sheet Breakdown

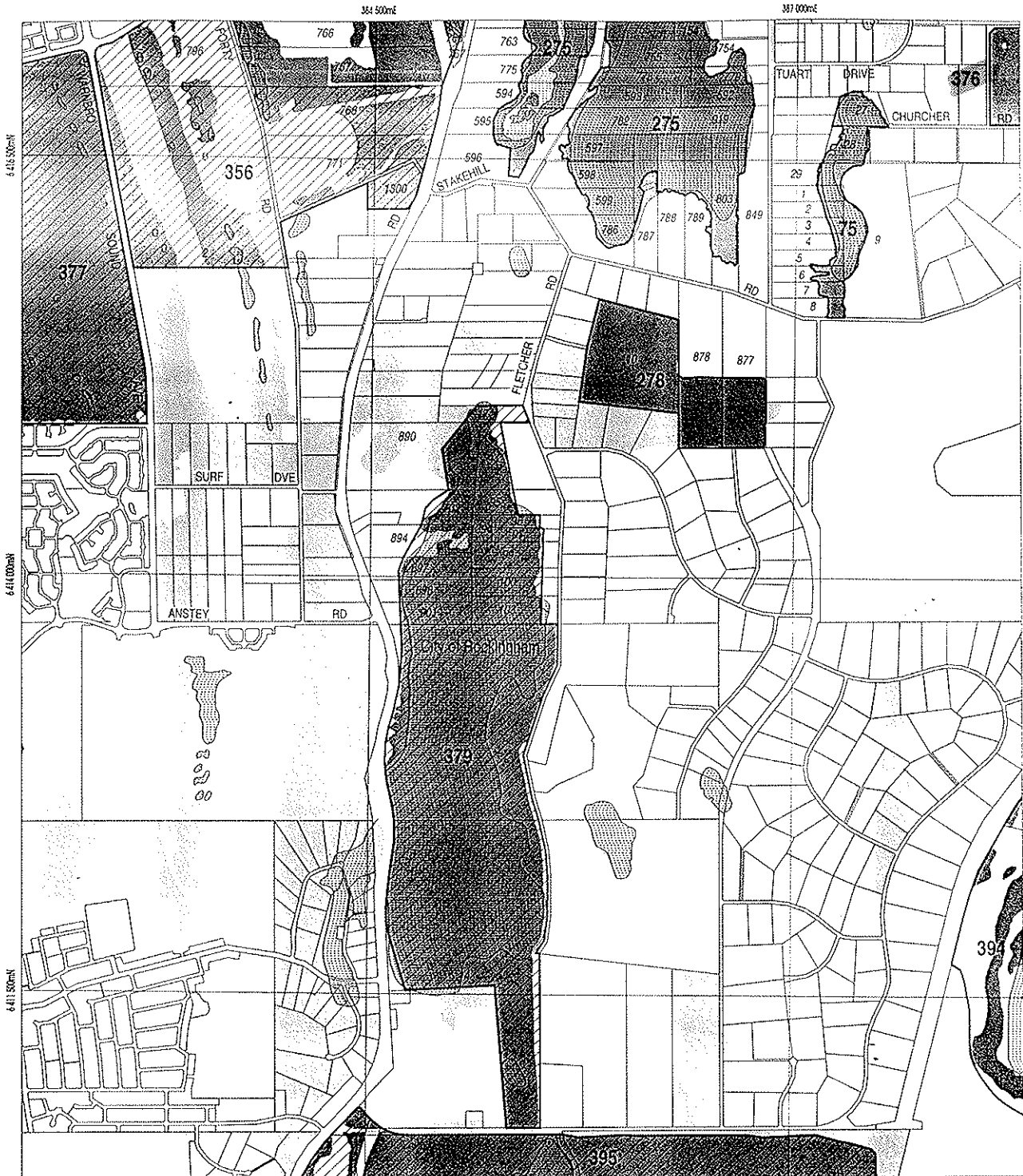
PERTH'S BUSHPLAN MAP INDEX



SCALE



Produced by Project Mapping Section
 Land Information Branch, Ministry for
 Planning, Perth W.A. November 1998
 n1w-map17/environ/bushplan/bushv2_94.dgn
 Cadastral Data supplied by Department
 of Land Administration, W.A.
 Wetlands Data supplied by
 Water and Rivers Commission
 Native Vegetation Extent for Study Area
 supplied by Agriculture Western Australia



LEGEND

472 Bushplan Sites With Regionally Significant Bushland

Other Native Vegetation

Conservation Category Wetlands

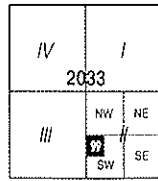
Bushplan Sites With Some Existing Protection

Lot Number, Location Number

Channel Wetlands

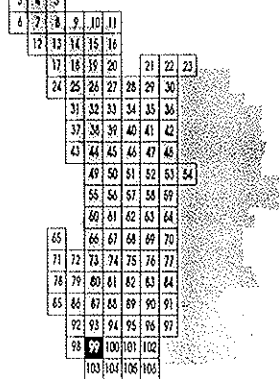
Local Government Boundary

2033 - II SW

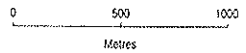


1: 25 000 AMG Reference Grid showing Perth's Bushplan Map Sheet Breakdown

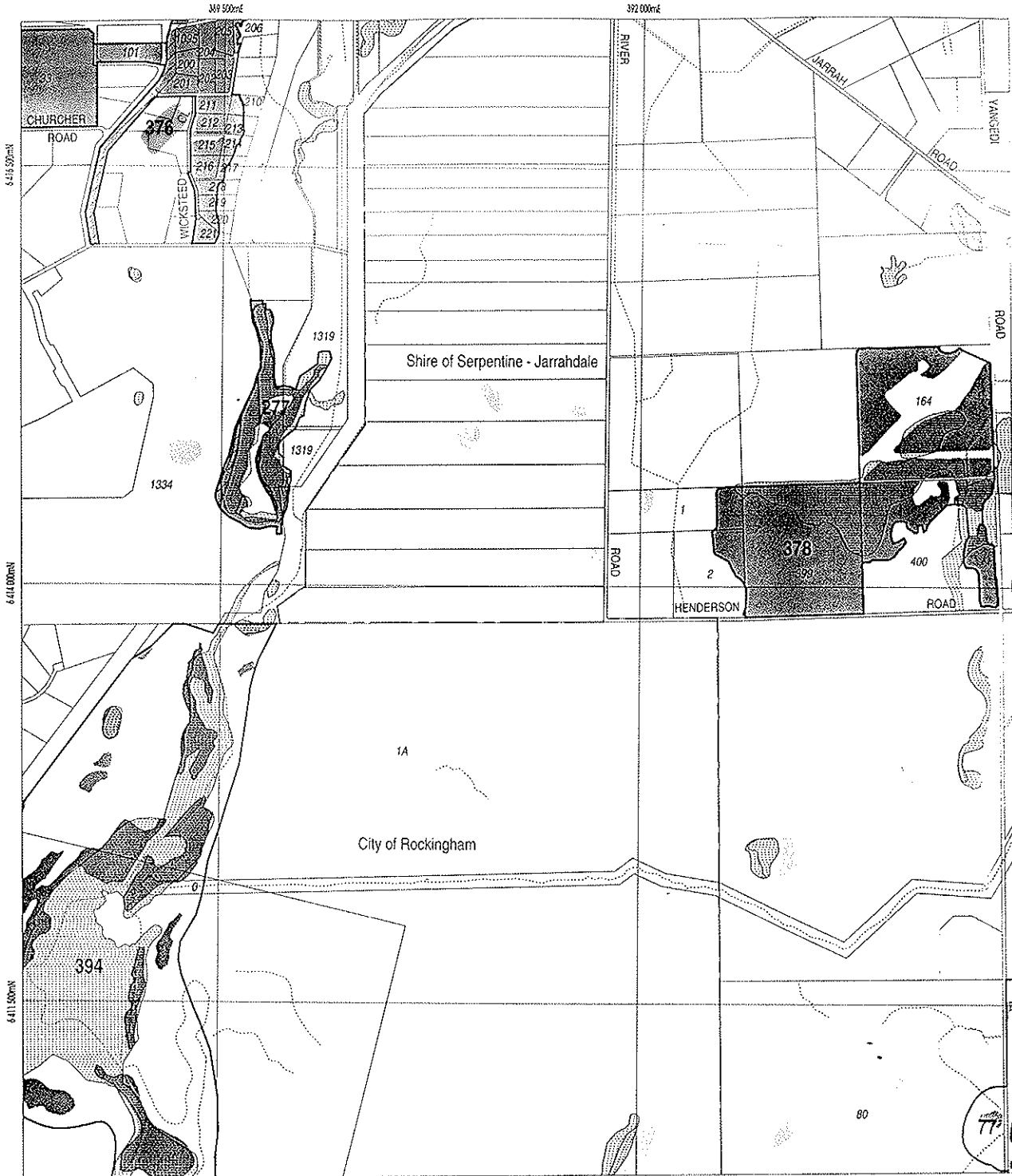
PERTH'S BUSHPLAN MAP INDEX






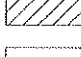
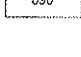


SCALE

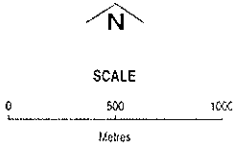
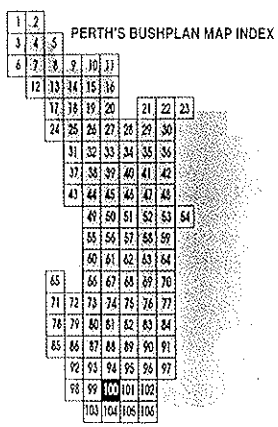
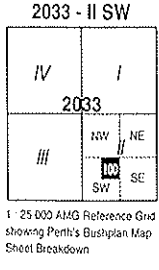


Produced by Project Mapping Section
 Land Information Branch, Ministry for
 Planning, Perth W.A. November 1998
 ntw-map17/viron/bushplan/bushv2_98.dgn
 Cadastral Data supplied by Department
 of Land Administration, W.A.
 Wetlands Data supplied by
 Water and Rivers Commission
 Native Vegetation Extent for Study Area
 supplied by Agriculture Western Australia



LEGEND

-  Bushplan Sites With Regionally Significant Bushland
-  Other Native Vegetation
-  Conservation Category Wetlands
-  Bushplan Sites With Some Existing Protection
-  Lot Number, Location Number
-  Channel Wetlands
-  Local Government Boundary

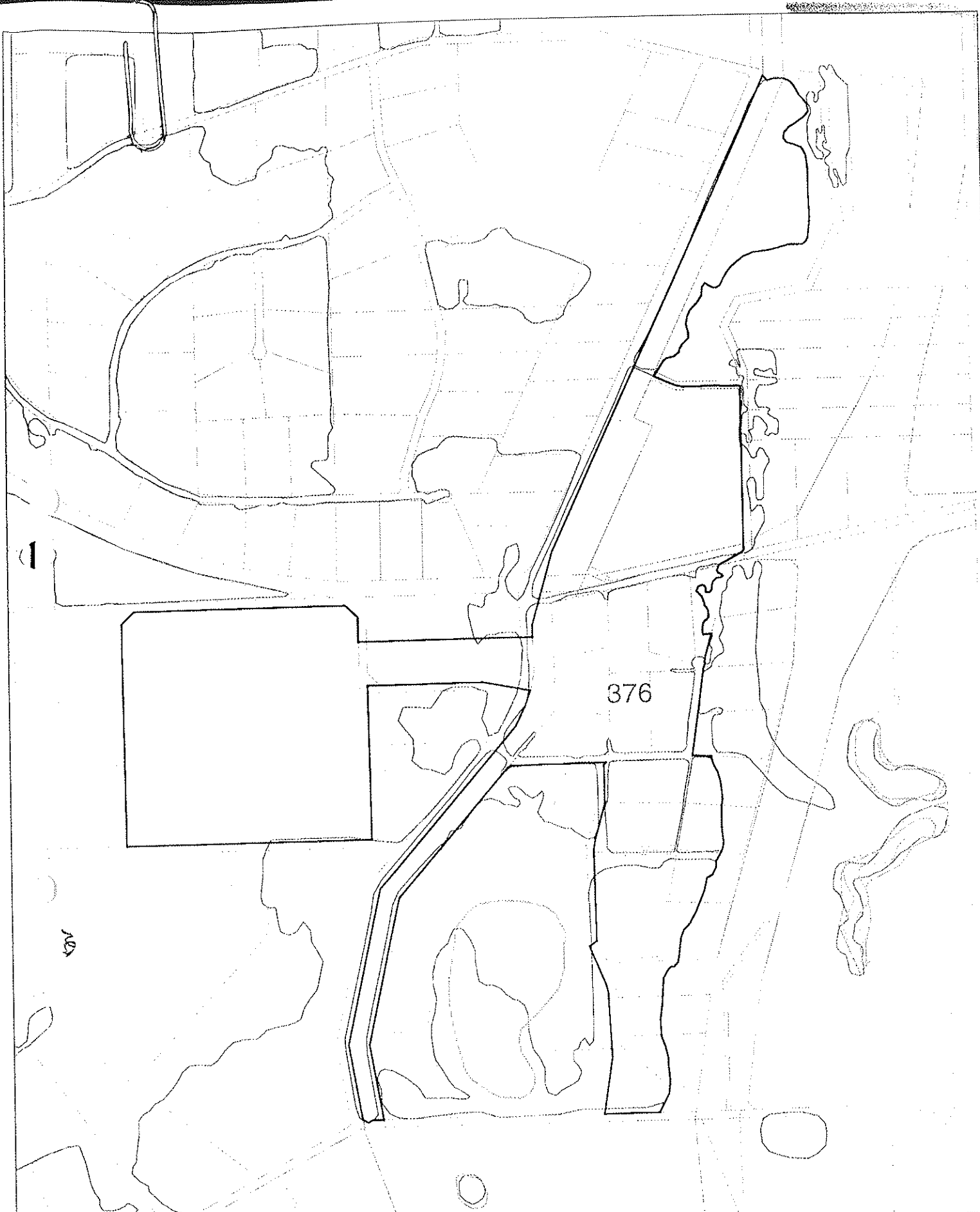


Produced by Project Mapping Section
 Land Information Branch, Ministry for
 Planning, Perth W.A. November 1998
 ntw_map17/environ/bushplan/bushv2_100.dgn

Cadastral Data supplied by Department
 of Land Administration, W.A.

Wetlands Data supplied by
 Water and Rivers Commission

Native Vegetation Extent for Study Area
 supplied by Agriculture Western Australia



BUSHPLAN SITES CORRECTED



WESTERN
AUSTRALIAN
PLANNING
COMMISSION

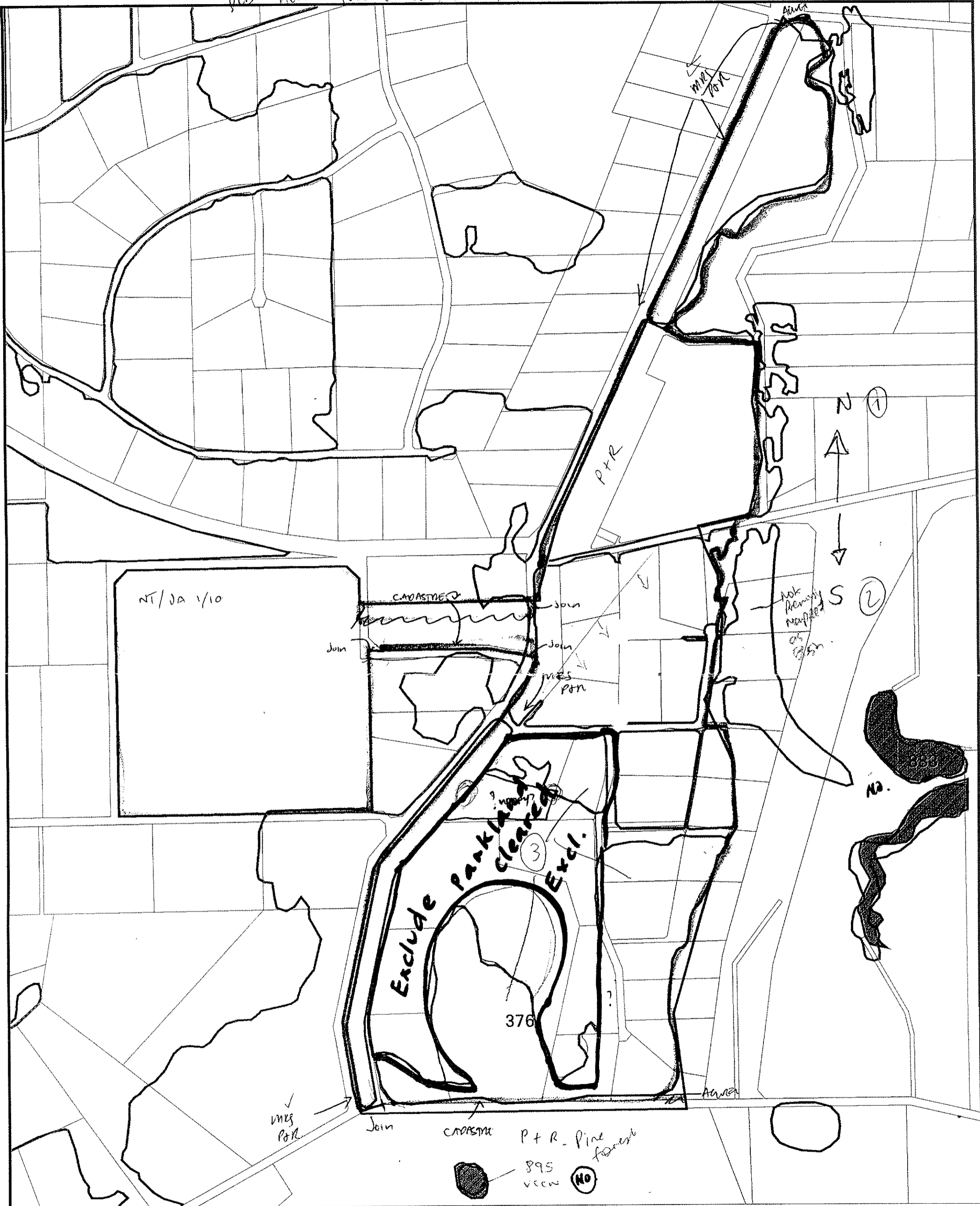


CUSTOMER
FOCUS
WESTERN AUSTRALIA



B BK 28/07

DES Aerial image NOT AVAILABLE OUTSIDE 1 → Plot if UNAVAILABLE PLUDGE



bp site 376

• Landowner notification issues.

- AG VEG 1998 BOUNDARY THEME
- Cadastre
- Bushplan sites refno 1-500 SCP BOUNDARY THEME
- cons category wetlands
- Verified CCWs

Map Ident: plot980603_1	DATE: 03 Jun 98
Prepared By: Andrea Zappacosta	Prepared For:
Scale 1:AUTO	MFP INTERNAL USE ONLY

0 500 m

Cuff

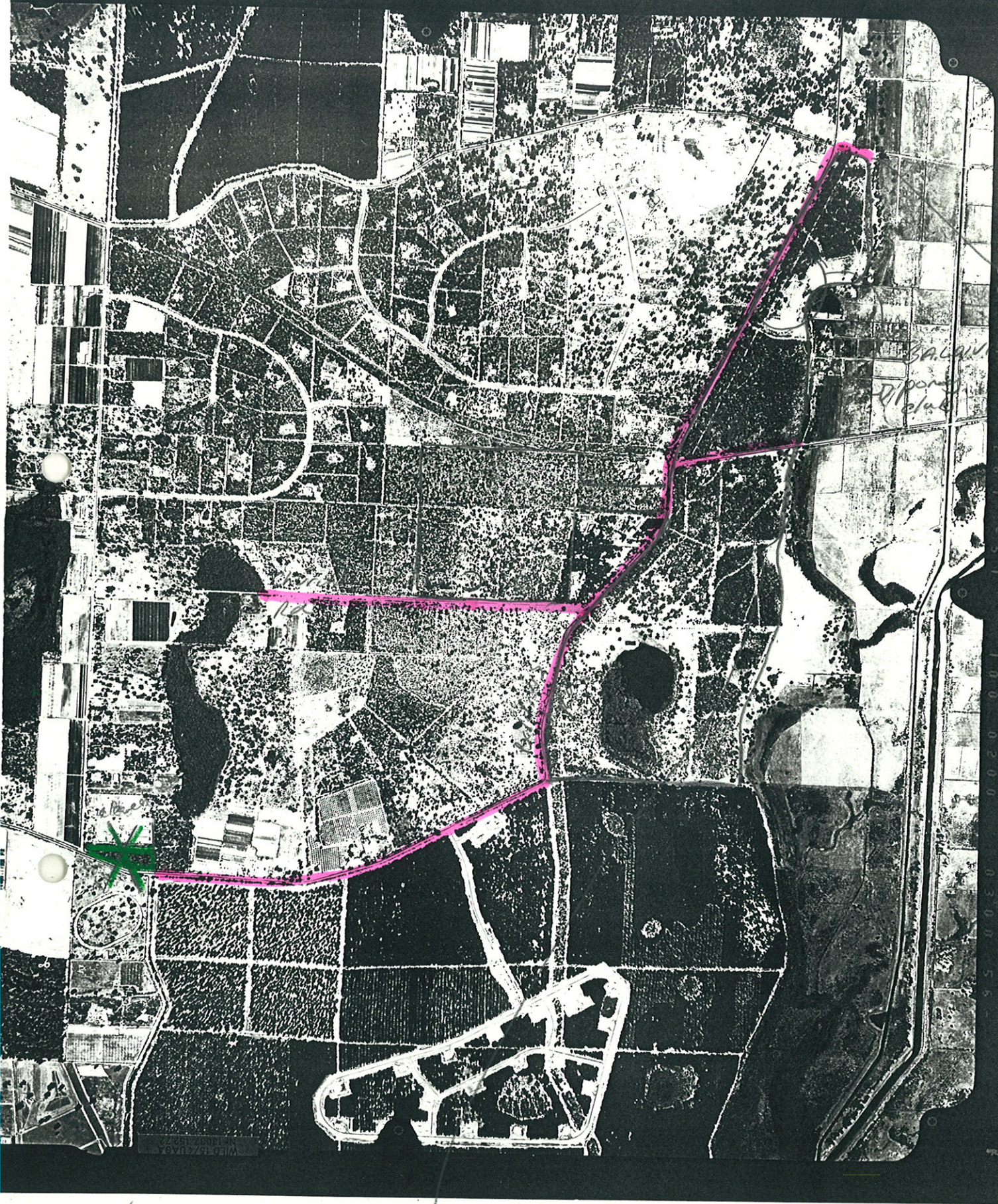
① OK to include as stream

② Closures

③ Serpentine River Complex

A number of 2ha lots need to ascertain veg condition and Regional Status re lot size however, in the meantime suggest cov falls

(1) Minimum lot size



Access 10/28/98 5/2/05

8/2/98

LAND SALE
? Fire break clearing

N
↑ 55376 Baldwin's Rd. Bushland,

1998



N
↑ 55376 Baldi's Rd Bushland,

1998



BUSHLAND AREA BS 396 - Lot 33 SITES YES/NO

DATE 30/6/99 RECORDERS BJK

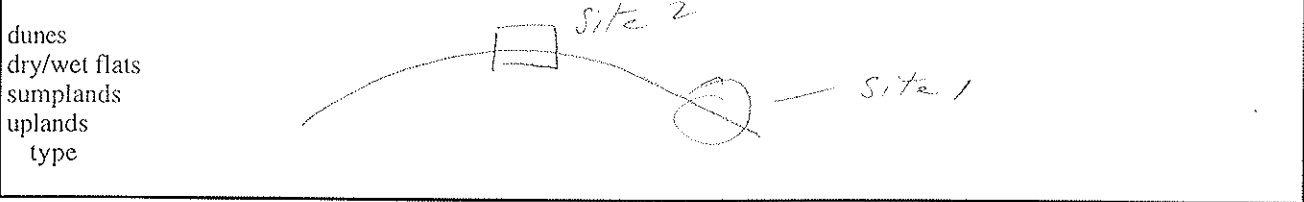
Observations edge transects

COMPARISON NEAR 1507E

Geographic Location Latitude S Longitude E
Reference Map

Photograph Photographer's Name BJK Photo No

Transect of landscape units (draw in transect incorporating features listed and any other relevant unit)



Soil - surface type % area sub -soil

FLORA/VEGETATION (list dominant and significant plants below, see over for vege association descriptions)

Eucalypts	<u>E. calophylla</u>	<u>E. wandoo</u>	<u>E. marginata</u>	<u>E. todtianna</u>	<u>E. rudis</u>
	<u>E. decipiens</u>	<u>E. drummondii</u>	<u>E. haematoxylon</u>	<u>E. lanepoolei</u>	<u>E. gomphocephala</u>
	<u>E. accedens</u>	<u>E. patens</u>	<u>E. laeliae</u>	<u>E. megacarpa</u>	
Sheoaks	<u>Allocasuarina fraserana</u>	<u>Casuarina obesa</u>			
Banksia	<u>B. attenuata</u>	<u>B. menziesii</u>	<u>B. prionotes</u>	<u>B. illicifolia</u>	<u>B. grandis</u> <u>B. littoralis</u>
Melaleuca	<u>M. preissii</u>	<u>M. rhapsiophylla</u>	<u>M. lanceolata</u>	<u>M. cuticularis</u>	
Others	<u>Callitris preissii</u>	<u>Xylocarpus</u>			
Mallees	<u>Eucalypts</u>	<u>E. argutifolia</u>	<u>E. petrensis</u>	<u>E. decurva</u>	<u>E. foecunda</u> <u>E. latens</u>

SIGNIFICANT SPECIES

(see over for vegetation descriptions)

Vegetation Condition - Keighery 1994 (Trudgen 1993) (show range and indicate predominant class)

1 = 'Pristine' (Excellent)
 2 = Excellent (Very Good)
 3 = Very Good (Good) *patches, canopy intact*
 4 = ~~Good~~ (Poor)
 5 = ~~Degraded~~ (Very Poor)
 6 = Completely Degraded

Specific aspects of disturbance

partial clearing

weeds (list): Bare max

selective removal of species: timber cutting mowing fire grazing dieback %area

fire frequency:

'enrichment plantings' (list)

animal impact: horse foxes rabbits cats dogs goats pigs overgrazing by native mammals

soil movement: mining dumping rubbish dumping roadworks

changes in water regimes: flooding drainage watering nutrient influx

Tracks: fire breaks walk trails off road vehicle use animal tracks

Service corridors: SEC Main Roads Water Authority. Telecom

Other

LIFE FORM/HEIGHT CLASS	CANOPY COVER			
	DENSE 70-100%	MID-DENSE 30-70%	SPARSE 10-30%	VERY SPARSE 2-10%
Trees >30m Trees 15-30m Trees 5-15m Trees <5m	Dense Tall Forest Dense Forest Dense Low Forest A Dense Low Forest B	Tall Forest Forest Low Forest A Low Forest B	Tall Woodland Woodland Low Woodland A Low Woodland B	Open Tall Woodland Open Woodland Open Low Woodland A Open Low Woodland B
Mallee tree form Mallee shrub form	Dense Tree Mallee Dense Shrub Mallee	Tree Mallee Shrub Mallee	Open Tree Mallee Open Shrub Mallee	Very Open Tree Mallee Very Open Shrub Mallee
Shrubs >2m Shrubs 1.5-2.0m Shrubs 1.0-1.5m Shrubs 0.5-1.0m Shrubs 0.0-0.5m	Dense Thicket Dense Heath A Dense Heath B Dense Low Heath C Dense Low Heath D	Thicket Heath A Heath B Low Heath C Low Heath D	Scrub Low Scrub A Low Scrub B Dwarf Scrub C Dwarf Scrub D	Open Scrub Open Low Scrub A Open Low Scrub B Open Dwarf Scrub C Open Dwarf Scrub D
Mat plants Hummock Grass Bunch grass >0.5m Bunch grass <0.5m Herbaceous spp.	Dense Mat Plants Dense Hummock Grass Dense Tall Grass Dense Low Grass Dense Herbs	Mat Plants Mid-Dense Hummock Grass Tall Grass Low Grass Herbs	Open Mat Plants Hummock Grass Open Tall Grass Open Low Grass Open Herbs	Very Open Mat Plants Open Hummock Grass Very Open Tall Grass Very Open Low Grass Very Open Herbs
Sedges >0.5m Sedges <0.5m	Dense Tall Sedges Dense Low Sedges	Tall Sedges Low Sedges	Open Tall Sedges Open Low Sedges	Very Open Tall Sedges Very Open Low Sedges
Ferns Mosses, liverwort	Dense Ferns Dense Mosses	Ferns Mosses	Open Ferns Open Mosses	Very Open Ferns Very Open Mosses

VEGETATION (describe each unit of vegetation using dominants and life form/height class and canopy cover according to the Muir codes above)

Site 1 - Mid W boundary adj firebreak
 low mallee/bank manna/bank oak low woodland over
 10-30% low thick heath over Mesa pseudo 10-30
 Sedges; Herbs 10-30 Hyp glab + others, low mallee
 grass
 Adj. Tall mallee
 180m hi, 60m low, low divar, low hi, low banks, low trees
 Kunia are yeast, low mallee, bank, dwarf, Mac reid
 Stylid plant, Tetraol,
 COND: Good

Site 2 - Top slope.
 Tall open woodland over bank manna/bank oak
 low woodland over Mesa pul 2-10%
 clumped low over 2-40% thick heath low
 Mesa pul 2-10, low mallee/length of Herbs 2-10%
 grasses, bank manna

Fauna comments

Adjacent bushland (refer to aerial photograph)

DEP SYSTEM 6 UPDATE SUBMISSION SURVEY SHEET

B.J. KEIGHERY 9/95

BUSHLAND AREA BS 376 SITES YES/NO

DATE 9/11/98 RECORDERS BJK, CK

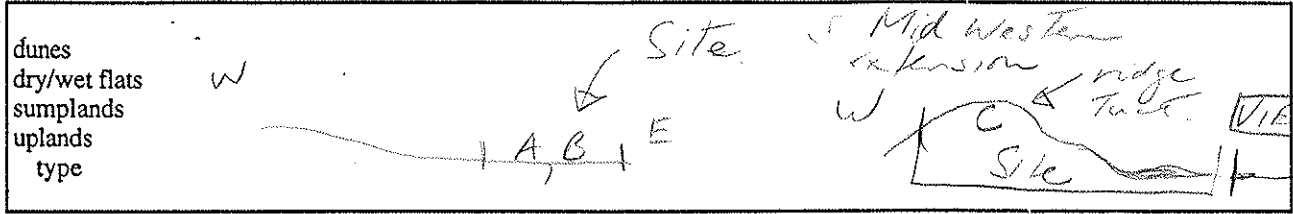
Observations edge transects

Geographic Location Latitude _____ S Longitude _____ E

Reference Map _____

Photograph _____ Photographer's Name CK Photo No. 30

Transect of landscape units



Soil grey sand over yellow sand Colour _____
Exposed rock type _____ % area _____

VEGETATION

Eucalypts	<u>E. calophylla</u>	<u>E. wandoo</u>	<u>E. marginata</u>	<u>E. todtianna</u>	<u>E. rudis</u>
	<u>E. decipiens</u>	<u>E. drummondii</u>	<u>E. haematoxylon</u>	<u>E. lanepolei</u>	<u>E. gomphocephala</u>
	<u>E. accedens</u>	<u>E. patens</u>	<u>E. laeliae</u>	<u>E. megacarpa</u>	
Sheoaks	<u>Allocasuarina fraserana</u>		<u>Casuarina obesa</u>		
Banksia	<u>B. attenuata</u>	<u>B. menziesii</u>	<u>B. prionotes</u>	<u>B. illicifolia</u>	<u>B. grandis</u>
Melaleuca	<u>M. preissii</u>	<u>M. raphiophylla</u>	<u>M. lanceolata</u>	<u>M. cuticularis</u>	
Others	<u>Callitris preissii.</u> <u>Y/b. occid.</u>				
Mallees	Eucalypts	<u>E. argutifolia</u>	<u>E. petrensis</u>	<u>E. decurva</u>	<u>E. foecunda</u> <u>E. latens</u>

Peppercorn near stopping point Reserve planted

Vegetation Condition - Keighery 1994 (Trudgen 1993)

1 = 'Pristine' (Excellent)	
2 = Excellent (Very Good)	
3 = Very Good (Good)	
4 = Good (Poor)	
5 = Degraded (Very Poor)	
6 = Completely Degraded	

Valley grass to 70% in northern section, near Pony Club near Karup NR!

partial clearing	
weeds	
selective removal of species	timber cutting mowing % dieback
fire frequency	
'enrichment plantings'	
animal impact	horse foxes rabbits cats dogs goats pigs overgrazing by native mammals
soil movement	mining dumping rubbish dumping roadworks
changes in water regimes	flooding drainage watering nutrient influx
Tracks	fire breaks walk trails off road vehicle use animal tracks
Service corridors	SEC Main Roads Water Authority. Telecom
Other	

LIFE FORM/HEIGHT CLASS	CANOPY COVER			
	DENSE 70-100%	MID-DENSE 30-70%	SPARSE 10-30%	VERY SPARSE 2-10%
Trees >30m Trees 13-30m Trees 5-13m Trees <5m	Dense Tall Forest Dense Forest Dense Low Forest A Dense Low Forest B	Tall Forest Forest Low Forest A Low Forest B	Tall Woodland Woodland Low Woodland A Low Woodland B	Open Tall Woodland Open Woodland Open Low Woodland A Open Low Woodland B
Mallee tree form Mallee shrub form	Dense Tree Mallee Dense Shrub Mallee	Tree Mallee Shrub Mallee	Open Tree Mallee Open Shrub Mallee	Very Open Tree Mallee Very Open Shrub Mallee
Shrubs >2m Shrubs 1.5-2.0m Shrubs 1.0-1.3m Shrubs 0.5-1.0m Shrubs 0.0-0.5m	Dense Thicket Dense Heath A Dense Heath B Dense Low Heath C Dense Low Heath D	Thicket Heath A Heath B Low Heath C Low Heath D	Scrub Low Scrub A Low Scrub B Dwarf Scrub C Dwarf Scrub D	Open Scrub Open Low Scrub A Open Low Scrub B Open Dwarf Scrub C Open Dwarf Scrub D
Mat plants Hummock Grass Bunch grass >0.5m Bunch grass <0.5m Herbaceous spp.	Dense Mat Plants Dense Hummock Grass Dense Tall Grass Dense Low Grass Dense Herbs	Mat Plants Mid-Dense Hummock Grass Tall Grass Low Grass Herbs	Open Mat Plants Hummock Grass Open Tall Grass Open Low Grass Open Herbs	Very Open Mat Plants Open Hummock Grass Very Open Tall Grass Very Open Low Grass Very Open Herbs
Sedges >0.5m Sedges <0.5m	Dense Tall Sedges Dense Low Sedges	Tall Sedges Low Sedges	Open Tall Sedges Open Low Sedges	Very Open Tall Sedges Very Open Low Sedges
Ferns Mosses, Liverwort	Dense Ferns Dense Mosses	Ferns Mosses	Open Ferns Open Mosses	Very Open Ferns Very Open Mosses

A. Scattered Jarrah over 30-70%, Mixed
(see over for tree rot Marri) over
22m clumps to 5let Kun. etc. over 1.5-2m clumps
to scattered Ac. pul over scattered natives, 30-70%
Ehr. only. CONDITION Degraded to ? Good.

To south to Karnup towards Koserve
Marri increases, scattered Zamia

B. Scattered Marri to 30-70% Marri
over bank off bank near All. trees
30-70% over Hibb Nyp 1m, 10-30% over
30-70% Meso. pseudo
COND: Excellent scattered Vallet, some loss
Jarrah (? fine ? dieback)
Planting of scattered. Tyl. occ, Kun etc, Temp net.
Patches Kun. etc, Tyl. over.

C. Young scattered Jarrah, Marri over bank off
bank near All. trees, Tyl. over 30-70% <10m over
Kun etc >2m 30-70% over Hibb Nyp 1m 10-30%
over Meso pseudo 10-30%
COND: Very Good to Good ? cleared regrowth, all
young trees. Upslope understory cleared +
grazed to Degraded to Good
? ? ? E edge + around wetland to W
(upland scattered in pasture), off pins to E
[? ? ? extend through landscape protection to
Spurhill Swamp, good example landscape]

Flora comments

Fauna comments

Adjacent bushland

VEGETATION (describe each unit of vegetation using dominants and life form/height class and canopy cover according to the Muir/Kesler codes above)

E Line of Enc. reads 770st. in places over
Mel shrubs 770% < 10m.
to W dominated by Kun. shr. & tall
(? clearing / diobad / water table changes)

Wetland - day 9/1/98
- no inspection of soil
but Mel shrubs by interpretation to S

Veg. in E block all as described in sites,
variable conditions (interpret from sites
and textures). Road reserve to

Fauna comments

Adjacent bushland (refer to aerial photograph)

OTHER COMMENTS



41
BS 376
PB175

CITY OF ROCKINGHAM

Civic Boulevard, Rockingham
Western Australia

OUR REF: TP11-2-44 PM.mw
YOUR REF:

ENQUIRIES TO: Mr Monks

23rd April 1999

Manager
Environmental Planning Branch
Ministry for Planning
469 Wellington Street
PERTH WA 6000

MINISTRY FOR
PLANNING
27 APR 1999
805-2-1-32PH2
FILE

Dear Sir

Re: Submission on the Draft Perth's Bushplan

I refer to your letter dated the 27th November 1998 inviting comment on the draft Perth's Bushplan. The report and plans were presented to Council at its ordinary Meeting held on the 23rd March 1999, where it was resolved to submit the following comments, which are divided into four sections:-

1. Principles and Recommendations.
2. Comments on specific sites nominated in the City of Rockingham.
3. General Comments.
4. Implementation.

1. PRINCIPLES AND RECOMMENDATIONS

The retention of regionally and locally significant bushland is an important measure that has the support of the City of Rockingham, and the draft Perth Bushplan provides important information and recommendations to achieve this objective.

The methodology used to establish which sites are of regional significance is clear, once the reporting structure of the various volumes of the documents is understood.

Council has attended a number of briefing sessions organised by the Ministry for Planning and WAMA and these sessions have played a very important role in understanding both the implications of the recommendations of Perth Bushplan, and the views of the various parties that are affected by the Report.

SUBMISSION NO. 501

(iv) Bushplan Site No. 349 - Leda and Adjacent Bushland, Leda

A portion of this Bushplan site is contained within the City, south of Millar Road, and comprises the regional landfill site. A portion also affects the adjacent site designated for cemetery purposes. Council is making a separate submission as the landowner of the Millar Road Regional Landfill Facility, requesting the deletion of the majority of the Bushplan designation over this site.

A negotiated planning solution for the cemetery site may be able to ensure the retention of the Karrakatta vegetation complex on this site.

(v) Bushplan Site No. 3 - Lake Cooloongup, Lake Walyungup and Adjacent Bushland, Hillman to Port Kennedy

This site reflects the Rockingham Lakes Regional Park, for which CALM is currently preparing a Management Plan. This Management Plan will take into account Council's objectives for the Larkhill Regional Sport and Recreation area. In this regard, Council's feasibility and planning studies have to date acknowledged the existence of, and included the relevant Bushplan site.

(vi) Bushplan Site No. 3 - Lake Richmond, Rockingham

The inclusion of this site in Perth Bushplan is supported. The MRS reserve boundary of this site will need to be amended in line with the recommendations of the Consultative Environmental Review for the land area adjacent to the lake, prepared by the Allied Land Co. as the proponent of the adjacent residential development.

(vii) Bushplan Site No. 3 - Baldivis Road Bushland, Baldivis

Portion of this site is zoned 'Rural', however, the southern portion is part of the Beenyup Pools Special Rural Estate. Town Planning Scheme provisions are already in place which allow Council to consider agricultural uses on these properties. Although building envelopes are in place, protection of remnant bushland cannot be guaranteed under the current Scheme provisions.

Additionally, the western portion of the site is located on a Water Corporation site which is designated for a future reservoir. This portion may need to be reconsidered as a Bushplan site.

PB175

Lot 33 Bushplan Site 376 - Field Inspection 30/6/99

The vegetation of this lot is consistent with the site description containing woodlands typical of the Karrakatta Central and South complex and floristic community type 28. The lot contains *Eucalyptus marginata*, *Banksia attenuata* and *B. menziesii* Low Woodland. At the top of the slope (lot encompasses a hill top and its slopes) and on the eastern slope Tuart forms an overstorey. The vegetation appears to have been impacted by past grazing and partial clearing and is generally in Good Condition.

Discussion

While not in the best condition, block is typical of a complex that is poorly conserved in Bushplan. This would not be considered top priority area on vegetation condition but this is fairly typical of the condition of this complex in the area.

Lot 33 Bushplan Site 376 - Field
Inspection 30/6/99

The vegetation of this lot is consistent with the site description containing woodlands typical of the Karra-katta Central and South complex and floristic community type 28. The lot contains *Eucalyptus marginata*, *Banksia attenuata* and *B. menziesii* Low Woodland. At the top of the slope (lot encompasses a hill top and its slopes) and on the eastern slope *Quercus* forms an overstorey.

The vegetation appears to have been impacted by past grazing and partial clearing and is generally in good condition.

Discussion

While not in the best condition, block is typical of a complex that is poorly conserved in bushplan. This would not be considered top priority area on vegetation condition but this is fairly typical of the condition of this complex in the area.