



nal Park

YANCHEP

CARABOODA

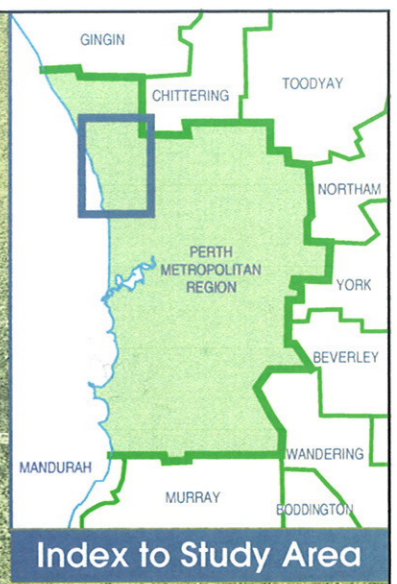
PINJAR

NOWERGUP

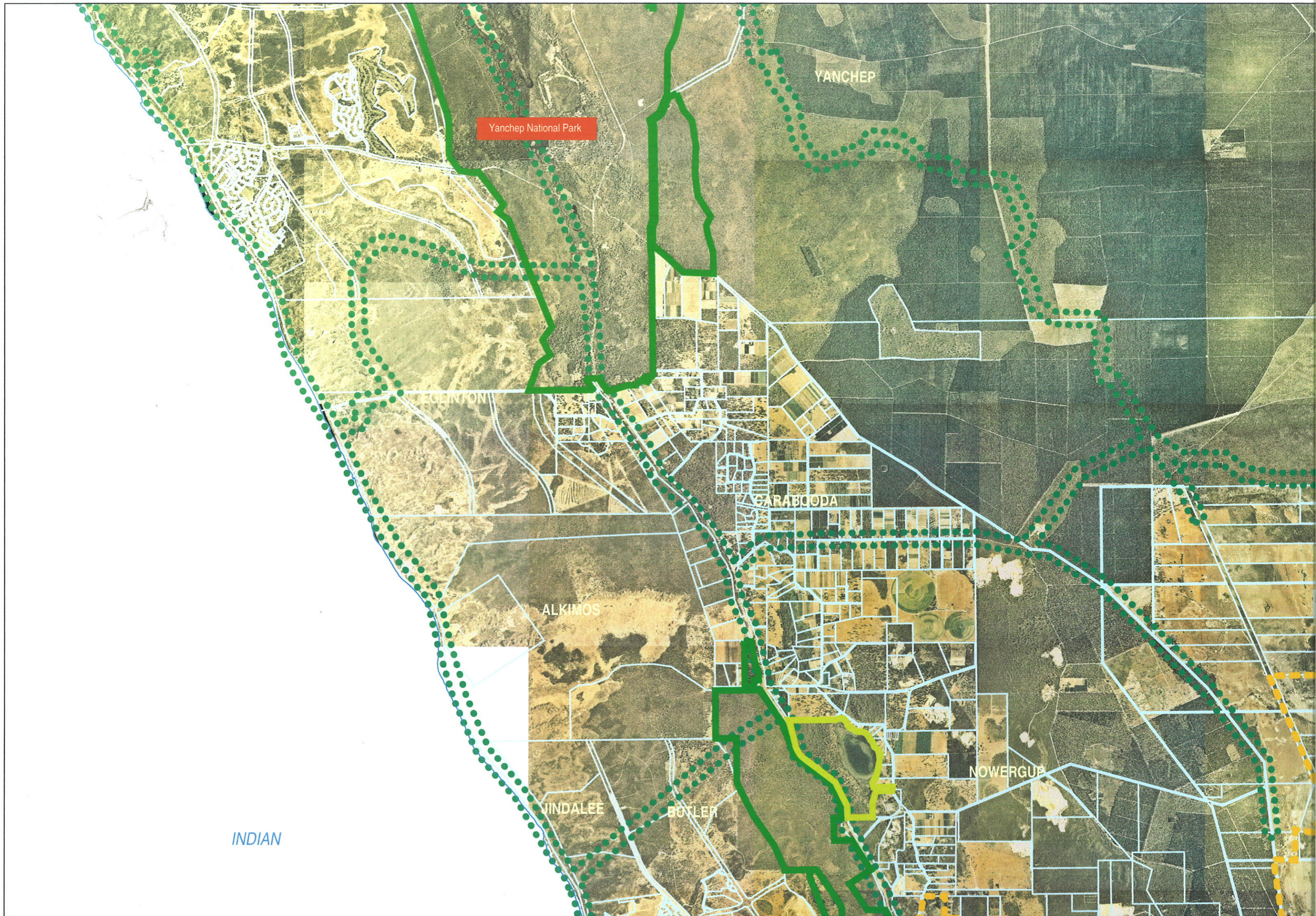
BULLKIMOS

BINDALEE

BUTLER



Index to Study Area



Yanchep National Park

YANCHEP

EGLINTON

CARABOODA

ALKIMOS

NOWERGUB

JINDALEE

BUTLER

INDIAN



GINNNS BROS

RIDGEWOOD

NEERABUP

CLARKSON

TAMBORA

Neerabup National Park (green boundary)

CARBAMAR

Larger Bushland Area

TAMALA PARK

MARGINIUP

BURNS

JARRING

Part Lot 52

ASHEY

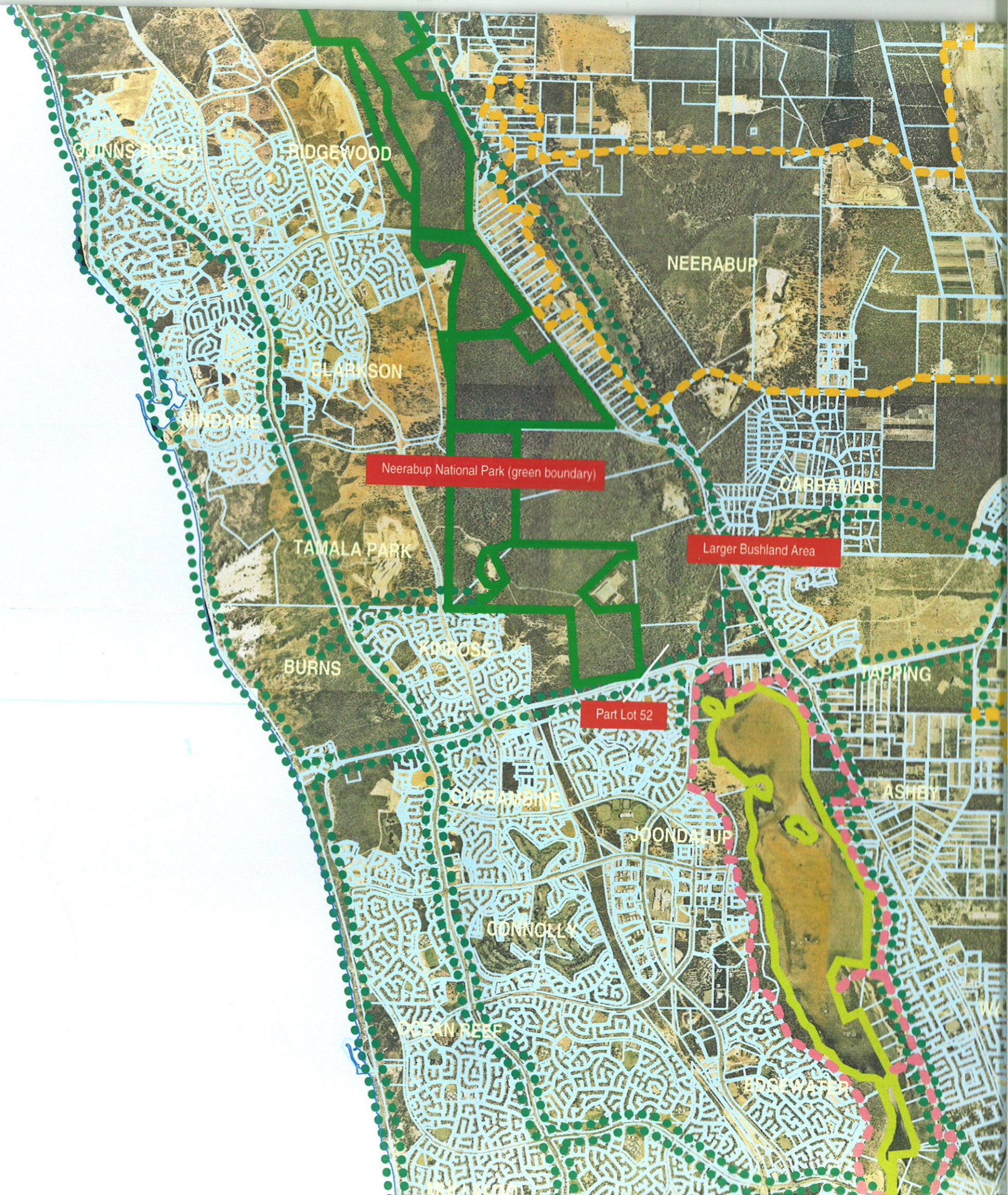
SURREMBINE

JOONDAUP

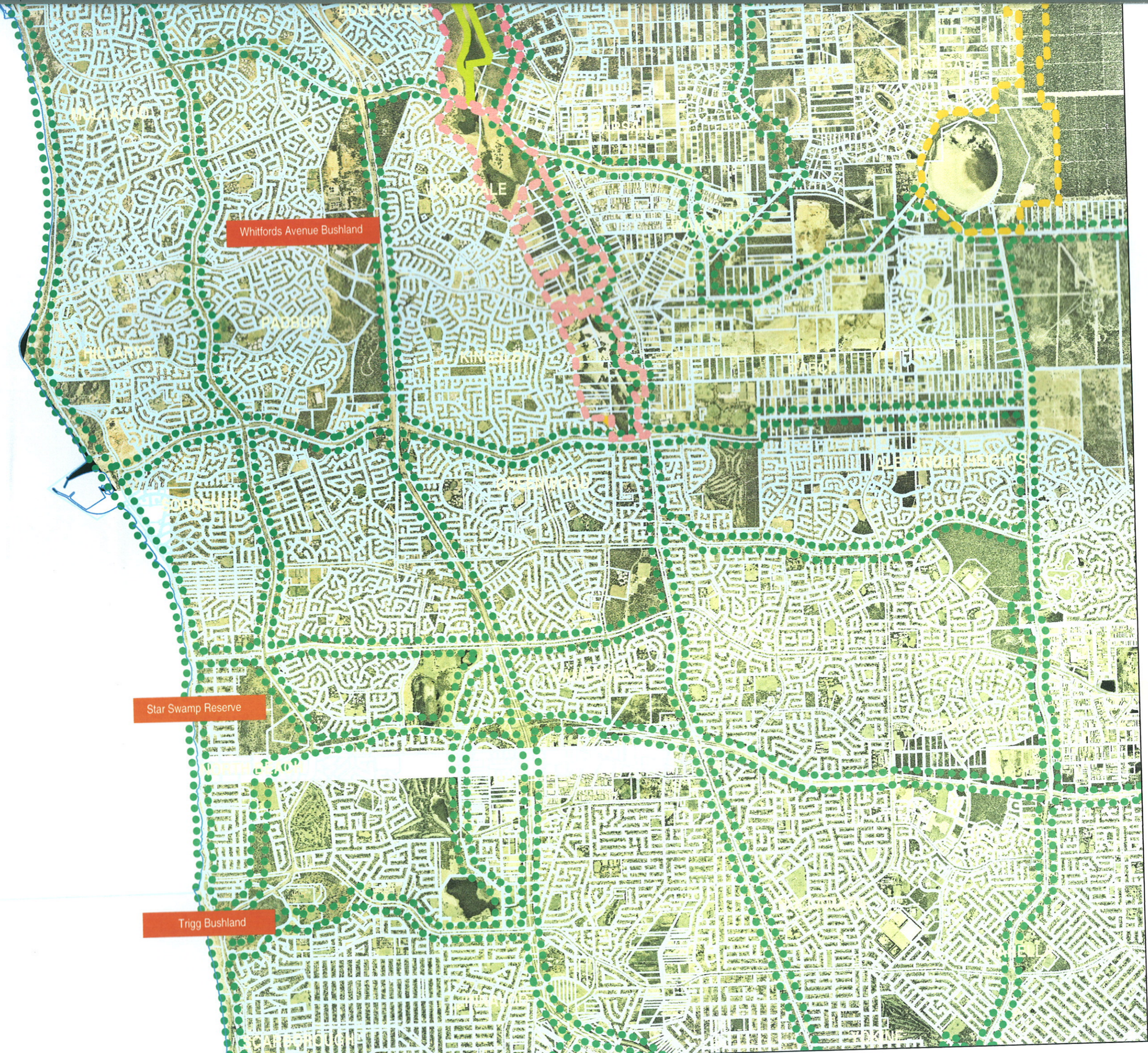
JANDABUP

CONNOLEY

ROSEVALE



2



Whitfords Avenue Bushland

Star Swamp Reserve

Trigg Bushland

st  
tan

GDA



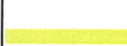



erth,

A

OCEAN

MAP 1a: Part Lot 52 and its location as part of a larger bushland area in the north west Perth Metropolitan Region on the Swan Coastal Plain: the north west Perth Metropolitan Region from Trigg Bushland to the southern end of Yanchep National Park (1998 aerial photography)

LEGEND

-  Perth's Greenways (Tingay 1998)
-  National Park (Secure Reserve, IUCN 1991)
-  Nature Reserve (Secure Reserve, IUCN 1991)
-  Proposed Regional Parks (Boundary as depicted in June 1994, NOT verified)
-  Yellagonga Regional Park (Boundary as depicted in June 1994 considered a secure reserve)
-  Scheme Boundary



Produced by Project Mapping Section, Department of Planning and Infrastructure, Perth, W.A. Nov, 2003  
ntw-map17\environ\pmr\bushplan\pub00\vol\_final\misc\trandos\trandos.dgn  
1:25000 1998 Aerial Imagery supplied by Department of Land Administration, W.A. and has a positional accuracy of + or - 10m

SUPREME COURT CASE - WAPC Vs TRANDOS

1998 AERIAL PHOTOGRAPHY NORTH WEST METROPOLITAN AREA



WILD 1574 UABA  
Nr 13037 152.72

000071

- 5022 - 1 268 - 57 100 0200 0290 56 -

000000 003145 210125 60 1906