



System 6 Update - Floristic Community Type Mapping Information DRAFT ONLY

AREA INFORMATION

System 6 Area (C or M) or Update Area (Update) *CB*

Conservation Area	<i>Wahing Management Priority Area</i>
Nature Reserve	
Reserve No	
National Park	
Reserve No	
Local Government	
Reserve No	
Other	
Proposed Conservation Areas	
Local Government	
Reserve No	
Other	

Conservation Area

Nature Reserve	
Reserve No	
National Park	
Reserve No	
Local Government	
Reserve No	
Other	

AREA

Total Area	hectares
Completely Degraded	hectares
comments:	

AREA MAPPED FLORISTIC UNITS

Boundaries: System6 CALM

Units	Site (Condition)	Code	Bound	Area (ha)	Area(ha)

Boundaries determined by use of

aerial photograph	
orthophoto	
vegetation map	
soil map	

**FOR INTERNAL USE ONLY from Gibson *et.al* 1994 & EA Griffin 1994** 1  
CONTACT DR N. GIBSON CALM WOODVALE OR GREG BEESTON DEPT AGRICULTURE for further information.

Flora list for C13 Wabling MPA 15.3 (extracted from Swan Coastal Plain database, Milt01, 04, Water01, Wabl01-04 and from Northern Sandplains database NSI OYR02, 9/1/95).

**Department of Environmental Protection System 6 Update: Site Based Flora List for C13 Wabling Management Priority Area (MPA 15.3)**

(extracted from the CALM Swan Coastal Plain database Milt01, 04, Water01, Wabl01-04 and from the Dept of Agriculture Northern Sandplains database NSI OYR02, 9/1/95)

Amaranthaceae

*Ptilotus manglesii*

Anthericaceae

*Thysanotus arenarius*

*Thysanotus* sp. *manglesianus/patersonii* scps

*Thysanotus sparteus*

*Thysanotus triandrus*

*Tricoryne elatior*

Apiaceae

*Daucus glochidiatus*

*Homalosciadium homalocarpum*

*Hydrocotyle hispidula*

*Schoenolaena juncea*

*Trachymene pilosa*

*Xanthosia huegelii*

Aponogetonaceae

*Aponogeton hexatepalus*

Asteraceae

*Asteridea pulverulenta*

*Gnaphalium sphaericum*

*Hyalosperma cotula*

\* *Hypochoeris glabra*

*Lagenifera huegelii*

*Millotia tenuifolia*

*Olearia elaeophila*

*Podotheca angustifolia*

*Podotheca gnaphalioides*

*Quinetia urvillei*

*Siloxerus humifusus*

\* *Sonchus oleraceus*

\* *Ursinia anthemoides*

*Waitzia citrina*

Brassicaceae

\* *Heliophila pusilla*

Campanulaceae

\* *Wahlenbergia capensis*

Flora list for C13 Wabling MPA 15.3 (extracted from Swan Coastal Plain database, Milt01, 04, Water01,  
Wabl01-04 and from Northern Sandplains database NSI OYR02, 9/1/95).

*Wahlenbergia preissii*

Caryophyllaceae

- \* *Cerastium glomeratum*
- \* *Stellaria media*

Centrolepidaceae

*Centrolepis aristata*  
*Centrolepis drummondiana*

Chenopodiaceae

*Rhagodia baccata* subsp. *baccata*

Colchicaceae

*Burchardia umbellata*  
*Wurmbea monantha*

Crassulaceae

*Crassula colorata*

Cyperaceae

*Baumea juncea*  
*Isolepis marginata*  
*Lepidosperma* "coastal terete" scps (BJK&NG 231)  
*Lepidosperma angustatum*  
*Mesomelaena pseudostygia*  
*Schoenus brevisetis*  
*Schoenus clandestinus*  
*Schoenus curvifolius*

Dasypogonaceae

*Calectasia cyanea*  
*Lomandra caespitosa*  
*Lomandra hermaphrodita*  
*Lomandra preissii*  
*Lomandra sericea*  
*Lomandra suaveolens*

Dilleniaceae

*Hibbertia huegelii*  
*Hibbertia hypericoides*  
*Hibbertia racemosa*  
*Hibbertia subvaginata*

Droseraceae

*Drosera erythrorhiza*

Flora list for C13 Wabling MPA 15.3 (extracted from Swan Coastal Plain database, Milt01, 04, Water01, Wabl01-04 and from Northern Sandplains database NSI OYR02, 9/1/95).

*Drosera macrantha*  
*Drosera menziesii* subsp. *penicillaris*  
*Drosera paleacea* scps subsp. *paleacea*  
*Drosera* sp. scps

Epacridaceae

*Andersonia lehmanniana*  
*Conostephium pendulum*  
*Leucopogon parviflorus*  
*Leucopogon polymorphus*  
*Leucopogon propinquus*  
*Lysinema ciliatum*

Euphorbiaceae

*Phyllanthus calycinus*  
*Poranthera microphylla*

Geraniaceae

\* *Erodium botrys*  
*Geranium retrorsum*  
*Pelargonium littorale*

Goodeniaceae

*Scaevola thesioides*

Haemodoraceae

*Anigozanthos humilis*  
*Conostylis aurea*  
*Conostylis candicans*  
*Conostylis juncea*  
*Conostylis setigera*  
*Haemodorum laxum*  
*Haemodorum paniculatum*  
*Haemodorum* sp. scps  
*Phlebocarya ciliata*

Haloragaceae

*Gonocarpus pithyoides*

Iridaceae

\* *Gladiolus* sp. scps  
*Patersonia occidentalis*

Juncaginaceae

*Triglochin procerum*  
*Triglochin* sp. A FPR (BJK&NG 095)

Flora list for C13 Wabling MPA 15.3 (extracted from Swan Coastal Plain database, Milt01, 04, Water01,  
Wabl01-04 and from Northern Sandplains database NSI OYR02, 9/1/95).

Lamiaceae

Hemigenia barbata

Lauraceae

Cassytha glabella  
Cassytha racemosa

Lobeliaceae

Lobelia heterophylla

Loganiaceae

Mitrasacme paradoxa

Loranthaceae

Nuytsia floribunda

Mimosaceae

Acacia huegelii  
Acacia lasiocarpa  
Acacia pulchella  
Acacia rostellifera  
Acacia stenoptera

Myrtaceae

Astartea aff. fascicularis sthest  
Beaufortia elegans  
Calothamnus sanguineus  
Calytrix angulata  
Calytrix flavescens  
Eremaea asterocarpa subsp. asterocarpa  
Eremaea pauciflora subsp. pauciflora scps  
Eucalyptus decipiens  
Eucalyptus foecunda  
Eucalyptus todtiana  
Hypocalymma angustifolium  
Leptospermum spinescens  
Melaleuca acerosa  
Melaleuca aff. acerosa (gjk 11242) scps map  
Melaleuca aff. trichophylla scps  
Melaleuca huegelii  
Melaleuca lateritia  
Melaleuca leptoclada  
Pericalymma ellipticum  
Scholtzia involucrata

Orchidaceae

Caladenia flava

Flora list for C13 Wabling MPA 15.3 (extracted from Swan Coastal Plain database, Mill01, 04, Water01,  
Wabl01-04 and from Northern Sandplains database NSI OYR02, 9/1/95).

Caladenia sp. scps  
Cyrstostylis robusta  
Eriochilus dilatatus  
Leporella fimbriata  
Lyperanthus nigricans  
Prasophyllum sp. scps  
Pterostylis aff. nana scps  
Pterostylis sanguinea  
Pterostylis vittata

Oxalidaceae

Oxalis perennans

Papilionaceae

Bossiaea eriocarpa  
Gompholobium tomentosum  
Isotropis cuneifolia  
Jacksonia furcellata  
Jacksonia sternbergiana  
Jacksonia stricta  
Kennedia prostrata  
\* Lotus suaveolens  
Nemcia reticulata  
Templetonia retusa

Phormiaceae

Dianella revoluta

Poaceae

\* Aira caryophyllea  
\* Aira sp. scps  
Amphipogon turbinatus  
\* Briza maxima  
\* Briza minor  
Cynodon dactylon  
Danthonia occidentalis  
Microlaena stipoides  
\* Paspalum dilatatum  
Poa drummondiana  
Stipa compressa  
Stipa flavescens  
\* Vulpia bromoides  
\* Vulpia myuros  
\* Vulpia sp. scps

Polygalaceae

Comesperma confertum  
Comesperma integerrimum  
Comesperma volubile

Flora list for C13 Wabling MPA 15.3 (extracted from Swan Coastal Plain database, Milt01, 04, Water01,  
Wabi01-04 and from Northern Sandplains database NSI OYR02, 9/1/95).

Portulacaceae

Calandrinia brevipedata  
Calandrinia sp. scps

Primulaceae

\* Anagallis arvensis

Proteaceae

Adenanthos cygnorum  
Banksia attenuata  
Banksia grandis  
Banksia ilicifolia  
Banksia littoralis  
Banksia menziesii  
Banksia prionotes  
Conospermum canaliculatum subsp. canaliculatum MS  
Conospermum stoechadis  
Dryandra nivea  
Dryandra sessilis  
Grevillea thelemanniana subsp. preissii  
Hakea costata  
Hakea lissocarpha  
Hakea prostrata  
Hakea ruscifolia  
Hakea trifurcata  
Hakea varia  
Persoonia comata  
Petrophile brevifolia  
Petrophile linearis  
Petrophile macrostachya  
Petrophile seminuda  
Petrophile serruriae  
Stirlingia latifolia  
Synaphea petiolaris

Restionaceae

Alexgeorgea nitens  
Hypolaena exsulca  
Lepidobolus preissianus  
Leptocarpus aff. crebriculmis scps (BJK&NG 236)  
Lepyrodia glauca  
Loxocarya flexuosa  
Lyginia barbata

Rhamnaceae

Trymalium albicans

Rubiaceae

Opercularia vaginata

Flora list for C13 Wabling MPA 15.3 (extracted from Swan Coastal Plain database, Milt01, 04, Water01,  
Wabl01-04 and from Northern Sandplains database NSI OYR02, 9/1/95).

Scrophulariaceae

- \* *Dischisma arenarium*

Stylidiaceae

- Levenhookia* sp. scps
- Stylidium brunonianum*
- Stylidium calcaratum*
- Stylidium diuroides*
- Stylidium junceum*
- Stylidium macrocarpum*
- Stylidium maritimum* MS
- Stylidium piliferum*
- Stylidium repens*

Thymelaeaceae

- Pimelea sulphurea*

Urticaceae

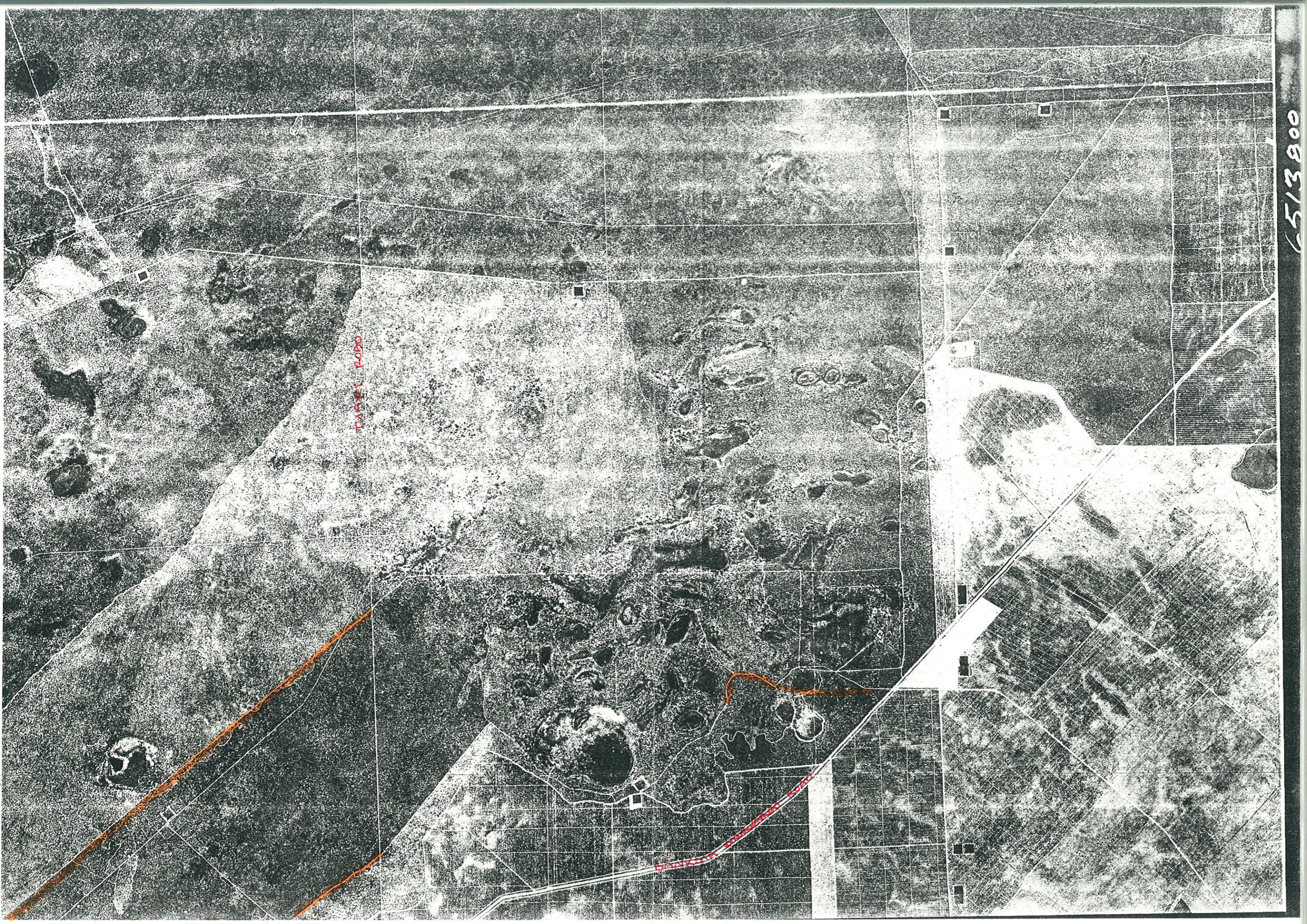
- Parietaria debilis*

Violaceae

- Hybanthus calycinus*

Xanthorrhoeaceae

- Xanthorrhoea preissii*



TRAY 2090

6513900

