



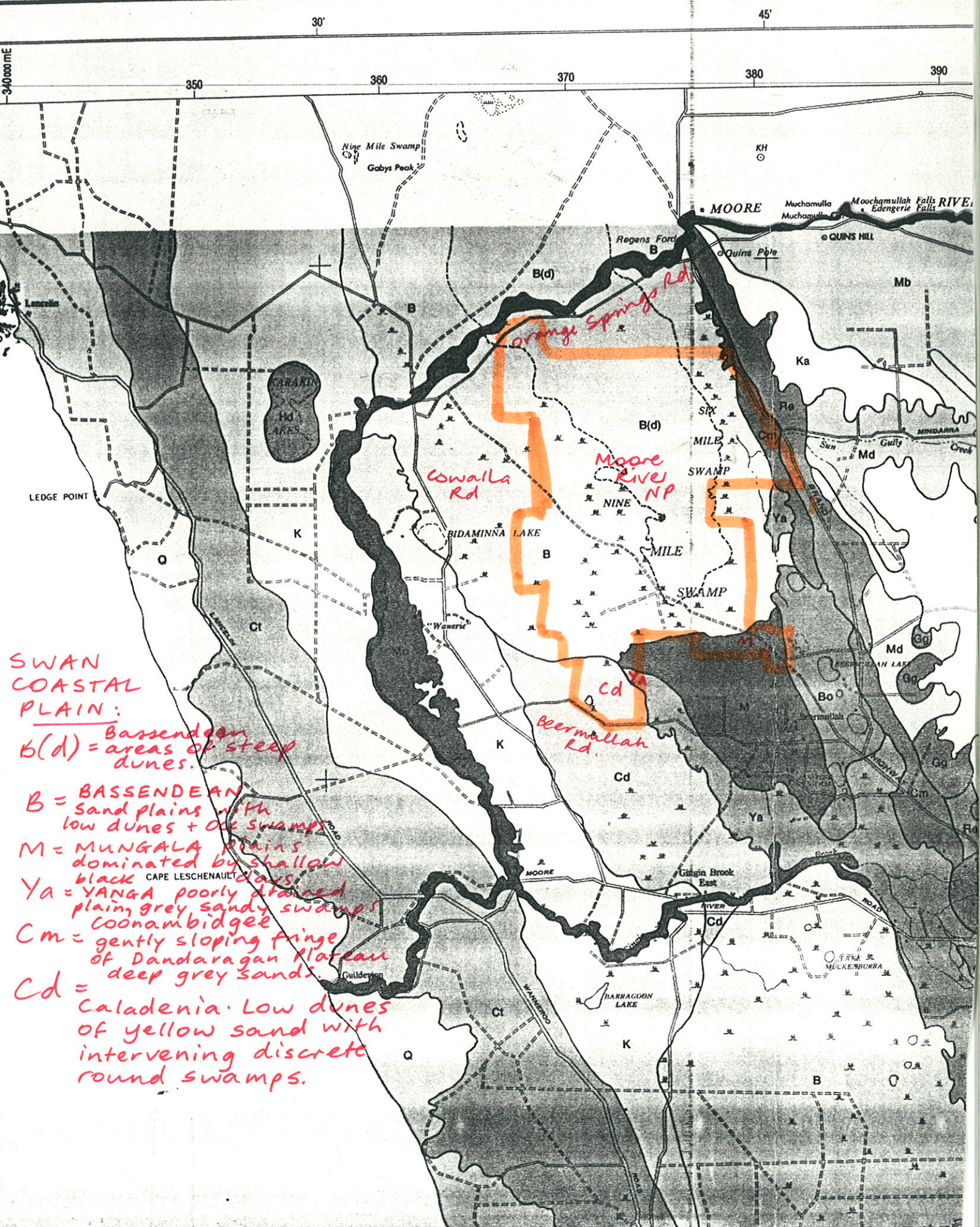
f1

File 11φ/81 extract

PLEASE KEEP THIS SHEET ON TOP

# DARLING SYSTEM

Boundaries of C2 approx. only.



**SWAN COASTAL PLAIN:**  
 B(d) = Bassendean areas of steep dunes.  
 B = BASSENDEAN sand plains with low dunes + oolite swamps.  
 M = MUNGALA plains dominated by shallow black clays.  
 Ya = YANGA poorly drained plain, grey sandy swamps, coonambidgee.  
 Cm = gently sloping fringe of Dandaragan Plateau deep grey sands.  
 Cd = Caladenia. Low dunes of yellow sand with intervening discrete round swamps.

## R. A. O. U. TRACKING DATABASE

11/05/96

PARK SIGHTINGS REPORT

Page No.

1

Moore River N.P. (C2)

ORDER:	REF:	BIRD NAME	NO.	SIGHTINGS
0003	0001	Emu	1	
0032	0208	Pacific Black Duck	1	
0128	0101	Darter	1	
0129	0100	Little Pied Cormorant	1	
0131	0099	Pied Cormorant	2	
0132	0097	Little Black Cormorant	2	
0133	0096	Great Cormorant	1	
0135	0106	Australian Pelican	1	
0145	0187	Great Egret	2	
0158	0180	Straw-necked Ibis	1	
0165	0232	Black-shouldered Kite	1	
0187	0240	Nankeen Kestrel	2	
0275	0143	Red-capped Plover	1	
0297	0125	Silver Gull	1	
0303	0112	Caspian Tern	1	
0305	0115	Crested Tern	1	
0359	0273	Galah	2	
0386	0294	Australian Ringneck	2	
0405	0337	Pallid Cuckoo	1	
0408	0338	Fan-tailed Cuckoo	1	
0446	0322	Laughing Kookaburra	2	
0453	0329	Rainbow Bee-eater	1	
0472	0536	Variegated Fairy-wren	3	1
0474	0540	Blue-breasted Fairy-wren	1	
0476	0535	White-winged Fairy-wren	3	1
0517	0463	Western Gerygone	1	
0524	0476	Inland Thornbill	3	1
0531	0486	Yellow-rumped Thornbill	3	1
0537	0638	Red Wattlebird	2	
0539	0637	Little Wattlebird	4	1
0550	0635	Yellow-throated Miner	1	
0561	0608	Singing Honeyeater	2	
0580	0578	White-naped Honeyeater	4	1
0583	0597	Brown Honeyeater	1	
0587	0631	New Holland Honeyeater	4	1
0590	0593	Tawny-crowned Honeyeater	4	1
0597	0592	Western Spinebill	2	
0613	0380	Scarlet Robin	3	1
0646	0419	Crested Bellbird	1	
0653	0401	Rufous Whistler	1	
0673	0361	Grey Fantail	1	
0676	0364	Willie Wagtail	2	
0678	0424	Black-faced Cuckoo-shrike	2	

			Page No.
0683	0430	White-winged Triller	1
0695	0702	Grey Butcherbird	2
0698	0705	Australian Magpie	1
0706	0930	Australian Raven	1
0725	0647	Richard's Pipit	1
0763	0357	Welcome Swallow	1
0774	0509	Rufous Songlark	1
0781	0574	Silvereye	1

\*\*\* END OF REPORT \*\*\*

①  
②  
③ 5  
④ 4

SUMMARY REPORT

TOTAL BIRDS SIGHTED	:	51
TOTAL NUMBER OF CARDS	:	2

\*\*\* END OF SUMMARY \*\*\*

File  
119/81

fl

C2

Vacant Crown Land Adjoining Moore River National Park  
(Recommendation C2)

This area of banksia woodland, whilst superficially similar to the National Park, contains some important differences. It is in fact the only area of Crown land that represents the 'Caladenia' soils and their associated vegetation. The shrub understorey is variable and different in composition from that of the Park.

Moreover the wetlands in the vacant Crown Land are also distinctive. In contrast to the diffuse swampy areas in Moore River National Park, most of them contain open water. One of the larger lakes contained several hundred waterbirds on July 11, when inspected.

Reserve 33022, Beside Moore River National Park (C2)

This reserve, on the eastern side of the Brand Highway opposite the National Park, is situated in the scarp of the Dandaragan Plateau, and offers a panoramic view of the Park and adjacent parts of the coastal plain.

Its vegetation is largely different from that of the Park. One of its features is the good stand of wandoo towards the southern end. This species, absent from the National Park and relatively uncommon in neighbouring areas, is the favoured nest-tree for parrots and cockatoos in the area.

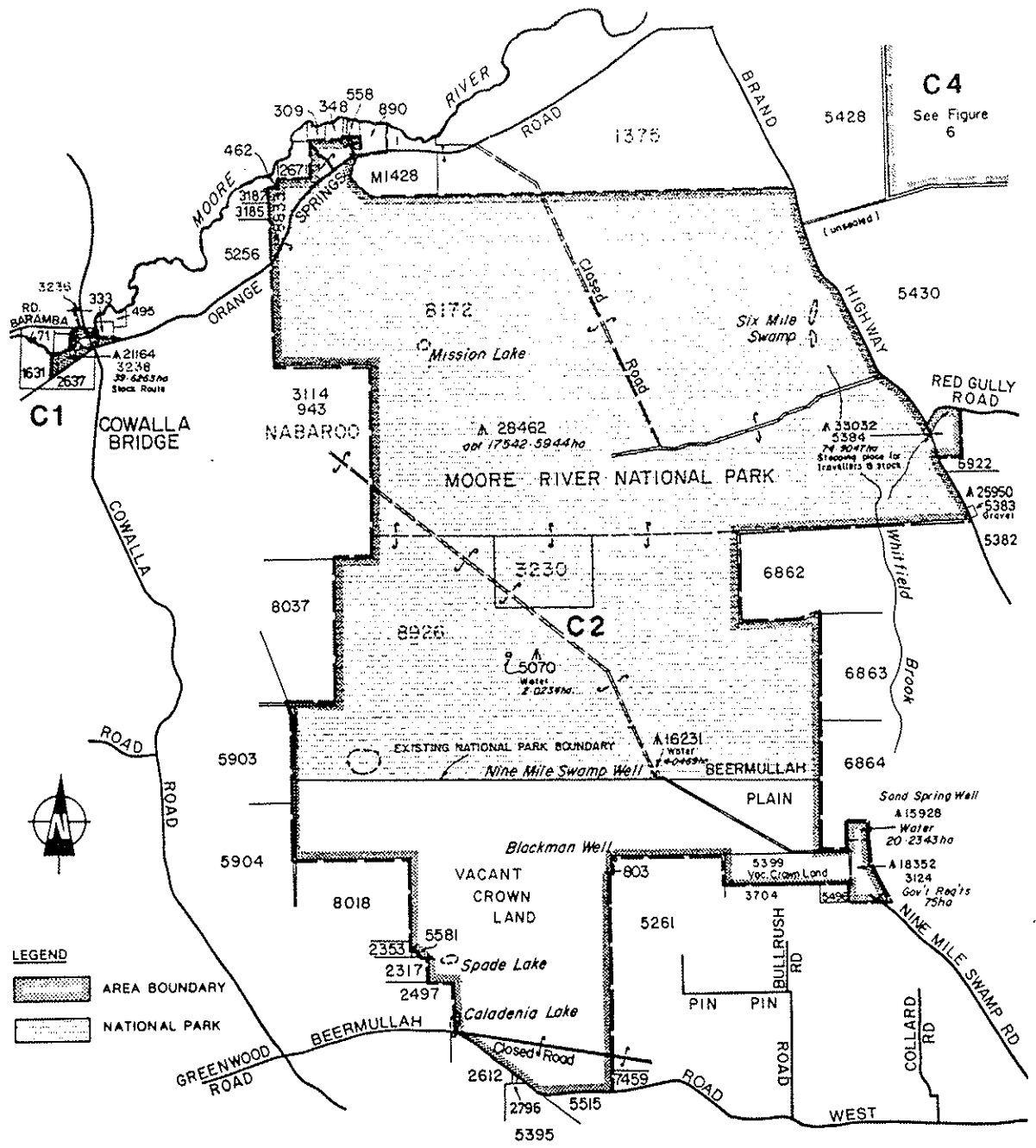
Reserve 18352, Near Moore River National Park (C2)

This reserve is linked to the National Park by vacant Crown land. In the south-east of the reserve is a low swampy area containing swamp cypress (Actinostrobus pyramidalis), one-sided bottlebrush and hakea. Swamp cypress is rare in the National Park, and swamps dominated by this and its associated plant species are not well represented in conservation reserves. At the time of inspection, a flock of 55 white-tailed black cockatoos (Calyptorhynchus funereus latirostris) was feeding in this vegetation. This cockatoo is declining in numbers owing to the loss of feeding habitat following agricultural clearing. Native shrubland for feeding is critical for the breeding success of this species.

VCL +  
AC33022  
to become  
Cons F+F  
(14.6.91  
recommend<sup>n</sup>)

AC15928 to become Cons. F+F (Recomm. 14.6.91)

Locations 11592, 5399, 3124 became  
AC41834 Cons. F+F on 13.9.'91



LANDS DEPARTMENT PUBLIC PLAN NO.

SHIRE OF GINGIN

Figure 5

C2 MOORE RIVER NATIONAL PARK and southern additions

O (SP) = 13 sites.

O (LEG) = 20 (? includes above)

MOORE RIVER

to the Moore River to the north of Quins Hill, and in the Shire of Gingin, and C25591, for Public Utility

action.

ly represented in conservation reserves elsewhere

m and paperbark fringes the Moore River. There is tri, with an understorey of banksia and pricklybark. b sheoak, blackboy, common smokebush, telegraph tains a wetland and vegetation consisting of open marri woodland on the midslopes and flooded gum

CONTACT GREG BEESTON for further information.

Flora list for C2 Moore River National Park (sites SAN MOOR01-09, BEER01-04, NSI MR01-18, MNP01 extracted from Northern Sandplains database, sites MRNP01-04 extracted from DEP System 6 Update database, BJ Keighery, 9/1/96).

**Department of Environmental Protection System 6 Update: Site Based Flora List for C2 Moore River National Park**

(sites SAN MOOR01-09, BEER01-04, NSI MR01-18, MNP01 extracted from the Dept of Agriculture Northern Sandplains database, sites MRNP01-04 extracted from DEP System 6 Update database, BJ Keighery, 9/1/95)

Amaranthaceae

*Ptilotus manglesii*

Anthericaceae

*Arnocrinum preissii*  
*Borya scirpoidea*  
*Borya sphaerocephala*  
*Chamaescilla corymbosa*  
*Corynotheca micrantha*  
*Hensmania turbinata*  
*Laxmannia ramosa*  
*Laxmannia sessiliflora* subsp. *drummondii*  
*Sowerbaea laxiflora*  
*Thysanotus manglesianus*  
*Thysanotus multiflorus*  
*Thysanotus* sp. *manglesianus/patersonii* scps  
*Thysanotus sparteus*  
*Thysanotus spiniger*  
*Thysanotus thyrsoides*  
*Thysanotus triandrus*  
*Tricoryne elatior*

Apiaceae

*Actinotus leucocephalus*  
*Eryngium* aff. *subdecumbens* Ms  
*Hydrocotyle alata*  
*Hydrocotyle callicarpa*  
*Hydrocotyle pilifera*  
*Platysace teres*  
*Schoenolaena juncea*  
*Trachymene pilosa*  
*Xanthosia huegelii*

Asteraceae

\* *Arctotheca calendula*  
*Brachyscome iberidifolia*  
*Cotula australis*  
*Cotula coronopifolia*  
*Gnephosis tenuissima*  
*Hyalosperma cotula*  
\* *Hypochaeris glabra*  
*Millotia tenuifolia*  
*Myriocephalus appendiculatus*  
*Podotheca angustifolia*

CONTACT GREG BEESTON for further information.

Flora list for C2 Moore River National Park (sites SAN MOOR01-09, BEER01-04, NSI MR01-18, MNP01 extracted from Northern Sandplains database, sites MRNP01-04 extracted from DEP System 6 Update database, BJ Keighery, 9/1/96).

*Podotheca gnaphalioides*

*Pogonolepis stricta*

\* *Pseudognaphalium luteoalbum*

*Quinetia urvillei*

*Rutidosia multiflora*

*Siloxerus humifusus*

\* *Ursinia anthemoides*

*Waitzia paniculata*

*Waitzia suaveolens*

#### Casuarinaceae

*Allocasuarina humilis*

#### Centrolepidaceae

*Aphelia cyperoides*

*Brizula nutans*

*Centrolepis aristata*

*Centrolepis glabra*

*Centrolepis inconspicua*

*Centrolepis mutica*

*Centrolepis polygyna*

#### Chloanthaceae

*Pityrodia bartlingii*

#### Colchicaceae

*Burchardia bairdiae*

*Burchardia multiflora*

*Burchardia umbellata*

#### Crassulaceae

*Crassula colorata*

\* *Crassula natans*

*Crassula pedicellosa*

*Crassula peduncularis*

*Crassula sp. scps*

#### Cupressaceae

*Actinostrobus pyramidalis*

#### Cyperaceae

*Baumea juncea*

*Caustis dioica*

*Cyathochaeta avenacea*

\* *Cyperus tenellus*

*Gahnia trifida*

*Isolepis cernua*

*Isolepis stellata*

CONTACT GREG BEESTON for further information.

Flora list for C2 Moore River National Park (sites SAN MOOR01-09, BEER01-04, NSI MR01-18, MNP01 extracted from Northern Sandplains database, sites MRNP01-04 extracted from DEP System 6 Update database, BJ Keighery, 9/1/96).

Lepidosperma angustatum  
Lepidosperma longitudinale  
Lepidosperma scabrum  
Mesomelaena pseudostygia  
Schoenus aff. brevisetis scps  
Schoenus clandestinus  
Schoenus curvifolius  
Schoenus discifer  
Schoenus latitans  
Schoenus odontocarpus  
Schoenus pleiostemoneus  
Schoenus rigens  
Schoenus rodwayanus  
Schoenus sp. 2 (GJK 5739) scps  
Schoenus sp. scps  
Schoenus sp. Wongan (E.A. Griffin 3841) PN  
Schoenus tenellus  
Tetraria octandra

#### Dasyogonaceae

Calectasia cyanea  
Lomandra caespitosa  
Lomandra drummondii  
Lomandra hermaphrodita  
Lomandra odora  
Lomandra preissii

#### Dilleniaceae

Hibbertia acerosa  
Hibbertia aurea  
Hibbertia desmophylla  
Hibbertia huegelii  
Hibbertia hypericoides  
Hibbertia stellaris  
Hibbertia subvaginata

#### Droseraceae

Drosera erythrorhiza  
Drosera gigantea  
Drosera glanduligera  
Drosera heterophylla  
Drosera leucoblasta  
Drosera macrantha  
Drosera menziesii subsp. menziesii  
Drosera menziesii subsp. penicillaris  
Drosera paleacea  
Drosera rosulata  
Drosera sp. scps

#### Epacridaceae

Andersonia heterophylla

CONTACT GREG BEESTON for further information.

Flora list for C2 Moore River National Park (sites SAN MOOR01-09, BEER01-04, NSI MR01-18, MNP01 extracted from Northern Sandplains database, sites MRNP01-04 extracted from DEP System 6 Update database, BJ Keighery, 9/1/96).

*Andersonia involucrata*  
*Andersonia lehmanniana*  
*Astroloma glaucescens*  
*Astroloma stomarrhena*  
*Astroloma xerophyllum*  
*Conostephium minus*  
*Conostephium pendulum*  
*Conostephium preissii*  
*Leucopogon conostephioides*  
*Leucopogon gracillimus*  
*Leucopogon leptanthus*  
*Leucopogon nutans*  
*Leucopogon oliganthus*  
*Leucopogon polymorphus*  
*Leucopogon racemulosus*  
*Leucopogon sprengelioides*  
*Lysinema ciliatum*  
*Lysinema elegans*

#### Euphorbiaceae

*Monotaxis grandiflora*  
*Poranthera microphylla*  
*Pseudanthus virgatus*  
*Stachystemon axillaris*

#### Gentianaceae

\* *Cicendia filiformis*

#### Goodeniaceae

*Anthotium junciforme*  
*Dampiera linearis*  
*Dampiera teres*  
*Goodenia pulchella*  
*Lechenaultia floribunda*  
*Scaevola canescens*  
*Scaevola lanceolata*  
*Scaevola phlebopetala*  
*Scaevola repens* var. *repens*  
*Scaevola virgata*  
*Velleia trinervis*

#### Haemodoraceae

*Anigozanthos humilis*  
*Anigozanthos viridis*  
*Anigozanthos viridis* subsp. *metallica* MS  
*Blancoa canescens*  
*Conostylis aculeata*  
*Conostylis aurea*  
*Conostylis juncea*  
*Conostylis prolifera*  
*Conostylis teretifolia* subsp. *teretifolia*

CONTACT GREG BEESTON for further information.

Flora list for C2 Moore River National Park (sites SAN MOOR01-09, BEER01-04, NSI MR01-18, MNP01 extracted from Northern Sandplains database, sites MRNP01-04 extracted from DEP System 6 Update database, BJ Keighery, 9/1/96).

Haemodorum laxum  
Haemodorum paniculatum  
Haemodorum simplex  
Haemodorum spicatum  
Haemodorum venosum  
Phlebocarya ciliata  
Phlebocarya filifolia  
Tribonanthes australis  
Tribonanthes uniflora  
Tribonanthes violacea

Haloragaceae

Gonocarpus pithyoides  
Myriophyllum echinatum

Hydatellaceae

Trithuria submersa

Iridaceae

Patersonia occidentalis

Isoetaceae

Isoetes drummondii

Juncaceae

\* Juncus bufonius

Juncaginaceae

Triglochin centrocarpum

Lamiaceae

Hemiandra pungens

Lauraceae

Cassytha flava  
Cassytha glabella  
Cassytha pomiformis  
Cassytha racemosa

Lentibulariaceae

Polypompholyx multifida  
Polypompholyx tenella scps  
Utricularia violacea  
Utricularia volubilis

CONTACT GREG BEESTON for further information.

Flora list for C2 Moore River National Park (sites SAN MOOR01-09, BEER01-04, NSI MR01-18, MNP01 extracted from Northern Sandplains database, sites MRNP01-04 extracted from DEP System 6 Update database, BJ Keighery, 9/1/96).

Lobeliaceae

*Isotoma scapigera*

Loganiaceae

*Logania spermacocea*  
*Mitrasacme paradoxa*

Loranthaceae

*Nuytsia floribunda*

Lycopodiaceae

*Phylloglossum drummondii*

Menyanthaceae

*Villarsia capitata*

Mimosaceae

*Acacia auronitens*  
*Acacia huegelii*  
*Acacia pulchella*  
*Acacia saligna*  
*Acacia sessilis*  
*Acacia sphacelata* subsp. *sphacelata* MS  
*Acacia stenoptera*  
*Acacia willdenowiana*

Molluginaceae

*Macarthuria australis*

Myrtaceae

*Astartea* aff. *fascicularis* sthst  
*Baeckea tenuifolia*  
*Beaufortia elegans*  
*Calothamnus hirsutus*  
*Calothamnus quadrifidus*  
*Calothamnus sanguineus*  
*Calytrix angulata*  
*Calytrix aurea*  
*Calytrix flavescens*  
*Calytrix fraseri*  
*Calytrix leschenaultii*  
*Calytrix sapphirina*  
*Eremaea asterocarpa* subsp. *asterocarpa*  
*Eremaea beaufortoides* var. *beaufortoides*  
*Eremaea pauciflora*  
*Eucalyptus todtiana*  
*Hypocalymma angustifolium*

CONTACT GREG BEESTON for further information.

Flora list for C2 Moore River National Park (sites SAN MOOR01-09, BEER01-04, NSI MR01-18, MNP01 extracted from Northern Sandplains database, sites MRNP01-04 extracted from DEP System 6 Update database, BJ Keighery, 9/1/96).

Hypocalymma xanthopetalum  
Kunzea recurva  
Leptospermum spinescens  
Melaleuca aff. scabra (MRNP)  
Melaleuca bracteosa  
Melaleuca brevifolia  
Melaleuca ciliosa  
Melaleuca cuticularis  
Melaleuca incana  
Melaleuca lateriflora  
Melaleuca lateritia  
Melaleuca pentagona  
Melaleuca preissiana  
Melaleuca raphiophylla  
Melaleuca scabra  
Melaleuca seriata  
Melaleuca teretifolia  
Melaleuca trichophylla  
Melaleuca uncinata  
Melaleuca viminea  
Pericalymma ellipticum  
Regelia ciliata  
Scholtzia involucrata  
Scholtzia laxiflora  
Thryptomene prolifera  
Verticordia acerosa  
Verticordia chrysantha  
Verticordia chrysanthella  
Verticordia densiflora  
Verticordia drummondii  
Verticordia nitens  
Verticordia ovalifolia  
Verticordia plumosa  
Verticordia plumosa var. brachyphylla

#### Orchidaceae

Caladenia cairnsiana  
Caladenia flava  
Caladenia longicauda  
Caladenia longicauda subsp. albella MS  
Diuris carinata  
Elythranthera brunonis  
Elythranthera emarginata  
Eriochilus dilatatus  
Leporella fimbriata  
Lyperanthus nigricans  
Paracaleana nigrita  
Prasophyllum plumiforme  
Pterostylis aff. nana scps  
Pterostylis vittata  
Thelymitra antennifera

#### Papilionaceae

CONTACT GREG BEESTON for further information.

Flora list for C2 Moore River National Park (sites SAN MOOR01-09, BEER01-04, NSI MR01-18, MNP01 extracted from Northern Sandplains database, sites MRNP01-04 extracted from DEP System 6 Update database, BJ Keighery, 9/1/96).

Aotus procumbens  
Bossiaea eriocarpa  
Daviesia decurrens  
Daviesia divaricata  
Daviesia nudiflora  
Daviesia physodes  
Daviesia preissii  
Dillwynia dillwynioides  
Euchilopsis linearis  
Eutaxia virgata  
Gompholobium knightianum  
Gompholobium preissii  
Gompholobium tomentosum  
Hovea pungens  
Isotropis cuneifolia  
Isotropis cuneiformis subsp. "glabra" scps map  
Jacksonia aff. sternbergiana MRNP  
Jacksonia angulata  
Jacksonia densiflora / floribunda complex scps  
Jacksonia furcellata  
Jacksonia sternbergiana  
Jacksonia ulicina  
Mirbelia trichocalyx  
Nemcia axillaris  
Nemcia reticulata  
Pultenaea reticulata  
Viminaria juncea

#### Philydraceae

Philydrella pygmaea

#### Poaceae

\* Aira caryophyllea  
Amphipogon debilis  
Amphipogon laguroides  
Amphipogon turbinatus  
\* Briza maxima  
\* Briza minor  
Danthonia sp. scps  
Neurachne alopecuroidea  
Poa drummondiana  
\* Polypogon monspeliensis  
Stipa compressa  
\* Vulpia myuros  
\* Vulpia sp. scps

#### Polygalaceae

Comesperma calymega  
Comesperma polygaloides

CONTACT GREG BEESTON for further information.

Flora list for C2 Moore River National Park (sites SAN MOOR01-09, BEER01-04, NSI MR01-18, MNP01 extracted from Northern Sandplains database, sites MRNP01-04 extracted from DEP System 6 Update database, BJ Keighery, 9/1/96).

Portulacaceae

*Calandrinia granulifera*

Proteaceae

*Adenanthos cygnorum*  
*Banksia attenuata*  
*Banksia grandis*  
*Banksia ilicifolia*  
*Banksia laricina*  
*Banksia littoralis*  
*Banksia menziesii*  
*Conospermum acerosum*  
*Conospermum stoechadis*  
*Dryandra carlinoides*  
*Dryandra nivea*  
*Dryandra shuttleworthiana*  
*Grevillea thelemanniana* 'Yurine'  
*Hakea costata*  
*Hakea incrassata*  
*Hakea lissocarpha*  
*Hakea marginata*  
*Hakea obliqua*  
*Hakea ruscifolia*  
*Hakea smilacifolia*  
*Hakea stenocarpa*  
*Hakea subsulcata*  
*Hakea sulcata*  
*Hakea trifurcata*  
*Hakea varia*  
*Lambertia multiflora* var. *multiflora*  
*Persoonia comata*  
*Petrophile brevifolia*  
*Petrophile ericifolia*  
*Petrophile linearis*  
*Petrophile macrostachya*  
*Petrophile media* ssp. var. *juncifolius* ms  
*Petrophile rigida*  
*Petrophile seminuda*  
*Petrophile striata*  
*Stirlingia latifolia*  
*Stirlingia simplex*  
*Synaphea spinulosa*

Restionaceae

*Alexgeorgea nitens*  
*Hypolaena exsulca*  
*Lepidobolus preissianus*  
*Leptocarpus aristatus*  
*Leptocarpus canus*  
*Leptocarpus coangustatus*  
*Leptocarpus scariosus*  
*Lepyrodia macra*

10

CONTACT GREG BEESTON for further information.

Flora list for C2 Moore River National Park (sites SAN MOOR01-09, BEER01-04, NSI MR01-18, MNP01 extracted from Northern Sandplains database, sites MRNP01-04 extracted from DEP System 6 Update database, BJ Keighery, 9/1/96).

*Lepyrodia muirii*  
*Lyginia barbata*  
*Restio microcodon scps*  
*Restio sinosus scps ms*

Rubiaceae

*Opercularia vaginata*

Rutaceae

*Boronia ramosa*  
*Eriostemon spicatus*

Santalaceae

*Leptomeria empetriformis*

Selaginellaceae

*Selaginella gracillima*

Stackhousiaceae

*Stackhousia monogyna*  
*Tripterococcus brunonis*

Stylidiaceae

*Levenhookia stipitata*  
*Stylidium adpressum*  
*Stylidium brunonianum*  
*Stylidium calcaratum*  
*Stylidium carnosum*  
*Stylidium crossocephalum*  
*Stylidium diuroides*  
*Stylidium divaricatum*  
*Stylidium emarginatum*  
*Stylidium guttatum*  
*Stylidium inundatum*  
*Stylidium junceum*  
*Stylidium mimeticum*  
*Stylidium obtusatum*  
*Stylidium petiolare*  
*Stylidium piliferum*  
*Stylidium repens*  
*Stylidium schoenoides*  
*Stylidium sp. scps*

Surianaceae

*Stylobasium australe*

Thymelaeaceae

FOR INTERNAL USE ONLY

from EA Griffin 1994

1 1

CONTACT GREG BEESTON for further information.

Flora list for C2 Moore River National Park (sites SAN MOOR01-09, BEER01-04, NSI MR01-18, MNP01 extracted from Northern Sandplains database, sites MRNP01-04 extracted from DEP System 6 Update database, BJ Keighery, 9/1/96).

*Pimelea sulphurea*

Tremandraceae

*Tetratheca confertifolia*

Violaceae

*Hybanthus calycinus*

Xanthorrhoeaceae

*Xanthorrhoea drummondii*

*Xanthorrhoea preissii*

Zamiaceae

*Macrozamia riedlei*





MRNP 01



MRNP 02



MRNP 03



MRNP 04

NOTE TO FILE

MOORE RIVER NATIONAL PARK (C2)

- FIELD INSPECTION
1. Reserve 15928, for Water contains a prominent hill on its southern boundary with Reserve 18352. The land slopes away to the level of the surrounding plains in the northern part of the Reserve.
  2. The vegetation on Reserve 15928 is not significantly different to that of Reserve 18352.



ABOVE: SWAMPLAND TYPICAL OF THAT FOUND ON V.C.L.,  
SOUTH OF MOORE R. NATIONAL PARK.



ABOVE: SOUTHERN - MIDDLE PART OF 9 MILE SWAMP  
MARI - PAPERBARK WOODLAND



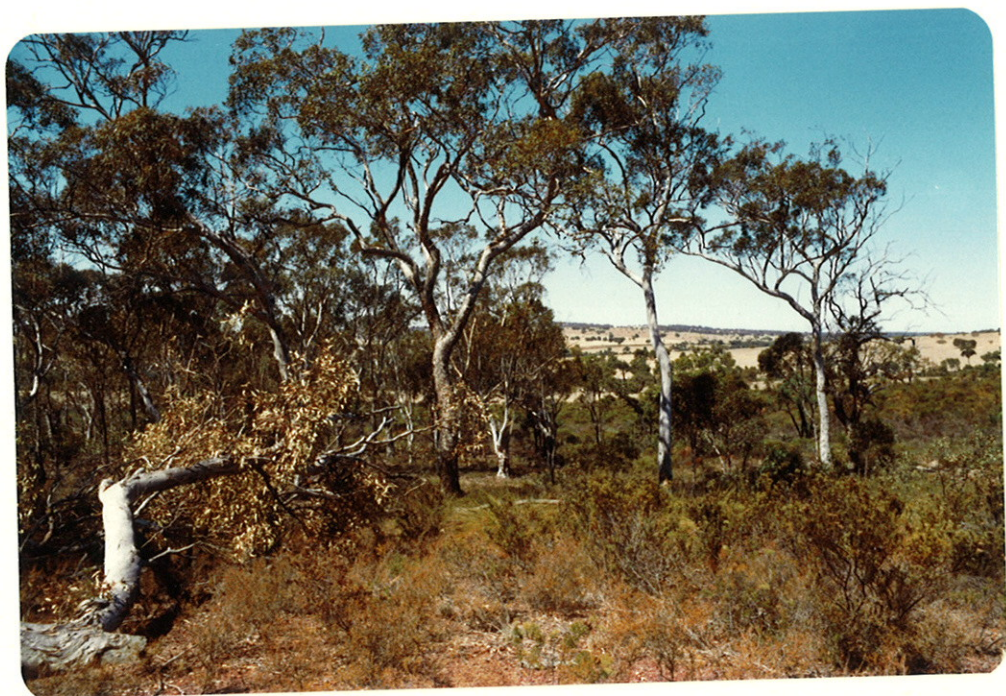
View from Hill on boundary between Reserves 1592 and 18352 looking west into U.C.L. south of Moore R. National Park. - Tree species are banksia, pricklybark with woollybush, buttercup etc.



southern part of 9-mile-swamp - MOORE NATIONAL PARK. NARROW STRIP OF MARRI with Banksia & blackboys is in stark contrast to surrounding banksia woodland.



Wandoo woodland - on highest part of Reserve



Banksia - wandoo woodland on upper slope  
(facing north-east).



MOORE RIVER NATIONAL PARK - JANUARY 1983



WILD 1574 UAGA  
Nr. 19037, 152,72

000141

- 5022 - 1 267 - 59 100 0200 0320 56 -

000000 003173 21 01 25 60 1878

WILD 1574UA6A

Nr. 13037 152.72

000143

- 5022 - 1 267 - 59 100 0140 0300 56 -

000000 002407 210125 60 2108

5092

WA 2813(C) COASTAL WETLANDS AREA "A" RUN 19 (5001-5112) 1:20000 8-12-80 000101

WILD 15740A6A

Nr 13037 15272

000144

- 5022 - 1 268 - 60 100 0180 0300 56 -

000000 002858 058200 0125 60 2428

WILD 1574 UABA  
Nº 130.97 152.72

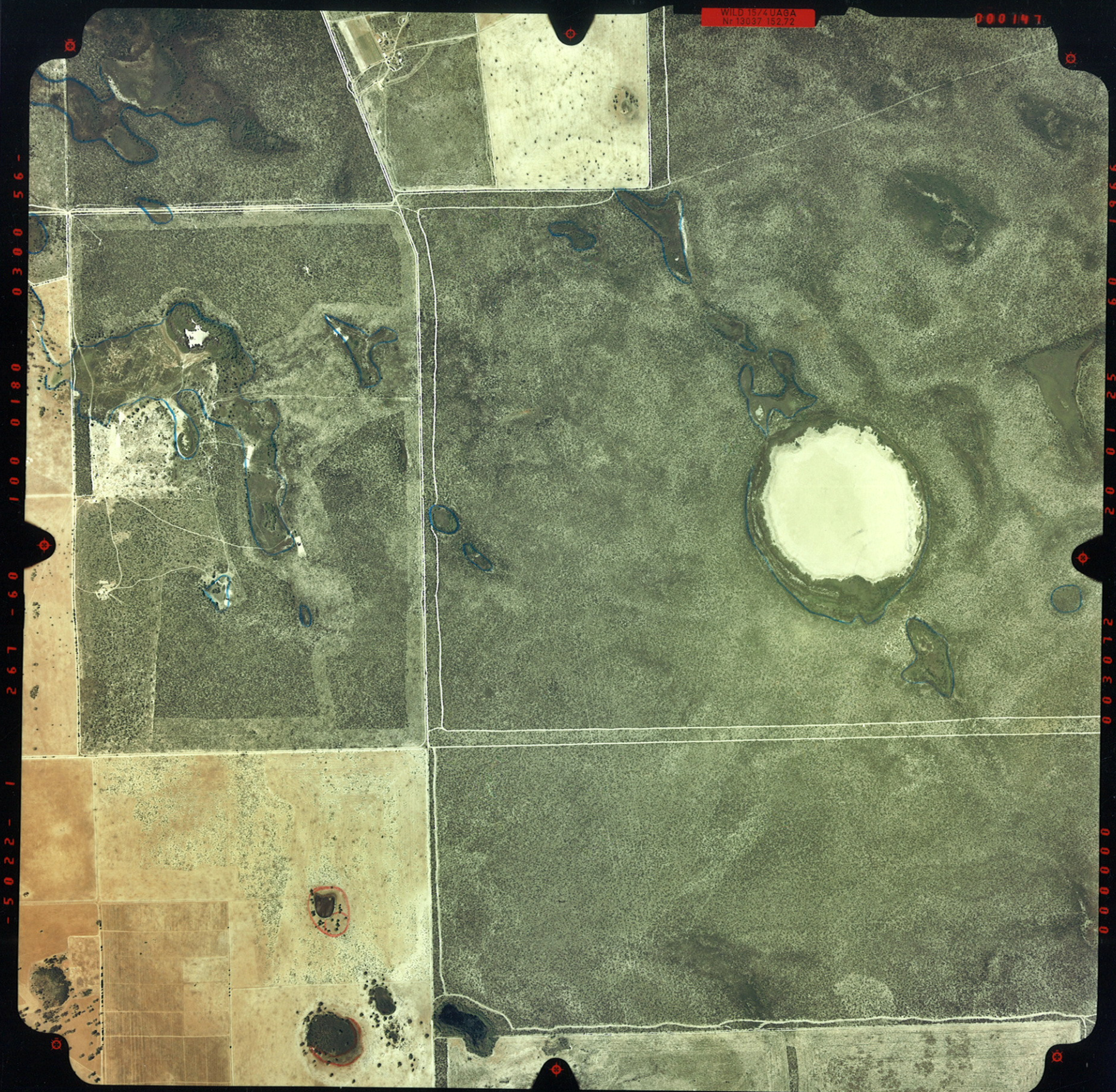
000195

- 5022 - 1 268 - 59 100 0180 0300 56 -

000000 002879 20 01 25 60 2080

5094

WA 2813(C) COASTAL WETLANDS AREA "A" RUN 19 (5001-5112) 1:20000 9.12.89 890121



WILD 1574UAGA  
Nr 13837 15272

000197

- 5022 - 1 267 - 60 100 0180 0300 56 -

000000 003072 20 0125 60 1966

WILD 1574 DABA  
NF 13037 152.72

000149

- 5022 - 1 267 - 59 100 0180 0300 56 -

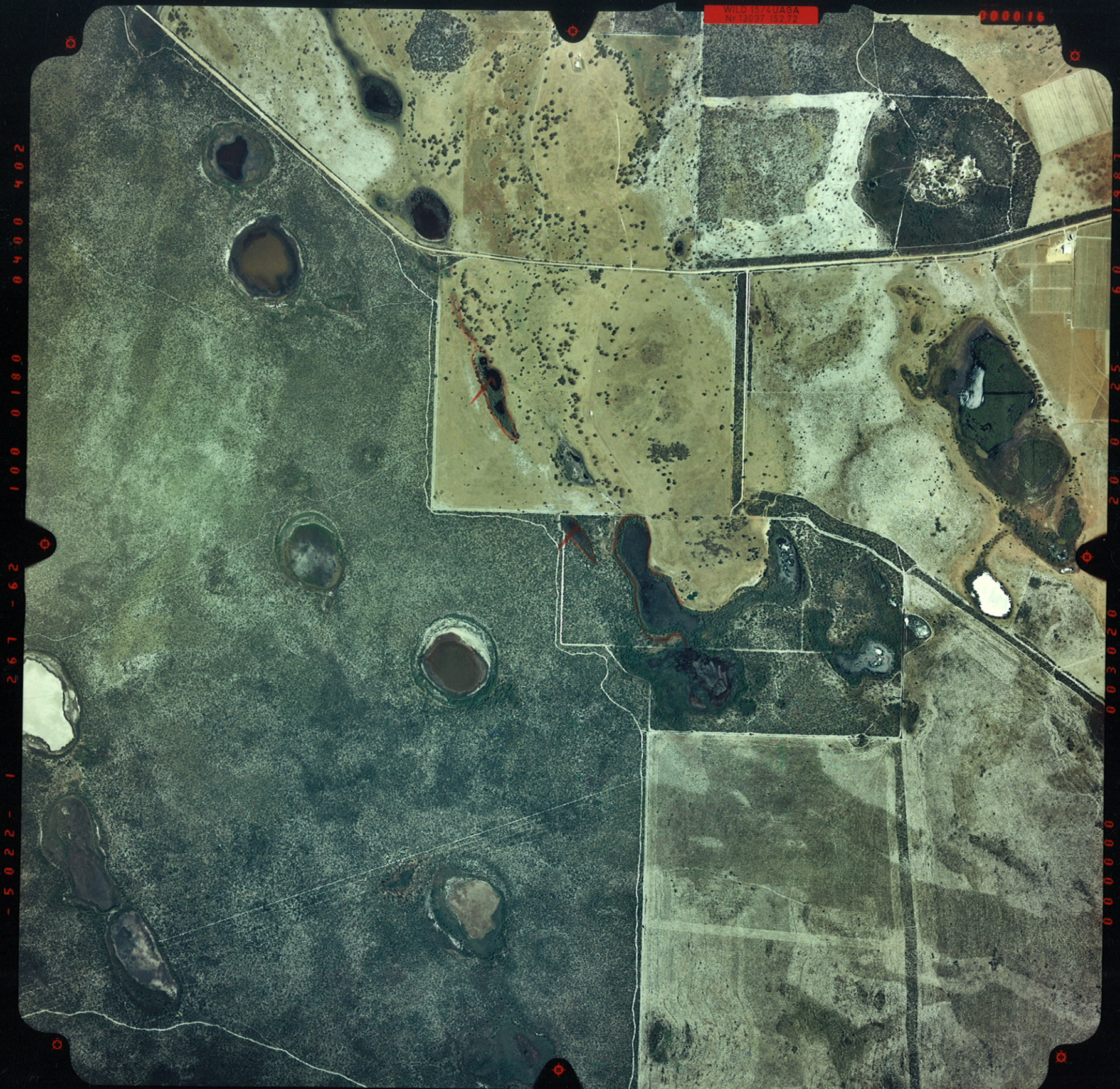
000000 003068 210125 601935

WILD 15/40A9A  
Nr 13037-15272

000014

-5022-1 267 -60 100 0180 0400 402

000000 003024 200125 0901988



WILD 15240AGA  
Nr 13037 152.72

000016

-5022 - 1 267 - 62 100 0180 0400 402

000000 003020 20 0125 60 1987

5132

WA 2815(C) COASTAL WETLANDS AREA "A" RUN 20 (5120-5210) 1:20000 13.12.89 890121

WILD 1574 UAGA  
Nr 13097 152.72

000018

-5022-1 268-60 100 0180 0400 402

000000 003016 20 0125 60 1390

5134

WA 2815(C) COASTAL WETLANDS AREA "A" RUN 20 (5120-5210) 1:20000 13.12.89 890121

WILD 1574 DABA  
NY 13097 152.72

000020

-5022-1 267-58 100 0180 0400 402

000000 003020 20 0125 60 1985

WILD 1574 UAGA  
Nr 13037 152.72

000022

-5022 - 1 268 - 60 100 0180 0400 402

000000 003016 200125 601965

WILD 1574 UAGA  
Nr 13037 182.72

000024

-5022-1 268 -59 100 0180 0400 402

000000 002999 20 0125 60 1987

5140

WA 2815(C) COASTAL WETLANDS AREA "A" RUN 20 (5120-5210) 1:20000 13.12.89 890121

WILD 1574UAGA  
Nr 13037 152.72

000026

-5022-1 267-58 100 0180 0400 402

000000 002870 20 0125 60 2072



WILD 15740A9A  
Nr 13037 152.72

000125

- 5022 - 1 267 - 60 100 0180 0340 56 -

000000 003072 200125 602001

5091

WA 2818(C) COASTAL WETLANDS AREA "A" RUN 21 (5001-5112) 1:20000 13.12.89 890121

WILD 15740A6A  
Nr 13037 152.72

000121

- 5022 - 1 268 - 60 100 0200 0340 56 -

000000 003157 200125 601951

5093

WA 2818(C) COASTAL WETLANDS AREA "A" RUN 21 (5001-5112) 1:20000 13.12.89 890121

WILD 15740A8A  
Nr 13937 15272

000129

- 5022 - 1 268 - 60 100 0180 0340 56 -

4202 09 52 10 02 125200 000000

5095

WA 2818(C) COASTAL WETLANDS AREA "A" RUN 21 (5001-5112) 1:20000 13.12.89 890121

WILD 15740A6A  
Nº 13037 152.72

000131

- 5022 - 1 267 - 60 100 0200 0340 56 -

000000 003137 20 01 25 60 1922

5097

WA 2818(C) COASTAL WETLANDS AREA "A" RUN 21 (5001-5112) 1:20000 13.12.89 890121



WILD 15/40A0A  
Nr 13037 152 72

000024

-5022-1 268-60 100 0200 0320 56-

000000 003133 21 0125 60 1901

WILD 15740A6A  
Nr 13037 152.72

000026

- 5022 - 1 267 - 60 100 0200 0320 56 -

000000 000000 003129 20 01 25 60 1926

WILD 1574 UAGA  
Nr 13037 152.72

000028

-5022-1 268 -60 100 0200 0320 56-

000000 003129 20012560 1923

5023

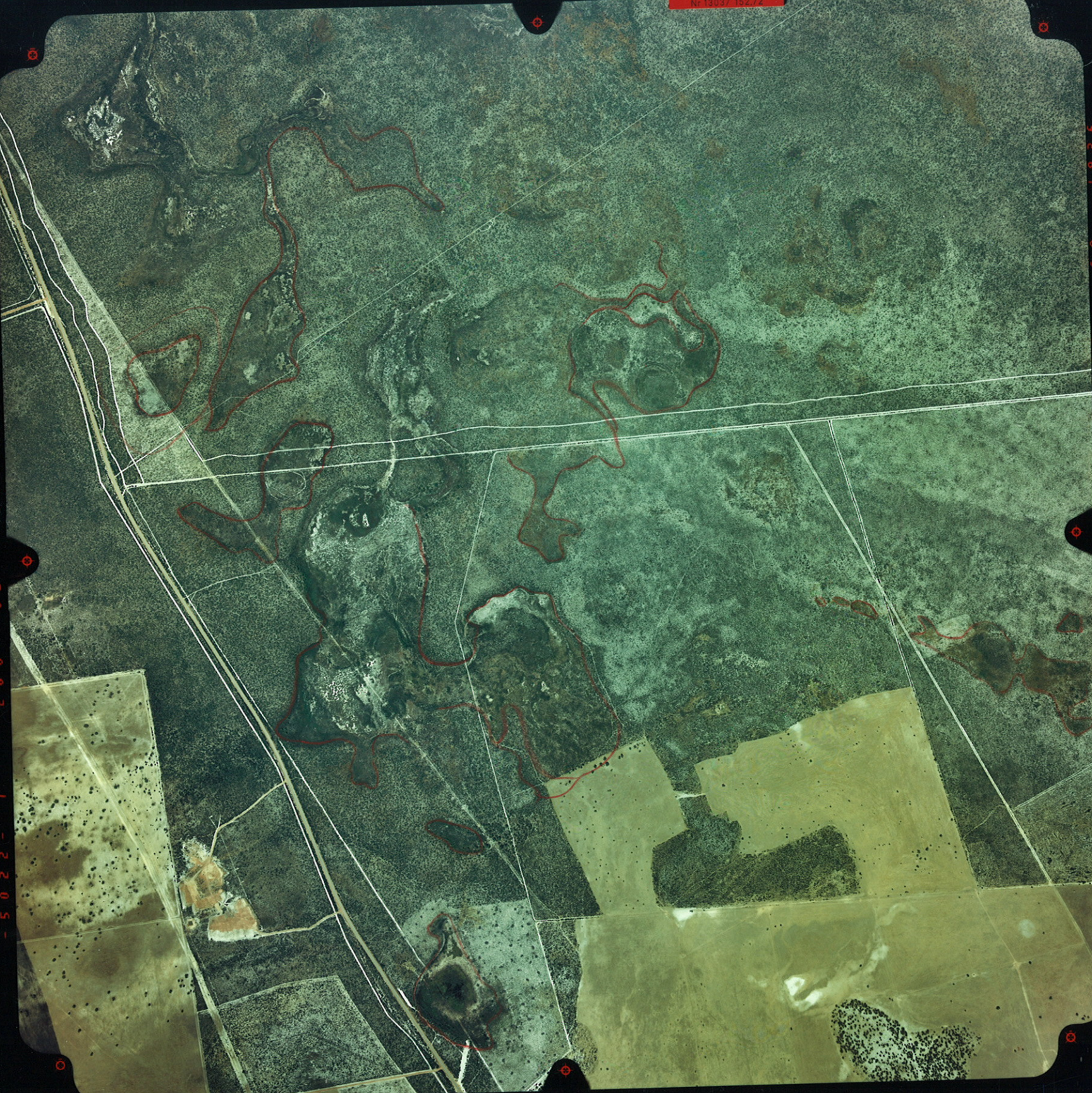
WA 2819(C) COASTAL WETLANDS AREA "A" RUN 22 (5001-5114) 1:20000 17.12.89 890121 /

WILD 1574 UAGA  
№ 13037 152.72

000030

- 5 0 2 2 - 1 2 6 8 - 6 2 1 0 0 0 2 0 0 0 3 2 0 5 6 -

0 0 0 0 0 0 0 0 3 1 2 9 2 0 0 1 0 2 5 6 0 1 9 2 6



WILD 1574 UAGA  
No 19087 152.72

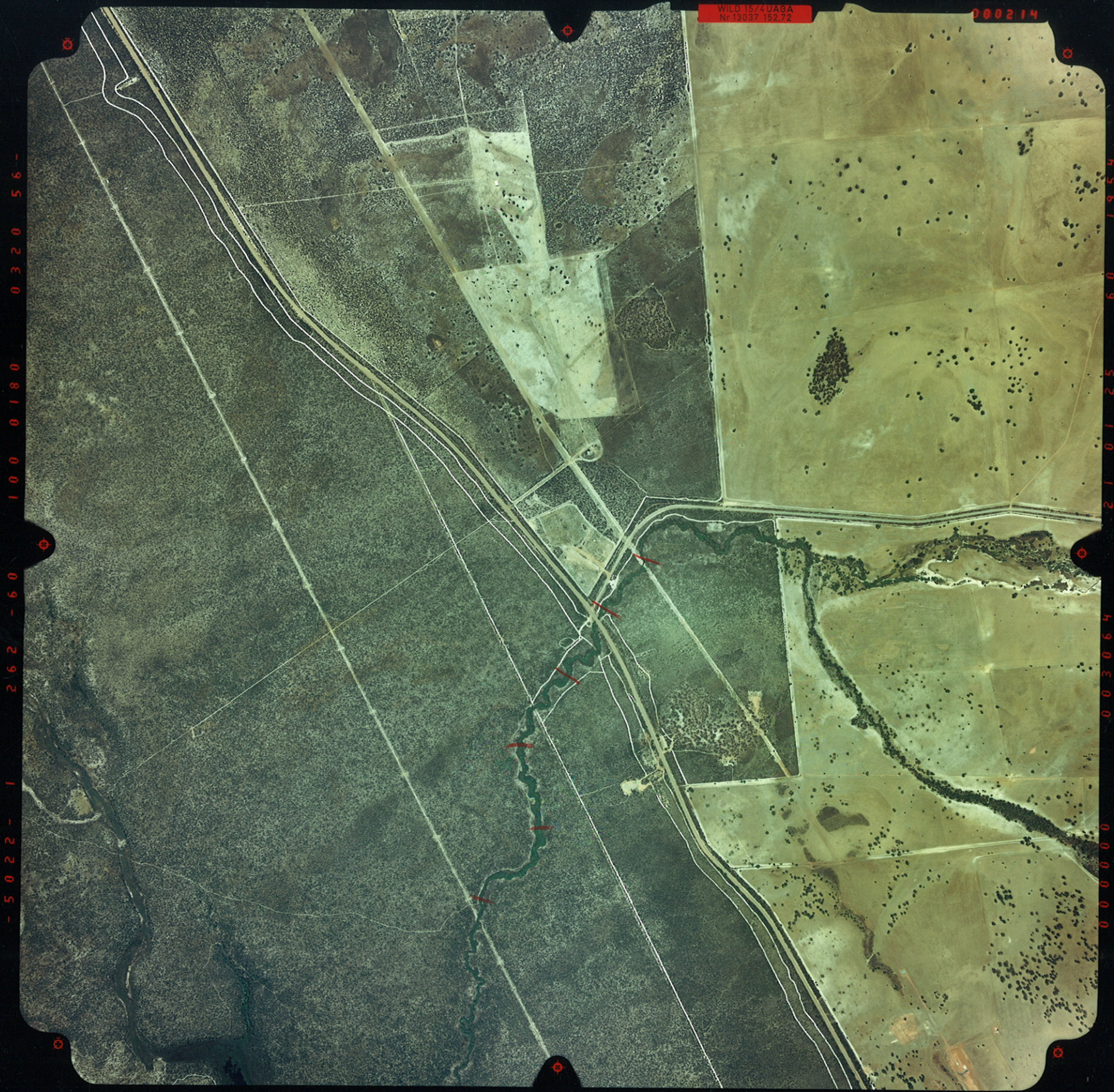
000213

- 5022 - 1 268 - 60 100 0180 0320 56 -

000000 003064 220125 60 1954

5208

WA 2819(C) COASTAL WETLANDS AREA "A" RUN 23 (5115-5225) 1:20000 17.12.89 890121



WILD 1574UAGA  
Nr 19937 192.72

000214

- 5 0 2 2 - 1 2 6 2 - 6 0 1 0 0 0 1 8 0 0 3 2 0 5 6 -

0 0 0 0 0 0 0 3 0 6 4 2 1 0 1 2 5 6 0 1 9 5 4

WILD 1574 UAGA  
Nr 13097 152.72

000215

- 5 0 2 2 - 1 2 6 7 - 6 0 1 0 0 0 1 8 0 0 3 2 0 5 6 -

5 5 6 1 0 9 5 2 1 0 2 2 0 0 3 0 6 4 4 9 0 5 0 0 0 0 0 0 0 0

WILD 15740A6A  
Nr 15037-15272

000216

- 5 0 2 2 - 1 2 6 8 - 5 9 1 0 0 0 1 8 0 0 3 2 0 5 6 -

1 5 6 1 0 9 5 2 1 0 2 2 8 9 0 5 0 0 0 0 0 0 0 0