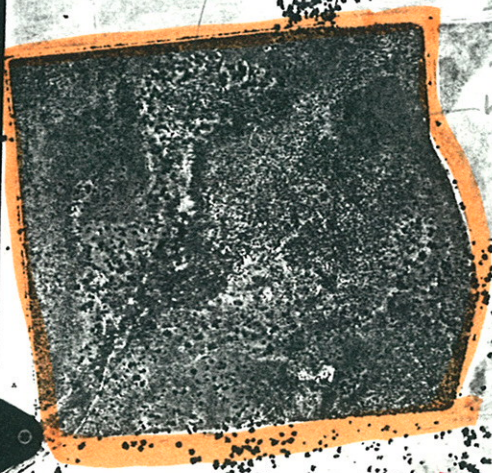


↑
N

WLD-15741A
N-1305715277

Wandos

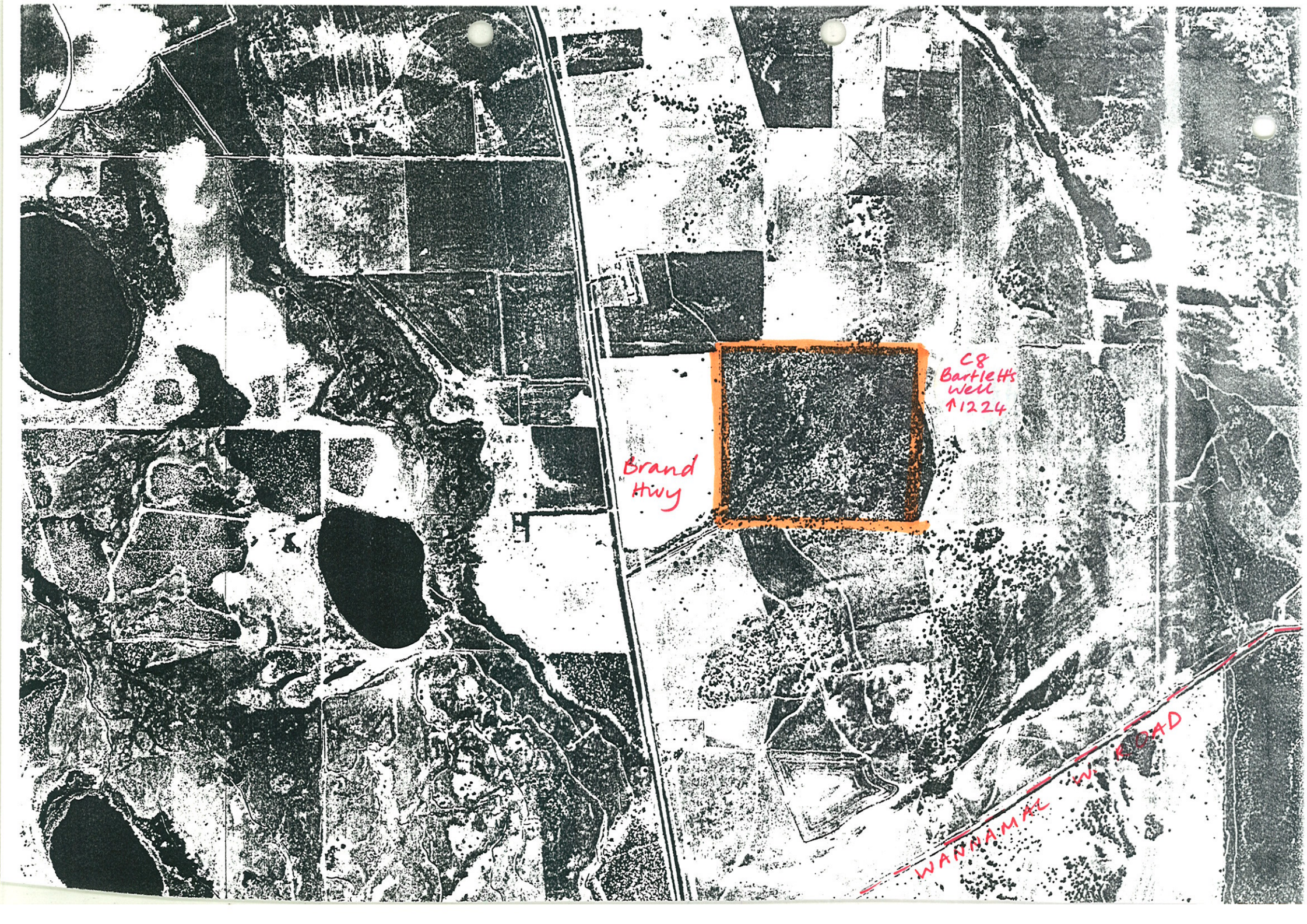
heath



← ca 1.3 Km →

Warramal
West
Rd

1000200003405



Brand
Hwy

C8
Bartlett's
Well
#1224

WANNAMAL
W. ROAD

Bartletts Well (Recommendation C8)

Although small, Bartletts Well reserve is very variable in topography, soils and vegetation. Although some of its vegetation is duplicated in the Boonanarring area (C9), this reserve contains some special features of its own. A freshwater seepage-line in the reserve contains the northernmost known population of the plant Schoenolaena juncea and an interesting form of green kangaroo paw. The smokebushes in the reserve are a complex of forms to two recognised species (and two varieties of one of these) and deserve further scientific study.

I am aware of your Council's concerns over the implementation of these and other recommendations in the System 6 Red Book. Given the values of the areas to conservation, I wonder whether your councillors would like to discuss the future of the areas with officers of this Department. Now that this new Department is established, with additional field staff to manage reserves, I believe it is a most suitable time for such discussions to take place.

At the same time another matter that perhaps could be discussed is the kangaroo paws in the Gingin Cemetery. Botanists at the Wildlife Research Centre would be happy to advise on some experimental treatments that could be carried out in order to determine the best ways of managing the area to maintain its scientific and tourist interest.

I look forward to hearing from you.

Yours faithfully,

RJU
R.J. UNDERWOOD
A/EXECUTIVE DIRECTOR
per RC

13 October 1986

Flora + fauna values highest
in southern area

CONTACT GREG BEESTON for further information.

Flora list for C8 Reserve C1224 Bartletts Well (extracted from Northern Sandplains database, NSI BW01-05, 20/12/95).

Department of Environmental Protection System 6 Update: Site Based Flora List for C8 Reserve C1224 Bartletts Well

(extracted from the Dept of Agriculture Northern Sandplains database, NSI BW01-05, 173 taxa 20/12/95)

Anthericaceae

Corynotheca micrantha
Thysanotus sp. manglesianus/patersonii scps

Apiaceae

Trachymene pilosa
Xanthosia huegelii

Asteraceae

Brachyscome iberidifolia
Hyalosperma cotula
* Hypochaeris glabra
Millotia tenuifolia
Podotrochea angustifolia
* Ursinia anthemoides
Waitzia paniculata
Waitzia suaveolens

Campanulaceae

* Wahlenbergia capensis
Wahlenbergia preissii

Casuarinaceae

Allocasuarina humilis

Colchicaceae

Burchardia umbellata

Cyperaceae

Caustis dioica
Lepidosperma angustatum
Mesomelaena pseudostygia
Schoenus clandestinus
Tetraria octandra

Dasyopogonaceae

Lomandra sericea

Dilleniaceae

Hibbertia acerosa
Hibbertia huegelii

CONTACT GREG BEESTON for further information.

Flora list for C8 Reserve C1224 Bartletts Well (extracted from Northern Sandplains database, NSI BW01-05, 20/12/95).

Hibbertia hypericoides
Hibbertia subvaginata

Epacridaceae

Conostephium preissii
Leucopogon gracillimus
Leucopogon nutans
Leucopogon oliganthus
Leucopogon propinquus

Euphorbiaceae

Phyllanthus calycinus

Haemodoraceae

Anigozanthos humilis
Conostylis setigera
Haemodorum venosum

Iridaceae

Orthrosanthus laxus

Lauraceae

Cassytha flava

Loranthaceae

Nuytsia floribunda

Mimosaceae

Acacia aff. *alata* scps (*alata* var. *tetrantha* Ms)
Acacia nervosa
Acacia pulchella

Myrtaceae

Baeckea camphorosmae
Baeckea grandiflora
Calothamnus quadrifidus
Calothamnus sanguineus
Calytrix angulata
Calytrix flavescens
Calytrix leschenaultii
Eremaea pauciflora
Eucalyptus calophylla
Eucalyptus todtiana
Leptospermum spinescens
Melaleuca ciliosa
Melaleuca trichophylla
Pileanthus filifolius

CONTACT GREG BEESTON for further information.

Flora list for C8 Reserve C1224 Bartletts Well (extracted from Northern Sandplains database, NSI BW01-05, 20/12/95).

Scholtzia involucrata

Papilionaceae

Bossiaea eriocarpa
Daviesia nudiflora
Daviesia preissii
Gompholobium knightianum
Gompholobium preissii
Jacksonia sternbergiana
Kennedia prostrata
Mirbelia trichocalyx
Nemcia capitata
Sphaerolobium macranthum

Phormiaceae

Styandra glauca

Poaceae

- * *Briza maxima*
- Neurachne alopecuroidea*
- * *Pentaschistis airoides*
- * *Vulpia* sp. scps

Primulaceae

- * *Anagallis arvensis*

Proteaceae

Banksia attenuata
Banksia menziesii
Conospermum stoechadis
Dryandra nivea
Dryandra shuttleworthiana
Hakea costata
Hakea incrassata
Hakea lissocarpha
Hakea stenocarpa
Hakea trifurcata
Petrophile brevifolia
Petrophile macrostachya
Petrophile striata
Synaphea spinulosa

Restionaceae

Alexgeorgea nitens
Lepidobolus preissianus
Loxocarya flexuosa

Rubiaceae

FOR INTERNAL USE ONLY from EA Griffin 1994

4

CONTACT GREG BEESTON for further information.

Flora list for C8 Reserve C1224 Bartletts Well (extracted from Northern Sandplains database, NSI BW01-05, 20/12/95).

Opercularia vaginata

Stackhousiaceae

Stackhousia monogyna

Stylidiaceae

Stylidium brunonianum

Stylidium calcaratum

Xanthorrhoeaceae

Xanthorrhoea drummondii

Xanthorrhoea preissii

Zamiaceae

Macrozamia riedlei

WILD 1574 UAGA
Nr 13037 152,72

000029

-5022-1 268-59 100 0200 0340 56-

000000 003403 20 01 25 60 1756

5247

WA 2820(C) COASTAL WETLANDS AREA "A" RUN 25B (5234-5250) 1:20000 31.12.89 890121