

ENTERED ON GIS

Name: Stirling-Harvey Redevelopment Scheme – Public Environmental Review
Date: 12/05/2006
Capture Author: Thomas Leong

Comments:

Polygon

Created to match documented study area with high/acceptable level of accuracy

Accuracy Levels:

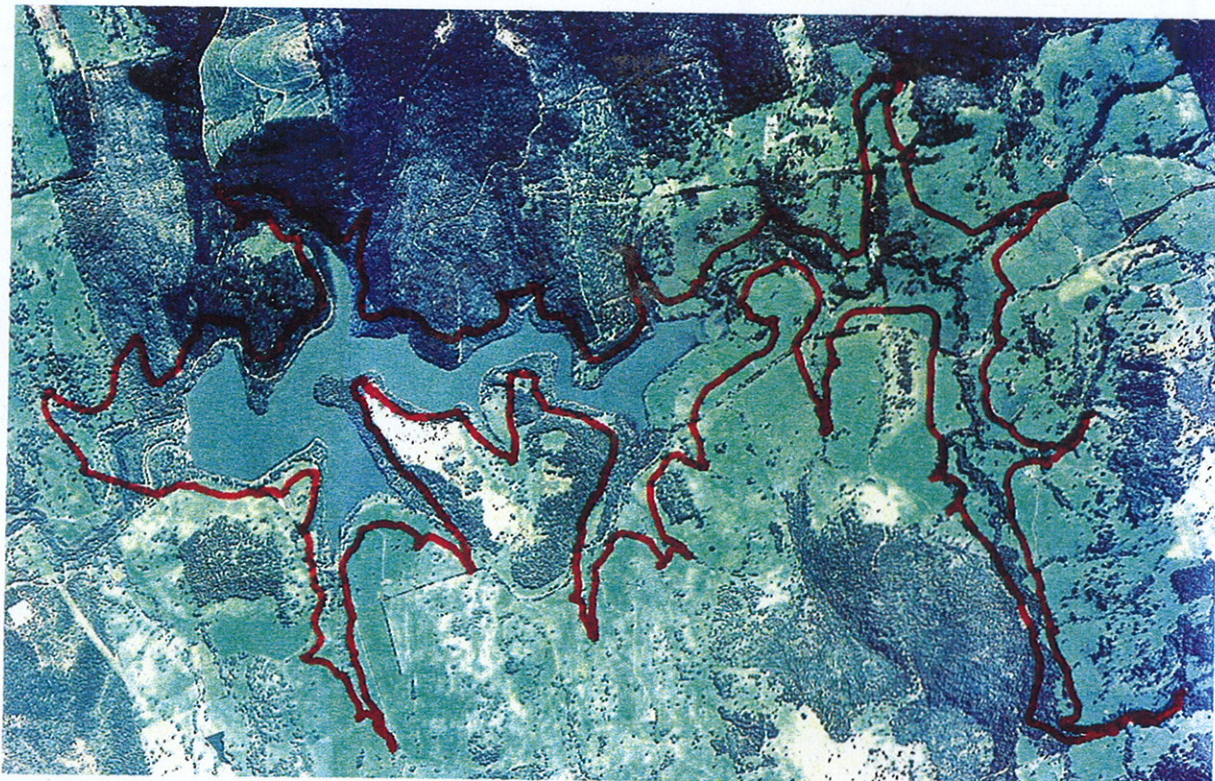
- High = Document contained visual and or described spatial references easily copied, resulting in little or no polygon boundary errors
- Acceptable = Document contained visual and or described spatial references with complex boundaries, resulting in minor boundary errors
- Low = Document contained little or no visual and or described spatial references, resulting in polygon boundary errors

Attributes

Report Info – Captured without problems
Custodial/Contact – Captured without problems
Content – Captured without problems

STIRLING-HARVEY REDEVELOPMENT SCHEME

Public Environmental Review



Prepared for
Water Corporation
by
Welker Environmental Consultancy
March 1999



Welker Environmental
Consultancy

**Full document
available
on request**