

## ENTERED ON GIS

**Name:** Occurrences of Threatened Ecological Communities at Crown Reserve 22614  
**Date:** 11/05/2006  
**Capture Author:** Thomas Leong / Ian Steward

**Comments:**

*Polygon*

Created to match documented study area with high level of accuracy

Accuracy Levels:

- High = Document contained visual and or described spatial references easily copied, resulting in little or no polygon boundary errors
- Acceptable = Document contained visual and or described spatial references with complex boundaries, resulting in minor boundary errors
- Low = Document contained little or no visual and or described spatial references, resulting in polygon boundary errors

*Attributes*

Report Info – Captured without problems

Custodial/Contact – Captured without problems

Content – Captured without problems

## Description of Threatened Ecological Community

### Herb Rich Saline Shrublands in Clay Pans

This community is generally dominated by either *Melaleuca viminea*, *M. uncinata*, *M. cuticularis* or *Casuarina obesa* or a mixture of these species. This community occurs on heavy clay soils that are generally inundated from winter into mid summer. The species composition (*Melaleuca cuticularis* and *Casuarina obesa*) may indicate some saline influence for at least some part of the year. Common herbs such as *Brachyscome bellidioides*, *Centrolepis polygyna*, *Pogonolepis stricta* and *Cotula coronopifolia* are typical of this community. In addition species such as *Angianthus drummondii*, *Eryngium pinnatifidum* subsp. *palustre*, and *Blennospora drummondii* occur in this community in low frequency. A suite of annual flora is seen in this community type as the season progresses. In early spring many of the occurrences of this threatened community are covered by free water up to 30 cm deep. *Cotula coronopifolia* sometimes forms yellow floating mats in some pools while others may be dominated by *Villarsia submersa*. Aquatic species are common in this community type early in the growing season. As the wetland dries a succession of species such as *Centrolepis* spp. and annual *Stylidium* spp. successively germinate, grow and flower, resulting in an extended flowering period of over three months.

Taken from: A Floristic Survey of the Southern Swan Coastal Plain, 1994 by N. Gibson, B. Keighery, G. Keighery, A. Burbidge and M. Lyons.

## Description of Threatened Ecological Community

### ***Eucalyptus calophylla* woodlands on heavy soils of the southern Swan Coastal Plain**

This community occurs on heavy soils of the eastern coastal plain and consists largely of *E. calophylla* forests and woodlands of bushland remnants south of Capel. Typical and common native species include the shrubs *Acacia extensa*, *Gompholobium polymorphum*, *Billardiera variifolia*, *Hibbertia hypericoides* and *Scaevola calliptera*, and the herbs *Agrostocrinum scabrum*, *Austrostipa semibarbata* and *Lomandra purpurea*.

Taken from: A Floristic Survey of the Southern Swan Coastal Plain, 1994 by N. Gibson, B. Keighery, G. Keighery, A. Burbidge and M. Lyons.

## Description of Threatened Ecological Community

### **Southern wet shrublands, Swan Coastal Plain**

Shrublands or open woodlands restricted to small remnants. These occur on seasonally inundated sandy clay soils. The wetter nature of this community is apparent with the occurrence of species such as *Kingia australis*, *Eutaxia virgata* and *Calothamnus lateralis*.

Taken from: A Floristic Survey of the Southern Swan Coastal Plain, 1994 by N. —  
Gibson, B. Keighery, G. Keighery, A. Burbidge and M. Lyons.

## Listing of all Occurrences in the Shire of Busselton

**SCP02**

Southern wet shrublands, Swan Coastal Plain

Has the community been endorsed by the Minister for Environment? Yes

Current Category: Endangered

Occ.	Buffer	Site ID	Datum	Longitude	Latitude
2.	500	AMBR02	GDA94	115° 19' 30"	-33° 44' 13"
		AMBR05	GDA94	115° 19' 33"	-33° 44' 3"
		AMBR07	GDA94	115° 19' 27"	-33° 44' 23"
		myAMBR02	GDA94	115° 19' 29"	-33° 44' 1"
30.	500	myAMBR06	GDA94	115° 19' 40"	-33° 44' 17"
32.	500	myAMBR08	GDA94	115° 19' 20"	-33° 44' 19"

**SCP1b**Eucalyptus calophylla woodlands on heavy soils of the southern  
Swan Coastal Plain

Has the community been endorsed by the Minister for Environment? Yes

Current Category: Vulnerable

Occ.	Buffer	Site ID	Datum	Longitude	Latitude
2.	500	AMBR01	GDA94	115° 19' 20"	-33° 44' 15"
		AMBR09	GDA94	115° 19' 28"	-33° 44' 17"
		myAMBR04	GDA94	115° 19' 26"	-33° 44' 3"
10.	500	AMBR04	GDA94	115° 19' 38"	-33° 44' 1"
		myAMBR01	GDA94	115° 19' 41"	-33° 43' 60" ?
11.	500	myAMBR03	GDA94	115° 19' 30"	-33° 44' 3"
12.	500	AMBR06	GDA94	115° 19' 29"	-33° 44' 23"
13.	500	myAMBR07	GDA94	115° 19' 20"	-33° 44' 2"
15.	500	myAMBR09	GDA94	115° 19' 46"	-33° 44' 19"

**SCP07**

Herb rich saline shrublands in clay pans

Has the community been endorsed by the Minister for Environment? Yes

Current Category: Vulnerable

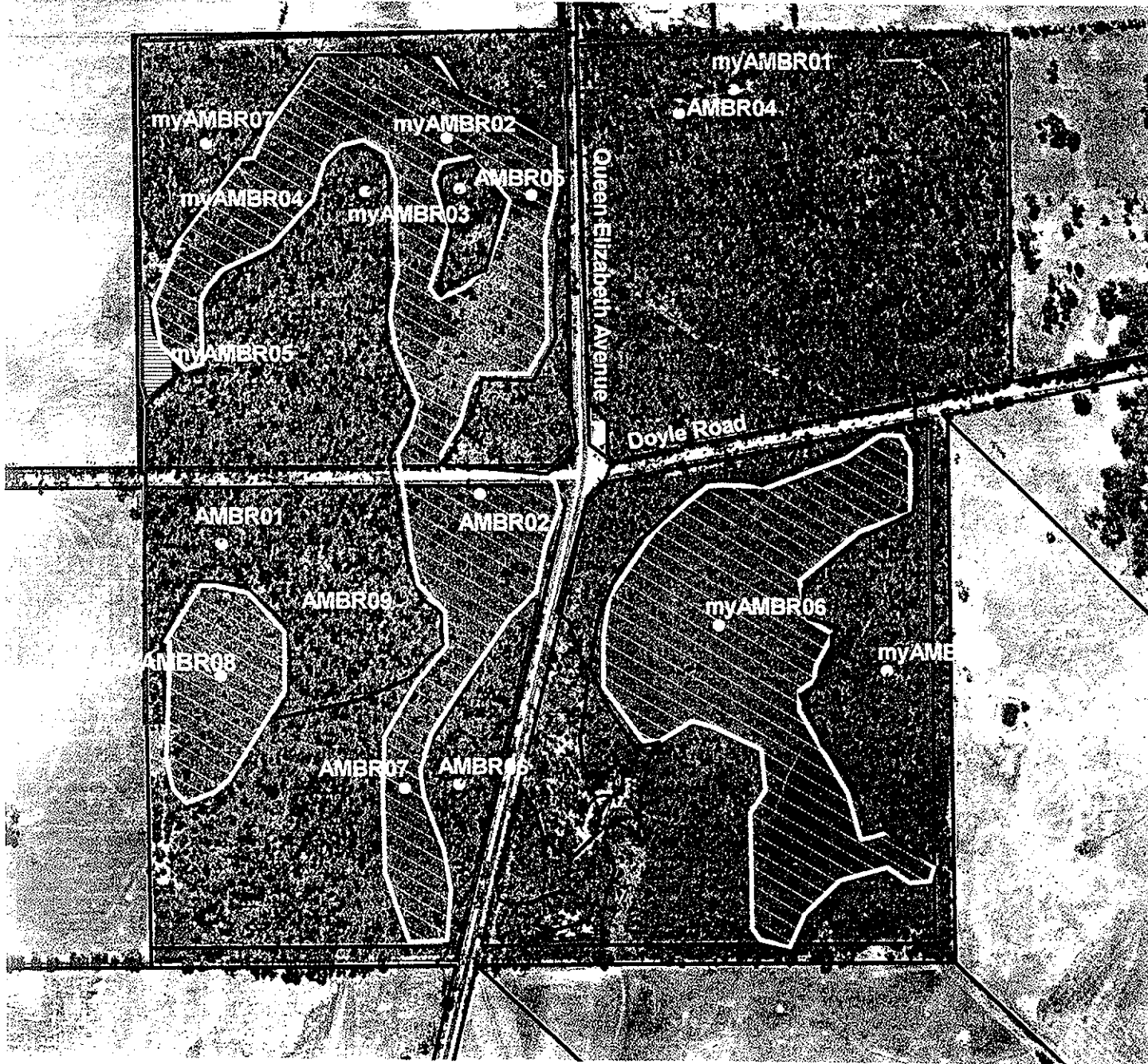
Occ.	Buffer	Site ID	Datum	Longitude	Latitude
22.	500	myAMBR05	GDA94	115° 19' 18"	-33° 44' 9"



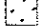

All sites were surveyed with permission at the time from the land owner/manager.

Sites above and on the map are of two kinds.

Sites beginning AMBR are study plots at which the Threatened Ecological Community has been identified. Sites beginning myAMBR are locations within the occurrence at which the Threatened Ecological Community has been inferred.

# Occurrences of Threatened Ecological Communities at Crown Reserve 22614



-  Approximate location of community SCP07
-  Approximate location of community SCP02
-  Approximate location of community SCP1b
-  Property boundary

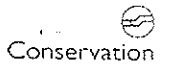
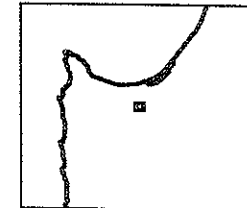


1: 6 000  
1cm represents 60m

Projection: Universal Transverse Mercator, *GDA*  
MGA Zone 50, Datum: GDA94  
0 0.2 Kilometres



Locality Map



Produced by Mia Marley  
Under the Direction of  
Keiran McNamara Executive Director  
Department of Conservation & Land Management

The Dept. of Conservation and Land Management does not warrant that this map is without flaw of any kind and disclaims all liability for any errors, loss or other consequences that may arise from relying on any information depicted.

Job Ref. 0205, Produced at 10:54 on February 21, 2005