

ENTERED ON GIS

Name: Occurrence of the Threatened Ecological Community 'Shrublands on southern Swan Coastal Plain Ironstones (Busselton area)' at Jindong Treeton Road and Gale Road Road Reserve
Date: 10/05/2006
Capture Author: Thomas Leong

Comments:

Polygon

Created to match documented study area with high level of accuracy

Accuracy Levels:

- High = Document contained visual and or described spatial references easily copied, resulting in little or no polygon boundary errors
- Acceptable = Document contained visual and or described spatial references with complex boundaries, resulting in minor boundary errors
- Low = Document contained little or no visual and or described spatial references, resulting in polygon boundary errors

Attributes

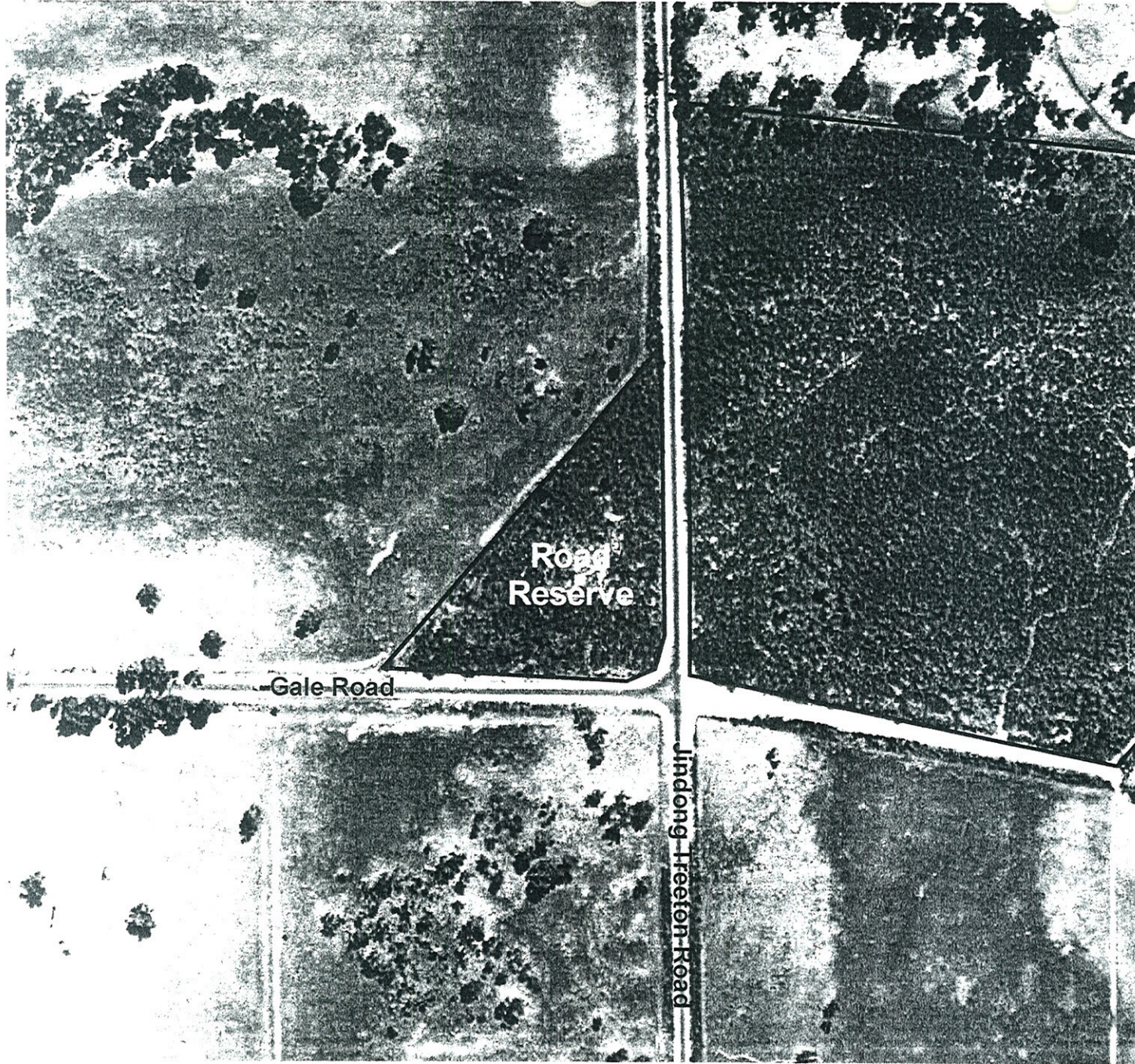
Report Info – Captured without problems

Custodial/Contact – Captured without problems

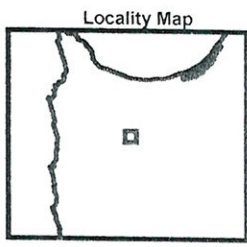
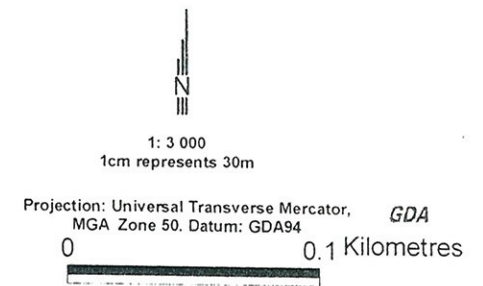
Content – Captured without problems

BUSSELTON.

Occurrence of the Threatened Ecological Community 'Shrublands on southern Swan Coastal Plain Ironstones (Busselton area)' at Jindong Treeton Road and Gale Road Road Reserve



- Approximate location of community
- Property boundary



Produced by Mia Morley
Under the Direction of
Keiran McNamara Executive Director
Department of Conservation & Land Management

The Dept. of Conservation and Land Management does not guarantee that this map is without flaw of any kind and disclaims all liability for any errors, loss or other consequence which may arise from relying on any information depicted

Description of Threatened Ecological Community

Shrublands on southern Swan Coastal Plain Ironstones (Busselton area)

Current Category: Critically Endangered

This species-rich plant community is located on seasonal wetlands on ironstone and heavy clay soils on the Swan Coastal Plain near Busselton. Much of the species diversity comes from annuals and geophytes. Typical and common native species are the shrubs *Kunzea* aff. *micrantha* (B.J.Keighery and N.Gibson 040), *Pericalymma ellipticum*, *Hakea* sp. Williamson (B.J.Keighery and N.Gibson 226), *Hemiandra pungens* and *Viminaria juncea*, and the herbs *Aphelia cyperoides* and *Centrolepis aristata*. Many taxa in the community are highly restricted in distribution, dieback susceptible and/or are obligate seeders.

Taken from: Draft Interim Recovery Plan 2002 by Val English.