

ENTERED ON GIS

Name: Occurrences of the Threatened Ecological Community –
'Shrublands on southern Swan Coastal Plain Ironstones' at
Wonnerup Rail Reserve 12969
Date: 11/05/2006
Capture Author: Thomas Leong / Ian Steward

Comments:

Polygon

Created to match documented study area with high level of accuracy

Accuracy Levels:

- High = Document contained visual and or described spatial references easily copied, resulting in little or no polygon boundary errors
- Acceptable = Document contained visual and or described spatial references with complex boundaries, resulting in minor boundary errors
- Low = Document contained little or no visual and or described spatial references, resulting in polygon boundary errors

Attributes

Report Info – Captured without problems

Custodial/Contact – Captured without problems

Content – Captured without problems

Description of Threatened Ecological Community

Shrublands on southern Swan Coastal Plain Ironstones (Busselton area)

This species-rich plant community is located on seasonal wetlands on ironstone and heavy clay soils on the Swan Coastal Plain near Busselton. Much of the species diversity comes from annuals and geophytes. Typical and common native species are the shrubs *Kunzea* aff. *micrantha* (B.J.Keighery and N.Gibson 040), *Pericalymma ellipticum*, *Hakea* sp. Williamson (B.J.Keighery and N.Gibson 226), *Hemiandra pungens* and *Viminaria juncea*, and the herbs *Aphelia cyperoides* and *Centrolepis aristata*. Many taxa in the community are highly restricted in distribution, dieback susceptible and/or are obligate seeders.

Taken from: Draft Interim Recovery Plan 2002 by Val English.

Description of Threatened Ecological Community

***Eucalyptus calophylla* woodlands on heavy soils of the southern Swan Coastal Plain**

This community occurs on heavy soils of the eastern coastal plain and consists largely of *E. calophylla* forests and woodlands of bushland remnants south of Capel. Typical and common native species include the shrubs *Acacia extensa*, *Gompholobium polymorphum*, *Billardiera variifolia*, *Hibbertia hypericoides* and *Scaevola calliptera*, and the herbs *Agrostocrinum scabrum*, *Austrostipa semibarbata* and *Lomandra purpurea*. —

Taken from: A Floristic Survey of the Southern Swan Coastal Plain, 1994 by N. Gibson, B. Keighery, G. Keighery, A. Burbidge and M. Lyons.

Listing of all Occurrences in the Shire of Busselton

SCP10b

Shrublands on southern Swan Coastal Plain Ironstones (Busselton area)

Has the community been endorsed by the Minister for Environment? Yes

Current Category: Critically Endangered

Occ.	Buffer	Site ID	Datum	Longitude	Latitude
11.	500	WONN03	GDA94	115° 34' 55"	-33° 39' 59"
3.	500	WONN04	GDA94	115° 34' 18"	-33° 39' 57"
4.	500	WONN05	GDA94	115° 32' 32"	-33° 39' 25"
5.	500	WONN06	GDA94	115° 31' 41"	-33° 39' 9"
12.	500	WONNEW1	GDA94	115° 31' 55"	-33° 39' 13"

SCP1b

Eucalyptus calophylla woodlands on heavy soils of the southern Swan Coastal Plain

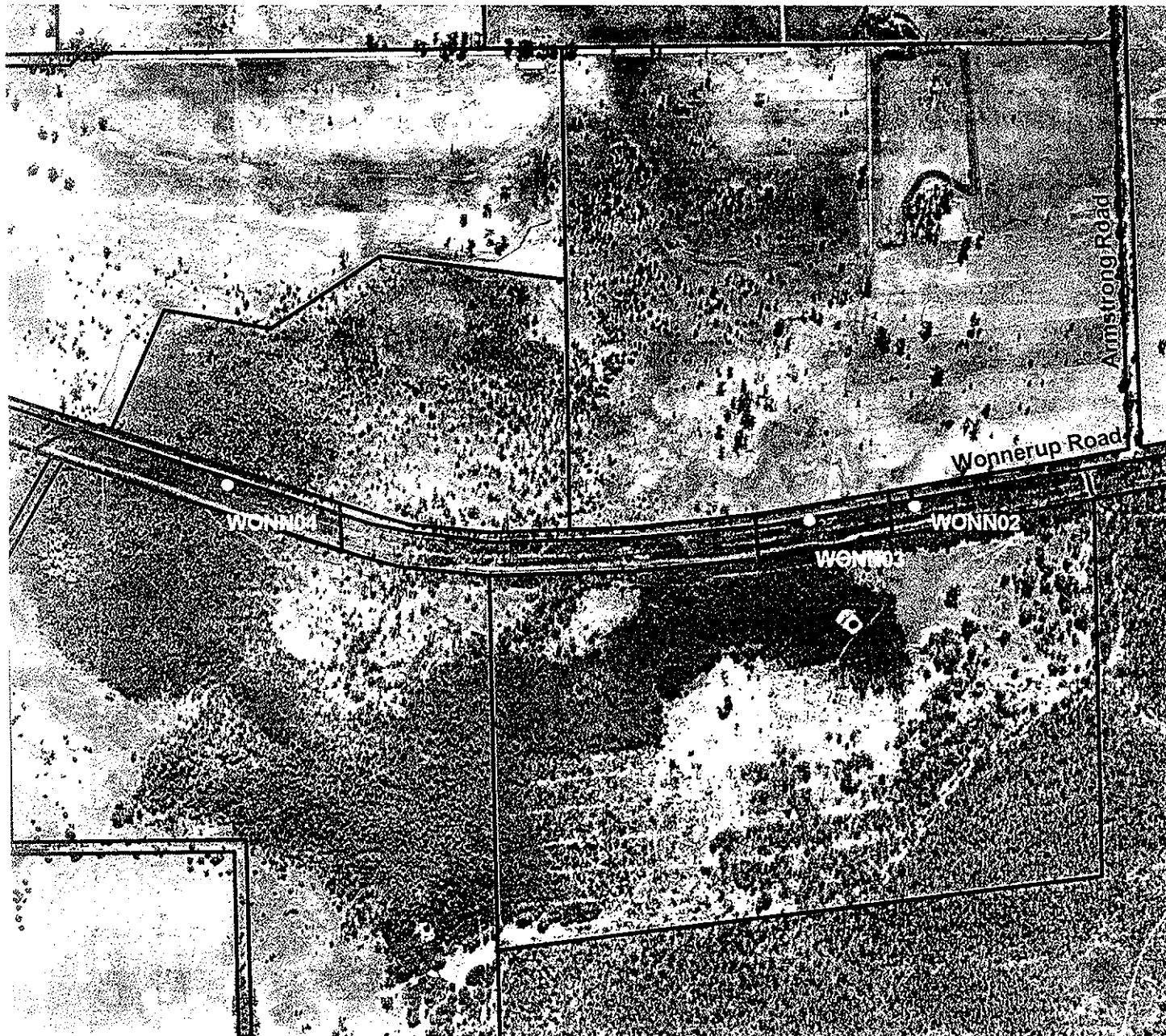
Has the community been endorsed by the Minister for Environment? Yes

Current Category: Vulnerable

Occ.	Buffer	Site ID	Datum	Longitude	Latitude
6.	500	WONN02	GDA94	115° 35' 2"	-33° 39' 58"

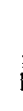
The above coordinates represent sites within the occurrence.

All sites were surveyed with permission at the time from the land owner/manager.



Occurrences of the Threatened Ecological Community - 'Shrublands on southern Swan Coastal Plain Ironstones' at Wonnerup Rail Reserve 12969 and Wonnerup Road Reserve

- Approximate location of community
- Property boundary

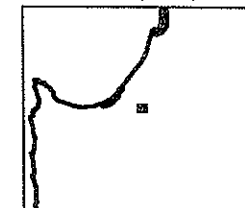


1: 10 000
1cm represents 100m

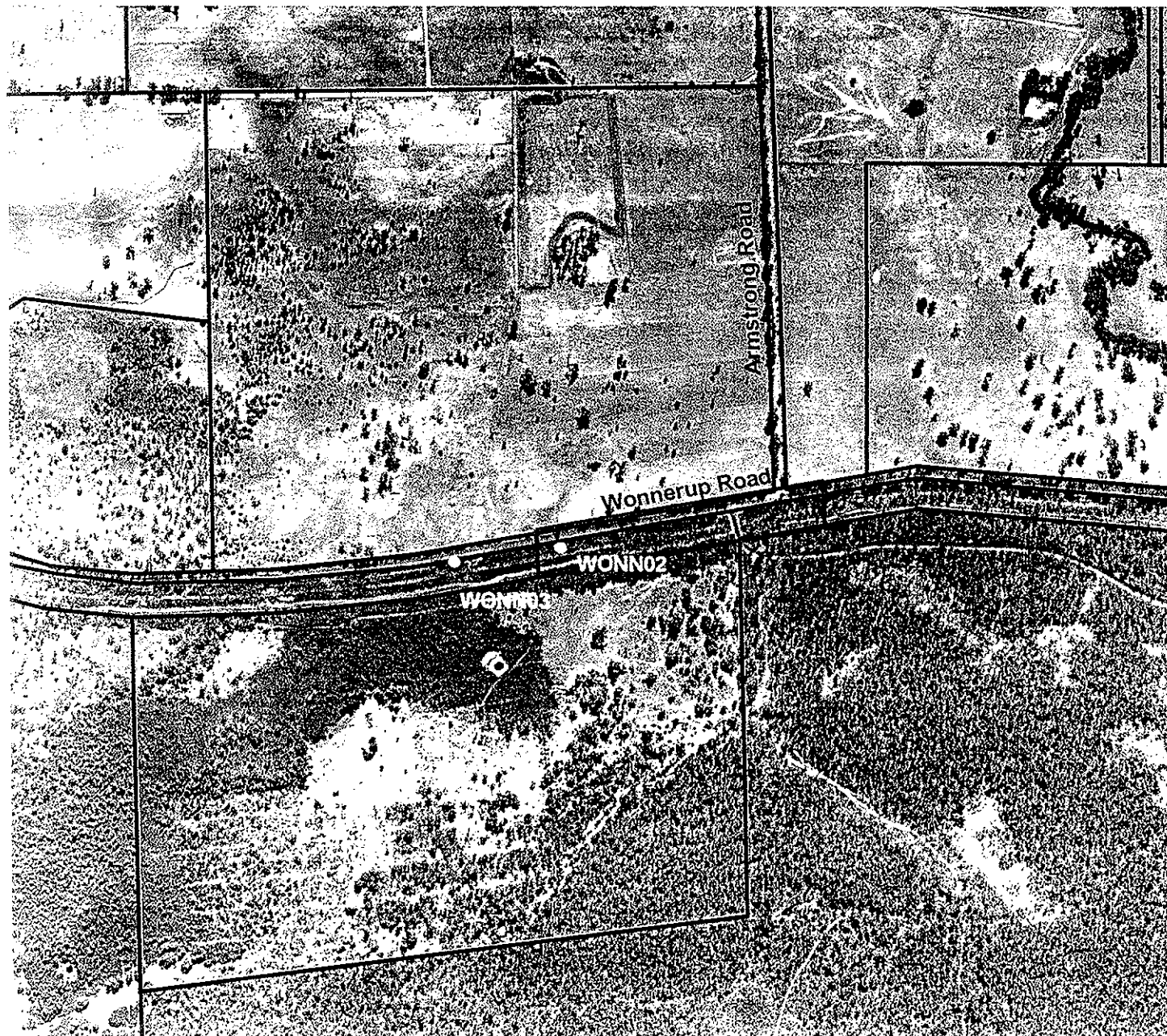
Projection: Universal Transverse Mercator, **GDA**
MGA Zone 50. Datum: GDA94

0 0.4 Kilometres

Locality Map



Produced by Mia Morley
Under the Direction of
Keiran McNamara Executive Director
Department of Conservation & Land Management



Occurrence of the Threatened Ecological Community - *Eucalyptus calophylla* woodlands on heavy soils of the southern Swan Coastal Plain' at Wonnerup Rail Reserve 12969 and Wonnerup Road Reserve

- Approximate location of community
- Property boundary

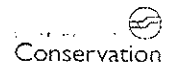
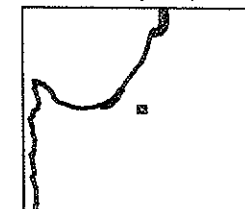


1: 10 000
1cm represents 100m

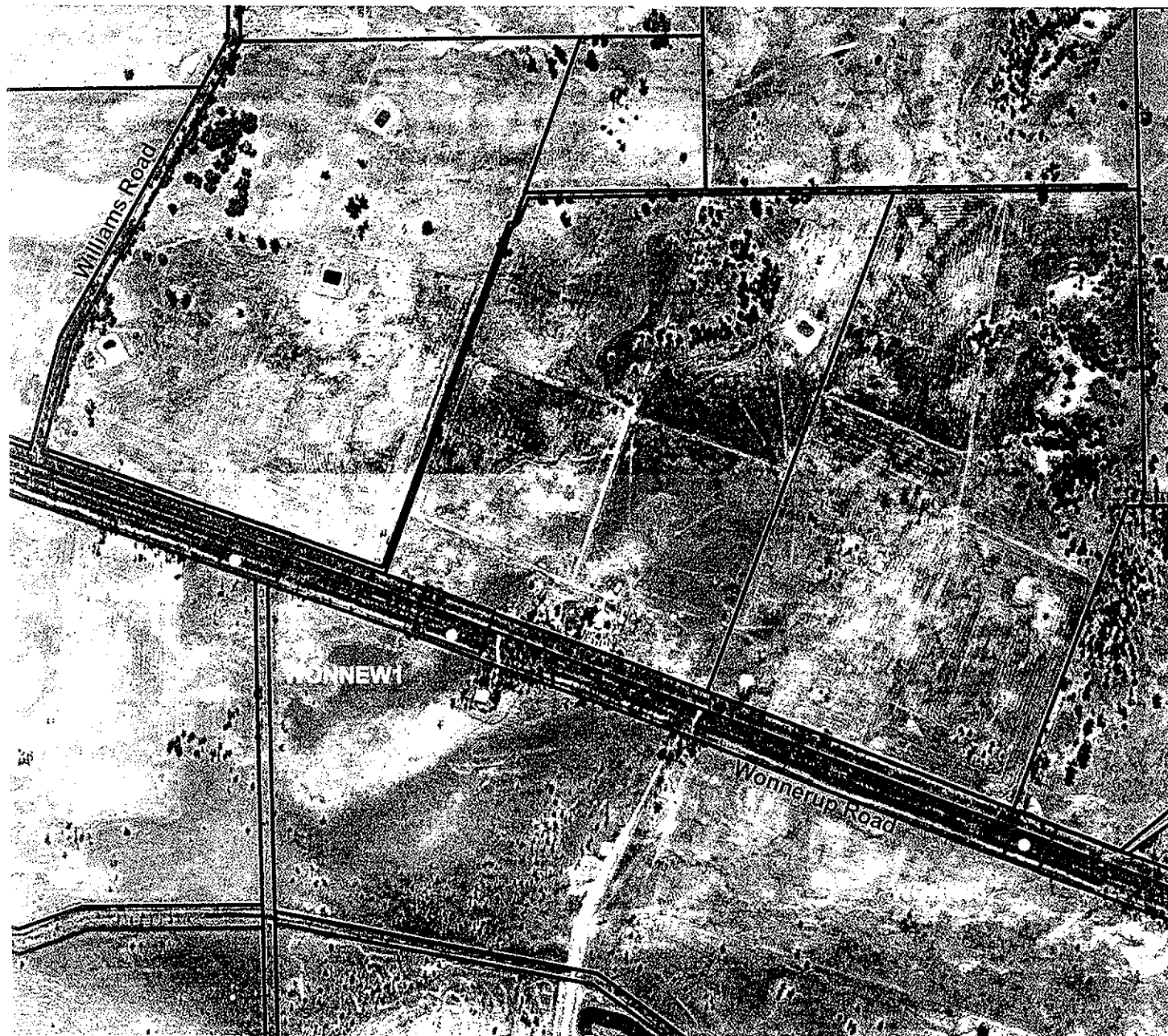
Projection: Universal Transverse Mercator, GDA
MGA Zone 50. Datum: GDA94

0 0.4 Kilometres

Locality Map



Produced by Mia Morley
Under the Direction of
Kieran McNamara Executive Director
Department of Conservation & Land Management



**Occurrences of the Threatened
Ecological Community -
'Shrublands on southern
Swan Coastal Plain Ironstones'
at Wonnerup Rail Reserve 12969
and Wonnerup Road Reserve**

- Approximate location of community
- Property boundary

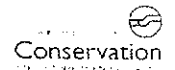
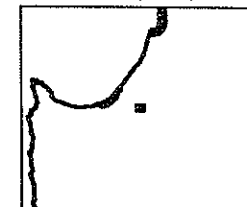


1: 10 000
1cm represents 100m

Projection: Universal Transverse Mercator, GDA
MGA Zone 50. Datum: GDA94

0 0.4 Kilometres

Locality Map



Produced by Mia Morley
Under the Direction of
Keiran McNamara Executive Director
Department of Conservation & Land Management

Description of Threatened Ecological Community

***Eucalyptus calophylla* woodlands on heavy soils of the southern Swan Coastal Plain**

This community occurs on heavy soils of the eastern coastal plain and consists largely of *E. calophylla* forests and woodlands of bushland remnants south of Capel. Typical and common native species include the shrubs *Acacia extensa*, *Gompholobium polymorphum*, *Billardiera variifolia*, *Hibbertia hypericoides* and *Scaevola calliptera*, and the herbs *Agrostocrinum scabrum*, *Austrostipa semibarbata* and *Lomandra purpurea*.

Taken from: A Floristic Survey of the Southern Swan Coastal Plain, 1994 by N. Gibson, B. Keighery, G. Keighery, A. Burbidge and M. Lyons.

Description of Threatened Ecological Community

Shrublands on southern Swan Coastal Plain Ironstones (Busselton area)

This species-rich plant community is located on seasonal wetlands on ironstone and heavy clay soils on the Swan Coastal Plain near Busselton. Much of the species diversity comes from annuals and geophytes. Typical and common native species are the shrubs *Kunzea* aff. *micrantha* (B.J.Keighery and N.Gibson 040), *Pericalymma ellipticum*, *Hakea* sp. Williamson (B.J.Keighery and N.Gibson 226), *Hemiandra pungens* and *Viminaria juncea*, and the herbs *Aphelia cyperoides* and *Centrolepis aristata*. Many taxa in the community are highly restricted in distribution, dieback susceptible and/or are obligate seeders.

Taken from: Draft Interim Recovery Plan 2002 by Val English.

Listing of all Occurrences in the Shire of Busselton

SCP10b

Shrublands on southern Swan Coastal Plain Ironstones (Busselton area)

Has the community been endorsed by the Minister for Environment? Yes

Current Category: Critically Endangered

Occ.	Buffer	Site ID	Datum	Longitude	Latitude
11.	500	WONN03	GDA94	115° 34' 55"	-33° 39' 59"
3.	500	WONN04	GDA94	115° 34' 18"	-33° 39' 57"
4.	500	WONN05	GDA94	115° 32' 32"	-33° 39' 25"
5.	500	WONN06	GDA94	115° 31' 41"	-33° 39' 9"
12.	500	WONNEW1	GDA94	115° 31' 55"	-33° 39' 13"

SCP1b

Eucalyptus calophylla woodlands on heavy soils of the southern Swan Coastal Plain

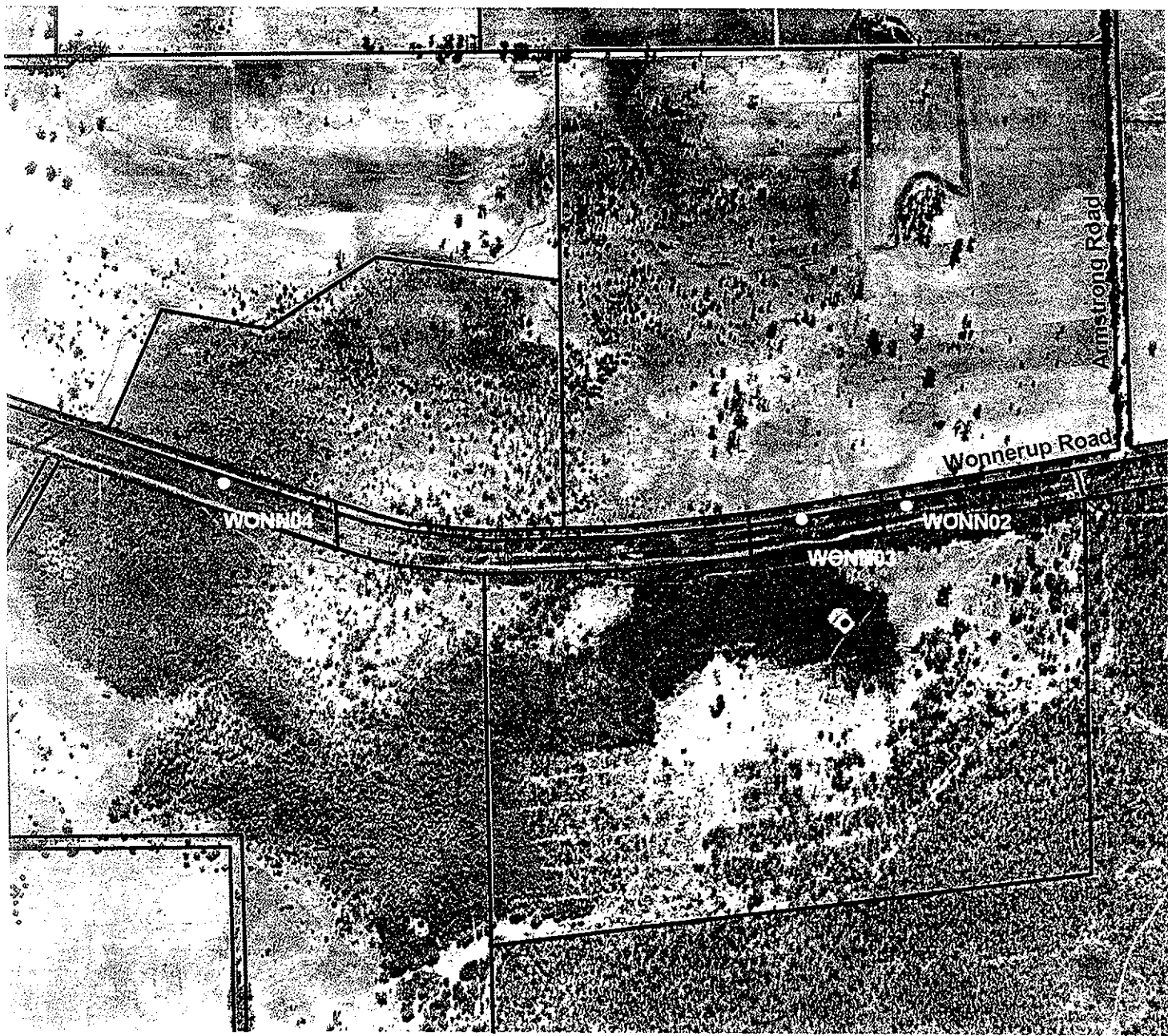
Has the community been endorsed by the Minister for Environment? Yes

Current Category: Vulnerable

Occ.	Buffer	Site ID	Datum	Longitude	Latitude
6.	500	WONN02	GDA94	115° 35' 2"	-33° 39' 58"

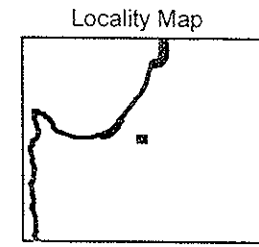
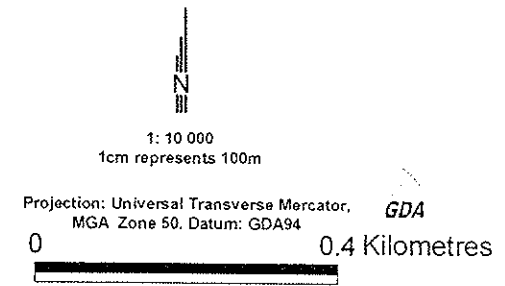
The above coordinates represent sites within the occurrence.

All sites were surveyed with permission at the time from the land owner/manager.



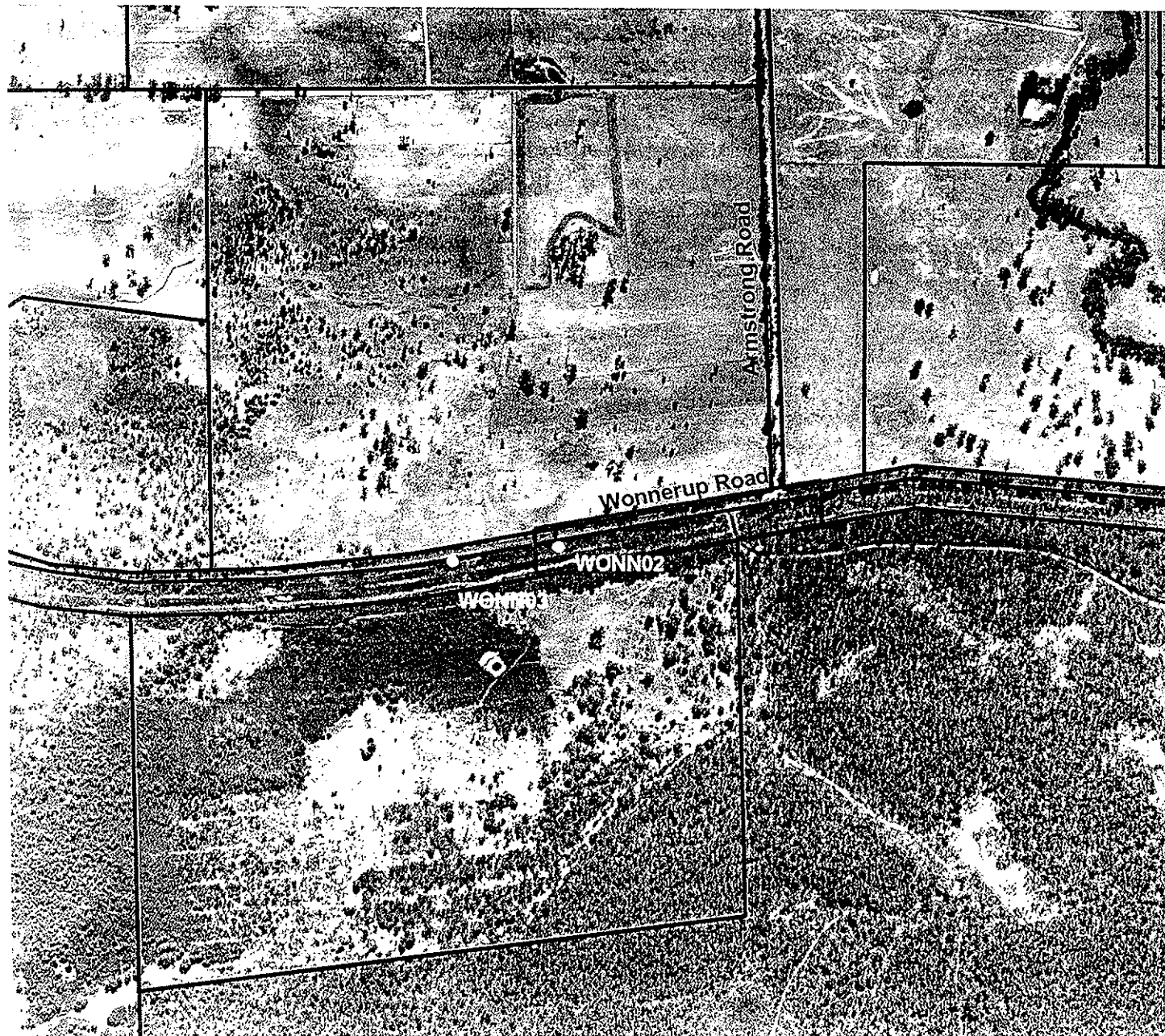
Occurrences of the Threatened Ecological Community - 'Shrublands on southern Swan Coastal Plain Ironstones' at Wonnerup Rail Reserve 12969

- Approximate location of community
- Property boundary



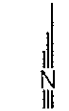
Produced by Mia Morley
 Under the Direction of
 Keiran McNamara Executive Director
 Department of Conservation & Land Management

The Dept. of Conservation and Land Management does not give all liability for any errors, loss or other consequence which arise from relying on any information depicted



Occurrence of the Threatened
Ecological Community -
'Eucalyptus calophylla
woodlands on heavy soils
of the southern Swan Coastal Plain'
at Wonnerup Rail Reserve 12969

- Approximate location of community
- Property boundary

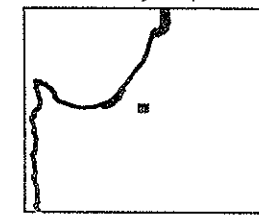


1: 10 000
1cm represents 100m

Projection: Universal Transverse Mercator, *GDA*
MGA Zone 50. Datum: GDA94

0 0.4 Kilometres

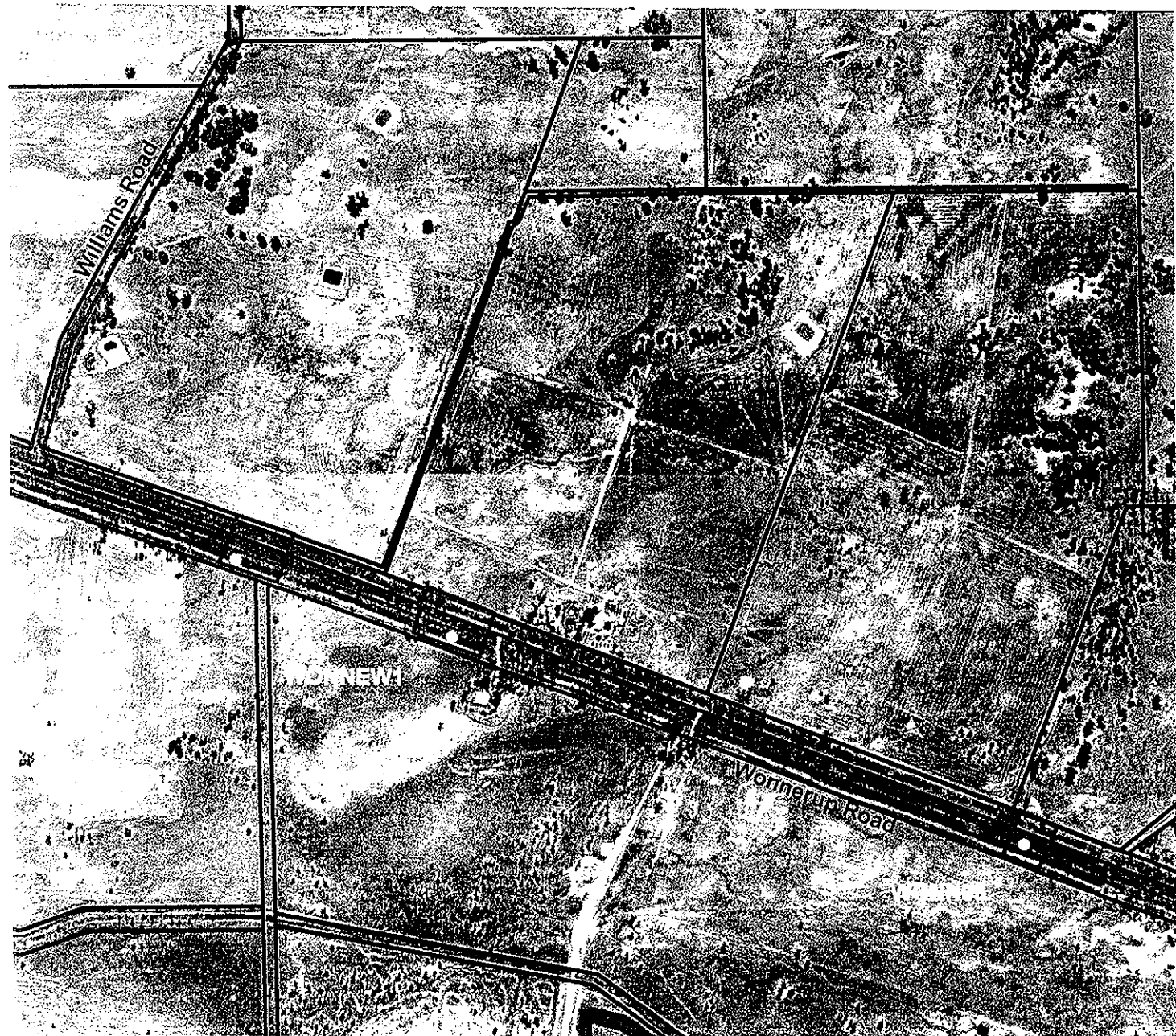
Locality Map



Conservation
Department of Conservation and Land Management

Produced by Mia Morley
Under the Direction of
Kieran McNamara Executive Director
Department of Conservation & Land Management

The Dept of Conservation and Land Management does not guarantee that this map is without flaw of any kind and disclaims all liability for any errors, loss or other consequence which may arise from relying on any information depicted.



Occurrences of the Threatened
Ecological Community -
'Shrublands on southern
Swan Coastal Plain Ironstones'
at Wonnerup Rail Reserve 12969

- Approximate location of community
- Property boundary

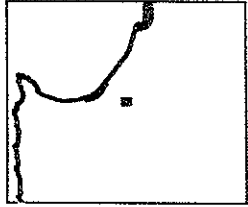


1: 10 000
1cm represents 100m

Projection: Universal Transverse Mercator, *GDA*
MGA Zone 50, Datum: GDA94



Locality Map



Produced by Mia Morley
Under the Direction of
Kerran McNamara Executive Director
Department of Conservation & Land Management

The Dept. of Conservation and Land Management does not guarantee this map is without flaw of any kind and disclaims all liability for any errors, loss or other consequence which may result from relying on any information depicted.