

ENTERED ON GIS

Name: Occurrence of the Threatened Ecological Community –
'Shrublands on southern Swan Coastal Plain Ironstones' at Sussex
Location 2675
Date: 11/05/2006
Capture Author: Thomas Leong

Comments:

Polygon

Created to match documented study area with high level of accuracy

Accuracy Levels:

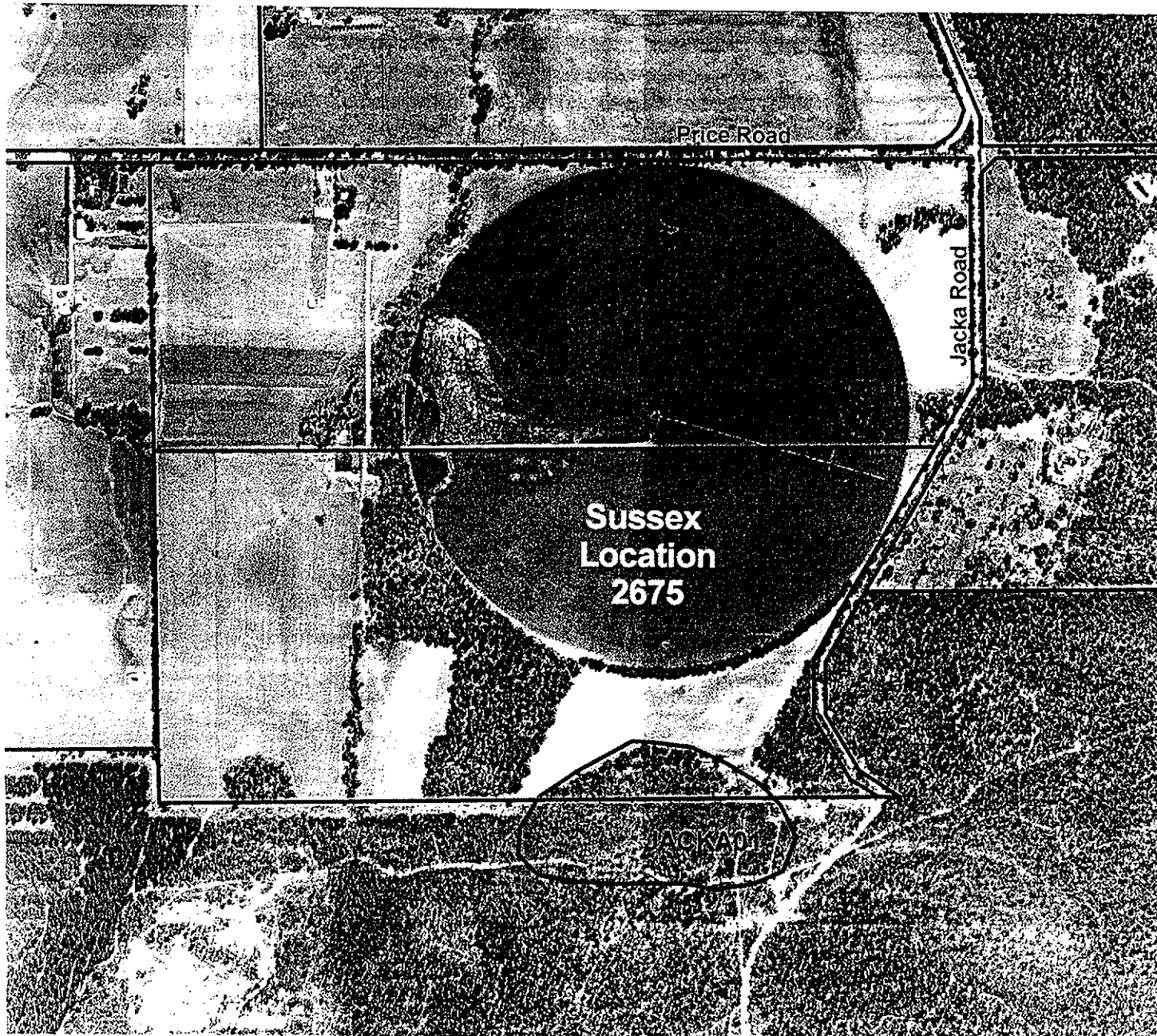
- High = Document contained visual and or described spatial references easily copied, resulting in little or no polygon boundary errors
- Acceptable = Document contained visual and or described spatial references with complex boundaries, resulting in minor boundary errors
- Low = Document contained little or no visual and or described spatial references, resulting in polygon boundary errors

Attributes

Report Info – Captured without problems

Custodial/Contact – Captured without problems

Content – Captured without problems



Occurrence of the Threatened Ecological Community - 'Shrublands on southern Swan Coastal Plain Ironstones' at Sussex Location 2675

- Approximate location of community
- Property boundary

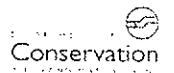
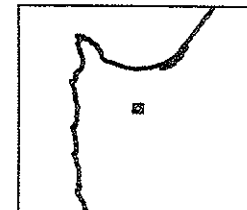


1: 10 000
1cm represents 100m

Projection: Universal Transverse Mercator, GDA
MGA Zone 50, Datum: GDA94

0 0.4 Kilometres

Locality Map



Produced by Mia Morley
Under the Direction of
Keiran McNamara Executive Director
Department of Conservation & Land Management.

Description of Threatened Ecological Community

Shrublands on southern Swan Coastal Plain Ironstones

This species-rich plant community is located on seasonal wetlands on ironstone and heavy clay soils on the Swan Coastal Plain near Busselton. Much of the species diversity comes from annuals and geophytes. Typical and common native species are the shrubs *Kunzea* aff. *micrantha* (B.J.Keighery and N.Gibson 040), *Pericalymma ellipticum*, *Hakea* sp. Williamson (B.J.Keighery and N.Gibson 226), *Hemiandra pungens* and *Viminaria juncea*, and the herbs *Aphelia cyperoides* and *Centrolepis aristata*. Many taxa in the community are highly restricted in distribution, dieback susceptible and/or are obligate seeders.

Taken from: Draft Interim Recovery Plan 2002 by Val English.