

12/5-5
13/2-6
13/5-9
13/5-8
13/4-4
13/4-5
13/4-6

Ag



←

→ 13/4-6

7-3

→ 6/1-2

4/4-5 ←

4/4-6 ←

9

12/5-5
↑

13/2-6
↑

13/5-9
↑

13/5-8
↑

↑

13/4-4
↑

Ag 14/8/08
↑

13/4-5
↑

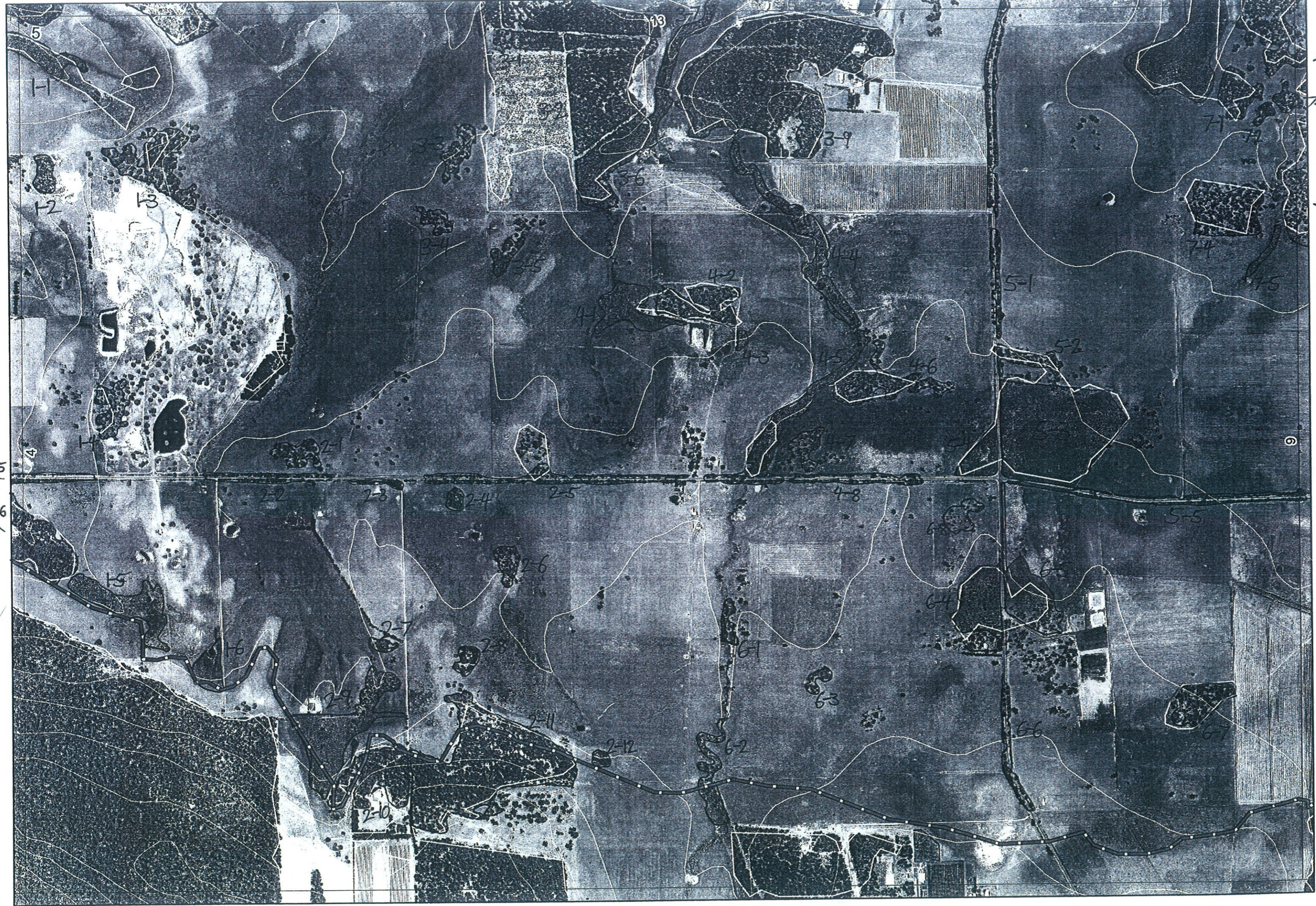
13/4-6
↑

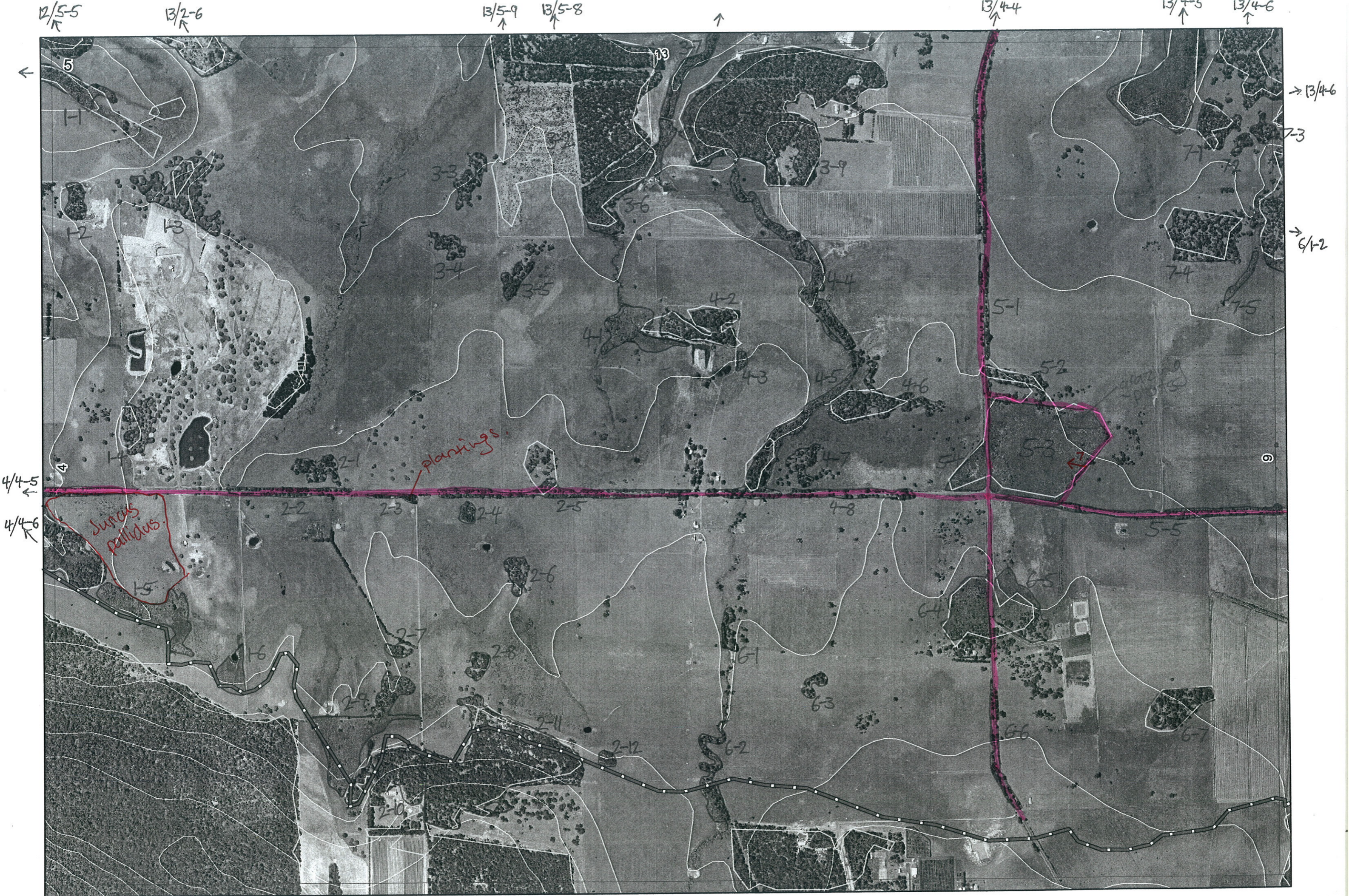
←

→ 13/4-6

→ 7-3

→ 6/1-2





12/5-5
↑

13/2-6
↑

13/5-9
↑

13/5-8
↑

↑

13/4-4
↑

13/4-5
↑

13/4-6
↑

←

→ 13/4-6

→ 7-3

→ 6/1-2

5

H

H2

H3

4

Junco pallidus

H5

H6

2-10

2-2

2-3

2-4

2-5

2-6

2-7

2-8

2-11

2-12

3-3

3-4

3-5

3-6

4-1

4-2

4-3

4-4

4-5

4-6

4-7

4-8

5-1

5-2

5-3

5-5

6-4

6-1

6-3

6-2

6-6

6-5

6-7

7-1

7-2

7-4

7-5

13

3-9

9

plantings

7

2

4/7 AN, EH, Richard Clark

Map Sheet Number 5

Pre Field Recorder(s) AW

Field Recorder(s) 5/7 AN, EH, ^{wide} ~~Richard~~ Swan Bioplan Vegetation Mapping Data

R E M	RE M2	XM AP	LIN TYPE	L I N E A R	M L U	U N I T S	U P L A N D ?	W E T L A N D ?	V I S I T ?	DETAIL/ Area Name	VEG CON	Field date 2006	OBS From	YNOTASS	D E T V I S R E Q D	COMMENTS	VEG STRU C/ DENS	FCT	DOMINANTS		
																			1	2	3
X2	12	-	-	-	WS	1	-	Y			CD/D	4/7	dist						Eucal	Eucmar	
X3	1	-	-	-	WS	1	Y	-			5	5/7	dist				F		Eucmar	Eucal	
X3	2	-	-	-	WS	1	Y	-			4	5/7	dist				F		Eucmar	Eucal	
X3	3	-	-	-	WS	1	Y	-			Same as 3.4						W		Eucal		
X3	4	-	-	-	WS	1	Y	-			CD/D	4/7	dist				W		Eucal	Eucmar	
X3	5	-	-	-	WS	1	Y	-			D	4/7	dist				F		Eucal	Eucmar	
X3	6	-	channel	Y	WS	1	-	Y			4	5/7	dist						Eucmar Eucal (F)	Agolin SH ②	
X3	7	Y	channel	Y	WS	1	-	Y			4.3	5/7	dist				SH		Agolin		
X3	8	-	-	-	WS	1	Y	-			4	5/7	dist				F		Eucmar	Eucal	
X3	9	-	-	-	WS	1	Y	-			5	5/7	dist				F		Eucmar	Eucal	
X4	1	-	-	-	WS	1	-	Y			D/G	4/7	dist				Sh		Agolin	Eucal	
X4	2	-	-	-	WS	1	Y	-			D	4/7	dist				F		Eucal	Eucmar	
X4	3	-	-	-	WS	1	-	Y			D	4/7	dist				W		Agolin		
X4	4	-	channel	Y	WS	1	-	Y	Y		4.7	5/7	dist				SH		Agolin		
X4	5	-	channel road	Y	WS	2	Y	Y	Y		D	4/7	edge				F		Eucal	Agolin	
											D	4/7	edge				SH		Agolin		
X4	6	-	-	-	WS	1	Y	-			D	4/7	dist				F		Eucal	Eucmar	Actofras
X4	7	-	-	-	WS	1	Y	-			CD/D	4/7	dist				W		Eucmar	Eucmar	

Summary/General Comments

3

4/7 AW, EH, Richard Clark

Map Sheet Number 5

Pre Field Recorder(s) AW

Field Recorder(s) 5/7 AW, EH, Julie Collier

Swan Bioplan Vegetation Mapping Data

REM	RE M2	XM AP	LIN TYPE	LINEAR	MLU	UNITS	UPLAND?	WETLAND?	VISIT?	DETAIL/ Area Name	VEG CON	Field date	OBS From	YNOTASS	DETVISREQD	COMMENTS	VEG STRUC/DENS	FCT	DOMINANTS		
																			1	2	3
X48	-	road	Y	WS	1	Y	-	-	-		D	4/7	edge			W		Eucal	Euc mar		
X51	-	road	Y	WS	1	Y	-	Y	-		5	5/7	edge			W		Eucal	Euc mar	Eucha	
X52	-	-	-	WS	1	Y	-	-	-		CD	4/7	edge			W		Eucal	Euc mar	Allofras	
X53	-	-	-	WS	3	Y	Y	-	-		VG	4/7	edge	Y	rabbits	W		Eucal	Allfra	Euchaem	
											VG	4/7	edge			SH	10b	Drysquang	Hobold	Peroll	
											VG	4/7	edge			SH		Hok cerat. Cyaequ	Euc mar	Bashoo	Hak old
X54	-	-	-	WS	1	-	Y	-	-		VG	4/7	edge			SH	10b	Kun recurva	Hobold	Peroll	
X55	Y	road	Y	WS	3	Y	Y	Y	-		VG	5/7	edge		Agppar, Agolin Acalia, Xyris sp., Beaspa, Kunrec? Cyaequ	SHD FD	10b	Hobold Eucal	Peroll Eucmar	Lox mag Allfra	
X64	-	-	-	WS	2	Y	Y	-	-		G	4/7	edge	Y		SH	10b	Allo thy	Hobold	Peroll	
											G	4/7	edge			W		Euchaem	Allofras		
X61	-	channel	Y	WS	1	-	Y	-	-		CD-0	4/7	aerial			W		Eucal			
X62	-	channel	Y	WS	1	-	Y	-	-		D	4/7	aerial			SH		Agolin	Eucpat		
X63	-	-	-	WS	1	Y	-	-	-		CD	4/7	dist			F		Euchaem	Allofra		
X65	-	-	-	WS	2	Y	Y	-	-		G	4/7	edge		Tambookie grass	SH	10b	Hobold	Euc pat	Kunrecurva	
X66	-	road	Y	WS	1	Y	-	-	-		G	4/7	edge			F		Euchaem	Euc mar	Agp parv	
X67	-	-	-	WS	1	Y	-	-	-		CD/D	4/7	dist			F		Eucal	Eucmar		
X68	-	-	-			1	Y	-	-		D	4/7	dist			W		Euchaem?	Hak old		

Summary/General Comments

4

417 AW, EH, Richard Clark

Map Sheet Number 5

Pre Field Recorder(s) AW

Field Recorder(s) 5/7 AW, EH, side Swan Bioplan Vegetation Mapping Data

R E M	RE M2	XM AP	LIN TYPE	L I N E A R	M L U	U N I T S	U P L A N D ?	W E T L A N D ?	V I S I T ?	DETAIL/ Area Name	VEG CON	Field date	OBS From	YNOTASS	D E T V I S R E Q D	COMMENTS	VEG STRUC/ DENS	FCT	DOMINANTS		
																			1	2	3
X71	-	-	-	-	WS	1	Y	-	N		5	5/7	aerial	AW			F		Eucal	EUCMAR	All Gra
X72	-	-	-	-	WS	1	Y	-	N		5	5/7	aerial	AW			F		Eucal	EUCMAR	All Gra
X73	Y	-	-	-	WS	1	Y	-	N		5	5/7	aerial	AW			F		Eucal	EUCMAR	All Gra
X74	-	-	-	-	WS	1	Y	-			D	4/7	dist				W		Eucal	Eucmar	
X75	-	-	channel	Y	WS	1	-	Y			D/G	4/7	dist				SH		Ajo lin		

Summary/General Comments