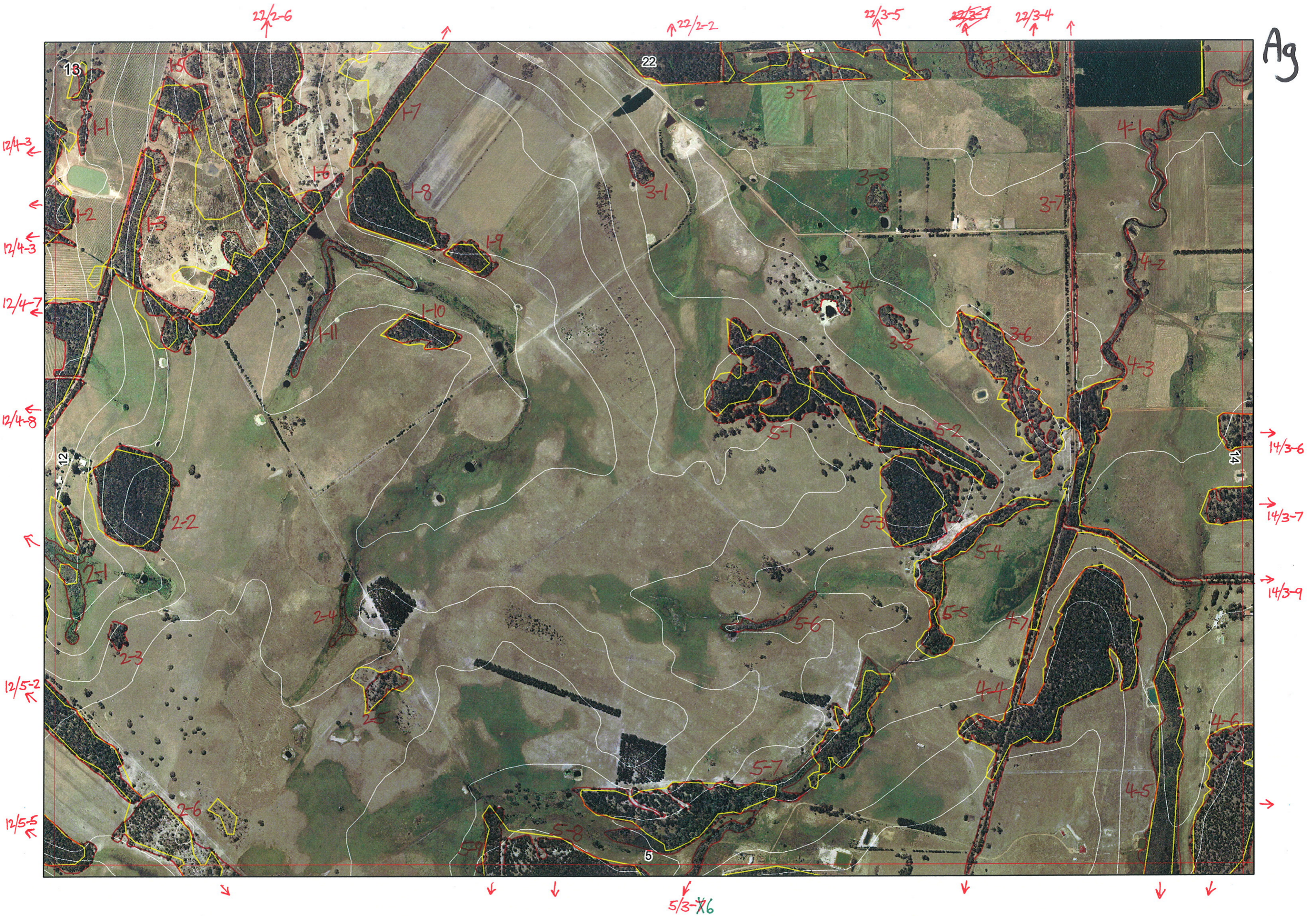


Ag





22/2-6

22/2-2

22/3-5

~~22/3-1~~

22/3-4

A9 14/8/06



2/4-3

2/4-3

2/4-3

2/4-7

2/4-8

2/4-8

12/5-2

12/5-5

14/3-6

14/3-7

14/3-9

5/3-7

Map Sheet Number 13

Pre Field Recorder(s) AW

Field Recorder(s) SHAW, EH, Jude Swan Bioplan Vegetation Mapping Data

R E M	RE M2	XM AP	LIN TYPE	L I N E A R	M L U	U N I T S	U P L A N D ?	W E T L A N D ?	V I S I T ?	DETAIL Area Name	VEG CON	Field date	OBS From	YNOTASS	D E T V I S R E Q D	COMMENTS	VEG STRU C/DENS	FCT	DOMINANTS		
																			1	2	3
X1	1	-	-	-	WS	1	Y	-	Y		5	5/7	dist			F		Eucal	Eucmar	Euchae?	
X1	2	Y	-	-	WS	1	Y	-	Y		4	5/7	dist			F		Eucal	Eucmar	Euchae?	
X1	3	-	-	-	WS	1	Y	-	Y		2	5/7	edge		Algae, Acamyst Kookaburra	F		Eucal	Eucmar	Euchae	
X1	4	-	-	-	WS	1	Y	-	Y		3	5/7	edge			F		Eucal	Eucmar	Euchae	
X1	5	-	-	-	WS	1	Y	-	Y		43	5/7	edge			F		Eucal	Eucmar	Euchae	
X1	6	-	-	-	WS	1	Y	-	Y		3	5/7	dist.			F		Eucal	Eucmar	Euchae	
X1	7	Y	fence	Y	WS	1	Y	-	Y		3	5/7	dist			F		Eucal	Eucmar	Euchae	
X1	8	-	-	-	WS	1	Y	-	Y		5	5/7	dist			F		Eucal	Eucmar	Euchae?	
X1	9	-	-	-	WS	1	Y	-	Y		5	5/7	dist			F		Eucal	Eucmar	Euchae?	
X1	10	-	-	-	WS	1	Y	-	Y		5	5/7	dist			F		Eucal	Eucmar	Euchae?	
X1	11	-	channel	Y	WS	1	-	Y	Y		4	5/7	dist		Cyater, Agostic Reger paning around.	HS		Eucal	Eucmar	Euchae?	
X2	1	Y	channel	Y	WS	2	Y	Y	Y		D	6/7	dist.			TS		Eucal	Euc marg		
X2	2	-	-	-	WS	1	Y	-	Y		D	6/7	dist			F		Eucal	Euc marg		
X2	3	-	-	-	WS	1	Y	-	N		D-CD	6/7	aerial	AW				Eucal	Euc marg		
X2	4	-	channel	Y	WS	1	-	Y	N		D-CD	6/7	aerial	AW			TS		Agolin?		
X2	5	-	-	-	WS	1	Y	-	N		D	6/7	aerial	AW			W		Euc marg?	Agoflex?	Bank sp?
X2	6	Y	-	-	WS	1	Y	-	N		D	6/7	aerial	AW		} looks to be sandy upland site	W		Euc marg?	Agoflex?	Bank sp?
X3	1	-	-	-	WS	1	Y	-	Y		5.3	5/7	dist			W		Eucal	Eucmar		

Summary/General Comments

57AW, EH. Jude
Carter

Swan Bioplan Vegetation Mapping Data

Map Sheet Number 13

Pre Field Recorder(s) AW

Field Recorder(s)

R E M	RE M2	XM AP	LIN TYPE	L I N E A R	M L U	U N I T S	U P L A N D ?	W E T L A N D ?	V I S I T ?	DETAIL/ Area Name	VEG CON	Field date	OBS From	YNOTASS	D E T V I S R E Q D	COMMENTS	VEG STRU CTURE DENS	FCT	DOMINANTS		
																			1	2	3
3	2	-	fence	Y	P	1	Y	-	Y		4	5/7	dist			Same as southern Eucal comm in Taylor's NR	F		Eucal	Eucmar	
3	3	-	-	-	P	1	Y	-			5.3	5/7	dist				F		Eucal	Eucmar	
3	4	-	-	-	P	1	Y	-	N		5.3	5/7	aerial	AW			F		Agofle		
3	5	-	-	-	P	1	Y	-	N		5.3	5/7	aerial	AW			F		Agofle		
3	6	-	-	-	P	1	Y	-	Y		5	5/7	edge				F		Agofle		
3	7	Y	road	Y	P	2	Y	-	Y		4	5/7	edge			Xyloc, Emmbush, bracken, Daphn, Cyat, Cyat, Aca	F		Eucmar	Eucal	Melin Agolin SH (2)
4	1	Y	channel	Y	P	1	-	Y			4.7	5/7	dist			Eucal fringe	SH		Agolin		
4	2	-	channel	Y	P	1	-	Y			4.7	5/7	dist			Eucal fringe	SH		Agolin		
4	3	-	channel road	Y	P	3	Y	Y	Y		4	5/7	edge				W		Eucpat	Agolin	Agofle
																Acasem, Loxmag	F		Eucal	Eucmar	Allfra
																	SH	106	Hakold	Kunoc	
4	4	Y	road	B	WS	1	Y	Y	Y		5	5/7	dist.				F		Eucal	Eucmar	Allfra
4	5	Y	channel	Y	WS	1	-	Y	Y		3	5/7	aerial/ dist	AW	Y	Eucreg, Eucpat	SH		Agolin		
4	6	Y	-	-	WS	1	Y	-	N		5	5/7	aerial	AW	N		F		Eucal	Eucmar	
5	1	-	-	-	WS	1	Y	-	N		4.7	5/7	aerial	AW			F		Eucal	Eucmar	
5	2	-	-	-	WS	1	Y	-	Y		5	5/7	dist				F		Eucal	Eucmar	

Summary/General Comments

3

5/7 AW, EH, ^{Jude} ~~Carley~~

Map Sheet Number 13

Pre Field Recorder(s) AEW

Field Recorder(s) _____

Swan Bioplan Vegetation Mapping Data

R E M	RE M2	XM AP	LIN TYPE	L I N E A R	M L U	U N I T S	U P L A N D ?	W E T L A N D ?	V I S I T ?	DETAIL/ Area Name	VEG CON	Field date	OBS From	YNOTASS	D E T Y I S R E Q D	COMMENTS	VEG STRUC/ DENS	FCT	DOMINANTS		
																			1	2	3
X53	-	-	-	-	ws	1	Y	-	N		4	5/7	aerial	AW		F		Euccal	Eucmar		
X54	-		channel	Y	ws	1	-	Y	Y		4	5/7	dist			W		Agofle	Agolin		
X55	-		channel	Y	ws	1	-	Y	Y		4.3	5/7	dist			W		Agolin	Agofle		
X56	-		channel	Y	ws	1	-	Y	Y		5.3	5/7	dist			SH		Agolin			
X57	-		channel	Y	ws	3	Y	Y	Y		4	5/7	dist			F		Euccal	Eucmar		
																W		Agofle?			
																SH		Euccal fringe	Agolin		
X47	N		road	Y		1	Y	N	Y		3	5/7	trans			F		AW sp list. Small wet area	Eucmar	Euccal	

Summary/General Comments