

Ag



13/4-1

23/3-6

6/1-4

6/3-1

6/3-2

6/3-3

15/1-2

15/1-4

13/4-6

Ag 14/8/06



← 13/4-1

14

23/3-5 ↑

23

^

^

^

→ 15/1-2

15

→ 15/1-4

← 3/4-6

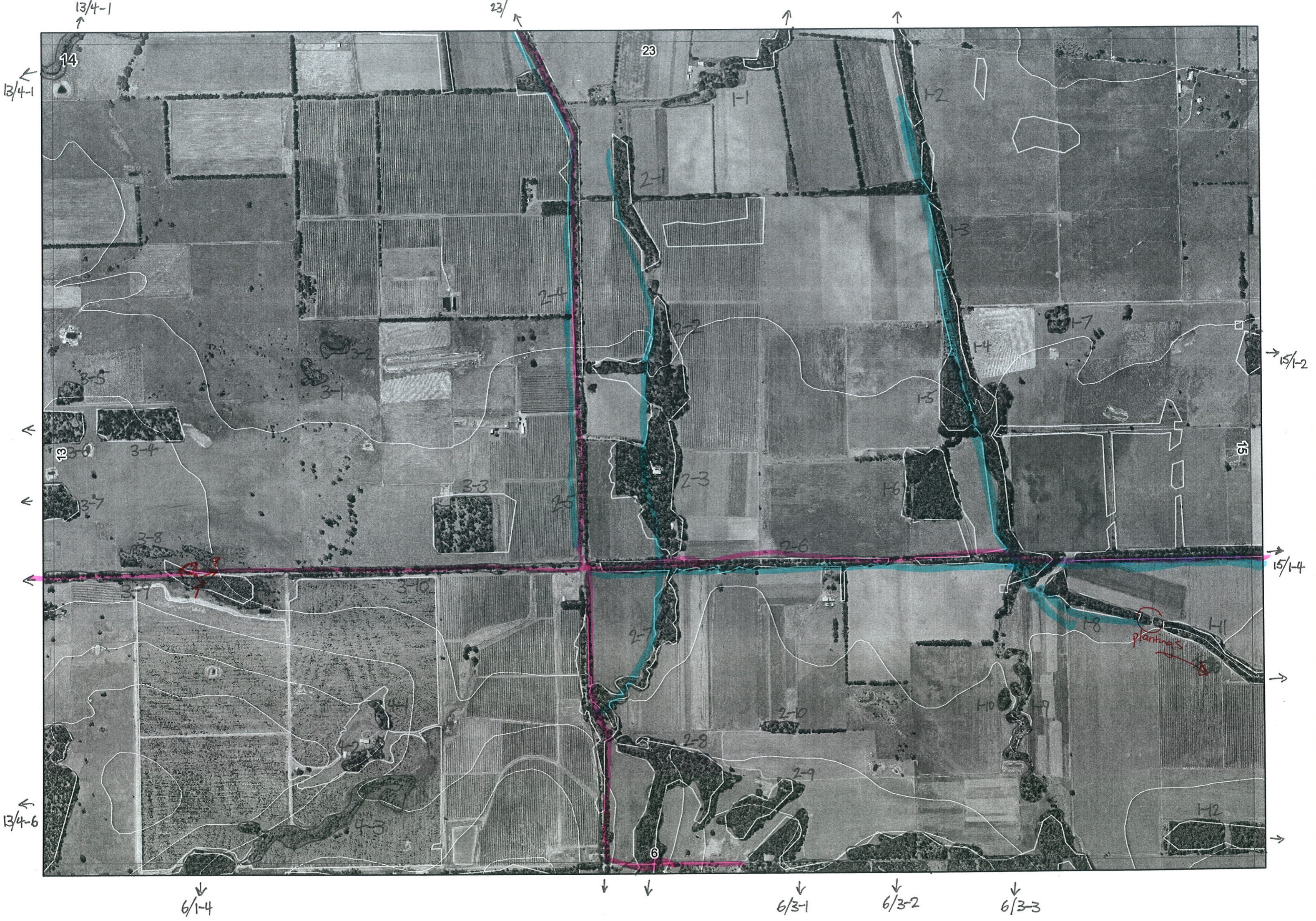
6

↓ 6/1-4

↓ 6/3-1

↓ 6/3-2

↓ 6/3-3



Map Sheet Number 14

Pre Field Recorder(s) ACW

Field Recorder(s) _____

R E M	RE M2	XM AP	LIN TYPE	L I N E A R	M L U	U N I T S	U P L A N D ?	W E T L A N D ?	V I S I T ?	DETAIL/ Area Name	VEG CON	Field date 2006	OBS From	YNOTASS	D E T V I S R E Q D	COMMENTS	VEG STRU C/ DENS	FCT	DOMINANTS		
																			1	2	3
X1	1	Y	channel	Y	P	1	-	Y	N		5	5/7	aerial	AW	N		W		Eucmar	Euccal	
X1	2	Y	channel	Y	P	1	Y	-	N		5	5/7	aerial	AW	N		F		Euccal	Agolin	
X1	3	-	channel	Y	P	1	Y	-	N		5	5/7	aerial	AW	N		F		Euccal	Agolin	
X1	4	-	road/ channel	Y	P	2	Y	-	Y		5	5/7	edge		N	Dashoo, Leuver, Howell, Gretri SE corner road/creek junction a-va. Same as 1-6	F	1b	Euccal ^①	Eucmar ^①	Euccal ^② F Agolin
X1	5	-	-	-	P	1	Y	-	N		5	5/7	aerial	AW	N		F		Euccal	Eucmar	
X1	6	-	-	-	P	1	Y	-	Y		5	5/7	edge		N	Kingra	F		Euccal	Eucmar	
X1	7	-	-	-	P	1	Y	-	Y		5	5/7	dist		N		W		Euccal	Eucmar	
X1	8	-	channel	Y	P	1	Y	-	Y		5	5/7	dist		N	MAX addition done 24/3/06	F		Euccal	Eucmar	
X1	9	-	channel	Y	P	1	-	Y	N		5	5/7	aerial	AW	N		W		Euccal	Agolin	
X1	10	-	-	-	P	1	Y	-	N		5	5/7	aerial	AW	N		F		Euccal		
T1	11	Y	channel	Y	P	1	Y	-	Y		5	5/7	dist		N	plantings,			Euccal		
X1	12	Y	-	-	WS	1	Y	-	Y		5	5/7	dist		N		F		Euccal	Eucmar	
X2	1	Y	channel	Y	P	1	Y	Y	Y		5	5/7	dist		N	Poss. understorey in vines	F		Euccal	Eucmar	
X2	2	-	channel	Y	P	1	Y	-	Y		4.3	5/7	dist		N		F		Euccal	Eucmar	
X2	3	-	channel	Y	P	1	Y	-	Y		2.3	5/7	dist		Y	grebragra	F		Euccal		
X2	4	-	road	Y	P	1	Y	-	Y		4.3	5/7	edge		N	Hakamp, Xangra, Dashoo, Hakrus, grebragra	W		Euccal	Eucmar	
X2	5	-	road	Y	P	1	Y	-	Y		4.3	5/7	edge		N	Emubush, Dashoo, Perell	F		Euccal	Eucmar	Allfra
X2	6	-	road	Y	P	1	Y	-	Y		4.7	5/7	edge		N	Allfra, Emubush, Perell, Bosorn	F		Euccal	Eucmar	

Summary/General Comments

5/7 AM, E.H. J. de Lutter

Map Sheet Number 14

Pre Field Recorder(s) PLW

Field Recorder(s)

Swan Bioplan Vegetation Mapping Data

R E M	RE M2	XM AP	LIN TYPE	L I N E A R	M L U	U N I T S	U P L A N D ?	W E T L A N D ?	V I S I T ?	DETAIL/ Area Name	VEG CON	Field date	OBS From	YNOTASS	D E T V I S R E Q D	COMMENTS	VEG STRU CTURE DENS	FCT	DOMINANTS		
																			1	2	3
X2	7	Y	channel/road	Y	WS	2	Y	Y	Y		4.7	5/7	dist		N	Silver wattle	F		Eucal	Allfra	Eucmar
X2	8	Y	channel	B	WS	2	Y	Y	Y		4.7	5/7	dist		N	Heavily grazed Triflo	TS		Agolin	Eucal	
X2	9	-	-	-	WS	1	Y	-	Y		5	5/7	dist		N	same as 2-8 upland.	F		Eucal	Eucmar	
X2	10	-	-	-	P	1	Y	-	Y		5.7	5/7	dist		N		W		Eucal	Eucmar	
X3	1	-	-	-	P	1	-	Y	Y		9	5/7	dist				SC		Melpre	Astfas	Melinc
X3	2	-	-	-	P	1	-	Y	Y		9	5/7	dist				HS		Melpre	Astfas	Melinc
X3	3	-	-	-	P	1	Y	-	Y		5	5/7	dist				W		Eucal	Eucmar	Allfra
X3	4	-	-	-	P	1	Y	-	Y		5	5/7	dist				F		Eucal	Eucmar	
X3	5	-	-	-	P	1	Y	-	Y		5	5/7	dist				W		Eucal	Eucmar	
X3	6	Y	-	-	P	1	Y	-	Y		5	5/7	dist				W		Eucal	Eucmar	
X3	7	Y	-	-	P	1	Y	-	Y		5	5/7	dist				F		Eucal	Eucmar	
X3	8	-	-	-	P	1	-	Y	Y		D	5/7	dist				SH		Melpre	Astfas	Hakold
X3	9	Y	road	Y	P	2	Y	Y	Y	Land for Wildlife Fe. property	4.6	5/7	edge		Y	Eucpat + fringe of Eucal Cal sp. whicher, Melinc, Hakold Eucpat, Lephaea, Kunzea Cyper, Besspa tape of frogs	F		Eucal	Eucmar	
X3	10	-	road	Y	P	1	Y	-	Y		5	5/7	edge			Victree, Perell, Euchae	F		Eucmar	Eucal	

Summary/General Comments

3

Map Sheet Number 14

Pre Field Recorder(s) AW

Field Recorder(s) 5/7 AW, Eff Carter, Jude Swan Bioplan Vegetation Mapping Data

R E M	RE M2	XM AP	LIN TYPE	L I N E A R	M L U	U N I T S	U P L A N D ?	W E T L A N D ?	V I S I T ?	DETAIL/ Area Name	VEG CON	Field date	OBS From	YNOTASS	D E T V I S R E Q D	COMMENTS	VEG STRU C/ DENS	FCT	DOMINANTS		
																			1	2	3
X4	1	-	-	-	WS	1	Y	-	N		5	5/7	aerial	NW	N		F		Eucal	Eucmar	
X4	2	-	-	-	WS	1	Y	-	N		5	5/7	aerial	AW	N		F		Eucal	Eucmar	
X4	3	-	channel	y	WS	1	Y	Y	N		4	5/7	aerial	AW	Y	Scattered trees around edge.	HS		Agolin?		

Summary/General Comments