

Ag



↑

24/4-4  
↑

15

24

14

16

↖

→ 16/6-4

→

14/1-11  
↖

14/1-12  
←

↓ 7/1-2 ↓ 7/1-3

↓ 7/1-16

↓ 7/1-9

↓ 7/3-5

↓ 7/3-1

↓ 7/3-2

↓ 7/3-3

↓ 7/3-4

↓ 7/4-1

↓ 7/4-2

↓ 7/4-3

7

H

1-5

1-2

1-3

1-4

1-6

1-7

1-8

5-1

5-2

5-3

5-4

5-5

5-6

5-7

5-8

5-9

5-10

5-11

5-12

5-8

5-9

4-2

4-3

4-4

4-6

4-5

4-7

4-9

4-8

4-10

4-1

2-1  
2-2  
2-3

2-4

2-5

2-7

3-1

3-2

→ 16/6-4

→

14/1-11  
↖

14/1-12  
←

↓ 7/1-2 ↓ 7/1-3

↓ 7/1-16

↓ 7/1-9

↓ 7/3-5

↓ 7/3-1

↓ 7/3-2

↓ 7/3-3

↓ 7/3-4

↓ 7/4-1

↓ 7/4-2

↓ 7/4-3

7

H

1-5

1-2

1-3

1-4

1-6

1-7

1-8

5-1

5-2

5-3

5-4

5-5

5-6

5-7

5-8

5-9

5-10

5-11

5-12

5-8

5-9

4-2

4-3

4-4

4-6

4-5

4-7

4-9

4-8

4-10

4-1

2-1  
2-2  
2-3

2-4

2-5

2-7

3-1

3-2

→ 16/6-4

→

14/1-11  
↖

14/1-12  
←

↓ 7/1-2 ↓ 7/1-3

↓ 7/1-16

↓ 7/1-9

↓ 7/3-5

↓ 7/3-1

↓ 7/3-2

↓ 7/3-3

↓ 7/3-4

↓ 7/4-1

↓ 7/4-2

↓ 7/4-3

7

Ag 14/8/06

24/4-4



15

24

14

16

7/1-2 7/1-3

7/1-16

7/1-9

7/3-5

7/3-1

7/3-2

7/3-3

7/3-4

7/4-1

7/4-2

7/4-3

14/1-11

14/1-12

16/6-4

→

↑

↑

↑

→

→

←

↓

↓

↓

↓

↓

↓

↓

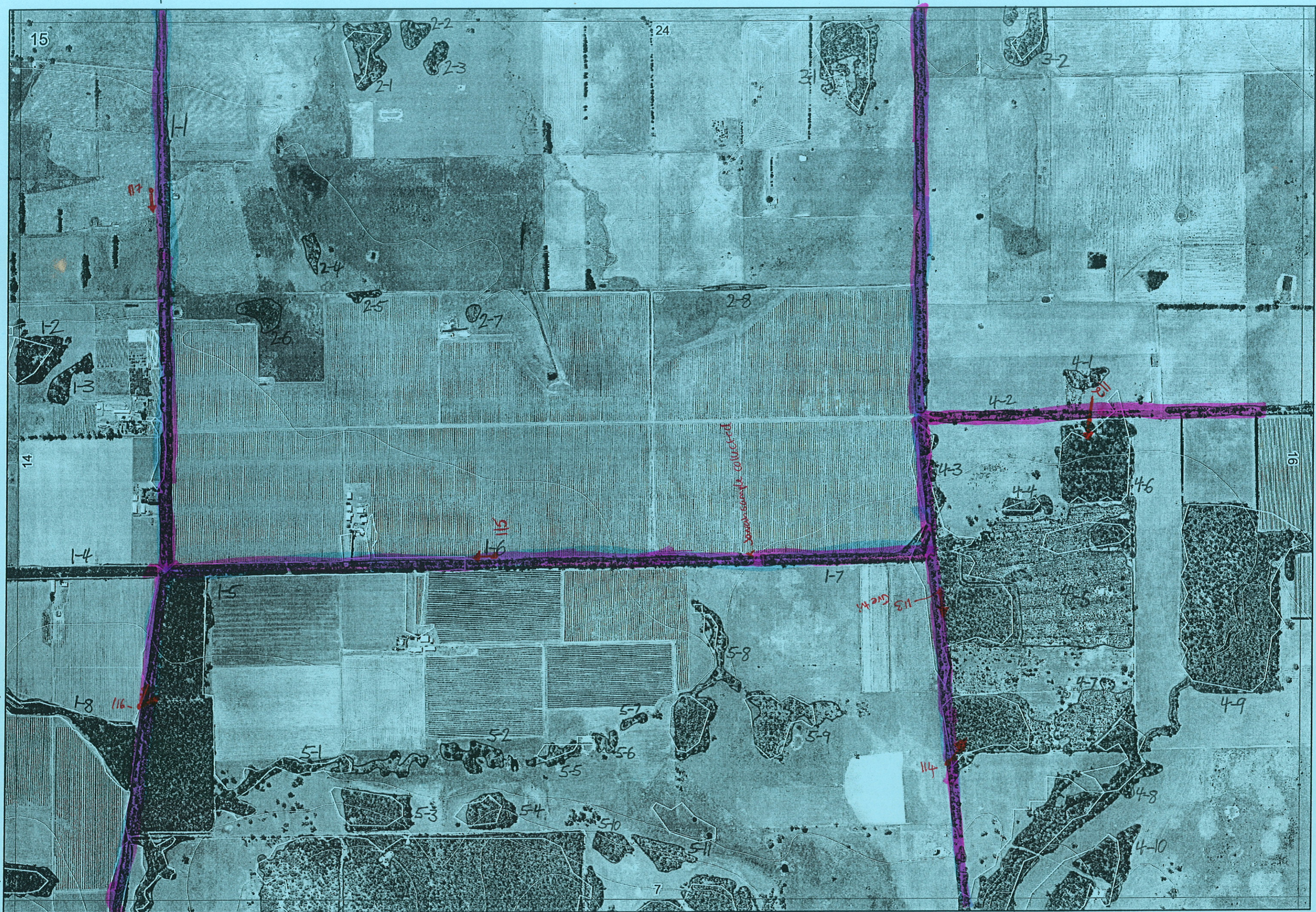
↓

↓

↓

↓

↓



1

Map Sheet Number 15

Pre Field Recorder(s) AW

Field Recorder(s)

Swan Bioplan Vegetation Mapping Data

R E M	RE M2	XM AP	LIN TYPE	L I N E A R	M L U	U N I T S	U P L A N D ?	W E T L A N D ?	V I S I T ?	DETAIL/ Area Name	VEG CON	Field date 200_	OBS From	YNOTASS	D E T Y I S R E Q D	COMMENTS	VEG STRU C/DENS	FCT	DOMINANTS		
																			1	2	3
X	1	1	Y	road	Y	P	3	Y	Y	Boallia rd	G-VG	1/5				Croc brachystylis sp. grandis Dashob Heliporus cyria	TS HS	9-?	Agolin Aster non fasciculatus	Euccal Petsqp	Melpre Hakmar
											D	1/5					F		Euccal	Eucmar	
X	1	2	Y	-	-	P	1	Y	-		CD-D	1/5	dis		N		F		Euccal		
X	1	3	-	-	-	P	1	Y	-		CD-D	1/5	dis		N		F		Euccal		
X	1	4	Y	road	Y	P	1	Y	-		D	1/5	edge			Alofra	F		Euccal	Eucmar	
X	1	5	-	road	B	P	1	Y	-		E	1/5	edge		Y	Mirdil Dasy Leo Petohir kangra Isosph	F	1a	Eucmar	Euccal	
X	1	6	-	road	Y	P	1	Y	-		D	1/5	edge			Alofra	F		Euccal		
X	1	7	-	road	Y	P	1	Y	-		D	1/5	edge			Alofra	F		Euccal	Eucmar	
X	1	8	Y	channel	Y	P	1	Y			V-E	1/5	edge			Bosom hakamp	F		Euccal	Eucmar	
X	2	1	-	-	-	P	1	Y	-		CD-D	1/5	dist				F		Euccal		
X	2	2	-	-	-	P	1	Y	-		CD-D		aerial				F		Euccal		
X	2	3	-	-	-	P	1	Y	-		CD-D		aerial				F		Euccal		
X	2	4	-	-	-	P	1	-	Y		CD-D	1/5	dist				W		Euccal		
X	2	5	-	-	-	P	1	Y	-		CD-D	1/5	edge				W		Euccal		
X	2	6	-	-	-	P	1	-	Y		CD-D	1/5	dist				SC		Euccal	Agolin	
X	2	7	-	-	-	P	1	-	Y		CD-D		aerial				SC		Euccal	Agolin	
	2	8	-	road	Y	P	1	-	Y							plantings	<del>SH</del>				
X	3	1	-	-	-	P	1	Y	-		CD-D	1/5	dist		N		W		Euccal	Jerrah	Allfro

MAX addition done 24/5/00

Summary/General Comments

2

Map Sheet Number 15

Pre Field Recorder(s) AW

Field Recorder(s)

Swan Bioplan Vegetation Mapping Data

R E M	RE M2	XM AP	LIN TYPE	L I N E A R	M L U	U N I T S	U P L A N D ?	W E T L A N D ?	V I S I T ?	DETAIL/ Area Name	VEG CON	Field date 200_	OBS From	YNOTASS	D E T V I S R E Q D	COMMENTS	VEG STRU C/DENS	FCT	DOMINANTS		
																			1	2	3
X3	2	Y	-	-	P	1	Y	-			CO-D	1/5	dist		N	Alfalfa	W		Euccal		
✓4	1	-	-	-	P	1	Y	-			CO-D	1/5	dist		N	Mostly planting	W		Euccal	Eucmar	
X4	2	-	road	Y	P	1	Y	-			D-G	1/5	edge		N	Emubush Dasyhad Alopec Eucal	F	1a-?	Euccal	Eucmar	
X4	3	-	road	B	P	1	Y	-			G-1/5	1/5	edge		Y	Alfalfa Emubush Dasyhad Fergana GFruit. Mistle FCTla Grete	F	1a-?	Euccal	Eucmar	
																			<del>Eucmar</del>		
✓4	4	-	-	-	P	1	Y	-			D-G	1/5	dist		N		F		Euccal		
X4	5	-	-	-	P	1	Y	-			G		aerial			recess of 4-3	F		Eucmar		
X4	6	-	-	-	P	1	Y	-			G	1/5	edge		N	recess v. recently Eucal	F	1a-?	Eucmar	Euccal	Alfalfa
X4	7	-	-	-	P	1	Y	-			G		aerial			recess of 4-3	F		Eucmar		
X4	8	-	channel	B	P	1	Y	Y			CO-D	1/5	dist		N		F		Euccal		
X4	9	Y	channel	B	P	3	Y	Y			G-1/5	1/5	dist		Y	recess Eucal	F		Euccal	Eucmar	Alfalfa
X4	10	-	-	-	P	1	Y	-			CO-D		aerial		N		F		Euccal		
✓5	1	-	channel	Y	P	1	Y	-			CO-D		dist		N		W		Euccal		
X5	2	-	channel	Y	P	1	Y	-			CO-D		aerial		N		W		Euccal		
X5	3	-	-	-	WS	1	Y	-			D		aerial			maybe Eucal	F		Euccal	Eucmar	

Summary/General Comments

