

Ag

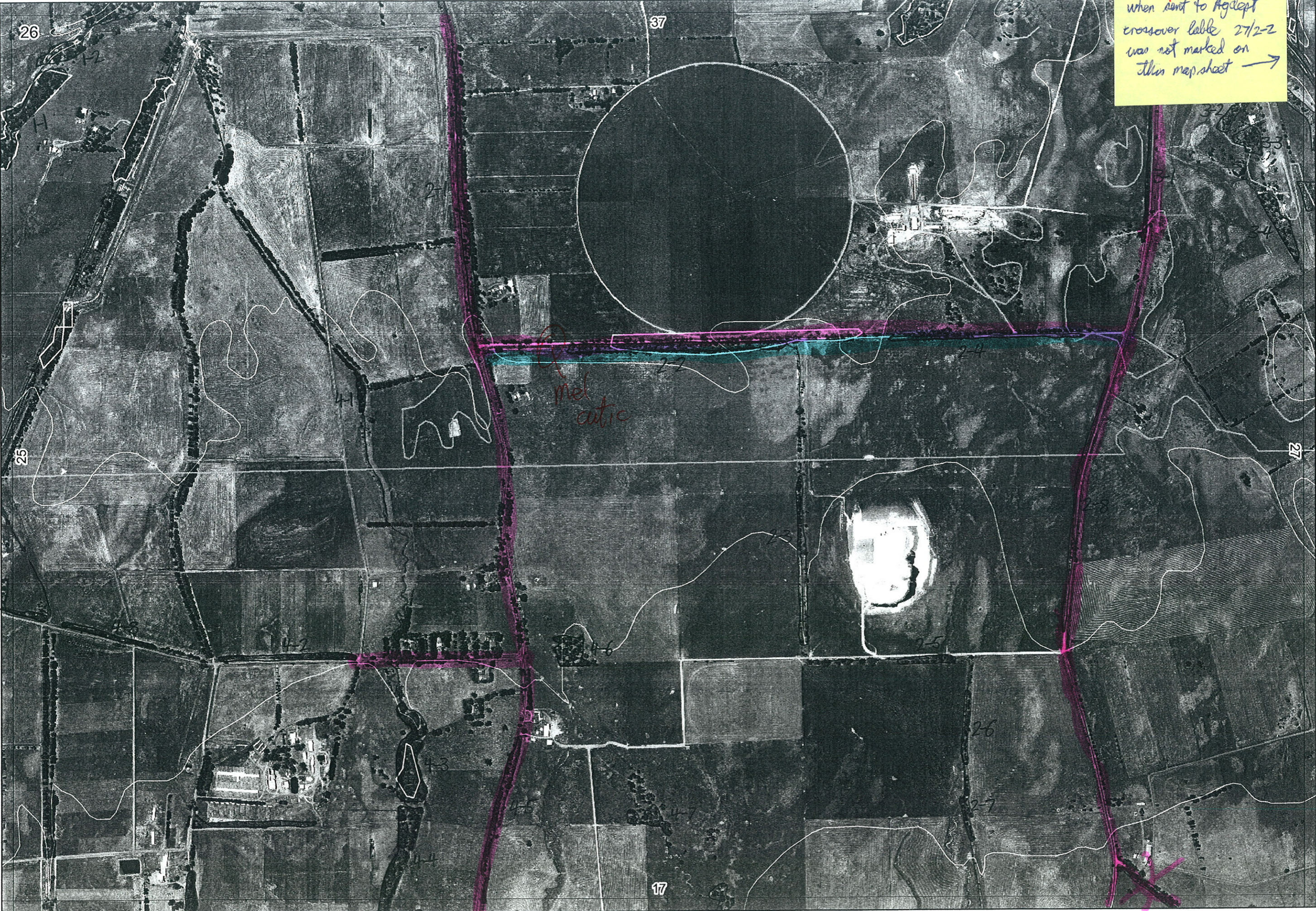


37/61

37/3-1

Map Sheet 26
when sent to Agdept
crossover label 27/2-2
was not marked on
this map sheet →

1/-2



mel
cutic

27/2-2

27/2-1

27/2-1

←

15/7-3
←

17/

17/

17/

1

Map Sheet Number 26

Pre Field Recorder(s) AW

Field Recorder(s)

Swan Bioplan Vegetation Mapping Data

Mailed 24/19

R E M	RE M2	XM AP	LIN TYPE	L I N E A R	M L U	U N I T S	U P L A N D ?	W E T L A N D ?	V I S I T ?	DETAIL/ Area Name	VEG CON	Field date 200_	OBS From	YNOTASS	D E T V I S R E Q D	COMMENTS	VEG STRUC/ DENS	FCT	DOMINANTS		
																			1	2	3
X1	1	Y	channel	Y	P	1	-	Y			CD	26.5	D				F		Eucal	MEL PRE	
X1	2	-	channel	Y	P	1	-	Y			CD	26.5	D				W		Eucal	MEL PRE	
X2	1	-	road	Y	P	1	Y	-			D	26.5	trans			PLANTINGS MOSBY JN. STORY	W		Eucal		
X2	2	-	road	Y	P	1	Y	-			G. D	26.5	trans			CYA. EQU PERS. KAIP. JARRAH BANKIA KITT. ENIO BUSH	F		Eucal	JARRAH	
2	3	-	road	Y	P	1	Y	-								PLANTINGS	W		Eucal		
X2	4	-	road	Y	P	2	Y	-			D G	26.5	trans			LEP. LONG. PERS. KAIP.	W		Eucal	MEL PR MARRI	
X2	5	-	road	Y	P	1	-	Y			D. G	26.5	D				F		Eucal	MARRI	
2	6	-	road	Y	P	1	Y	-								plantings	F		Eucal		
2	7	-	road	Y	P	1	Y	-								plantings	F		Eucal		
3	1	-	road	Y	P	1	Y	-								planting	F		Eucal		
X3	2	-	-	-	P	1	Y	-			G	9/5	dist			fenced.	W	21b	B. alboculta	B. #1 ilicifolia	Jarrah
X3	3	-	-	-	P	1	Y	-			11	11	acreal			see 3-2	W	21b	Banatt	Banili	Eucmar
X3	4	-	-	-	P	1	Y	-			CD	9/5	dist				W	Na	Marrri	X pres.	
4	1	-	channel	Y	P	1	-	Y								PLANTINGS					
4	2	-	road	Y	P	1	Y	-								PLANTINGS	F		Eucal		
4	3	-	channel	Y	P	1	-	Y								PLANTINGS	F		Eucal		
4	4	Y	channel	Y	P	1	-	Y								Plantings	F		Eucal		
X4	5	-	road	Y	P	1	Y	-			D	26.5	trans			DASY HOOK SOME PLANTINGS	F		Eucal		

Summary/General Comments

2

Map Sheet Number 26

Pre Field Recorder(s) AW

Field Recorder(s)

Swan Bioplan Vegetation Mapping Data

R E M	RE M2	XM AP	LIN TYPE	L I N E A R	M L U	U N I T S	U P L A N D ?	W E T L A N D ?	V I S I T ?	DETAIL/ Area Name	VEG CON	Field date 200_	OBS From	YNOTASS	D E T V I S R E Q D	COMMENTS	VEG STRUC/ DENS	FCT	DOMINANTS		
																			1	2	3
X4	6	-	-	-	P	1	Y	-			C-D	26.5	E				F		Euccal		
X4	7	-	-	-	P	1	-	Y			C-D	26.5	Ø				F		MARRI		
4	8	-	road	Y	P	1	Y	-		plantings							F		Euccal		
X4	9	-	ROAD	Y	P	1	Y	-			D	26.5	FRAS				F		MARRI		
X2	8	-	road	Y	P	2	Y	Y	Y		G-D	9/5	edge	N	Daisy heckerii, Ast non-fascic Lep long	HS W	10a 11a	Melpre Euccal	Melunc Euccal	Regcil Melpre	
X5	1	-	ROAD	Y	P	2	Y	Y			D-G	26.5	FRAS		ALL FRAS.	F		MARRI			
											D-G	26.5			ALL HUM. RINGED BANKSW. AIT.	W		MEL PRI			

Summary/General Comments