

Ag



33

46

32

34

22

1-1

1-2

1-3

1-4

1-9

1-8

1-5

1-10

1-12

1-11

1-13

2-1

2-2

2-3

2-4

2-5

3-1

3-2

3-3

3-4

3-5

3-6

4-2

4-5

4-3

4-4

6-1

4-6

4-7

5-2

5-3

5-1

46/2-1

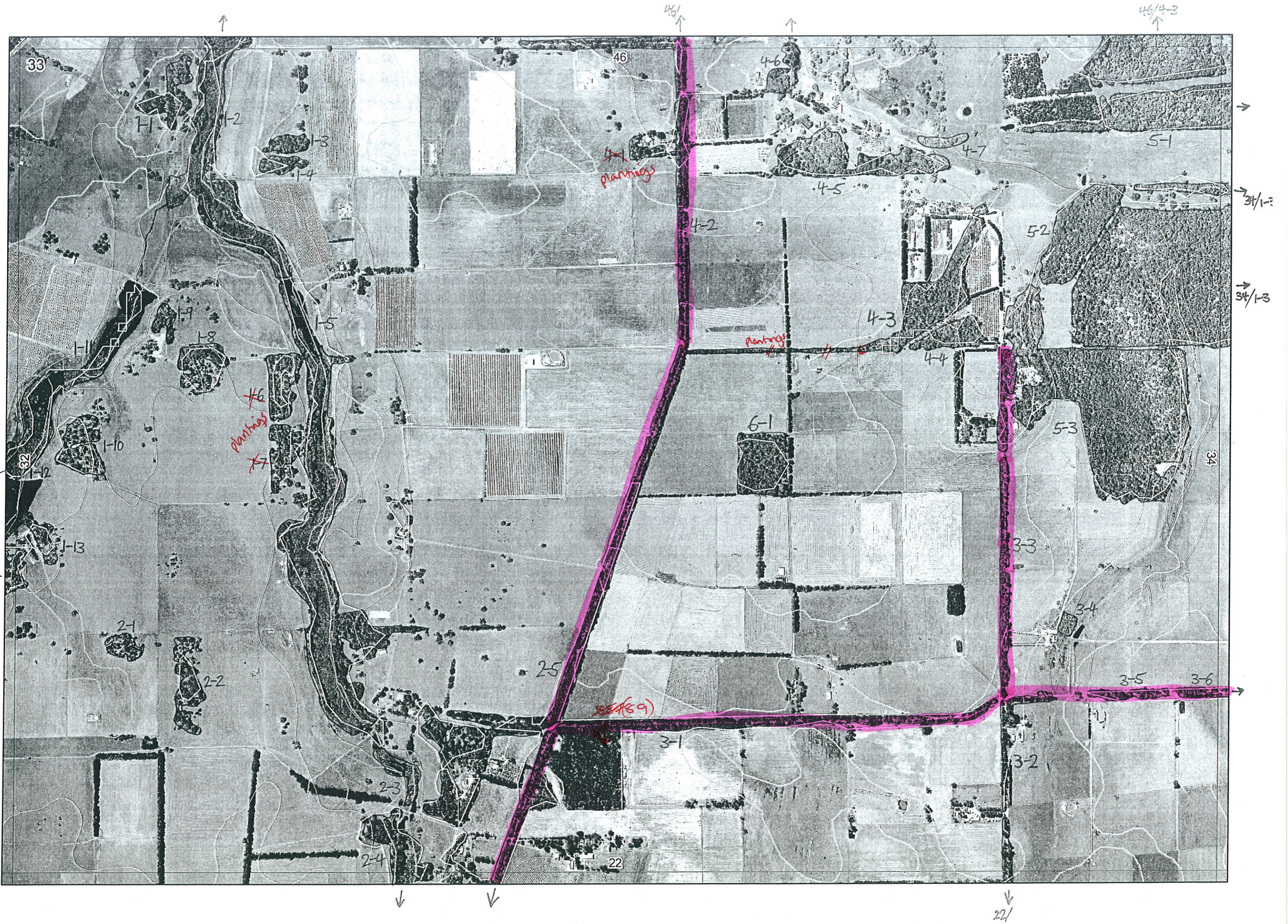
46/4-3

32/5-7

34/1-3

34/1-3

22/4-6



2

Map Sheet Number 33

Pre Field Recorder(s) AW

Field Recorder(s) _____

Swan Bioplan Vegetation Mapping Data

R E M	RE M2	XM AP	LIN TYPE	L I N E A R	M L U	U N I T S	U P L A N D ?	W E T L A N D ?	V I S I T ?	DETAIL/ Area Name	VEG CON	Field date 2006	OBS From	YNOTASS	D E T V I S R E Q D	COMMENTS	VEG STRUC/ DENS	FCT	DOMINANTS		
																			1	2	3
X24	Y	channel	Y	P	2	-	Y				G	24	Aerial		N		F		Euc cal		
											G	24	Aerial		N		Sh		Ag linear.		
X25	-	road	B	P	1	Y	-				G-D	24/5	E		N	Book leaf	F		Euc cal	Euc mar	
-31	-	road	B	P	1	Y	-				E	24/5	E		Y!	See notebook	F		Euc cal	Euc mar	
X33	-	road	Y	P	3	Y	Y				D	24/5	E		N		F		Euc cal	Euc mar	
X32	-	road	Y	P	1	Y	-				D	24/5	E		N		F		Agofle	Euc mar	Euc cal
X34	-	-	-	P	1	-	Y				D	24/5	dit				F		Agofle		
X35	-	road	Y	P	1	Y	-				D	24/5	E				F		Euc cal	Euc mar	
X36	Y	road	Y	P	1	Y	-				D	24/5	E		N	Hakea vasa tolia	F		Euc cal	Euc mar	
41	-	-	-	P	1	Y	-			plantings							F		Euc cal		
X42	-	road	Y	P	1	Y	-				G-D	24/5	E		N	Hakea angusticantis	F		Euc cal		
H43	-	-	-	P	1	Y	Y				D-G		airial	HW		no access - gap area	F		Euc cal	Agofle	
X44	-	-	-	P	1	Y	-				D-G		airial	HW		no access - gap area	F		Euc cal	Agofle	
X45	-	-	-	P	2	Y	-				D?	24/5	dit		N		F		Agofle	Euc cal	
X46	Y	-	-	P	1	Y	-				D	24/5	E		N		F		Agofle		
47	-	-	-	P	1	-	Y				D		airial	HW		no access - gap area	W		Melba		
X51	Y	-	-	P	1	Y	-				D		airial	HW		no access - gap area	F		Melba	Euc cal	Euc cal

see notebook for more comments

Summary/General Comments

R E M	RE M2	XM AP	LIN TYPE	L I N E A R	M L U	U N I T S	U P L A N D ?	W E T L A N D ?	V I S I T ?	DETAIL/ Area Name	VEG CON	Field date	OBS From	YNOTASS	D E T V I S R E Q D	COMMENTS	VEG STRU C/ DENS	FCT	DOMINANTS		
																			1	2	3
X11	1	-	-	-	P	1	Y	-		D-00	21/6	distance			N	Some peppy on edge	F		Eucal		
X12	2	Y	channel	Y	P	1	-	Y		VG	21/6	distance			N		Sh		Eucal	Agolin	
X13	-	-	-	-	P	1	Y	-		D-00	21/6	distance			N		F		Eucal		
X14	-	-	-	-	P	1	Y	-		D-00	21/6	distance			N		F		Eucal		
X15	-	-	channel	Y	P	2	Y	Y		G-10	24	airial					F		Eucal		
																	SC		Agolin		
16					P	1	Y	-									F		Eucal		
17					P	1	Y	-									F		Eucal		
X18	-	-	-	-	P	1	Y	-		D-00	24/5	airial			N		F		Eucal		
X19	-	-	-	-	P	1	Y	-		D-00	24/5	airial			N		F		Eucal		
X110	-	-	-	-	P	1	Y	-		D-00	24/5	airial					F		Eucal		
X111	-	-	channel	Y	P	1	-	Y		D		airial	AW				SH		Agolin		
X112	Y	-	channel	Y	P	1	-	Y		D		airial	AW				SH		Agolin		
X113	-	-	-	-	P	1	Y	-		D-00	24/5	airial			N		F		Eucal		
X21	-	-	-	-	P	1	Y	-		D-00	24/5	airial			N		F		Eucal		
X22	-	-	-	-	P	1	Y	-		D-00	24/5	airial			N		F		Eucal		
X23	-	-	channel	Y	P	2	-	Y		G	24	airial			N		F		Eucal		
										G	24	airial			N		SC		Agolin		

3

Map Sheet Number 33

Pre Field Recorder(s) AW

Field Recorder(s) _____

Swan Bioplan Vegetation Mapping Data

R E M	RE M2	XM AP	LIN TYPE	L I N E A R	M L U	U N I T S	U P L A N D ?	W E T L A N D ?	V I S I T ?	DETAIL/ Area Name	VEG CON	Field date	OBS From	YNOTASS	D E T V I S R E Q D	COMMENTS	VEG STRUC/ DENS	FCT	DOMINANTS		
																			1	2	3
X5	2	-	-	-	P	1	Y	-			D-G	2002	airial	AW	-	no access - gap area	F		Eucal	Agolle	
X5	3	-	-	-	P	3	Y	Y			G-D	2005	dist		Y		F		Eucal	Eucmar	
																	F		Agolle	Melba	
																	F		Agolle	Eucal	
X6	1	-	-	-	P	1	Y	-			D-G	2005	dist			Kingia	F		Eucal	Eucmar	
X3	3	(continued)			P						G-D	2005	E				F		Agolle	Eucal	
																V. small comm →	SH		Agolin	Melinc	Acadiv

Summary/General Comments

22