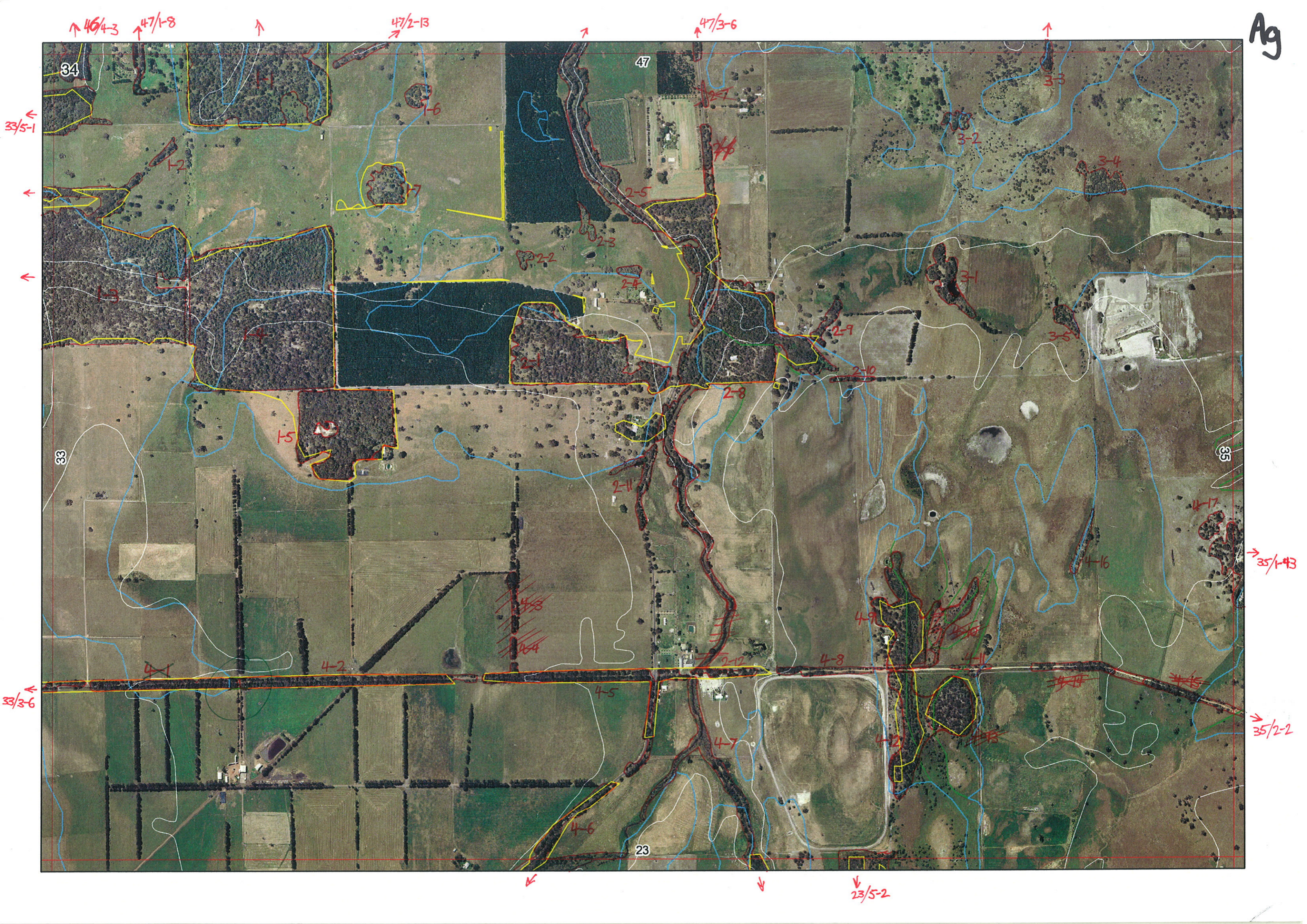


Ag



↑ 46/4-3 ↑ 47/1-8

↑ 47/2-13

↑ 47/3-6

← 33/5-1

←

←

33

35

→ 35/1-4B

← 33/3-6

→ 35/2-2

47

34

23

↓ 23/5-2

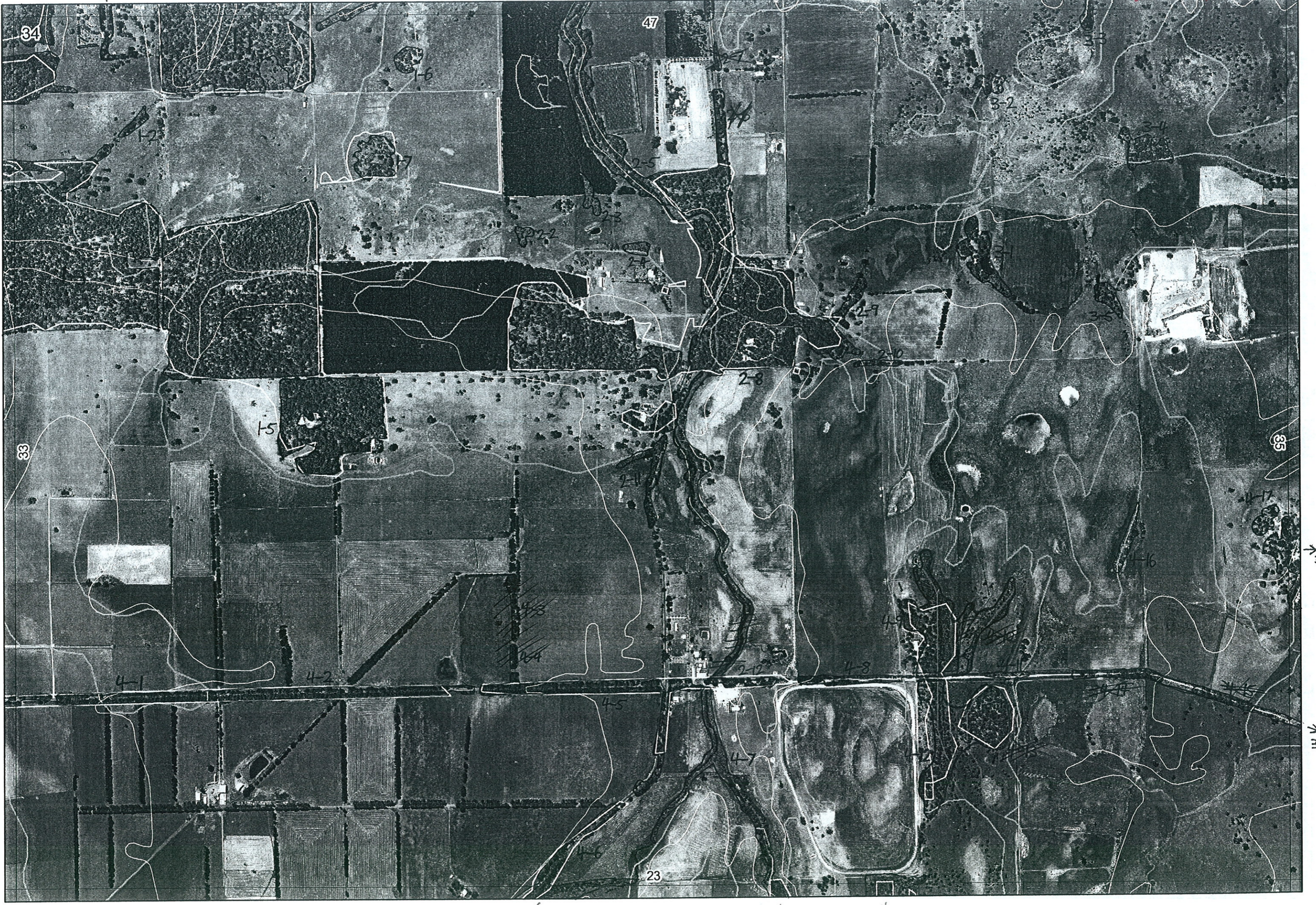
Ag 26/6/06

↑ 46/4-3 ↑ 47/1-8

↑ 47/2-13

↑ 47/3-6

↑



← 33/5-1

←

←

33

35

→ 35/1-4E

← 33/3-6

→ 35/2-2

←

↓

↓ 23/5-2

34

47

3-2

1-2

1-6

2-5

2-2

2-3

2-4

2-7

3-4

1-5

2-8

2-9

2-10

2-11

4-6

4-1

4-2

4-3

4-4

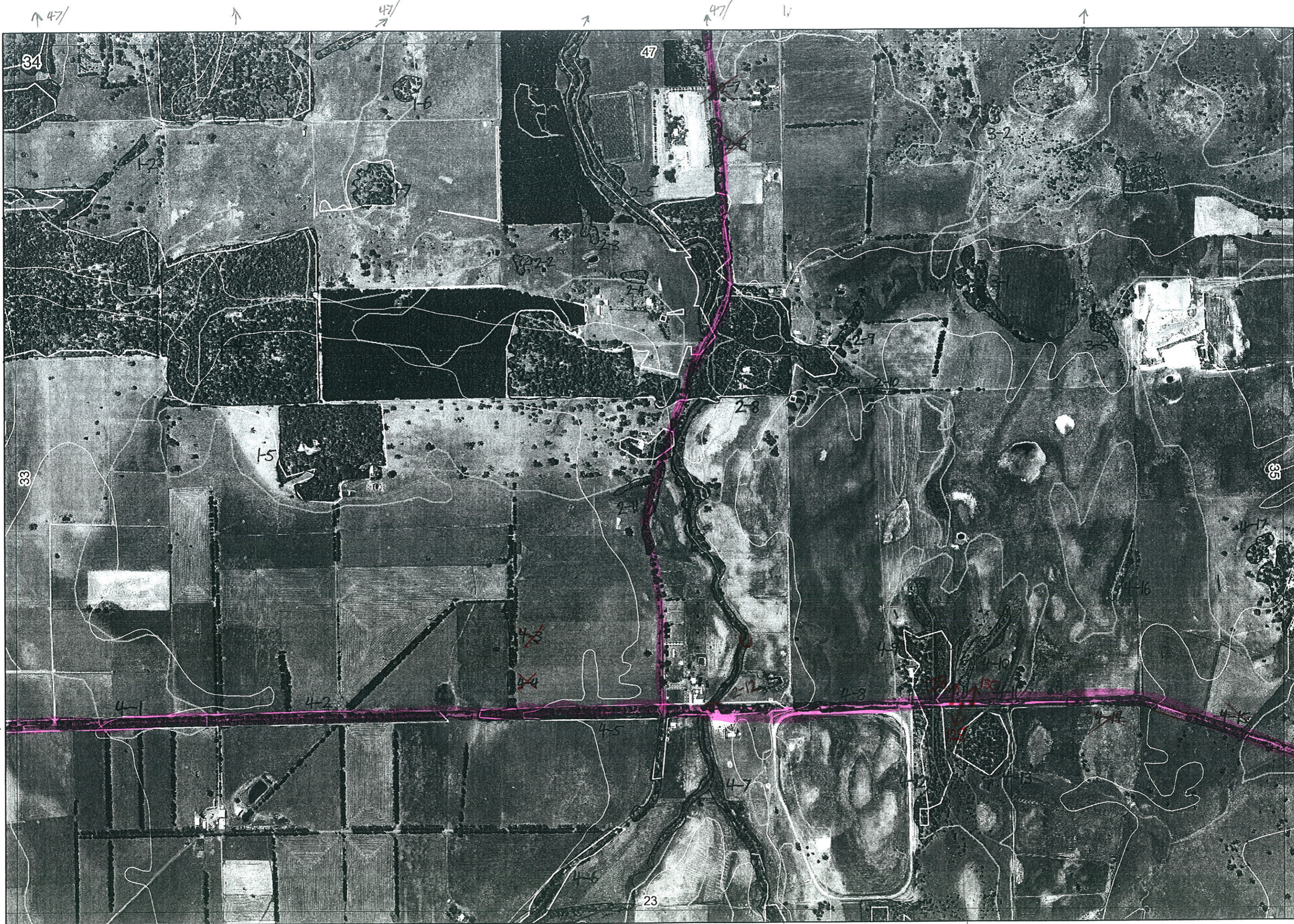
4-5

4-8

4-5

4-7

23



↑ 47/

↑

↑ 47/

↑

↑ 47/

↑

↑

34

47

3-2

1-2

1-6

1-5

33

35

2-11

2-8

4-9

4-10

4-6

4-1

4-2

4-5

4-8

4-11

4-12

4-13

→ 35/1-4

→ see 35/2-2

23

↑

↑

↓ 23/

ph 129 + 130, 128

1

23/6 AM, EH, DC

11/11/2018

Map Sheet Number 34

Pre Field Recorder(s) AW

Field Recorder(s) _____

Swan Bioplan Vegetation Mapping Data

R E M	RE M2	XM AP	LIN TYPE	L I N E A R	M L U	U N I T S	U P L A N D ?	W E T L A N D ?	V I S I T ?	DETAIL/ Area Name	VEG CON	Field date	OBS From	YNOTASS	D E T V I S R E Q D	COMMENTS	VEG STRUC/ DENS	FCT	DOMINANTS		
																			1	2	3
X1	1	Y	-	-	P	1	Y	-	-		D	-	airial	AW		no access - in gap area	W		Eucrod	Melibo	Euccal
X1	2	-	-	-	P	1					D-C	-	airial	AW		no access - gap area	W		Eucrod	Euccal	
X1	3	Y	-	-	P	2	Y	Y			G-D	-	airial	AW	Y	no access - gap area	F		Euccal	Eucmar	
																	F		Melibo	Eucrod	
																	F				
X1	4	-	-	-	P	2	Y	Y			G-D	-	airial	AW	Y	no access - gap area	F		Euccal	Eucmar	
																	F		Melibo	Eucrod	
																	F		Euccal	Eucmar	
X1	5	-	-	-	P	1	Y	-			D	24/5	dist		N			F			
X1	6	-	-	-	P	1	Y	-			D-D	24/5	airial			no access - gap area	W		Euccal		
X1	7	-	-	-	P	1	Y	-			D-C		airial	AW		no access - gap area	W		Euccal		
X2	1	-	-	-	P	1	Y	-			G-D	12/5	dist					F	Euccal	Agoffe	
X2	2	-	-	-	P	1	-	Y			5	23/6	dist					W	Melrha		
X2	3	-	-	-	P	1	-	Y			5	23/6	dist					W	Melrha		
X2	4	-	-	-	P	1	Y	-			5	23/6	dist					W	Agoffe		
X2	5	Y	channel	B	P	2	Y	Y			3	12/5	edge			Mirdil		W	Agoffe	Euccal	
											G-VG				✓	Kinawa Hokamp Mirdil		F	1b	Euccal	Eucmar
X2	6	-	road	Y	P	1	Y	-								link to 2-5		F		Euccal	
2	7	-	road	Y	P	1										completely degraded		W			

Summary/General Comments

3

Map Sheet Number 34

Pre Field Recorder(s) AW

Field Recorder(s)

Swan Bioplan Vegetation Mapping Data

R E M	R E M2	X M A P	L I N T Y P E	L I N E A R	M L U	U N I T S	U P L A N D ?	W E T L A N D ?	V I S I T ?	D E T A I L / A r e a N a m e	V E G C O N	F i e l d d a t e 200_	O B S F r o m	Y N O T A S S	D E T V I S R E Q D	C O M M E N T S	V E G S T R U C / D E N S	F C T	D O M I N A N T S		
																			1	2	3
x4	6	y	road channel	y	p	2	y	y			D	12/5	edge		N		F		Eucal		
x4	7	y	channel	y	p	3	y	y			CD-D	12/5	dist				TS E W		Agolin Eucal Agolin	Agofle Eucal	
x4	8	-	road	y	p	3	y	y			CD-D	12/5	edge			Regul	F W W		Eucal Mel pre Agofle	Alotra	
x4	9	-	-	-	p	3	y	y			G-D	12/5	edge		✓	link to 4-10 Leplan	W		Agofle		
																	W		Mel pre	Astfas	
																	W		Alotra	Eucal	
4	10	-	-	-	p	2	-	y							✓	link to 4-9	W		Alotra Mel pre	Eucal Astfas	
x4	11	-	road	y	p	1	y	-			D	12/5	edge		N	partial sp. list	W		Alotra	Mel pre	Agofle
x4	12	-	-	-	p	4	y	y			D-G	12/5	dist		Y		F E TS		Agofle Eucal Mel pre	Mel pre Agofle Kingia	Mel pre Alotra
4	14	-	road	y	p	1	y	-									F		Eucal		
4	15	y	road	y	p	3	y	y									F W SC		Eucal Mel Mel pre		
x4	16	-	-	-	p	1	-	y			CD-D	12/5	dist				W		Eucal	Mel pre	
x4	17	-	-	-	p	1	y	-			CD-D	12/5	dist				W		Agofle	Eucal	

photo 129

Summary/General Comments

REM	RE M2	XM AP	LIN TYPE	LINEAR	MLU	UNITS	UPLAND?	WETLAND?	VISIT?	DETAIL/ Area Name	VEG CON	Field date	OBS From	YNOTASS	DET VIS REQ	COMMENTS	VEG STRUC/DENS	FCT	DOMINANTS		
																			1	2	3
x2	8	-	channel	B	P	3	Y	Y			G-V4	12/5	edge		Y	Dawson Mirdit	F	1b?	Eucal	Eucmar	
											CO-D	12/5	edge			Calspruni, Charow Melinc	F		Agotte	Eucal	
												12/5	"				TSH		Agolin	Eucal	
x2	9	-	-	-	P	1	Y	-			CO-D	12/5	dist				F		Agotte		
x2	10	-	fence	Y	P	1	Y	Y			CO	12/5	aerial				W		Eucal		
x2	11	-	road	Y	P	2	Y	Y			CO-D	12/5	edge				F		Eucal		
✓	3	1	-	-	P	1	Y	-			CO-D	12/5	dist				W		Agotte		
X	3	2	-	-	P	1	-	Y			D	12/5	dist				W		Eucal		
X	3	3	Y	-	P	1	Y	-			D	12/5	dist				F		Melrha	Melpre	Eucnd
✓	3	4	-	-	P	1	-	Y			D	12/5	dist				F		Melrha	Melpre	
X3	5	-	-	-	P	1	Y	-			CO-D	24/5	aerial				F		Eucal		
X	4	1	road	Y	P	1	Y	-			CO-D	24/5	E				F		Eucal		Delete 4-1
X4	2	-	road	Y	P	2	Y	-			D-G	24/5	E		N	<i>Persea elliptica</i> <i>Decaspermum hookeri</i> Kingia <i>Calla varia</i>	F		Eucal	Eucmar	
																	W		Melrhopk		
	4	3	road	Y	P	1	Y	-		plantings							F		Eucal		
	4	4	road	Y	P	1	Y	-		plantings							F		Eucal		
X	4	5	road	Y	P	1	Y	-			CO-D	12/5	edge				F		Eucal	Eucmar	

Summary/General Comments

x2 12 road CD 12/5 edge F Eucal