



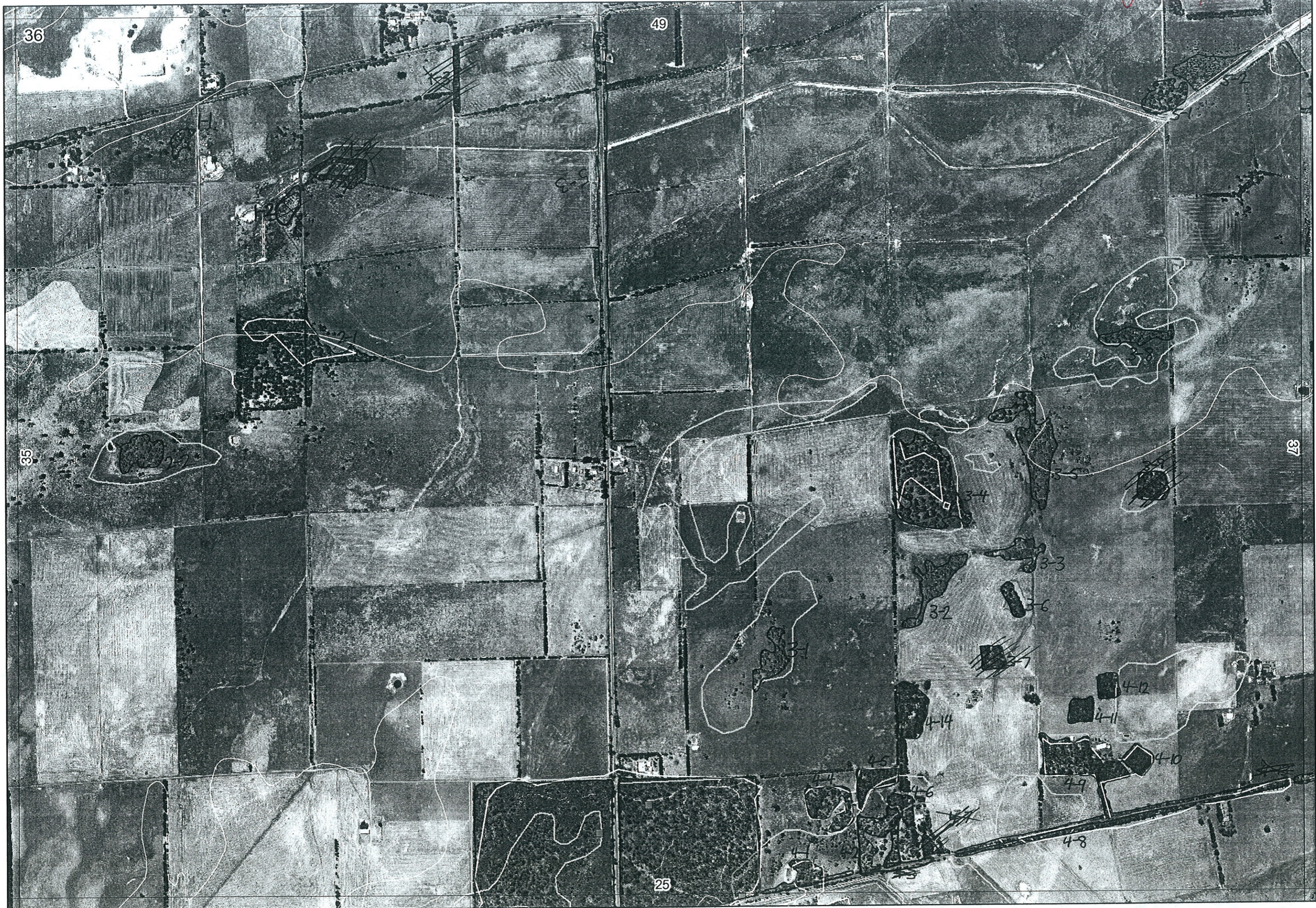
← 35/4-6

↓ 25/1-1

↓ 25/1-3

→

Ag 26/6/06



36

49

35

37

←
15/4-6

3-4

3-3

3-2

3-6

4-12

4-11

4-14

4-10

4-8

4-5

4-6

25

↓
25/1-1

↓
25/1-3

→

#X9
15/4-6



25/1-1

25/1-3

1

Map Sheet Number 36

Pre Field Recorder(s) AW

Field Recorder(s)

Swan Bioplan Vegetation Mapping Data

MAX 24/8

R E M	RE M2	XM AP	LIN TYPE	L I N E A R	M L U	U N I T S	U P L A N D ?	W E T L A N D ?	V I S I T ?	DETAIL/ Area Name	VEG CON	Field date 200_	OBS From	YNOTASS	D E T V I S R E Q D	COMMENTS	VEG STRU C/ DENS	FCT	DOMINANTS		
																			1	2	3
X1	1	-	-	-	P	1	Y	-			CD-D	11/5	edge		N		F		Peppi	Ment?	
X1	2	-	-	-	P	1	-	Y			CD-D	9/5	dist		N		TS		Melvim	Kincaus	
1	3	-	road	Y	P	1	Y	-		planting							F		Euccal		
X2	1	-	-	-	P	1	Y	-			CD-D	9/5	dist		N		F		Euccal		
X2	2	-	-	-	P	1	-	Y			CD-D	11/5	dist	dis			W		Mel rha		
X3	1	-	-	-	P	1	-	Y			CD-D	9/5	dist				W		Mel raph		
X3	2	-	-	-	P	1	-	Y			CD-D	11/5	aerial				W		Mel rha		
X3	3	-	-	-	P	1	-	Y			CD-P	11/5	aerial				W		Mel rha		
X3	4	-	-	-	P	1	Y	-			CD-D	11/5	v.dist		N		W		Euccal		
X3	5	-	-	-	P	2	-	Y			CD-P	11/5	aerial				W		Mel rha		
																	W		Euccal		
3	6	-	-	-	P	1	Y	-		planting	CD-D	11/5	aerial				F		Euccal		
3	7	-	-	-	P	1	Y	-		planted							F		Euccal		
X3	8	-	-	-	P	1	-	Y			CD-P	11/5	aerial				W		Mel rha		
3	9	-	-	-	P	1	Y	-		planted							F		Euccal		
X4	1	-	road	B	P	2	Y	Y			CD-D	9/5	dist.		N		W	na	m. pres.		
X4	2	-	-	-	P	1	Y	-		road verge good condition	GID	9/5	edge		N	See spp list.	W		Peppi.		
4	3	-	-	-	P	1	Y	-									W		Euccal		

9-7-31-2402

Summary/General Comments

2

Map Sheet Number 36

Pre Field Recorder(s) AW

Field Recorder(s)

Swan Bioplan Vegetation Mapping Data

R E M	RE M2	XM AP	LIN TYPE	L I N E A R	M L U	U N I T S	U P L A N D ?	W E T L A N D ?	V I S I T ?	DETAIL/ Area Name	VEG CON	Field date 200_	OBS From	YNOTASS	D E T V I S R E Q D	COMMENTS	VEG STRUC/ DENS	FCT	DOMINANTS		
																			1	2	3
x4	4	-	-	-	P	2	Y	Y			CD-D	1/5	dist		N		F		① Eucal	② Mel/10	
X4	5	-	-	-	P	1	Y	-			D	1/5	dist		N		F		Eucal	Peppie	
X4	6	-	-	-	P	1	Y	-			CD-D	1/5	dist				F		Eucal	Peppie	
4	7	-	-	-	P	1	Y	-		planted							F		Eucal		
X4	8	-	road	Y	P	2	Y	Y			CD-D	1/5	disc			Agofaru silver sp	W		① Melpre	② Marri	
4	9	-	-	-	P	1	Y	-									F		Eucal		
4	10	-	-	-	P	1	Y	-									F		Eucal		
4	11	-	-	-	P	1	Y	-									F		Eucal		
4	12	-	-	-	P	1	Y	-									F		Eucal		
4	13	-	road	Y	P	1	Y	-									F		Eucal		
4	14	-	-	-	P	1	Y	-		plantings							F		Eucal		
x5	1	-	-	-	P	1	Y	-			CD	1/5	dist		V		W		Eucal		
x5	2	-	-	-	P	1	-	Y			CD-D	1/5	dist		W		W		melanc	Mel vim	
x5	3	-	road	Y	P	2	Y				CD-D	1/5	edge		N		F		Marri		
																	TS		Mel uncinata.	M. later.	

Summary/General Comments