

Ag

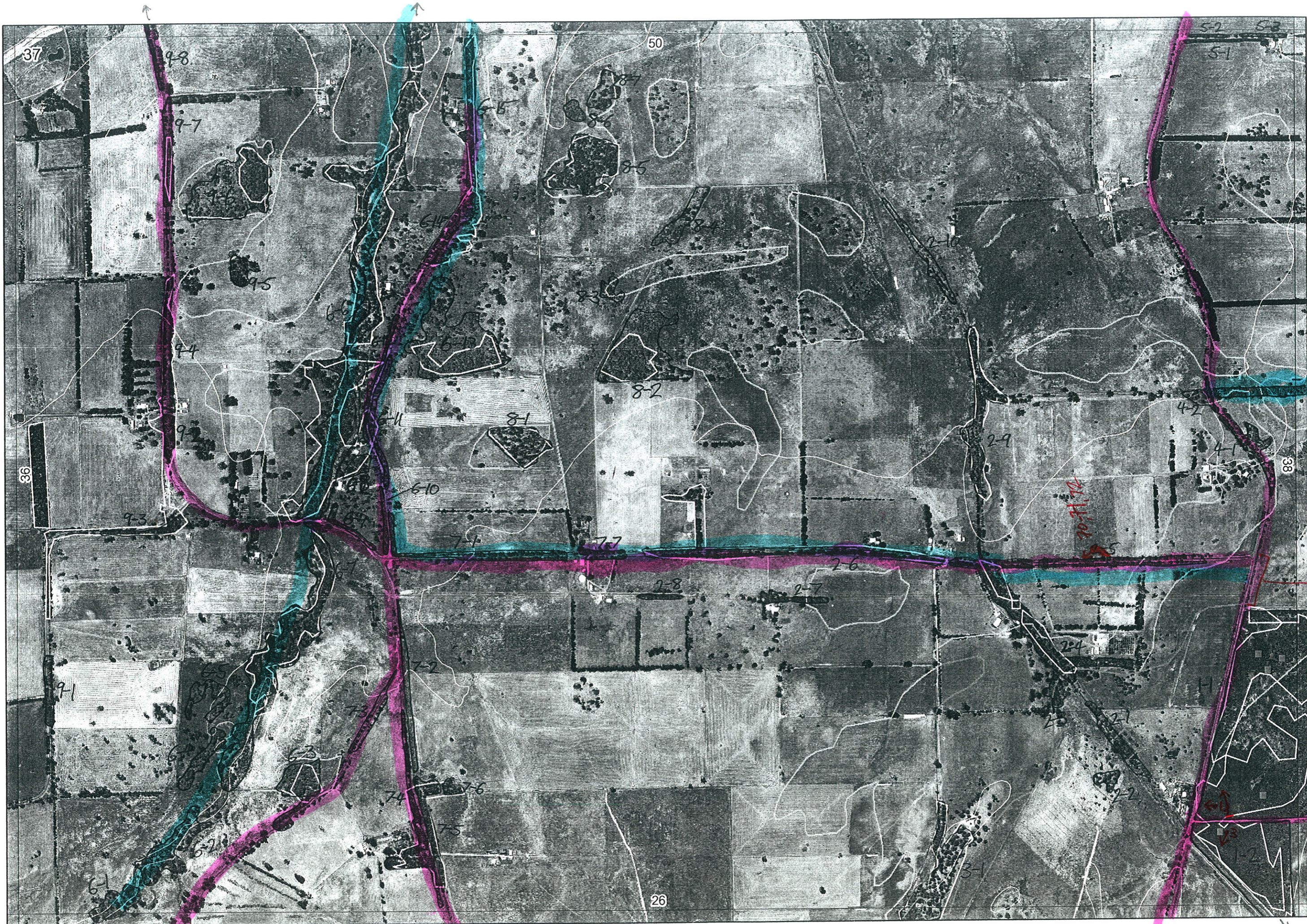


38/2-1

→

↘

↘



→ 38/2-1

Melvin
Particulars

↑

↓

R E M	RE M2	XM AP	LIN TYPE	L I N E A R	M L U	U N I T S	U P L A N D ?	W E T L A N D ?	V I S I T ?	DETAIL/ Area Name	VEG CON	Field date 200_	OBS From	YNOTASS	D E T V I S R E Q D	COMMENTS	VEG STRUC/ DENS	FCT	DOMINANTS		
																			1	2	3
1	1	y	-	-	P	4+	y	y		see last sheet	VG-E				y	DRF, TEC, spirit flora, SCP plots	-	-			
1	2	y	-	-	P	4+	-	y		see last sheet	VG-E				y	"	-	-			
x	6	6	y	channel	y	P	1	-	y		D	1/4	dist		N		W	-	noni	Eucal	Melba
x	6	7	-	channel	y	P	2	-	y		D	1/4	edge		N		W	-	Eucal	Melba	Melba
x	2	1	-	drain	y	P	2	-	y		D	26.5	D				W		MELPRE?	EUC RUDIS	
x	2	2	-	-	-	P	1	-	y		D	26.5	D				W		Mel PRE?		
x	2	3	-	-	-	P	1	-	y		D	26.5	A				F		Mel PRE?	EUC RUDIS	
x	2	5	-	-	-	-	-	-	-								SH		Xanpre	Anala	
										Condition changes from G to D, W of creek line.											
x	2	5	-	drain road	y	P	3	y	y		G-D	1/5	edge				F		Eucal	Peppie	Melba
										some Acacia planting - spp list - black rockatras - white tails											
2	6	-	road	y	P	1	y	-		joined to 2.5							F		Eucal		
2	7	-	-	-	P	1	y	-		plantings							F		Agoffe		
2	8	-	-	-	P	1	y	-		plantings							F		Agoffe		
x	2	9	-	several channel	y	P	1	y	-		C/D	1/5	dist		N		W		Marr	Peppie	
2	10	-	drain	y	P	1	-	y			C/D		dist				W		Melba	Eucal	
x	3	1	y	-	-	P	1	y	-		C/D	1/5	dist		N		F		Agoffe	Eucal	
x	4	1	-	road	y	P	2	y	y		C/D	1/5	edge		N	white tail - black rockatras	F		Eucal	Agoffe	
4	2	-	-	-	P	1	y	-			C/D	1/5	edge		N		TS		Csp. whicher	Kunmie	
4	2	-	-	-	P	1	y	-			C/D	1/5	edge		N		W		Eucal		

some (2) Marr

933

Summary/General Comments

2

Map Sheet Number 37

Pre Field Recorder(s) AEW

Field Recorder(s)

Swan Bioplan Vegetation Mapping Data

R E M	RE M2	XM AP	LIN TYPE	L I N E A R	M L U	U N I T S	U P L A N D ?	W E T L A N D ?	V I S I T ?	DETAIL/ Area Name	VEG CON	Field date 200_	OBS From	YNOTASS	D E T I V I S R E Q D	COMMENTS	VEG STRU C/DENS	FCT	DOMINANTS			
																			1	2	3	
5	1		road	Y	P	1	Y			plantings							F		Eucal			
5	2		road	Y	P	1	Y										F		Eucal			
5	3		road	Y	P	1	Y										F		Eucal			
X6	1	Y			P	1	Y				CD -D	26.5	0				W		MARRI	Mel PRE		
X6	2	Y	channel	Y	P	1	Y				CD -D	26.5	0				W		MARRI	Mel PRE		
X6	3				P	3	Y	Y			CD	26.5	Trans				F		① Eucal			
																	E		② Mel RHA	③ Mel RHA, Mel PRE		
X6	4				P	1	Y				CD -D	26.5	0				F		Mel RHA			
X6	5				P	1	Y				CD -D	26.5	0				F		Mel RHA			
X	see sheet ① for 6-6 and 6-7																					
X6	8				P	1	Y				CD -D	26.5	0				W		Eucal			
X6	9		road	Y	P	1	Y				CD -D	26.5	Trans				W		Eucal			
X6	10		road	Y	P	1	Y				CD -D	26.5	Trans				W		Eucal	MEL RHA		
X6	11		road	Y	P	1	Y	Y			CD -D	26.5	Trans				F		Eucal	MEL RHA	Eucal	
																	W		Eucal			
X6	12		road	Y	P	1	Y				G	26.5	Trans				F		Eucal	RUBIS	MEL RHA	
X6	13				P	1	Y				CD -D	26.5	E				W		Eucal	Mel RHA		
X6	14		road	Y	P	1	Y				D-CD	26.5	E				F		Eucal			

Summary/General Comments

G. BRACH 2
KINGIA MEL INC.
BANKSIA LIT. C. ROYCE

C. royeri / spp list

SOME FLOOD GUM ON
15705

3

Map Sheet Number 37

Pre Field Recorder(s) AW

Field Recorder(s)

Swan Bioplan Vegetation Mapping Data

R E M	RE M2	XM AP	LIN TYPE	L I N E A R	M L U	U N I T S	U P L A N D ?	W E T L A N D ?	V I S I T ?	DETAIL/ Area Name	VEG CON	Field date 200_	OBS From	YNOTASS	D E T V I S R E Q D	COMMENTS	VEG STRUC/ DENS	FCT	DOMINANTS		
																			1	2	3
X6	15	-	road	Y	P	1	Y	-			ED	26.5	E			F		Eucal	P2009 GUP	PRE PRY	
X7	1	-	road	Y	P	2	Y	Y		see 7A	D	21.5	edge			F		Eucal	Jarrah.		
											D	21.5	"			W		Eucal	Mel raphinophylla	m. uncinata.	
											D	26.5	E					Eucal	MEL-UNG	MEL RAA	
X7	2	-	road	Y	P	2					D	26.5	E								
X7	4	-	road	B	P	2	Y	-			D	26.5	trans								
X8	1	-	-	-	P	1	Y	-			ED	26.5	D								
X8	2	-	-	-	P	2	-	Y			I										
											ED	26.5	A								
X8	3	-	-	-	P	1	-	Y													
X8	4	-	-	-	P	1	-	Y													
X8	5	-	-	-	P	1	Y	-			D	26.5	D								
X8	6	-	-	-	P	1	-	Y			ED	26.5	D								
X8	7	-	-	-	P	1	Y	-			ED	26.5	A								

Summary/General Comments

4

Map Sheet Number 37

Pre Field Recorder(s) ALW

Field Recorder(s)

Swan Bioplan Vegetation Mapping Data

R E M	RE M2	XM AP	LIN TYPE	L I N E A R	M L U	U N I T S	U P L A N D ?	W E T L A N D ?	V I S I T ?	DETAIL/ Area Name	VEG CON	Field date 200_	OBS From	YNOTASS	D E T V I S R E Q D	COMMENTS	VEG STRUC/ DENS	FCT	DOMINANTS		
																			1	2	3
X9	1	-	road	Y	P	1	Y	-			CD-D	26-9					F		Eucal		
9	2	-	road	Y	P	1	Y	-			CD-D						F		Eucal		
X9	3	-	road	Y	P	1	Y	-			D	26-5	trans		KINGIA		F		Eucal		
X9	4	-	road	Y	P	2	Y	Y			CD-D	26-5	trans				F		MEL RHA MARRI		
X9	5	-	-	-	P	1	Y	-			CD-D	26-5	D				F		Eucal		
X9	6	-	-	-	P	1	-	Y			CD-D	26-5	D				W		Mel RHA	MARRI	
X9	7	-	road	Y	P	1	Y	-			CD-D	26-5	trans		NO		F		Eucal		
X9	8	Y	road	Y	P	1	Y	-			CD-D	26-5	edge		N		F		Eucal		
X1	1	Y	-	-	P	5	Y	Y	Y	fish rd NR	Fr/4	9/5	edge		N	signif flora, TEC, SCP, plot	W	7	Melunc	Melcut	Melpauci
																	HS	10a	Repit	Melunc	Hobwar
																	HS	2	Perell	Kinaw	Holecerot
																partial sp lists	W	21b	Banatt	Eucmar	Nuyflo
																	F	1b	Eucal	Eucmar	Kinaw
X1	2	Y	-	-	P	2	-	Y	N	fish rd NR	1/5	9/5	repeat		N	signif spp, TEC, SCP, plot	HS	10a	Repit	Melunc	Holewar
																	HS	2	Perell	Kinaw	Holecer

Summary/General Comments