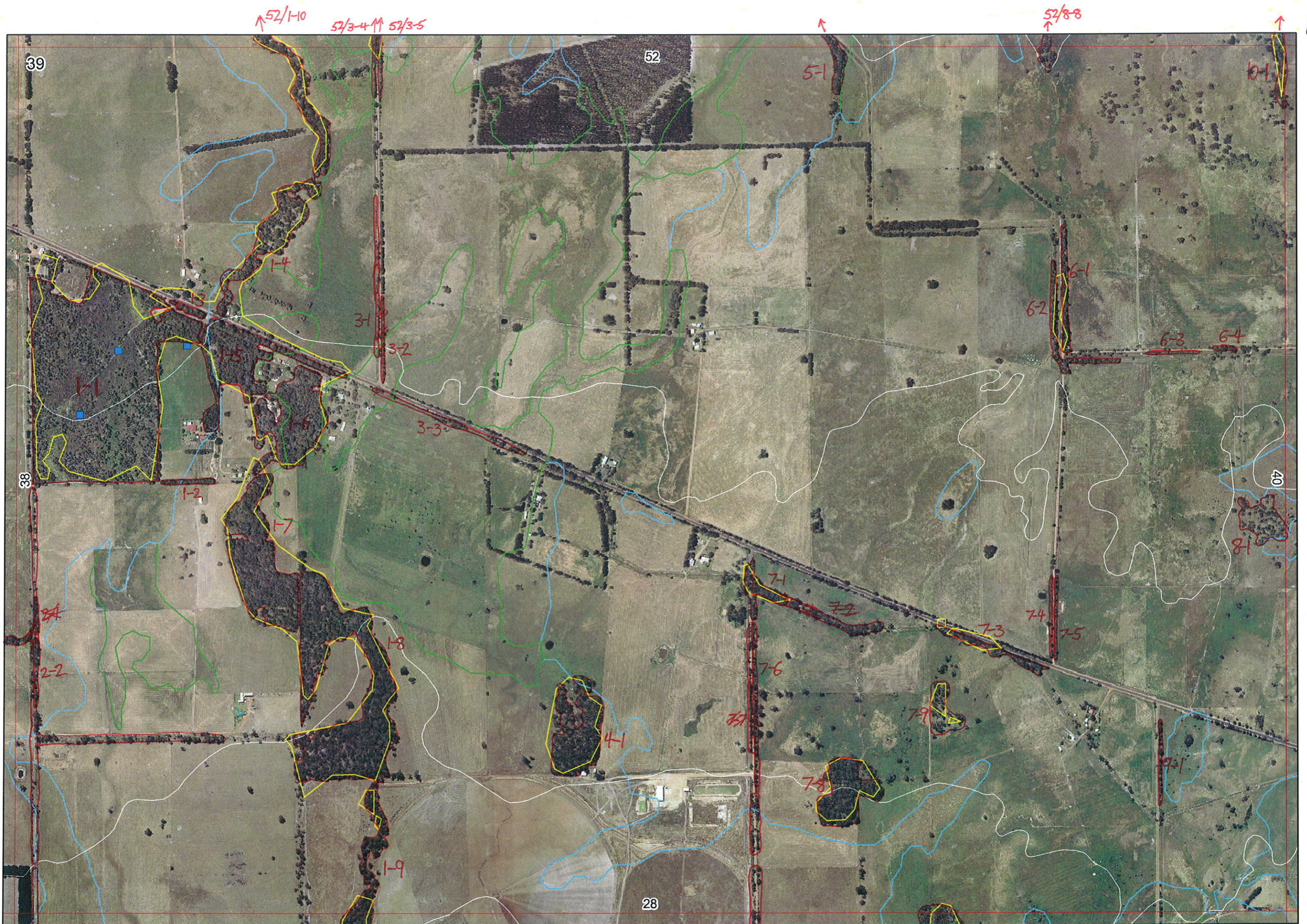


Ag



39

52

38

40

28

28/1-1

28/5-1

28/1

52/1-10

52/3-4

52/3-5

52/8-8

5-1

5-1

1-4

3-1

3-2

3-3

6-1

6-2

6-3

6-4

1-2

1-7

1-8

2-1

2-2

7-1

7-2

7-3

7-4

7-5

4-1

7-7

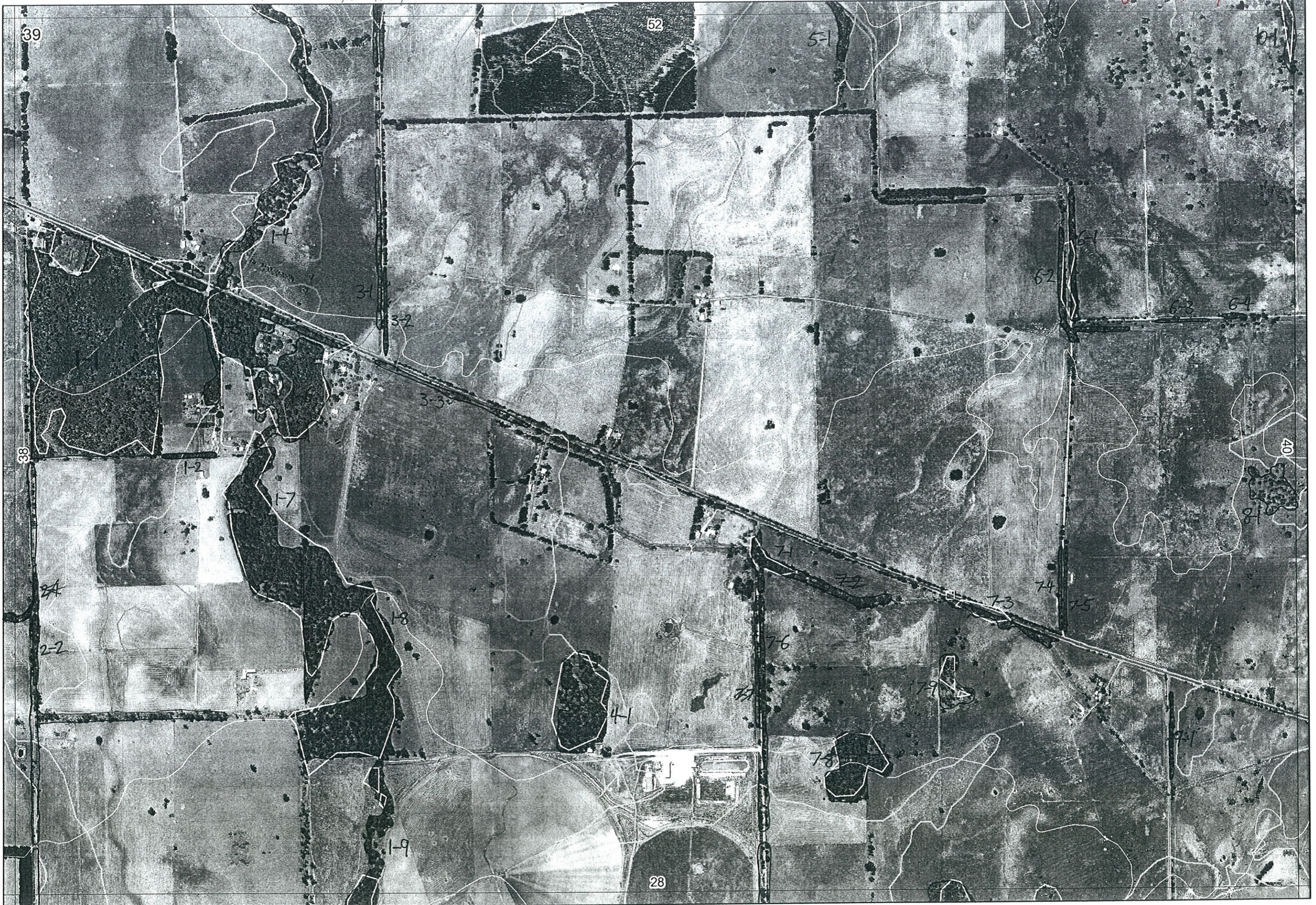
7-8

9-1

1-9

52/1-10 52/3-4 52/3-5

52/8-8 Ag 14/8/06



28/1-1

↓

28/5-1

28/



52/1-10

52/3-4 52/3-5

52/8-8

39

52

5-1

10-1

1-4

3-1

3-2

6-2

6-3

6-4

1-2
plantings

1-7

40

8-1

8/ ←

2-1

2-2

1-8

red map

7-1

7-2

7-3

7-4

7-5

4-1

7-6

7-7

7-8

9-1

1-9

28

28/ ↓

1

Map Sheet Number 39

Pre Field Recorder(s) ACU

Field Recorder(s) 7/7AW, EH

Swan Bioplan Vegetation Mapping Data

MAR 24/13

R E M	R E M 2	X M A P	L I N E T Y P E	L I N E A R	M L U	U N I T S	U P L A N D ?	W E T L A N D ?	V I S I T ?	D E T A I L / A r e a N a m e	V E G C O N	F i e l d d a t e 2006	O B S F r o m	Y N O T A S S	D E T E R M I N E D ?	C O M M E N T S	V E G S T R U C / D E N S	F C T	D O M I N A N T S			
																			1	2	3	
X11	-	-	-	-	P	3	Y	Y	-	Yongardup reserve (see summary report)	W-E	-	-	-	Y	DRF, TEC, signif flora, SCP plots. Burnt 2 early March (last Easter)	F	1b	Eucal	Eucmar		
												7/7	edge			④ Eucal, Agofle, Eucpat E most bit		2	Melin			
X12	-	-	fence	Y	P	1	Y	-	Y			7/7				plantings						
X13	-	-	road	Y	P	1	Y	-	N			5	7/7	edge				F	1b	Eucal	Agofle	Delete 1-3 (not digitized)
X15	-	-	-	-	P	1	Y	Y	Y			33	7/7	edge		Leuver, Brapra, chaery WRP _s	F	1b?	Eucal	Eucpat	Agofle	
X16	-	-	-	-	P	2	Y	Y	Y			4	7/7	dist		WRP _s	F	1b	Eucal	Agofle		
X17	-	-	channel	B	P	1	Y	N	Y			G-0	7/7	dist		Eucpat?	F		Eucpat	Agofle	Eucal	
																		F		Eucpat?	Agofle	
X14	-	-	channel	Y	P	1	-	Y		Original River Channel		D-0	25/4	dist			F		Eucal	Agofle	Eucpat	Eucmar?
X18	-	-	channel	B	P	2	Y	Y	Y			4.7	7/7	dist		Blackbutt creekline -?	F		Marri	Agofle	Eucmar?	
																		F		Eucal		
X19	Y	-	channel	Y	P	1	-	Y	Y			4.7	7/7	dist			F		Agofle	Eucal		
X21	-	-	road	Y	P	1	Y	-										F		Eucal		
X22	-	-	road	Y	P	1	Y	-				D-0	25/5	T		Kingia		F		Eucal	Euc.hae	Muhysta
X31	-	-	road	Y	P	2	-	Y				D-0	24/4	trans		species listed	SH		Ac. ext	Hyp angust	Ad meis	
												D-0	24/4	trans		Mel lat	F		Melrhaph			

Summary/General Comments

X33 - road Y 1 Y N Y 53 7/7 edge N Makrus F Eucal Kingia

2

Map Sheet Number 39

Pre Field Recorder(s) AW

Field Recorder(s) 7/7 AW, EH

Swan Bioplan Vegetation Mapping Data

R E M	RE M2	XM AP	LIN TYPE	L I N E A R	M L U	U N I T S	U P L A N D ?	W E T L A N D ?	V I S I T ?	DETAIL/ Area Name	VEG CON	Field date 200_	OBS From	YNOTASS	D E T V I S R E Q D	COMMENTS	VEG STRU C/DENS	FCT	DOMINANTS		
																			1	2	3
X3	2	-	road	Y	1	P	-	Y			CO-D	24/6	trans			plantings near As. flex.	F		Melrhaph	Eucal	
X4	1	-	-	-	1	P	Y	-	Y		CO	7/7	dist				F	-	Eucal	Eucmar	
X5	1	Y	channel	Y	1	P	Y	-	Y			7/7	dist			plantings, poss with some Eucrud, Melsp.					
X6	1	-	road	Y	1	P	Y	-			5	7/7	edge				F		Eucal	Kingia	
X6	2	-	road	Y	1	P	Y	-	Y		5.3	7/7	edge				F		Eucmar	Eucal x hae	
X6	3	-	road	Y		P	-	Y	Y		5	7/7	edge			Schrig, Acaine	SH		c.sp Whicher	Melpre	Astfas
X6	4	-	road	Y	1	P	-	Y	Y		5.3	7/7	edge				F		Eucal	Kingia	
X7	1	-	channel	Y	1	P	Y	-	Y		CO	7/7	edge			Melpre	F		Eucal		
X7	2	-	channel	Y	1	P	Y	-								joined to 7-1					
X7	3	-	channel	Y	1	P	Y	-	Y		CO	7/7	edge				F	-	Eucal	Eucmar	
X7	4	-	road	Y	2	P	-	Y	Y		4	7/7	edge			Acafla, Hakser, Gandec, Agolin, Mellat, Aceprobia, Aotgra, Eutviv	TS①		Melpre	Astfas	Analae
X7	5	-	road	Y	2	P	-	Y	Y		4	7/7	edge			numerous AW notes scattered overstorey plantings	TS②		Agolin	Aotgra	Melpre
X7	6	-	road	Y	1	P	Y	-	Y		4.7	7/7	edge			Melpre, Hakser, Kinaus Dieback impacted.	F		Eucal	Eucmar	
X7	7	-	road	Y	1	P	Y	-								joined to 7-6			Eucal		
X7	8	-	-	-	1	P	Y	-	Y		4	7/7	dist		Y	fenced.	F		Eucal	Eucmar	
X8	1	-	-	-	1	P	-	Y	Y		5.3	7/7	dist			Eucal on sedge	W		Eucrud	Melpre	
X9	1	-	road	Y	1	P	Y	-	Y		5.3	7/7	edge			Mellat, Melinc, Analae, Kingia overstorey all planted.	SH		Melpre	Melinc	
X10	1	Y	channel	Y	1	P	-	Y	Y		5.3	7/7	dist				W		Eucrud		

Summary/General Comments

X79 N - N 1 Y N Y

5.3 7/7 dist

Eucal Eucmar

P2