

Ag



44

57

45

31

57/6-5

57/6-5

45/1-4

45/1-4

45/1-5

31/1-6

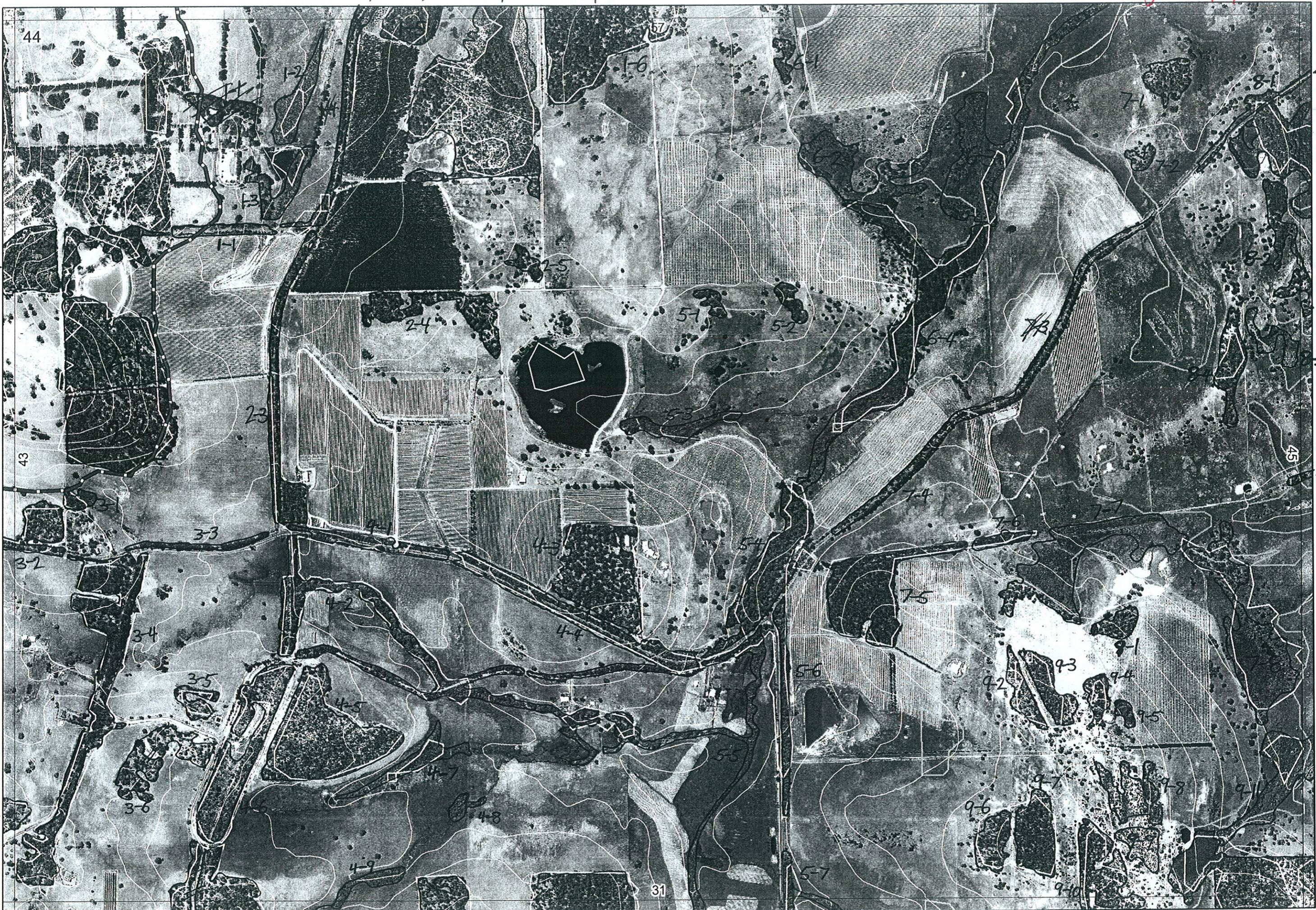
31/2-1

31/2-2

45/1-2

57/6-5 ↑ ↑ 57/6-5 ↑ ↑

↑ Ag 26/6/06



3/1-1 ←

3/1-6 ↓

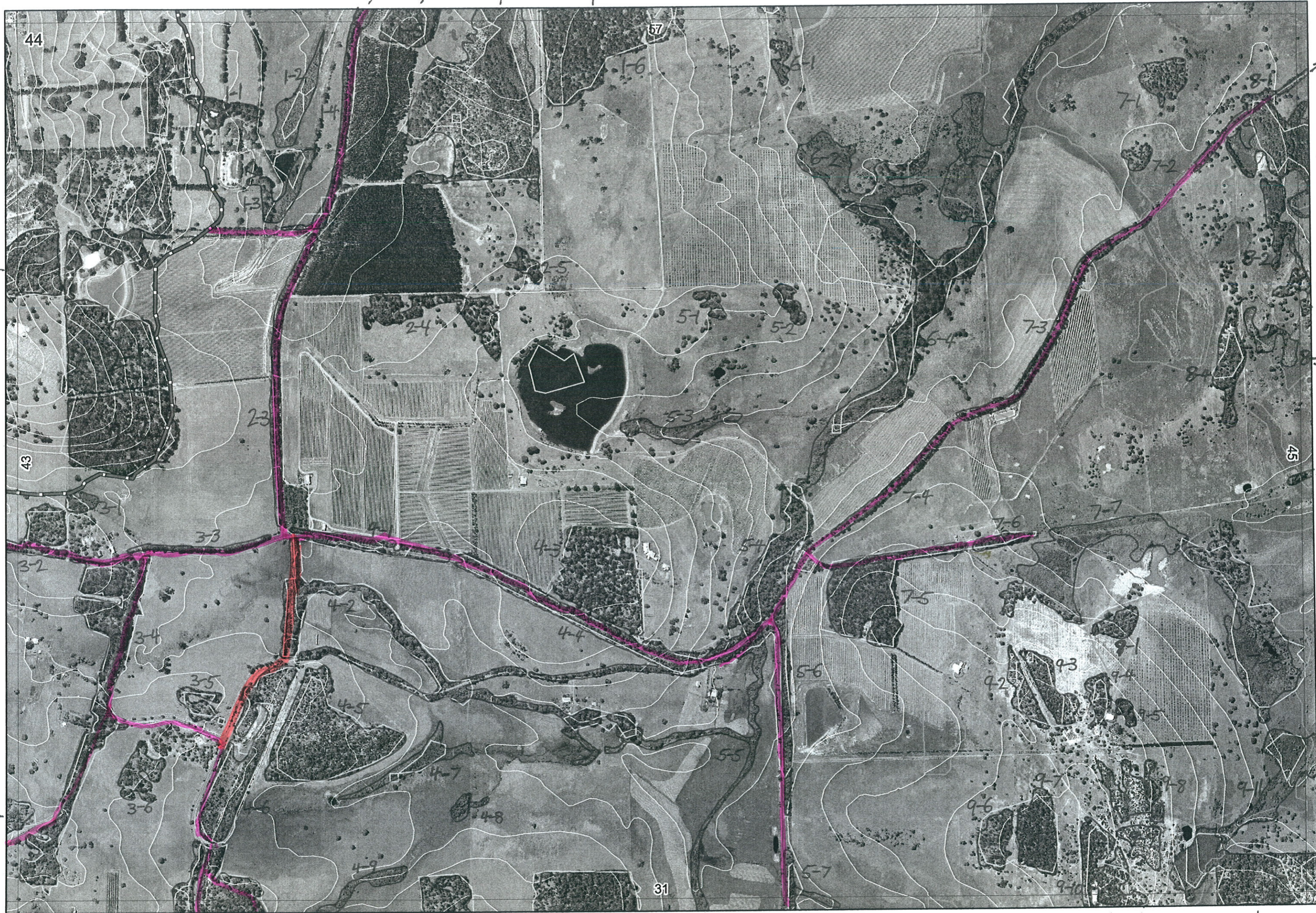
3/2-1 ↓

3/2-2 ↓

45/1-2 ↓

45/1-5 →

45/1-4 →



44

57

57/6-5

57/6-5

45/1-4

45/1-5

45/1-2

31/

31/

31/

31/

31

Map Sheet Number 44

Pre Field Recorder(s) AW

Field Recorder(s)

Swan Bioplan Vegetation Mapping Data

R E M	RE M2	XM AP	LIN TYPE	L I N E A R	M L U	U N I T S	U P L A N D ?	W E T L A N D ?	V I S I T ?	DETAIL/ Area Name	VEG CON	Field date	OBS From	YNOTASS	D E T I V I S I O N	COMMENTS	VEG STRU CTURE DENS	FCT	DOMINANTS		
																			1	2	3
1	1	-	-	-	WS	1	Y	-			D-C	22/6	edge			F		Eucal	Euc marg		
1	2	-	-	-	WS	1	-	Y			G	22/6	dist			SH		Agolin			
1	3	-	-	-	WS	2	Y	Y			D-G	22/6	edge		Bullch Lopid tetra Callistichus	F SH		Euc patens Agolin	Euc cal		
1	4	-	road	Y	WS	1	Y	-								F		Eucal			
1	5	Y	-	-	WS	1	Y	-			D	22/6	aerial			F		Eucal	Euc marg		
1	6	Y	-	-	WS	1	Y	-			G-D	22/6	aerial			F		Eucal	Euc marg		
2	1	-	-	-	MS	1	Y	-			D-C	22/6	dist			F		Eucal	Euc marg		
2	2	-	-	-	MS	1	Y	-			D-C	22/6	dist			F		"	"		
2	3	-	road	Y	WS	1	Y	-			G-D	22/6	edge		Leucop. vert	F		Eucal	Euc marg	Apo flex	
2	4	-	-	-	WS	1	Y	-			D-C	22/6	dist			F		Eucal	Euc marg		
2	5	-	-	-	WS	1	Y	-			D-C	22/6	aerial			F		Eucal	Euc marg		
3	1	-	-	-	WS	1	-	Y			D	22/6	edge			F		Agoflex	Eucal		
3	2	Y	road	B	WS	1	Y	-			D-G	22/6	edge			SH		Agoflex	Agolin	Try Flo	
3	3	-	road	Y	WS	1	Y	-			D	22/6	edge			F		Eucal	Apo flex		
3	4	-	road	B	WS	2	Y	-			D	22/6	edge		Allocas. on unpland site	F		Euc marg	Eucal	Allo fras	
3	5	-	-	-	WS	1	Y	-			D-C	22/6	dist			W		Agoflex	Eucal	Allo fras	
3	6	-	-	-	WS	1	Y	-			D	22/6	dist			W		Allo fras	Eucal	Agoflex	
4	1	-	road	Y	WS	1	Y	-			G	22/6	edge			F		Eucal	Euc marg	Agoflex	

Summary/General Comments

2

Map Sheet Number 44

Pre Field Recorder(s) PW

Field Recorder(s)

Swan Bioplan Vegetation Mapping Data

R E M	R E M2	X M A P	L I N T Y P E	L I N E A R	M L U	U N I T S	U P L A N D ?	W E T L A N D ?	V I S I T ?	D E T A I L / A r e a N a m e	V E G C O N	F i e l d d a t e 200_	O B S F r o m	Y N O T A S S	D E T V I S R E Q D	C O M M E N T S	V E G S T R U C / D E N S	F C T	D O M I N A N T S		
																			1	2	3
4	2	-	road/channel	Y	WS	2	Y	Y			G	22/6	edge				F		Eucal	Asoflex	
											G	22/6	edge			Lapid effron, Trigonostemon floric, Cyath. Blackbutt	F		Asoflex	Trigonostemon floric	
4	3	-	-	-	WS	1	Y	-			D-G	22/6	edge				F		Eucal	Euc mar	Allofras
4	4	-	road	Y	WS	1	Y	-			G	22/6	edge				SH		Agoper	Euc mar	Asoflex
4	5	-	-	-	WS	1	Y	-			D-G	22/6	dist				F		Euc cal	Euc mar	Asoflex
4	6	-	-	-	WS	1	Y	-			D-G	22/6	edge				F		Euc mar	Asoflex	Euc cal
4	7	-	-	-	WS	1	-	Y			D-G	22/6	dist			Euc patens + Juncus sedge land	SH		Agoli		
4	8	-	-	-	WS	1	-	Y			G-D	22/6	dist				SH		Agoli		
4	9	Y	channel	Y	WS	1	-	Y			G-D	22/6	dist				SH		Agoli		
5	1	-	-	-	WS	1	Y	-			D	22/6	aerial				F		Agoflex		
5	2	-	-	-	WS	1	Y	-			D	22/6	aerial				F		Agoflex		
5	3	-	channel	Y	WS	1	-	Y			D	22/6	aerial				SH		Agolin		
5	4	-	channel	Y	WS	1	-	Y			VG	22/6	edge			Lapid. effron, Taraxacum f. Blackbutt	SH		Agoflex	Euc cal	
5	5	Y	channel	Y	WS	1	-	Y			G	22/6	edge			Blackbutt	SH		Agolin		
5	6	-	road	Y	WS	1	Y	-			VG	22/6	edge			Trigonostemon floric, Cyath. Blackbutt	F		Euc mar	Asoflex	
5	7	Y	road	Y	WS	2	Y	Y			VG	22/6	edge			Cyath. Blackbutt, Acacia moerana Hebe las.	F		Euc cal	Euc mar	Agoper
6	1	-	-	-	P	1	Y	-			D	22/6	edge			Blackbutt Hebe las	SH		Agoli	Ac. divergens	
																	F		Euc mar	Euc cal	Allofras
																	F		Agoflex		

Summary/General Comments

4

Map Sheet Number 44

Pre Field Recorder(s) AW

Field Recorder(s)

Swan Bioplan Vegetation Mapping Data

R E M	R E M 2	X M A P	L I N E T Y P E	L I N E A R	M L U	U N I T S	U P L A N D ?	W E T L A N D ?	V I S I T ?	D E T A I L A r e a N a m e	V E G C O N	F i e l d d a t e 2006	O B S F r o m	Y N O T A S S	D E T V I S I O N R E Q D	C O M M E N T S	V E G S T R U C T U R E D E N S	F C T	D O M I N A N T S			
																			1	2	3	
83	-	-	-	P	1	-	Y									Can't see						
84	-	-	-	P	1	Y	-				D	22/6	aerial				F			Agoflex		
91	-	-	-	WS	1	Y	-				G-D	22/6	aerial			Bank atten	F			Alloflex	Agoflex	Eucmar
92	-	-	-	WS	1	Y	-										W					
93	-	-	-	WS	1	Y	-										F			Eucmar	Banatt	
94	-	-	-	WS	1	Y	-										F			Eucmar	Banatt	
95	-	-	-	WS	1	Y	-										F					
96	-	-	-	WS	1	Y	-										F			Eucmar	Banatt	
97	-	-	-	WS	1	Y	-										F			Eucmar	Banatt	
98	-	-	-	WS	1	Y	-										W			"	"	
99	-	-	-	WS	1	Y	-										W			"	"	
910	Y	-	-	WS	1	Y	-										F			"	"	
911	Y	-	-	WS/P	1	-	Y										W					

Summary/General Comments