

Ag



45/5-2

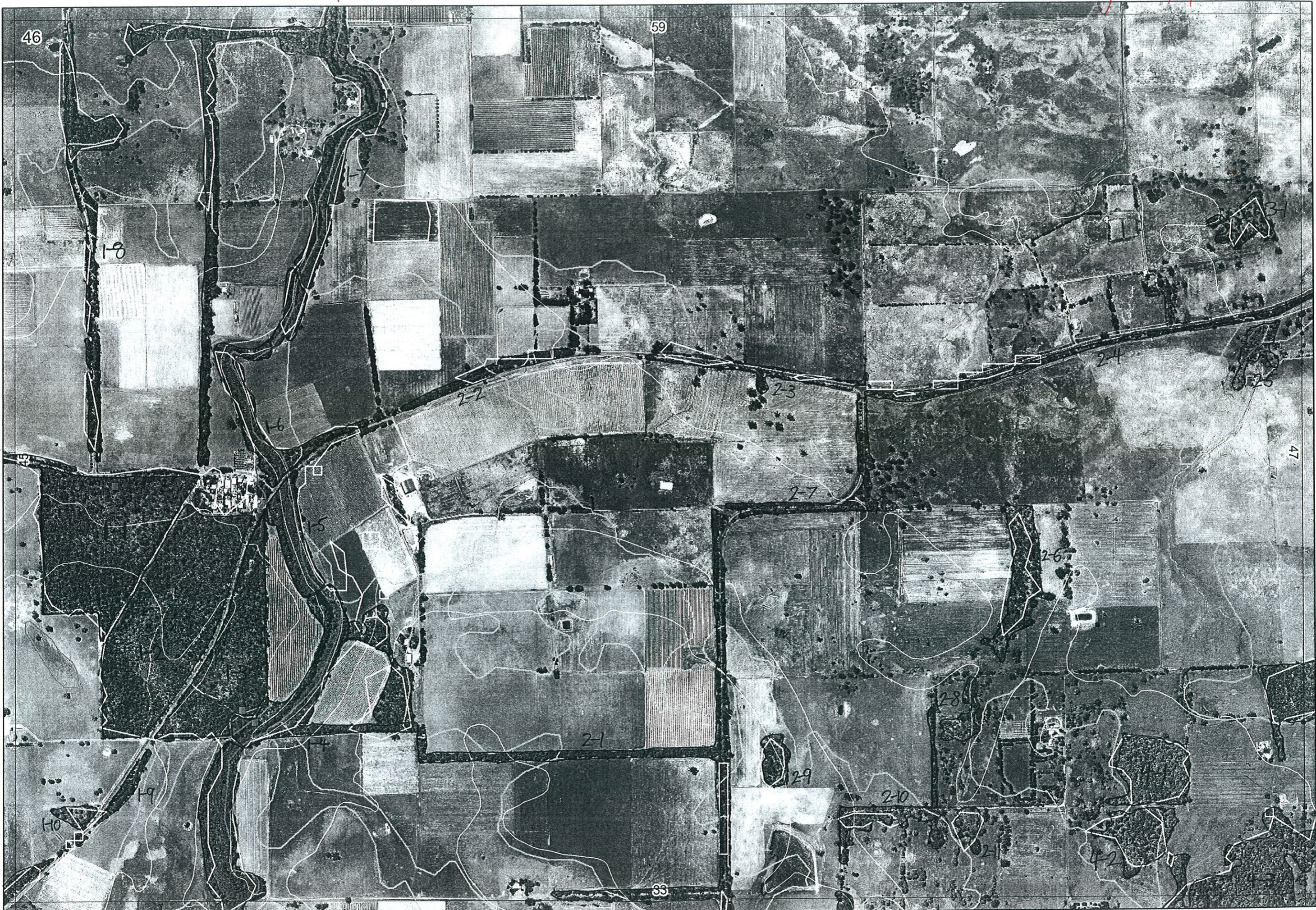
45/5-4

33/1-2

33/4-6

47/1-5

Ag 26/6/06



46

59

18

16

22

23

24

25

47

27

26

21

28

29

210

211

42

33

15/5-2

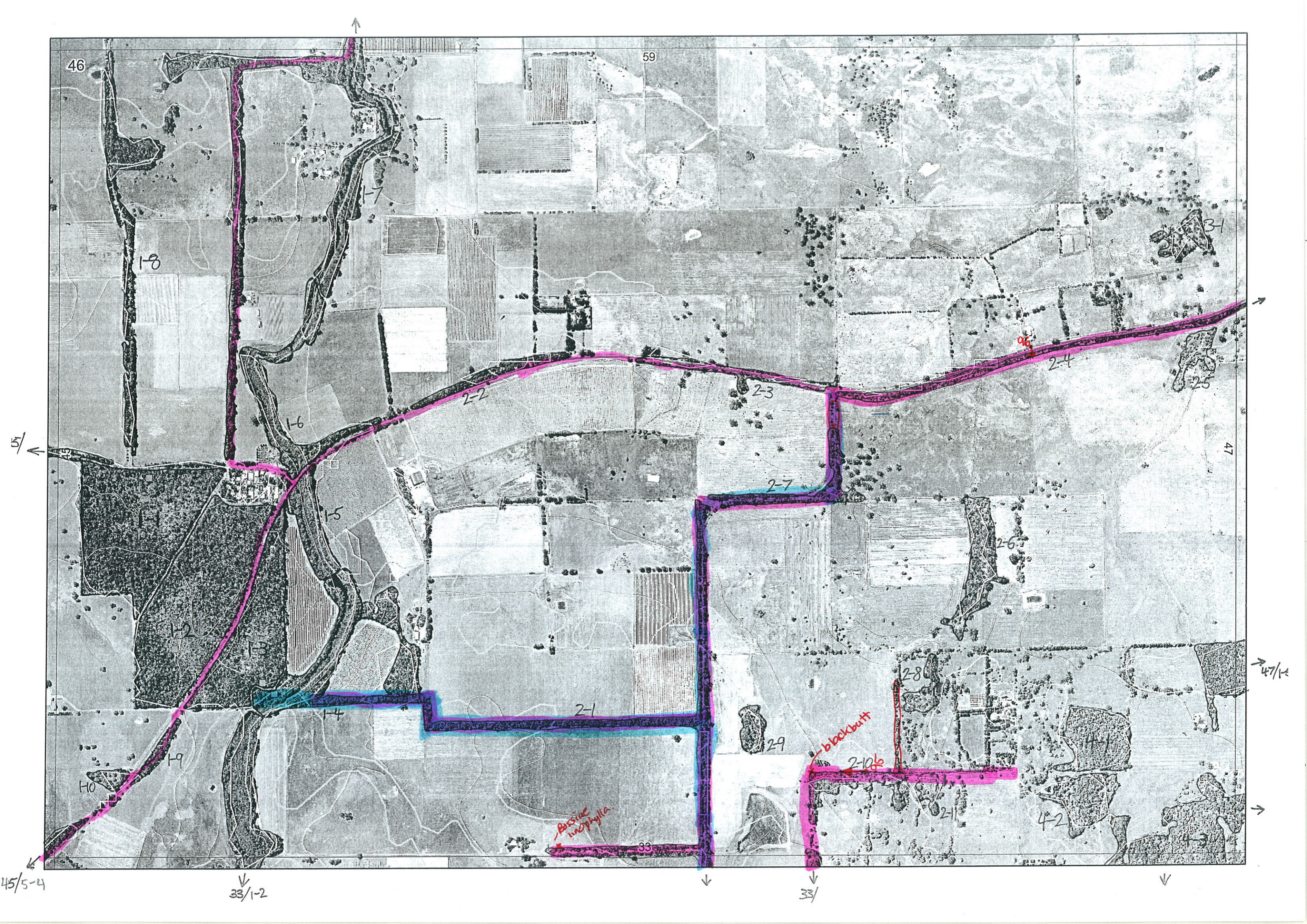
47/1-5

45/5-4

33/1-2

33/4-6





46

59

1-8

1-6

1-5

1-2

1-3

1-4

1-9

1-0

2-2

2-3

2-7

2-4

2-6

2-1

2-9

2-8

2-10b

2-1

Bassia inaequalis

33

33/

42

47

47/1-2

45/5-4

33/1-2

4

R E M	RE M2	XM AP	LIN TYPE	L I N E A R	M L U	U N I T S	U P L A N D ?	W E T L A N D ?	V I S I T ?	DETAIL/ Area Name	VEG CON	Field date 200_	OBS From	YNOTASS	D E T V I S R E Q D	COMMENTS	VEG STRU CTUR E DENS	FCT	DOMINANTS		
																			1	2	3
X1	1	-	-	-	P	2	Y	Y	N	Carburup Res. 1996 WFS BSN reservoir	E	1996	-	-	N	TEC, SCP plot signif flora	F	1b	Eucal	Eucmar	Agofle
																	W	4	Kunmic	Perell	Regoil
X1	2	-	-	-	P	3	Y	Y	N	"	E	1996	-	-	N	TEC, SCP plot, ORF signif flora	F	1b	Eucal	Eucmar	Agofle
																	W	4	Kunmic	Perell	Regoil
																	W	21b	Banatt	Allfra	Agofle
X1	3	-	-	-	P	1	Y	-	N	"	E	1996	-	-	N	TEC, SCP plot, ORF signif flora	F	1b	Eucal	Eucmar	Agofle
X1	4	-	channel	B	P	2	Y	Y	N	"	E	1996	-	-	N	TEC, SCP plot, signif flora	F	1b	Eucal	Eucmar	Agofle
																	W	River	Eucpat	Eucal	Agolin
X1	5	-	channel	Y	P	1	-	Y	N	Carburup River Action plan 2000	E	2000	-	-	N	B. lixophyllo, Euc. veldii, Crad diversifolia M. dilatata, Toxicis grossa, Tyrobaetes glaucosum	W	River	Eucal	Agofle	Agolin
X1	6	-	channel	Y	P	2	Y	Y	N	"	E	2000	-	-	N	peppy not always present in community	W	River	Eucal	Agofle	Agolin
											D	2005	E	-	N	understorey cleared/modified.	F	-	Eucal	Agoflex	
X1	7	Y	channel road	B	P	2	Y	Y	Y			21/6/06	edge			Parsoonia longifolia	F		Agoflex	Eucal	
											G	21/6	edge			Mis dil, Trifolium flavi lep. eff	F		Eucal	Eucpat	Agoflex
X1	8	-	road	B	P	2	Y	-			D-CD	21/6	distance				F		Eucal	Agoflex	
X1	9	-	road	Y	P	1	Y	-			D-G	21/6	edge				F		Eucal	Eucmar	Allfra
X1	10	-	-	-	Y	1	Y	-			D	21/6	edge				F		Agoflex	Eucal	
X2	1	Y	road	Y	P	3	Y	-			D	24/5	edge			Lonicera caerulea Eucna bushy, Boerhaavia hirtella Per. Sonchus oleraceus	F		Eucal	Agofle	
																	F		Agofle		
Summary/General Comments																F		Eucal			

2

Map Sheet Number 46

Pre Field Recorder(s) NW1

Field Recorder(s)

Swan Bioplan Vegetation Mapping Data

R E M	RE M2	XM AP	LIN TYPE	L I N E A R	M L U	U N I T S	U P L A N D ?	W E T L A N D ?	V I S I T ?	DETAIL/ Area Name	VEG CON	Field date 200_	OBS From	YNOTASS	D E T V I S R E O D	COMMENTS	VEG STRUC/ DENS	FCT	DOMINANTS		
																			1	2	3
X2	2	-	road	Y	P	1	Y	-			D	21/6	E				F		Eucal	Euc mar	
X2	3	-	road	Y	P	2	-	Y			D	21/6	E				F		① Eucrad	① Mel rhaps	② Euc oal
X2	4	Y	road	Y	P	2	Y	Y			D-D	24/5	E		N	Hebeveria / Procraspis caerata	F		Eucal	Agafle	
X2	5	-	-	-	P	1	-	Y			D-D	24/5	dist		N		W		Mel rhaps		
X2	6	-	-	-	P	2	-	Y			D	24/5	dist		N		F		Eucal		
X2	7	-	road	Y	P	1	Y	-			D	24/5	E		N		F		Euc rad	Mel rhaps	
X2	8	-	-	-	P	1	Y	-			D	24/5	dist		N		F		Euc rad	Mel rhaps	
X2	9	-	-	-	P	1	Y	-			D-D	24/5	dist		N		F		Eucal	Agafle	
X2	10	-	-	-	P	1	Y	-			D	24/5	E		N	Blackbutt	F		① Agafle	Euc oal	③ Curvul Mel rhaps
X2	11	-	-	-	P	1	-	Y			D	24/5	E		N		F		Mel rhaps	Euc rad	
X3	1	-	-	-	P	1	-	Y			D-D	24/5	dist		N		W		Euc rad	Agafle	
X4	3	-	-	-	P	1	Y	-			D	24/5	dercal		N	no access - goparco	F		Mel rhaps	Euc rad	Euc oal
X4	2	-	-	-	P	1	Y	Y			D	24/5	dist		N	Scalona Agafle + Eucal	F		Eucrad	Mel rhaps	
X4	1	Y	-	-	P	2	Y	Y		some on 4-2	D	24/5	dist		N		F				

Summary/General Comments