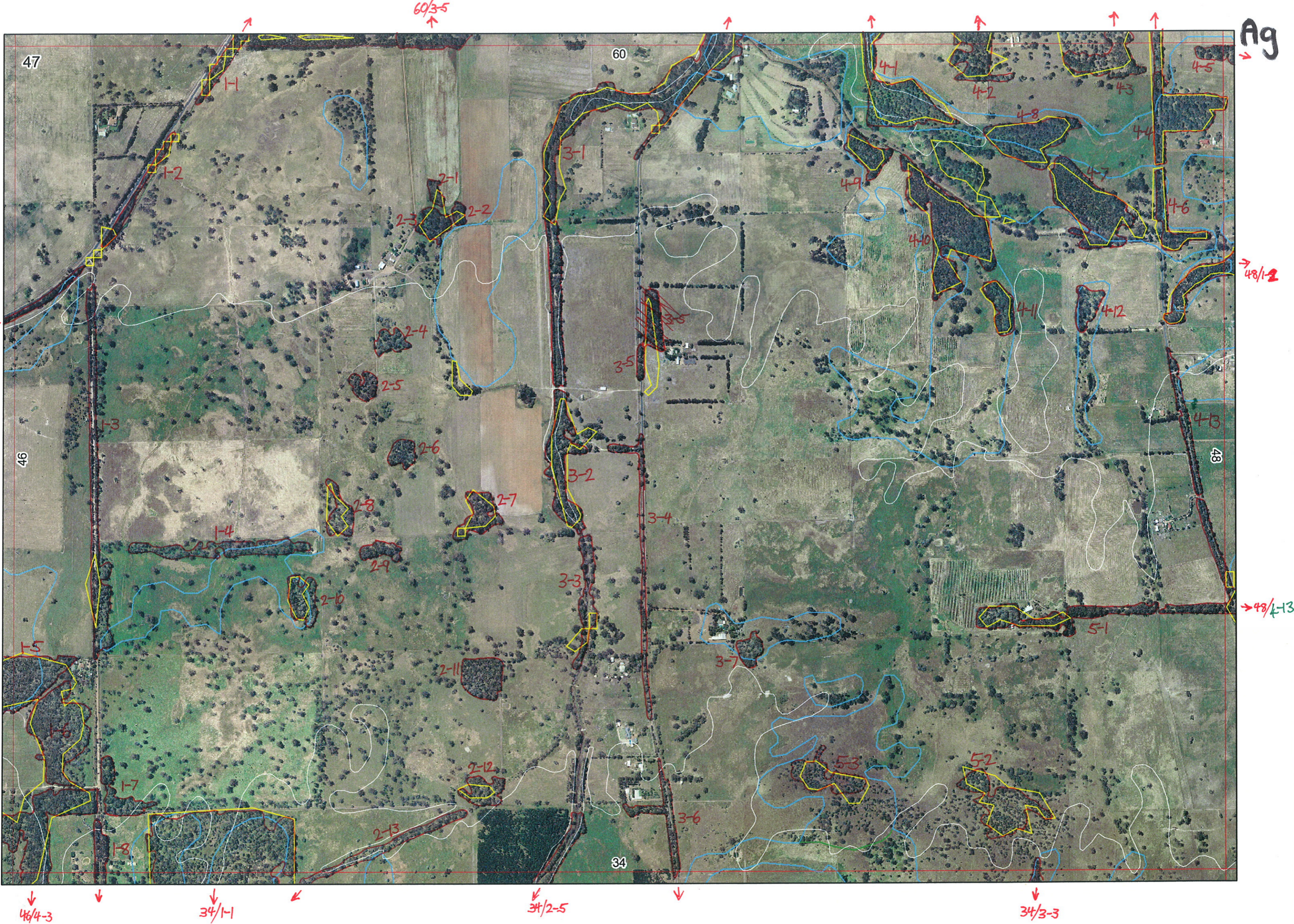


Ag



60/3-5

Ag 26/6/06



47

60

41

45

46

48

45

43

← 6/2-4

→ 48/1-2

→ 48/

← 6/4-3

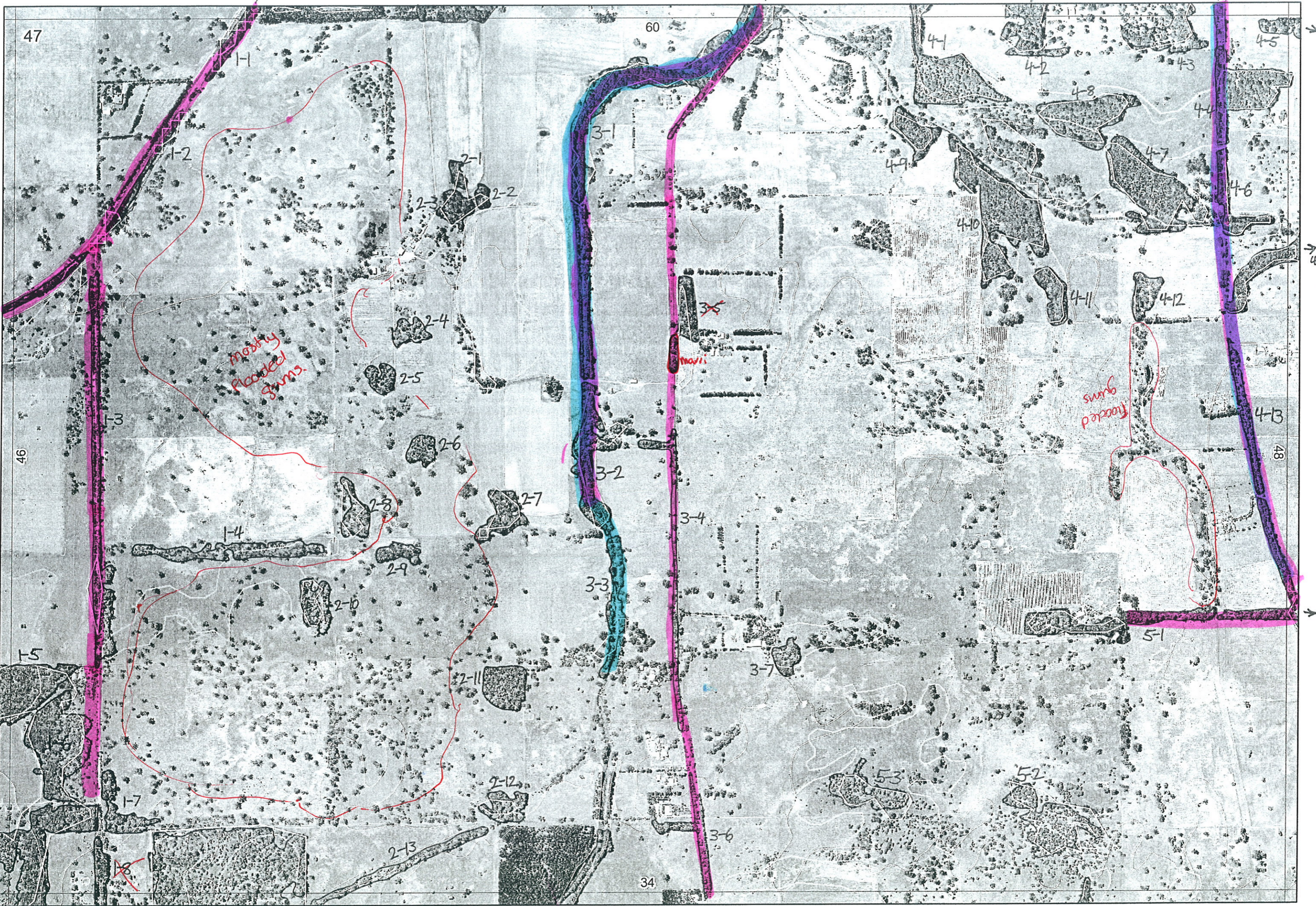
↓ 46/4-3

↓ 34/1-1

↓ 34/2-5

↓ 34/3-3

60/3-5



6/2-4

mostly flooded gums.

swamp flooded gums.

MARI

6/4-3

plantings?

46/4-3

34/1-1

34/2-5

34/3-3

48/1-2

48/

1

Map Sheet Number 47

Pre Field Recorder(s) ACW

Field Recorder(s)

Swan Bioplan Vegetation Mapping Data

MMF-24/15

R E M	RE M2	XM AP	LIN TYPE	L I N E A R	M L U	U N I T S	U P L A N D ?	W E T L A N D ?	V I S I T ?	DETAIL/ Area Name	VEG CON	Field date	OBS From	YNOTASS	D E T V I S R E Q D	COMMENTS	VEG STRU C/DENS	FCT	DOMINANTS		
																			1	2	3
X1	1	Y	road	Y	P	1	Y	-		5.3	D-CD	24/5	E				F		Eucal	Agofle	
X1	2	-	road	Y	P	2	Y	-		5.3	D-CD	24/5	E		N		F		Eucal		
X1	3	-	road	Y	P	1	Y	-		5.7	CD-D	24/5	E		N	Mel.vim scattered	F		Eucal	Agofle	
X1	4	-	fence	Y	P	1	Y	-		6	CD	24/5	dist				W		Eucal	Eucal	
X1	5	Y	-	-	P	1	Y	-		5	D	24/5	dist				F		Eucal	Agofle	Eucal
X1	6	-	-	-	P	1	Y	-		5.3	D to CD	24/5	dist		N		F		Eucal	Mel rhaps	
X1	7	-	-	-	P	1	Y	-		5.3	CD to D	24/5	E		N		F		Eucal	Agofle	
X1	8	Y	road	Y	P	1	Y	-		mostly plantings?	-	dist					F		Eucal		
X2	1	-	-	-	P	1	Y	-		5.3	D-CD		airial			no access - gap area	F		Eucal		
X2	2	-	-	-		1	Y	-		5.3	D-CD		airial				F		Eucal		
X2	3	-	-	-		1	Y	-		5.3	D-CD		airial	AW			F		Eucal		
X2	4	-	-	-		1	Y	-		5.3	D-CD	24/5	airial		N		F		Eucal	Agofle	
X2	5	-	-	-		1	Y	-		5.3	D-CD	24/5	airial		W		F		Eucal		
X2	6	-	-	-		1	Y	-		5.3	D-CD	24/5	airial		N		F		Eucal		
X2	7	-	-	-		1	Y	-		5.3	D-CD	24/5	airial		N		F		Eucal		
X2	8	-	-	-		1	Y	-		5.7	CD-D	24/5	dist		N		F		Eucal		
X2	9	-	-	-		1	Y	-		5.7	CD-D		airial	AW			F		Eucal		
X2	10	-	-	-	P	1	Y	-		5.7	D-D	24/5	dist		N		F		Agofle		

Summary/General Comments

2

23/6 AN, EH, DC

Map Sheet Number 47

Pre Field Recorder(s) AW

Field Recorder(s)

Swan Bioplan Vegetation Mapping Data

R E M	RE M2	XM AP	LIN TYPE	L I N E A R	M L U	U N I T S	U P L A N D ?	W E T L A N D ?	V I S I T ?	DETAIL/ Area Name	VEG CON	Field date	OBS From	YNOTASS	D E T V I S R E O D	COMMENTS	VEG STRU C/D ENS	FCT	DOMINANTS		
																			1	2	3
2	11	-	-	-	P	1	Y	-			CD <sup>h</sup> D	24/5	dist				F		Eucal		
2	12	-	-	-	P	1	Y	-			CD-CB		serial	HW		no access - gap area	F		Eucal	Agofle	
2	13	Y	channel	Y	P	1	Y	-			CD-CB		serial	HW		no access - gap area	F		Eucal		
3	1	Y	channel	Y	P	2	Y	Y			D	24/5	E		N		F		Eucal	Agofle	
																			Eucal		
3	2	-	channel	Y	P	1	Y	-			D	24/5	dist		N		F		Eucal	Agofle	
3	3	-	channel	Y	P	1	-	Y			CD <sup>h</sup> D	24/5					W		Eucal	Eucal	
3	4	-	road	Y	P	2	Y	-			CD <sup>h</sup> D	24/5			N		F		Eucal		
3	5	-	-	-	P	1	Y	-		plantings	CD-D	24/5	E		W		F		Eucal		
3	6	Y	road	Y	P	1	Y	-			D	24/5	E		N		F		Eucal		
3	7	-	-	-	P	1					CD <sup>h</sup> D	24/5	dist		N		F		Eucal	Agofle	
4	1	Y	-	-	P	2	Y	Y			E	23/6	dist				F		Eucal	Agofle	
																			Eucal	Melina	
4	2	Y	-	-	P	1	Y	-			CD-D	24/5	E		N	Agofle Broken	F		Eucal		
4	3	Y	-	-	P	1					CD-D	24/5	E		N		F		Agofle	Eucal	Eucal
4	4	Y	road	B	P	2					CD-D	24/5	E		N		F		Eucal		
											CD-D	24/5	E		N		F		Melina	Eucal	
4	5	Y	-	-	P	1	Y	-			S7	23/6	dist				F		Eucal		

Summary/General Comments

3

Map Sheet Number 47

Pre Field Recorder(s) AW

Field Recorder(s)

Swan Bioplau Vegetation Mapping Data

R E M	RE M2	XM AP	LIN TYPE	L I N E A R	M L U	U N I T S	U P L A N D ?	W E T L A N D ?	V I S I T ?	DETAIL/ Area Name	VEG CON	Field date	OBS From	YNOTASS	D E T V I S R E Q D	COMMENTS	VEG STRU CTURE DENS	FCT	DOMINANTS		
																			1	2	3
46	-	road	Y	P	1	Y	-				CD-D	24/5	E		N		F		Eucal		
47	-	-	-	P	1	Y	-				CD-D	24/5	dist		N		F		Eucal Euc rub		
48	-	-	-	P	2	Y	-				CD-D	24/5	dist				F		Eucal		
49	-	-	-	P	1	Y	-				CD-D	24/5	aerial		N		F		Eucal		
410	-	-	-	P	2	Y	-				CD-D	24/5	dist		N		F		Euc rub Euc cal Euc rub		
411	-	-	-	P	1	-	Y				CD-D	24/5	aerial		N		F		Euc rub		
412	-	-	-	P	1	-	Y				CD-D	24/5	dist		N		F		Euc rub		
413	-	road	Y	P	1	Y	-				D	24/5	E		N	Kingia	F		Eucal	Euc rub	
51	-	road	Y	P	2	Y					CD-D	24/5	E		N	Hakea varia	F		Eucal Euc rub	Mel rhesph	
52	-	-	-	P	1	-	Y				CD-D	24/5	dist		N		W		Euc rub	Mel rhesph	
53	-	-	-	P	1	-	Y				CD-D	24/5	dist		N		W		Mel rhesph	Euc rub	

Summary/General Comments