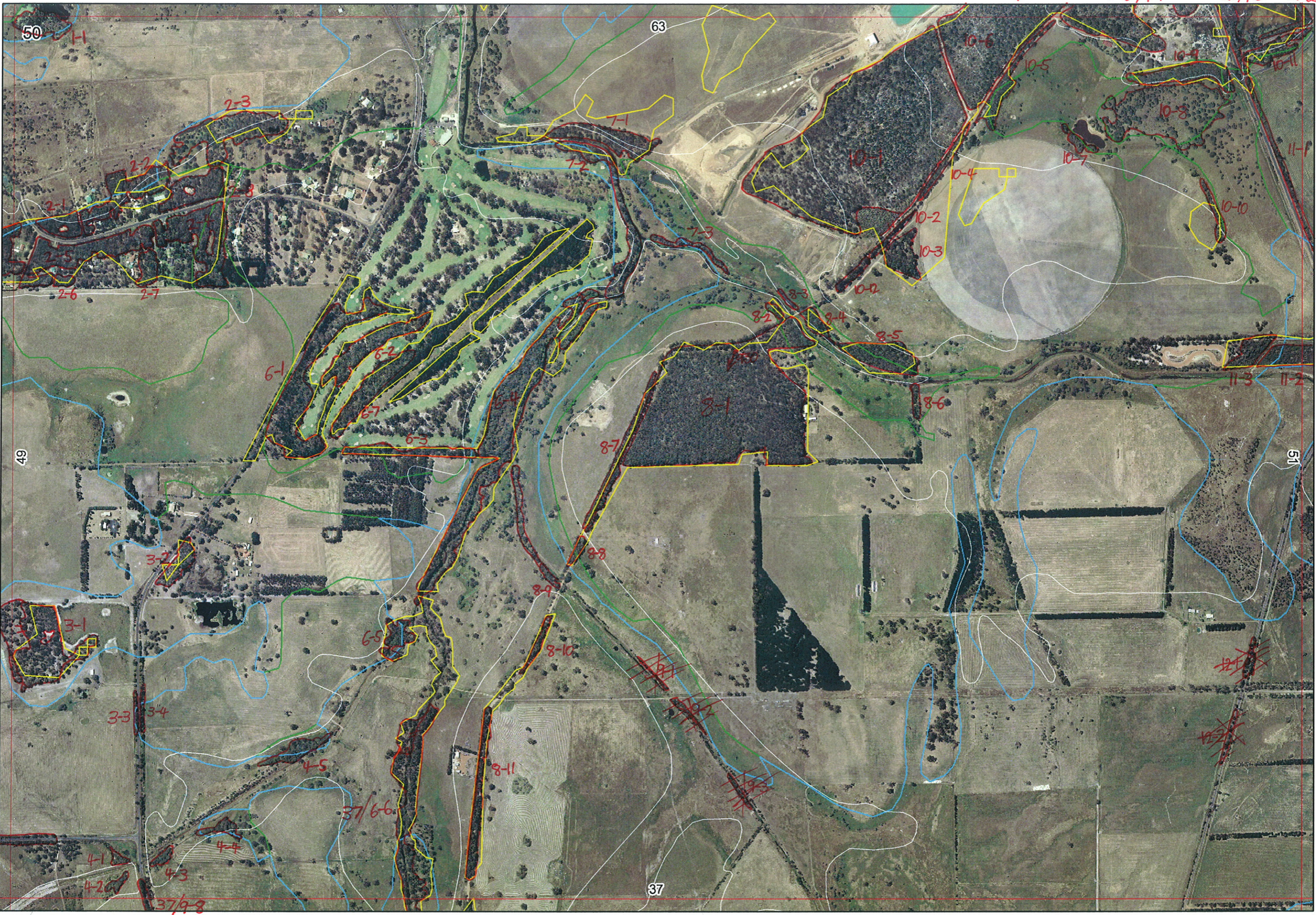


Ag



49/23
←

↑ 63/9-7 ↑ 63/9-5 ↖ 63/9-6

49/5-2
←

↓

↓ 37/6-6

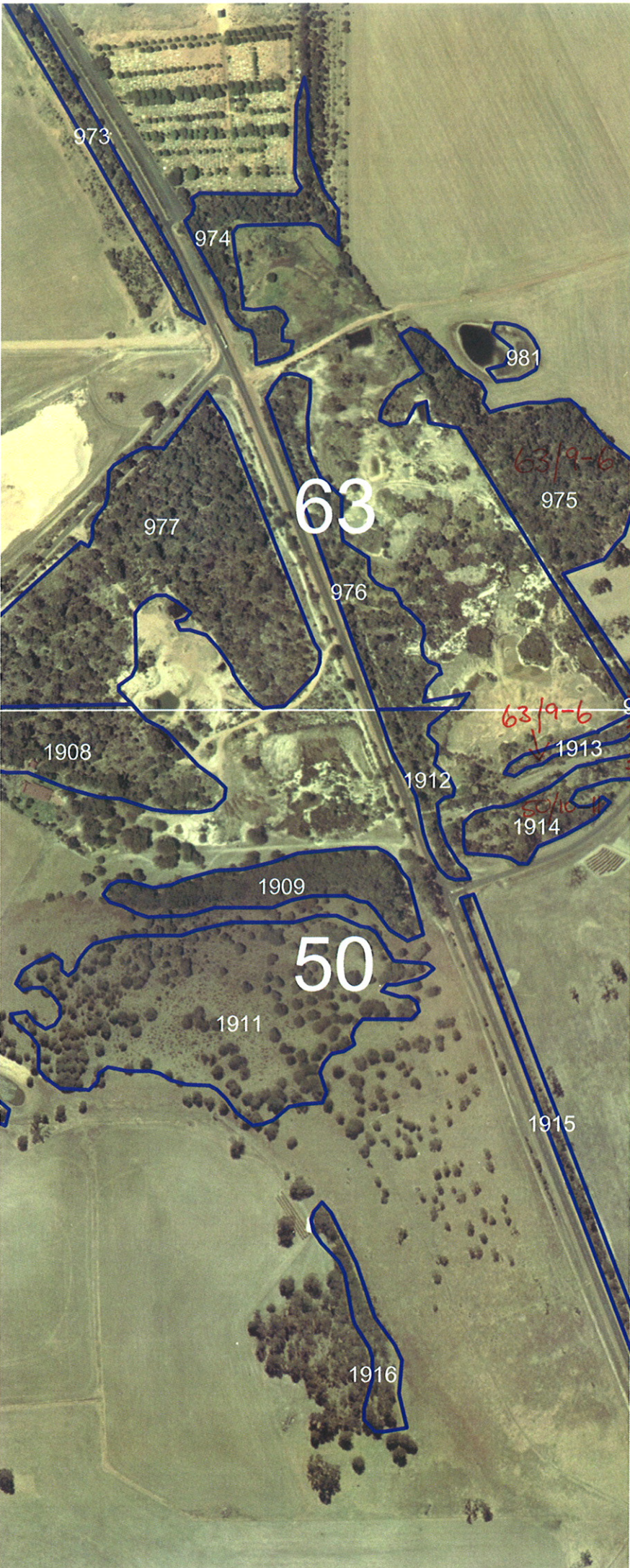
63

50

49

51

37



Ag 14/8/06

↑ 63/9-7 ↖ 63/9-5 ↗ 63/9-6



49/23
←

49/5-2
←

↓
37/9-8

↓
37/6-6

50

63

51

37

2-3

2-6

2-7

49

6-1

6-2

6-3

3-2

3-3

3-4

4-1

4-2

4-3

37/6-6

6-5

8-11

8-10

8-9

8-7

8-2

8-3

8-4

8-5

8-6

10-2

10-3

10-4

10-7

10-5

10-8

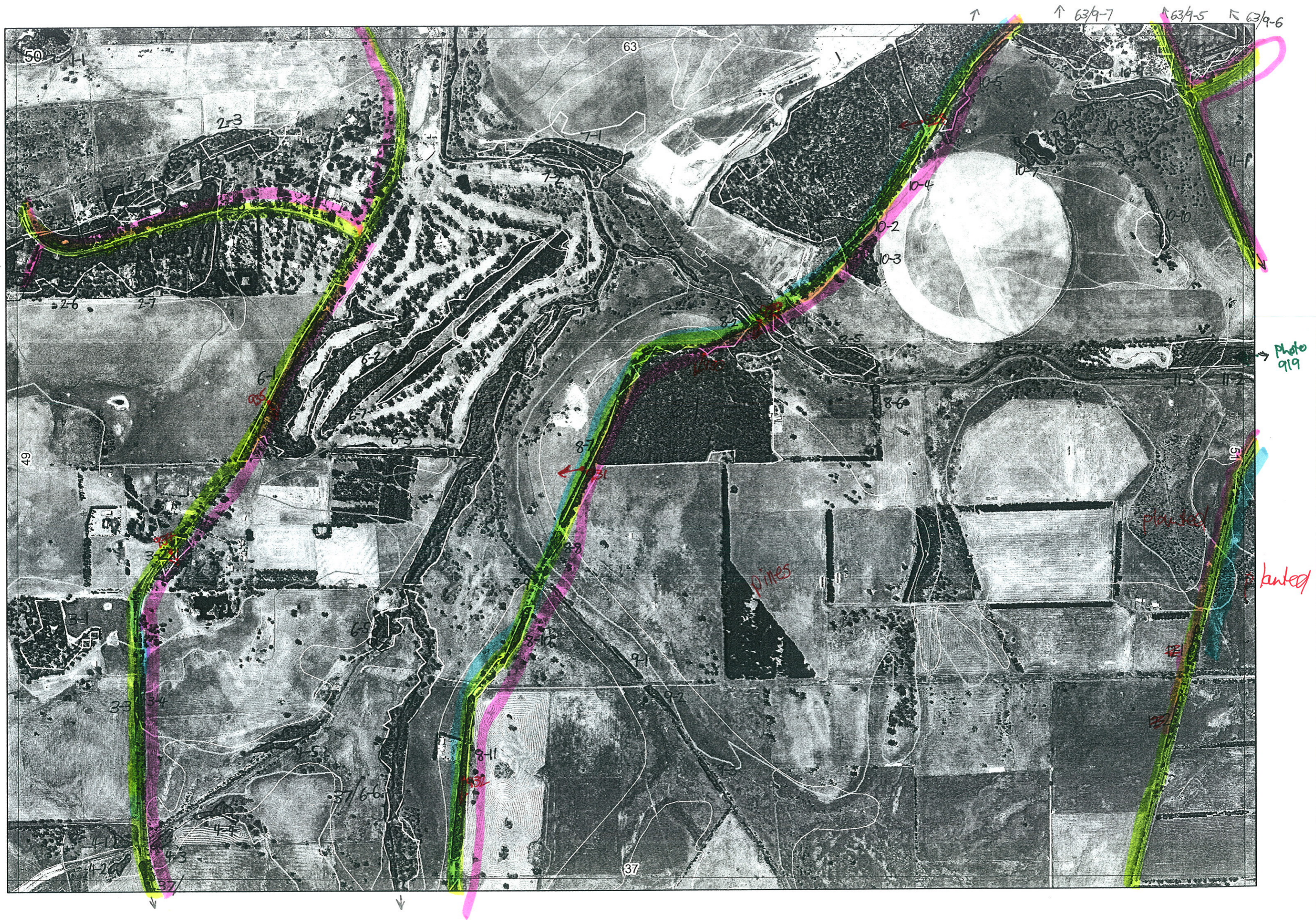
10-10

10-11

11-1

12-1

12-2



2

Map Sheet Number 50

Pre Field Recorder(s)

A. V. Walsh

Field Recorder(s)

Swan Bioplan Vegetation Mapping Data

R E M	R E M 2	X M A P	L I N E A R	L I N E A R	M L U	U N I T S	U P L A N D ?	W E T L A N D ?	V I S I T ?	D E T A I L A r e a N a m e	V E G C O N	F i e l d d a t e 2 0 0	O B S F r o m	Y N O T A S S	D E T E R M I N E D	C O M M E N T S	V E G S T R U C T U R E D E N S	F C T	D O M I N A N T S		
																			1	2	3
X6	1	-	-	-	P	2	Y	-		BSV golf club	D	12/4	edge		N	fine plantings within	F	na	Marrri	Jarraah	Kincaus
X6	2	-	-	-	P	1	Y	-		"	G	30/4	edge		Y	some peppi	F	2/6	Jarraah	Marrri	Banatt
X6	3	-	-	-	P	1	Y	-		"	CD	16/7	edge		N	scattered Marrri + marrri regen within plantings, 3 WTB cookies, Dutchop. bird	F	-	Eucal	plantings	
X6	4	-	channel	Y	P	1	-	Y			D-G	16/7	edge			WRP grazing, part spp. list	F	-	Eucrad	Agelle	Melrho
X6	5	-	-	-	P	1	-	Y			D	12/6	dist				W	-	Eucrad	Melrho	
X6	7	-	-	-	P	1	Y	-		BSV golf club	G-D	30/4	edge			partial spp list	F	2/6	Jarraah	Marrri	Battermate
X7	1	-	-	-	P	1	-	Y		T	D	16/7	dist				F	-	Eucal		
X7	2	-	-	-	P	1	-	Y		BSV golf club	D	16/7	edge			Melrho becomes less to the Sth. WRP grazing + drey	F	-	Eucradis	Peppi	Melrho
X7	3	-	channel	Y	P	1	-	Y			CD-D	16/7	aerial				W	-	Eucradis	Agelle	
X8	1	-	-	-	P	2	Y	Y		BSV flood basin flood 14/05 (CPM hascopy)	D-G	12/6	edge		N		W	-	Peppi	Eucrad	Melrho
											W W E		edge		N		W	2/6	Eucal	Eucrad	Peppi
															N		F	1/6	Eucal	Eucrad	Peppi
X8	2	-	-	-	P	1	-	Y			CD	12/4	edge		N		W	-	Eucradis	Peppi	
X8	3	-	channel	Y	P	1	-	Y			CD-D	12/4	edge				W	-	Eucradis	Melrho	
X8	4	-	-	-	P	1	-	Y			D	12/4	edge				W	-	Eucradis	Melrho	Melrho
X8	6	-	fence	Y	P	1	-	Y			D	AW	aerial				W	-	Eucradis	Melrho	Peppi
X8	5	-	-	-	P	1	-	Y			D-G	AW	aerial				F	-	Eucradis	Melrho	Peppi
X8	7	-	road	Y	P	1	Y	-			CD-D	AW	edge		N	no v. strong	F	-	Marrri		

935
photo 931
from det

929
930

Summary/General Comments

R E M	RE M2	XM AP	LIN TYPE	L I N E A R	M L U	U N I T S	U P L A N D ?	W E T L A N D ?	V I S I T ?	DETAIL/ Area Name	VEG CON	Field date 200_	OBS From	YNOTASS	D E T V I S I O N	COMMENTS	VEG STRU C/D ENS	FCT	DOMINANTS		
																			1	2	3
x1	1	✓	-	-	S	1	-	Y			CD-D	12	Dist		N		W	-	Melrha		
x2	1	-	-	-	S	1	N	Y			CD-D	12/4	Edge		N		W		Peppi	Melpro	
x2	2	-	-	-	S	2	N	Y		has some (Excl unit) of 2-3	CD-D	12	E		N	small patch Intact around hedger, modified	W		Peppi	Melpro	
x2	3	-	-	-	S	1	N	Y			D	12	dist			+ M. latifolia as occur.	W	-	Melvim	Melure	Melrha
x2	4	-	-	-	P	1	Y	-			CD-D	12	E		N		W	-	Marri	Peppi	
x2	5	-	-	-	P	1	Y	-			VG					1/2 parkland cleared	W	21b	Banatt	Marri	Peppi
x2	6	-	-	-	P	1	Y	-								as 2-5 aerial					
x2	7	-	-	-	P	1	Y	-			CD-D		aerial			parkland cleared	W		Marri	Peppi	
x2	8	-	-	-	P	1	Y	-			CD-D	12	E				W	-	Marri	Peppi	
x3	1	-	-	-	P	2	Y	-			CD D-G	12	E D		N		W	21b	Peppi Banatt	Peppi	Marri
x3	2	-	-	-	P	1	Y	-			G-D	12	E		N		W	21b	Peppi	Peppi	934
x3	3	-	road	Y	P	1	Y	-			D	12	E		N		F	-	Marri	Peppi	Kinross
x3	4	-	road	Y	P	1	Y	-			D	12	E		N		F	-	Marri	Peppi	Kinross
x4	1	-	-	-	P	1	-	Y			CD-D	12/4	edge		N		W	-	Melvim	Hobvill	
x4	2	-	-	-	P	1	-	Y			CD-D	12/4	edge		N		W	-	Melrha		
x4	3	-	-	-	P	1	-	Y			CD-D	12/4	edge		N		W	-	Melrha		
x4	4	-	-	-	P	1	-	Y			CD-D	12/4	dist		N		W	-	Melrha	Eucrad	
x4	5	-	-	-	P	1	-	Y			CD-D	12/4	dist		N		W	-	Melrha	Eucrad	

Summary/General Comments

R E M	R E M 2	X M A P	L I N E T Y P E	L I N E A R	M L U	U N I T S	U P L A N D ?	W E T L A N D ?	V I S I T ?	D E T A I L A r e a N a m e	V E G C O N	F i e l d d a t e 2 0 0	O B S F r o m	Y N O T A S S	D E T E R M I N E D	C O M M E N T S	V E G S T R U C T U R E D E N S	F C T	D O M I N A N T S		
																			1	2	3
X10	10	-	channel	Y	P	1	-	Y			CO	11/4	dist	-			W	-	Peppi		
X11	1	Y	road	Y	P	3	Y	Y	Y	Vasse Hwy	D	11/4	edge	-	N	Kunzea microcarpa, Manri Kakeo SWC Xanth. pici	W	4?2	Mel uncin	King aust	Cal lat
										Vasse Hwy	D-G	11/4	edge	-		mel vim, Mel latentia (signif) edge on Vasse Hwy degraded - Watsonia	W	1b 7	Manri Mel uncin	Allo humi E. m. Junc	Hak varia
X11	2	Y	-	-	P	1	-	Y	Y		VS	11/4	within		Y	URE Vert plum var vossensis URE - Vert plum var vossensis	HS	10a	Kunmic	Melunc	Hakmar
X11	3	-	-	-	P	2	Y	Y			G-VG	2/3	edge		N			9-?	Melpre	Lepton	Banjan
																		21b	Agoffe	Banatt	Muyflo
X12	1	-	road	Y	P	1					CO	11/4	edge			plantings					
X12	2	-	road	Y	P	1					CO	11/4	edge			plantings					
X10	11	Y	road	Y	P	1	Y		Y	Airport access	CO-D	11/4	edge	-			F	21b	Manri	Peppi	Ban att
X10	12		road	Y	P	1	Y	-	Y		D	12/4	edge		N	no u/sburg	F	-	Manri	Peppi	jarrell

photo 919

Summary/General Comments

cross-over: 63/9-7, 63/9-6
63/9-5, 37/6-6

R E M	R E M 2	X M A P	L I N E T Y P E	L I N E A R	M L U	U N I T S	U P L A N D ?	W E T L A N D ?	V I S I T ?	D E T A I L A r e a N a m e	V E G C O N	F i e l d d a t e 200_	O B S F r o m	Y N O T A S S	D E T V I S R E O D	C O M M E N T S	V E G S T R U C T U R E D E N S	F C T	D O M I N A N T S			
																			1	2	3	
X8	9	-	road	Y	P	1	Y	-			cb ed	12/4	edge				W	-	marri	Eucrad	Meloha	
X8	8	-	channel	Y	P	1	Y	-								same as 8-7			Eucal			
X8	10	-	road	Y	P	1	Y	-			cd-0	12/4	edge				F	-	marri	Peppi		
X8	11	-	road	Y	P	1	Y	-			cd-0	12/4	edge			channel in report	F	-	marri	Janan	Peppi	932
X9	1	-	channel	Y	P	1	-	Y														
X9	2	-	channel	Y	P	1	-	Y														
X9	3	-	channel	Y	P	1	-	Y														
X10	1	-	-	-	P	3	Y	Y	N	Linkag rd Dulka report (plots + spp list)	2	Sept 06	W			Dialium elasticum, Synophea hians A. semitrilobata, Jacksonia sparsa, (+ significant spp.)	W DLH F	21b 4 1b	Banatt Perell Eucmar	Banili Kunnie Eucal	Nuytlo Kungla Xyloc	938
X10	2	-	road	Y	P	1	Y	-			10	12/4	edge	N			F	21b	Eucmar	Eucal	Peppi	
X10	3	-	-	-	P	1	Y	-			cd-0	12/4	dist	N		no u/story	W	21b	Banatt	Peppi	Eucal	
X10	4	-	road	Y	P	1	Y	-			G	12/4	edge	N			W	21b	Peppi	Nuytlo	Eucal	
X10	5	-	road	B	P	2	Y	Y	Y		G	12/4	edge	N			W	21b	Eucal	Eucmar	Banatt	
X10	6	Y	-	-	P	3	Y	Y	N	continuation of Linkag rd Dulka report	2	Sept 06	W			continuation of units within rem 10-1						
X10	7	-	-	-	P	1	-	Y			D	11/4/06	acid	N			W		Meloha			
X10	8	-	-	-	P	1	-	Y			cd	11/4/06	edge						Meloha			
X10	9	-	-	-	P	1	Y	-			D	11/4/06	edge	-	-		F		Peppi	Marri		

Summary/General Comments