

63/9-6

Ag



51

64

64/9-9

50/11-1

5-1

5-2

F 50/11-2

4-1

1-1

52/1-11

1-2

4-2

1-3

52

1-4

2-3

3-1

3-2

1-5

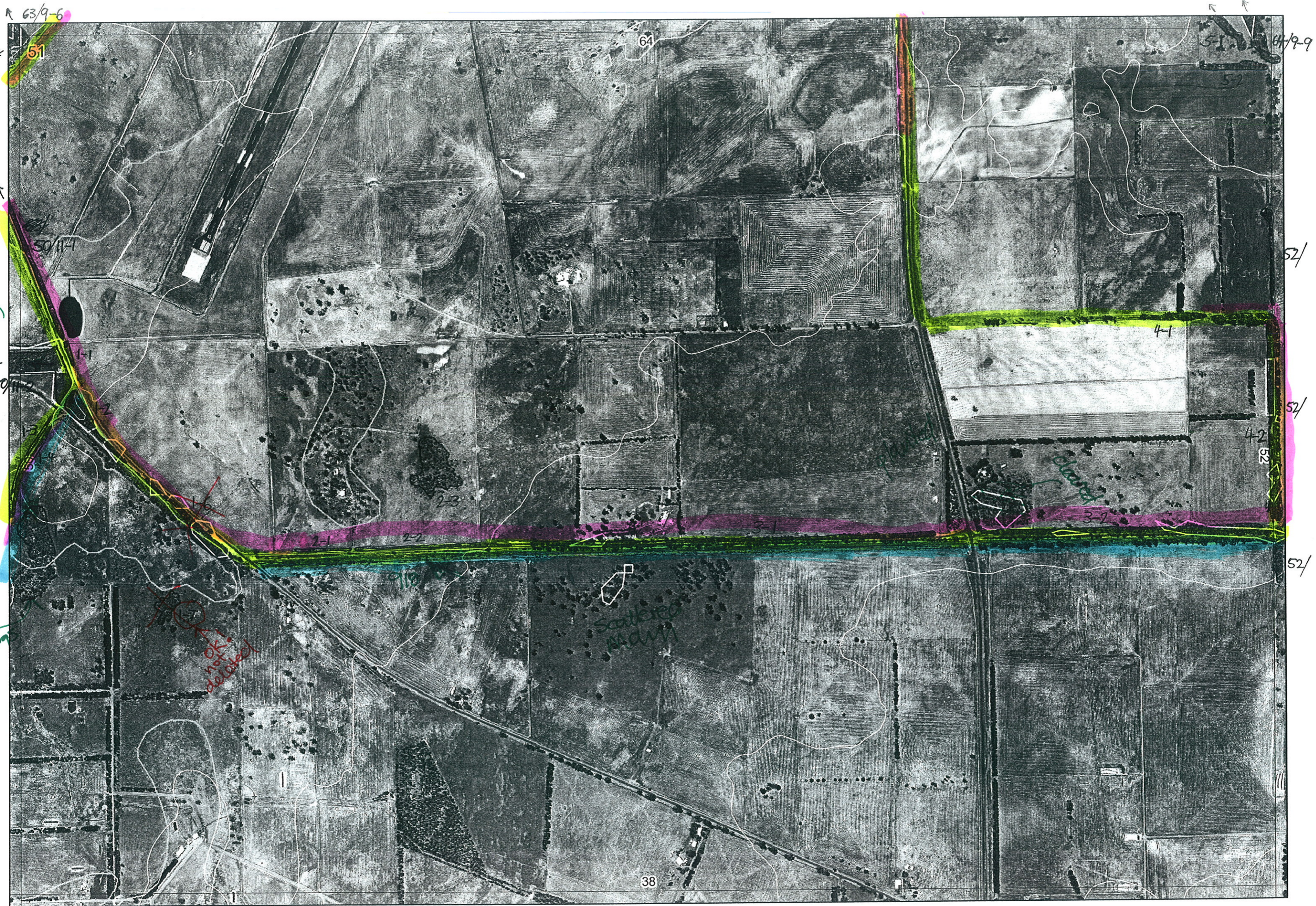
2-1

2-2

52/1-12

50/11-7

38



R 63/9-6

64

64/9-9

51

51

51

50/11-1

52/1

Photo 919
(looking W)

4-1

52/2

Photo 924

4-2

52/3

1-6

52

2-1

2-2

2-3

cleared

3-7

52/4

planting

OK!
not deleted

Scattered
PLOW

38

Photo 918

(pick up cart trash run) on map 50

R E M	R E M 2	X M A P	L I N E T Y P E	L I N E A R	M L U	U N I T S	U P L A N D ?	W E T L A N D ?	V I S I T ?	D E T A I L / Area Name	V E G C O N	F i e l d d a t e 200_	O B S F r o m	Y N O T A S S	D E T E R M I N E D	C O M M E N T S	V E G S T R U C T U R E / D E N S	F C T	D O M I N A N T S		
																			1	2	3
x1	1		road	y	P	1	-	Y	y	Vasse Hwy	G-D	11/4	edge	-			W	7-?	Meluncin	Hak van	Bam jun
x1	2		road	B	P	1	-	Y	y	Vasse Hwy	VG	11/4	edge	-	y	HE - Vert plumosa var. vassensis	S	10a	Kunzea microantha	Meluncin	Reg oil
x1	3	✓	road	y	P	1	-	Y			G	11/4	edge	-		Maka mang, Bam jun	W	7/10a	Jim jun	Meluncin	Hak van
x1	4	✓	road	y	P	1	-	Y			G	11/4	edge	-			W	7/10a	"	"	"
x1	5	✓			P	1	Y	-			D	11/4	dist	-			F	1b	Marri	Jawah	Xan prei
x1	6		road	y	P	1	Y	-			D			-		Pines			Marri		
x1	7				P	1	-	Y	y		CD-B	11/4	dist	-			F	-	Marri	Euc rud	
x2	1		road	y	P	1	-	Y	N	A.W spp list Wonnacup E rd head	4-3	11/4	edge	-		P3 - Grevillea brachystylis ssp brachy DIE - Vert plumosa var. vassensis	HS HS	10a	Kunzie	Anolae	Reg oil
x2	2		road	y	P	1	-	Y	N	"	4-3	11/4	edge	-			HS HS	10a	"	"	"
x2	3				P	1	-	Y			CD	1/4	dist	-		Jawah, Xan prei	F	-	Marri	Euc rud	
x3	1		road	y	P	1	Y	-	y	Wonnacup E rd	CD-3	11/4	edge	-			F	-	Marri	King aus	Kitayu
x3	2		road	y	P	1	Y	-	y	"	D-CD	11/4	edge	-			F	-	Marri	Xan prei	Kitayu
x4	1		road	y	P	1	Y	-	y		D	11/4	dist	-			F	-	Marri	Xan prei	
x5	1		channel	y	P	1	-	Y	y		CD-D	12/4	dist	-	N		W	-	Euc rudis	Marri	Melsho
x5	2		fence	y	P	1	Y	Y	y		CD		dist	-	N	stuffed - rubis, man	W	-	"	"	
x4	2		road	y	P	1	Y	-			D-CD	11/4	edge	-			F	-	Marri	Xan prei	Bam gra

Photo 924

Photo 918

Summary/General Comments

cross-over - 50/11-2 63/9-6
50/11-1 64/9-9