

R 65/3-6

Ag

52

65

53/1-1

2-1

4-1

7-1

53/2-1

4-2

4-3

4-4

1-1

1-2

4-5

5-1

5-2

5-3

51

1-3

1-4

1-5

5-3

4-6

53

8-1

~~1-10~~

6-1

6-2

4-7

8-2

1-6

3-1

1-2

1-7

1-8

1-9

4-8

8-3

6-3

3-2

8-4

1-10

3-3

3-4

3-5

4-9

8-5

→

3-4

3-5

8-6

8-7

39

8-8

↓

↓

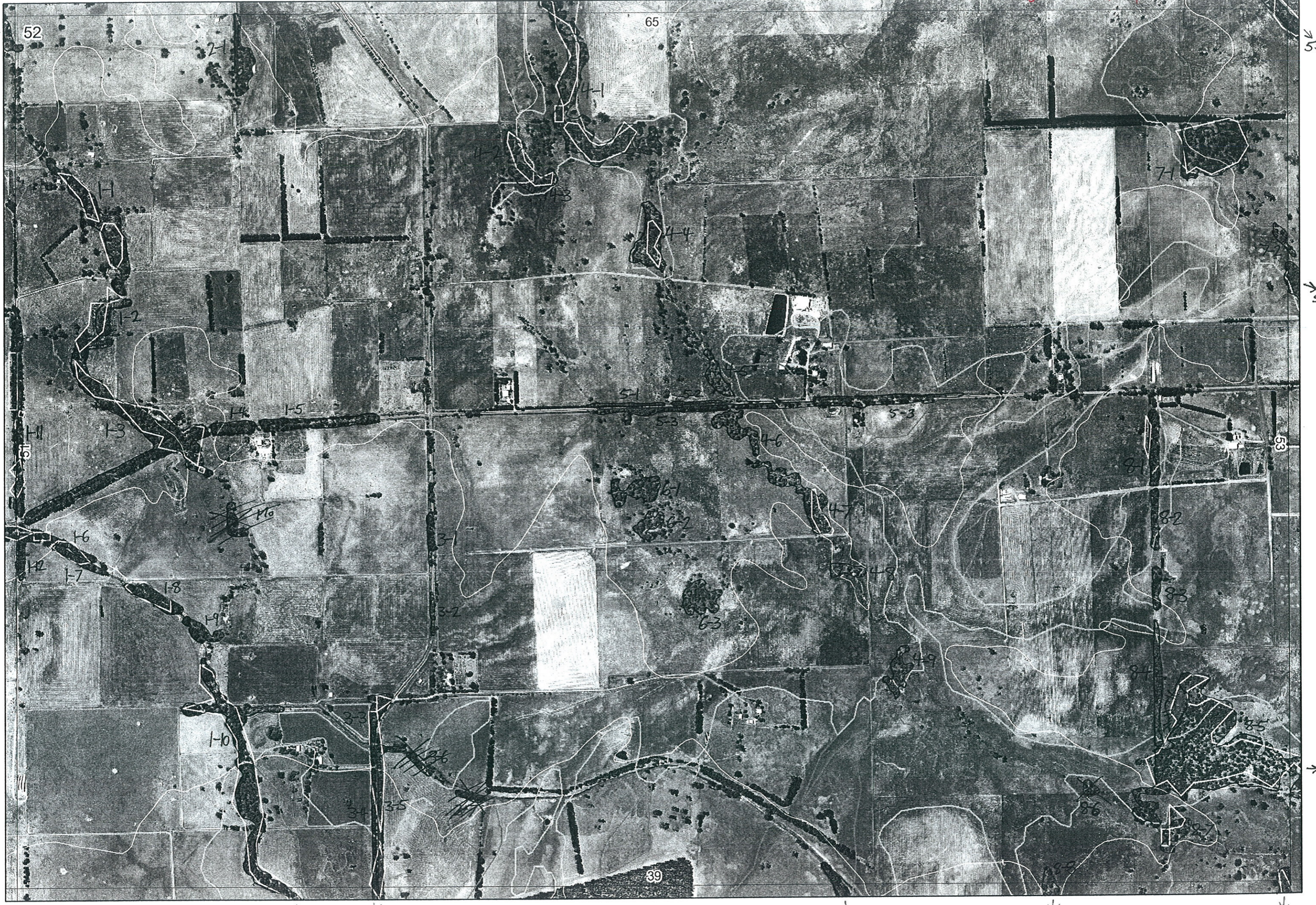
39/5-1

↓

39/10-1

Ag 14/8/06

65/3-6



52

65

2-1

4-1

53/1-1

7-1

53/2-1

1-2

4-4

51

1-4

1-5

5-1

5-2

5-3

53

1-3

4-6

8-1

1-6

1-6

6-1

4-5

8-2

1-2

1-7

6-3

4-8

8-3

1-8

1-9

3-2

4-9

8-4

1-10

3-4

3-5

39

8-6

8-7

↓

↓

↓

↓

→

39/5-1

39/10-1



R E M	RE M2	XM AP	LIN TYPE	L I N E A R	M L U	U N I T S	U P L A N D ?	W E T L A N D ?	V I S I T ?	DETAIL/ Area Name	VEG CON	Field date	OBS From	YNOTASS	D E T V I S R E Q D	COMMENTS	VEG STRU CTURE DENS	FCT	DOMINANTS		
																			1	2	3
x1	1	-	channel	Y	P	1	Y	-			CD-D	26/4	dist		N		F		Eucal	Agofle	
x1	2	-	channel	Y	P	1	Y	N			CD-D		axial		W		F		Eucal		
y1	3	-	channel + road	Y	P	2	Y	Y			CD-D	26/4	edge/ dist			White Blade Larkies, plantings with orig. drain	F		Eucal	Agofle	
											D-CD	26	edge		N		F	-	Eucal	Kingaus	Xenp10
x1	4	-	road	Y	P	1	Y	-			D-CD	26	trans edge		N	Eucpat, Low vertic	F		Eucal	Poppi	Euc patens
x1	5	-	road	Y	P	1	Y	occ W			D-CD	26	edge			Racpat, King aust Mel incana	F	-	Eucal	Eucpat	
x1	6	-	channel	Y	P	1	Y	-			CD-D	26/4	dist				F		Matti		
x1	7	-	channel	Y	P	1	Y	-			CD-D	"	dist				F		"		
x1	8	-	channel	Y	P	1	Y	-		diversion drain	CD-D	"	dist				F		"		
x1	9	-	channel	Y	P	1	Y	-			"	"	axial				F		"		
x1	10	Y	channel	Y	P	2	-	Y			CD-D	"	dist			old planting	F		MATTI		
x1											CD-D	"	dist				F		Agofle		
x1	11	Y	road	Y	P	1	Y	-	N		D-CD	1/4	edge		N		F	-	Matti	Xenpre	Rangio
x1	12	Y	road	Y	P	1	Y	-	N		D-CD	1/4	edge		N		F	-	Matti	Xenpre	Rangio
2	1	-	road	Y	P	1	Y	-	Y		5.3	7/7	dist				W		Eucal ryd		
x3	1	-	road	Y	P	1	Y	-			D-CD	26	edge		N	Kingaus Xpre	W	-	Eucal	Meltha	
x3	2	-	road	Y	P	1	-	Y			"	"	"		N	"	W	-	Meltha	Eucal	
x3	3	-	road	Y	P	1	Y	-			D-CD	26	edge		N	see list in box (top corphalis)	F	10	Eucal		

663

667

667

Summary/General Comments

2

Map Sheet Number 52

Pre Field Recorder(s) AW

Field Recorder(s) AN/BR 26/4  
77 AN/EH

Swan Bioplan Vegetation Mapping Data

R E M	RE M2	XM AP	LIN TYPE	L I N E A R	M L U	U N I T S	U P L A N D ?	W E T L A N D ?	V I S I T ?	DETAIL/ Area Name	VEG CON	Field date	OBS From	YNOTASS	D E T A I L V I S I T R E Q D	COMMENTS	VEG STRUC/ DENS	FCT	DOMINANTS			
																			1	2	3	
X3	4	Y	road	Y	P	1	Y	Y			D-CO	26	edge		N	Known, old Eucal	F	-	Eucal	Agfle	Euc part	
X3	5	Y	road	Y	P	1	Y	Y			D-CO	26	edge		N	Det. citripdora, Oper hisp Known, old Eucal	F	-	Eucal	Agfle	Euc part	
3	6	-	channel	Y	P											planting			Eucal			
3	7	-	channel	Y	P																	
4	1	-	channel	Y	P	1	-	Y			53	7/7	dist				W		Eucrud	Melrha		
4	2	-	-	-	P	1	-	Y			53	7/7	dist				W		Eucrud	Melrha		
4	3	-	-	-	P	1	-	Y			53	7/7	dist				W		Eucrud	Melrhap		
X4	4	-	-	-	P	1	-	Y			CO-D	26	dist				W		Eucrud	Melrhap		
X4	5	-	channel	Y	P	1	-	Y			"	"	edge				F		Ag Hex			
X4	6	-	channel	Y	P	1	-	Y			CO-D	26	dist			Sect Maria	F		Ag Hex			
X4	7	-	channel	Y	P	1	-	Y			CO-D	26	dist			Sect Maria	F		Ag Hex			
X4	8	-	-	-	P	1	-	Y			CO-D		aerial	HW			W		Agfle			
X4	9	-	-	-	P	1	-	Y			CO-D		aerial	HW			W		Agfle			
X5	1	-	road	Y	P	1	-	Y			CO-D	26	edge				W		Euc rud	Mel rhap	Mel prei	
X5	2	-	road	Y	P	1	Y	-			"	"	"				W		Eucrud	Melrha		
X5	3	-	road	Y	P	2	Y	Y			D-CO	26	tran				F		Eucal Eucrud	Ag Hex Melrhap	Euc rud Mel prei	

Summary/General Comments

3

Map Sheet Number 52

Pre Field Recorder(s) AW

Field Recorder(s) 7/7 AW, EH

Swan Bioplan Vegetation Mapping Data

R E M	RE M2	XM AP	LIN TYPE	L I N E A R	M L U	U N I T S	U P L A N D ?	W E T L A N D ?	V I S I T ?	DETAIL/ Area Name	VEG CON	Field date	OBS From	YNOTASS	D E T V I S R E Q D	COMMENTS	VEG STRU C/D ENS	FCT	DOMINANTS		
																			1	2	3
X6	1	-	-	-	P	1	-	Y			D-0	26/4	dist				W		Mel rhop	Euc rud	
X6	2	-	-	-	P	1	-	Y			"	4	dist				W		Mel rhop	Euc rud	
X6	3	-	-	-	P	1	-	Y			"	"	dist				W		Mel rhop	Euc rud	
X7	1	-	-	-	P	1	Y	-			D-0	26	dist			King aust	F		Euc cal		
X7	2	Y	-	-	P	1	N	Y			D		dist				F		Mel rhop		
X8	1	-	road fence	Y	P	1	Y	-			D-G	26	dist			"Unmade" road	F		Eucal		
X8	2	-	road fence	Y	P	1	Y	-			D-G	26	dist			"	F		Eucal		
X8	3	-	road fence	Y	P	1	Y	-			D-0	26	dist				F		E cal		
X8	4	-	road fence	Y	P	1	Y	N			D-0	26	aerial				F		? Mel rhop		
X8	5	-	-	-	P	1	Y	N			D	26	dist			Sandy rise	F		Euc cal	Ag flex	
<del>X8</del>	<del>6</del>	<del>-</del>	<del>-</del>	<del>-</del>	<del>P</del>	<del>1</del>	<del>-</del>	<del>Y</del>											<del>Mel</del>		
X8	7	-	-	-	P	1	-	Y			D-0		aerial	AW					Mel rha		
X8	8	Y	-	-	P	1	-	Y	N		5	7/7	aerial	AW					Eucrud	Mel rha	

Summary/General Comments