

Ag 26/6/06



↖

52/7-2 ↙

52

54

66

40

1-2

1-3

3-1

3-2

3-3

3-4

3-5

3-6

3-7

3-8

3-9

3-10

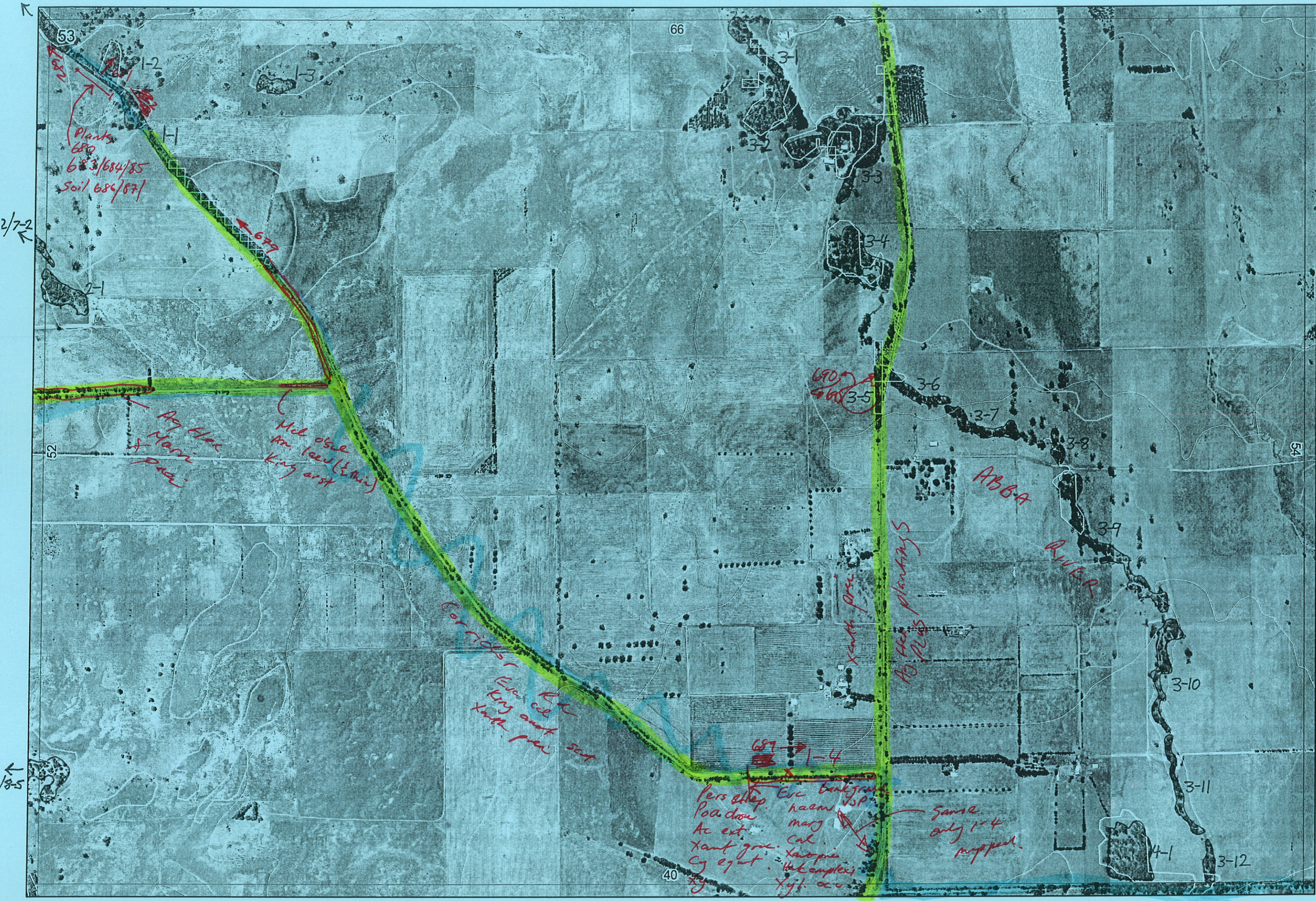
3-11

3-12

1-4

4-1

← 52/8-5



53

66

1-2

3-1

Plants
680
683/684/85
Soil 686/87

3-2

3-3

2/7-2

689

3-4

2-1

690
688

3-6

52

Ag. Har.
Harri
pua

Med. obs.
An. laev (L. H. W.)
King arst

3-5

ABBA

54

RIVER

Corridor

Eric. R. L.
King arst
Xanth. prae

Xanth. prae

To the plantings

3-9

3-10

2/8-5

687
685

1-4

Pers. atrop. Eric. Bankgrass
Poa. drou. haem. sp.
Ac. ext. marg.
Xanth. gr. Cal.
Cy. eq. Xanth. prae
Xy. ac.

Same
only 1-4
mapped.

3-11

40

4-1

3-12

①

Map Sheet Number 53

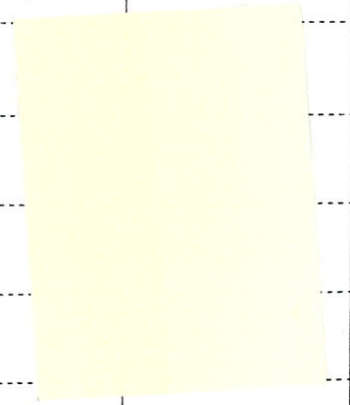
Pre Field Recorder(s) AW

Field Recorder(s) _____

Swan Bioplan Vegetation Mapping Data

R E M	RE M2	XM AP	LIN TYPE	L I N E A R	M L U	U N I T S	U P L A N D ?	W E T L A N D ?	V I S I T ?	DETAIL/ Area Name	VEG CON	Field date 200_	OBS From	YNOTASS	D E T V I S I O N R E Q D	COMMENTS	VEG STRUC/ DENS	FCT	DOMINANTS			
																			1	2	3	
X	1	Y	road	Y	P	3	Y	Y	Y		G	26/4	trans		N	areas in lower veg condition	SC	10b	Csp. whidbor	D. squarrosa	Eucrad	679
X																	F	10b	Eucal	Dangra	Parrot Euc. mang.	
X																	SH	-	Melunc	Halecorat	Kinaw	
X	1	2	-	-	P	1	-	Y	N		D-D	26/4	edge		N	trees over ifshore rock.	W	10b	Eucrad			
X	1	3	-	-	P	1	Y	-	N		D-D	26/4	dist		N		F	-	Eucal			
X	1	4	road	Y	P	1	Y	N	✓		D-G	26	trans		N		W	1a	Euc haem	Euc mang	Xyl. occ.	
X	2	1	-	-	P	1	Y	-			D-D	26/4	dist				F		Eucal	Ag floe		
X	3	1	channel	B	P	1	-	Y			D-CO	26	dist				F		Euc. cal.			
X	3	2	-	-	P	1	-	Y														
X	3	3	-	-	P	1	-	Y			G-YD	26	dist		Y		F		Euc cal.			
X	3	4	-	-	P	1	-	Y			D-D	26/4	dist		N		F		Euc cal			
X	3	5	road	Y	P	1	Y	-			D	26/4	trans			Hybrids Haem/cal. Species List			Eucal	Euc haem		
X	3	6	channel	Y	P	1	-	Y														
X	3	7	"	Y	P	1	-	Y														
X	3	8	"	Y	P	1	-	Y														
X	3	9	"	Y	P	1	-	Y														
X	3	10	"	Y	P	1	-	Y			D-CO		dist									
X	3	11	"	Y	P	1	-	Y			D-CO	26	dist									
X	3	12	channel	Y	P	1	-	Y			D	26/4	edge			Agonis linearifolia	F	-	Marri			
X	4	1	-	-	P	1	Y	-			D-D	26/4	edge			King. aust	F		Eucal	occ Euc mang		

Delete 3-2 -:
digitized with as part of
3-1 by Ag



Summary/General Comments
3-3 Small but looks OK, may be approachable