

Ag



54

67

55

53

↑

↑ 67/5-5

↑

↑

← 40/1-3

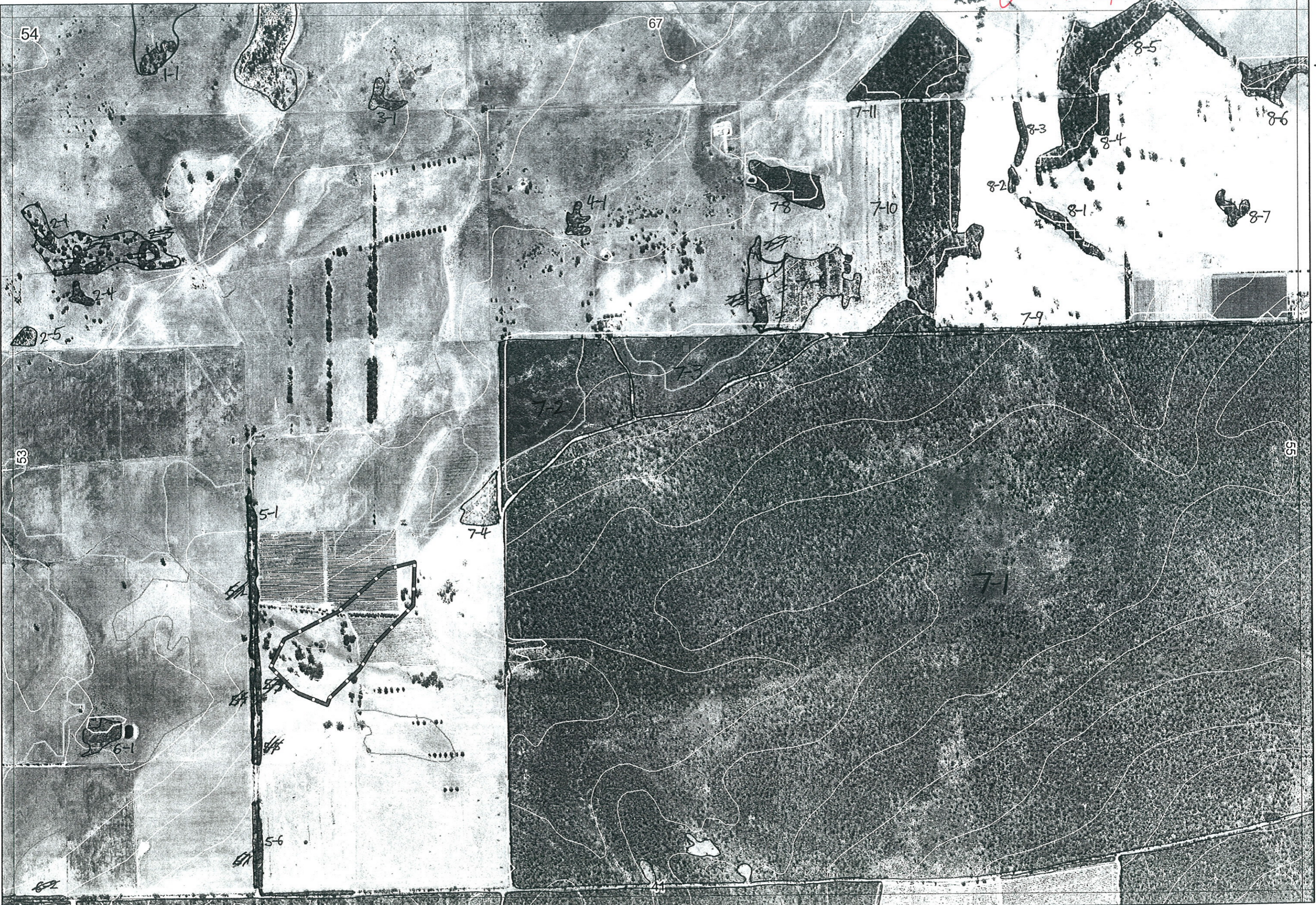
↓ 41/1-1

↓ 41/1-2

↓ 41/1-1

↓ 41/1-1

Ag 14/8/06



↑

↑ 67/5-5

↑

54

67

8-5

1-1

3-1

7-11

8-6

2-1

4-1

7-8

7-10

8-2

8-1

8-7

2-4

2-5

7-9

53

55

5-1

7-4

7-1

6-1

5-6

← 40/1-3

↓ 41/1-1

↓ 41/1-2

↓ 41/1-1

↓ 41/1-1

↑ 67/5-5

↑

↑

54

67

1-1

3-1

7-11

8-5

8-6

2-1

2-3

4-1

7-8

7-10

8-3

8-4

2-4

7-7

8-1

8-7

2-5

7-5

7-6

7-9

53

7-3

55

5-1

7-2

7-4

7-1

5-2

5-3

5-4

5-5

5-6

5-7

6-1

6-2

↓ 41/1-9

↓ 41/1-2

↓ 41/1-1

↓ 41/1-1



1

Map Sheet Number 54

Pre Field Recorder(s) AW

Field Recorder(s)

Swan Bioplan Vegetation Mapping Data

D/E - 7/1/06

R E M	RE M2	XM AP	LIN TYPE	L I N E A R	M L U	U N I T S	U P L A N D ?	W E T L A N D ?	V I S I T ?	DETAIL/ Area Name	VEG CON	Field date 200_	OBS From	YNOTASS	D E T V I S R E Q D	COMMENTS	VEG STRU CTURE DENS	FCT	DOMINANTS		
																			1	2	3
X1	1	-	-	-	P	1	N	Y			27/7	dist			N	? CALM Ironstone area	SC		① Herb old	Perell	② Eucypt (W)
X2	1	-	-	-	P	1	Y	-			27/7	dist			W	join to 2-2, 2-3	W		Melpre		
2	2	-	-	-	P	1	Y	-													
2	3	-	-	-	P	1	Y	-													
X2	4	-	-	-	P	1	Y	-			27/7	acid	AW		W	same as 2-1	W		Melpre		
2	5	-	-	-	P	1	Y	-								planting?					
X3	1	-	-	-	P	1	-	Y			27/7	dist			N		SC		Melpre	Malinc	
X4	1	-	-	-	P	1	Y	-			27/7	dist					SC			C. sp. whicher	
X5	1	-	road	Y	P	1	Y	-			27/7	dist					F		Eucal	Eucypt	Eucypt?
5	2	-	"	Y	P	1	Y	-													
5	3	-	"	Y	P	1	Y	-													
5	4	-	"	Y	WS	1	Y	-													
5	5	-	"	Y	WS	1	Y	-													
X5	6	-	road	Y	WS	1	Y	-			27/7	dist					F		Eucypt	Eucypt	
5	7	-	road	Y	WS	1	Y	-													
X6	1	-	-	-	P	1	-	Y							W	Cables report Tutunup Sth	W		Melpre	Cyater	
6	2	-	road	Y	WS	1	Y	-			27/7	dist				Nashco, Pappi, Hortag, Cya equ, Poldro, Xgachy	F		① Eucal	② Agalin	
X7	1	Y	-	-	WS	4+	Y	Y													

Summary/General Comments

2

Map Sheet Number 54

Pre Field Recorder(s) AW

Field Recorder(s)

Swan Bioplan Vegetation Mapping Data

R E M	RE M2	XM AP	LIN TYPE	L I N E A R	M L U	U N I T S	U P L A N D ?	W E T L A N D ?	V I S I T ?	DETAIL/ Area Name	VEG CON	Field date	OBS From	YNOTASS	D E T V I S R E Q D	COMMENTS	VEG STRU C T U R E D E N S	FCT	DOMINANTS		
																			1	2	3
7	2	-	-	-	P/WS	4	Y	Y		Scp plots signif flora Reports, TEC								10b			
7	3	-	-	-	WS	4	Y	Y		Scp plots, signif flora. TEC								10b			
X7	4	-	-	-	WS	1	Y	-			CD	7/1	edge				W	-	Bonatt		
					WS	1	Y	-			D							10b	Drysqung	Csp. whicher	
X7	6	-	-	-	WS	2	Y	Y			DCD	7/1	dist			regen	TS		Pultritic	Melthy	Dan plays
					P	1	Y				CD					grazed	TS		C.sp. whicher	Melpre	Eucrad
X7	8	-	-	-	P	1	-	Y			D	7/1	dist				TS		Asp. course?	Melpre	
X7	9	-	road	Y	WS	1	Y	-			DG	7/1	edge			Acas AEMI	Deserio	F	Eucman	Euchae	Eucal (occasional)
X7	10	-	-	-	WS	1	Y	-			D	7/1	edge			DMC'S		F	Jerrab	Euchae	Eucal?
X7	11	-	-	-	P	1	Y	-	Y		G	27/4	dist	-	Y			F	Eucnaem	Bonatt	
X8	1	-	channel	Y	WS	1	Y	Y			CD	7/1	dig					F	Eucal	Eucman	
X8	2	-	channel	Y	WS	1	Y	Y			CD	7/1	dist			as in 8-1		F	Eucal	Eucman	

Summary/General Comments

3

Map Sheet Number 54

Pre Field Recorder(s) AW

Field Recorder(s) _____

Swan Bioplan Vegetation Mapping Data

R E M	RE M2	XM AP	LIN TYPE	L I N E A R	M L U	U N I T S	U P L A N D ?	W E T L A N D ?	V I S I T ?	DETAIL/ Area Name	VEG CON	Field date 200_	OBS From	YNOTASS	D E T Y I S R E Q D	COMMENTS	VEG STRUC/ DENS	FCT	DOMINANTS		
																			1	2	3
X83	-	-	channel	Y	WS	1	-	Y			8-00 7/9	dist				as in 81	F		Euccal	Euc mar	
X84	-	-	-	-	WS	1	Y	-			0-01 7/9	dist					F		Eucmar	Euccal	Euchaet?
X85	Y	-	-	-	WS	1	Y	-	Y		0-D 27/6	dist		N			F		Euchaem	Banatt	Eucemar
X86	Y	-	-	-	WS	1	Y	-			0-D 27/6	dist					F		Euccal	Euc mar	
X87	-	-	-	-	WS	1	Y	-			0-D	aerial	AW	N			F		Euccal		

Summary/General Comments

AW