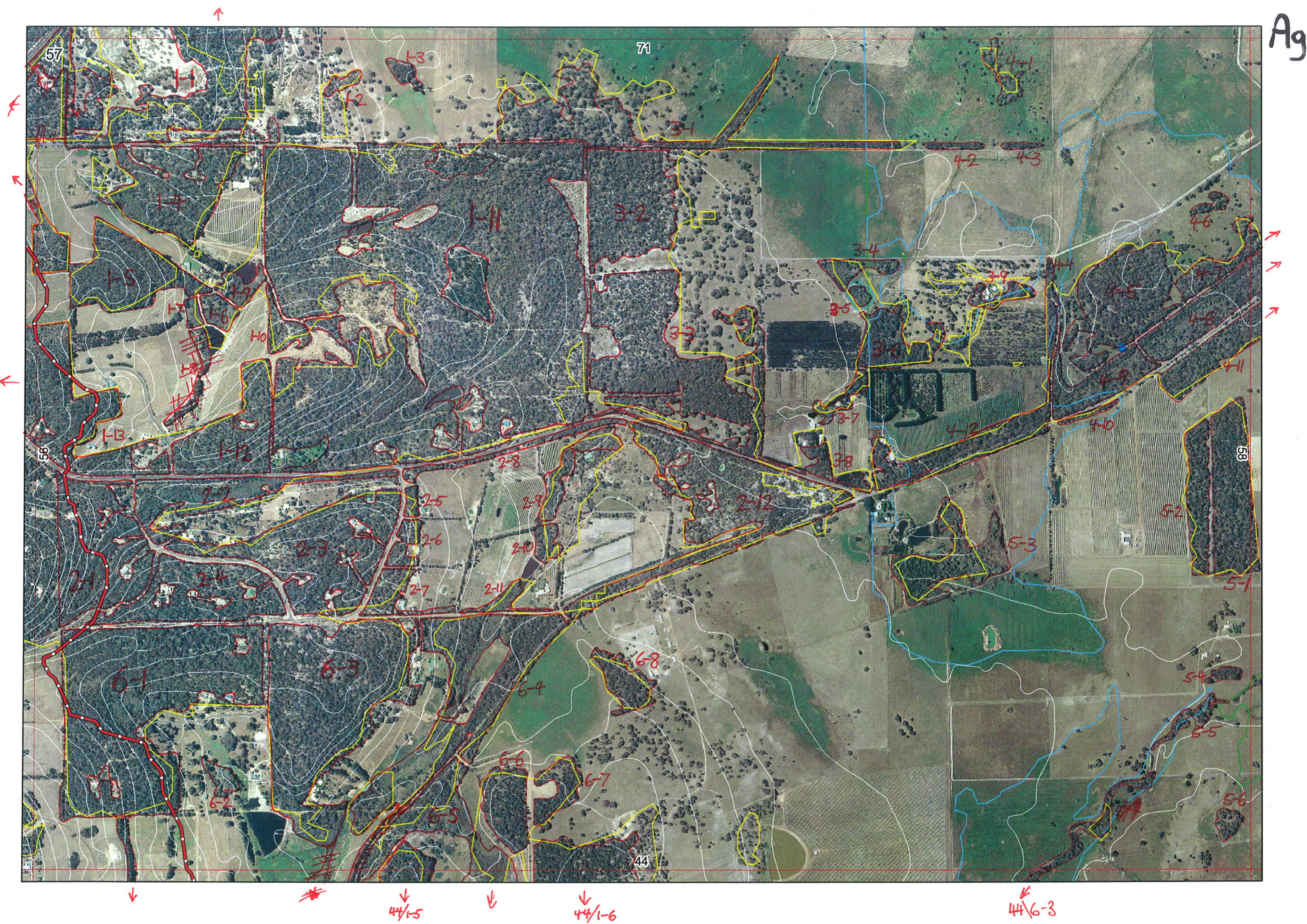


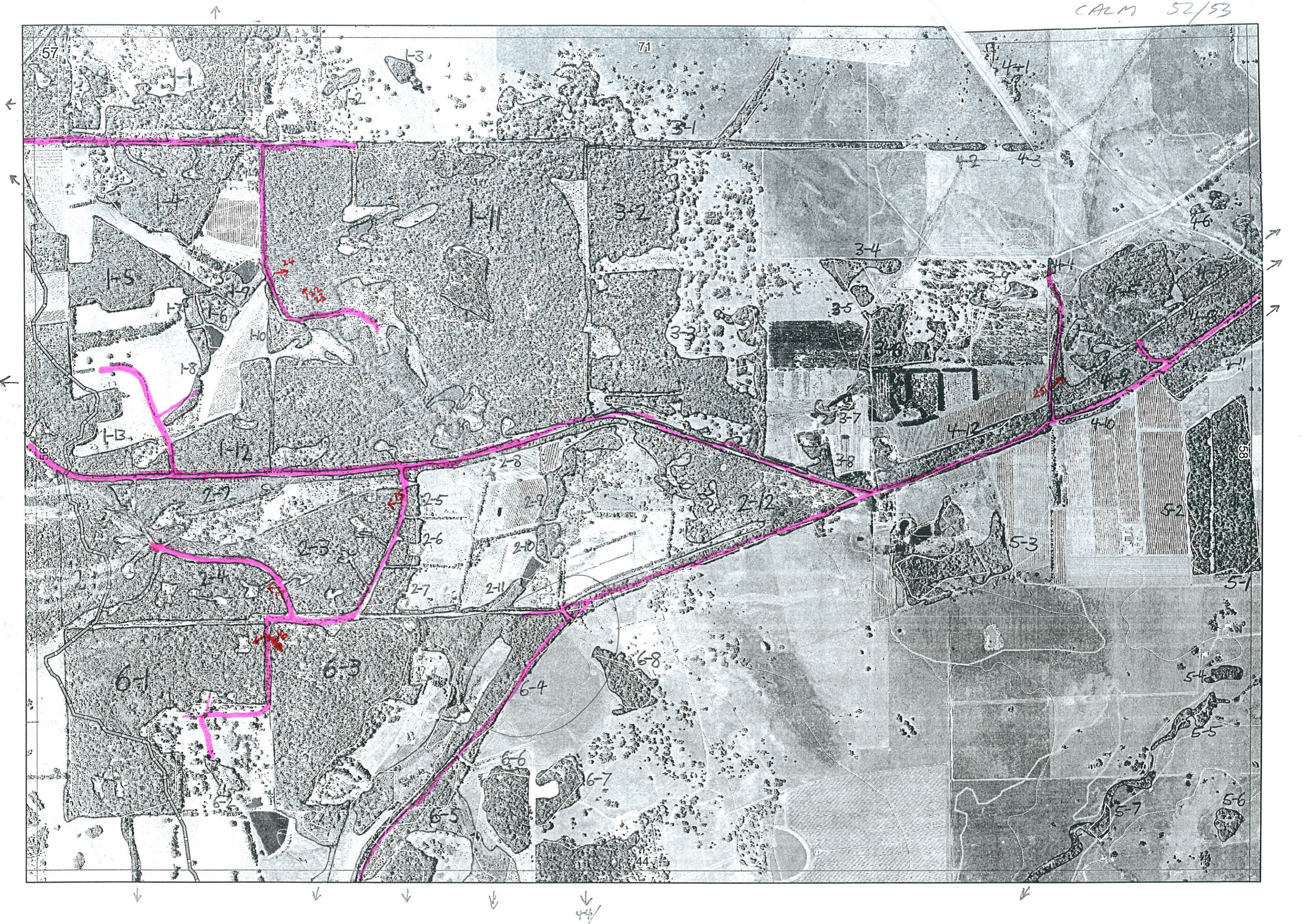
Ag



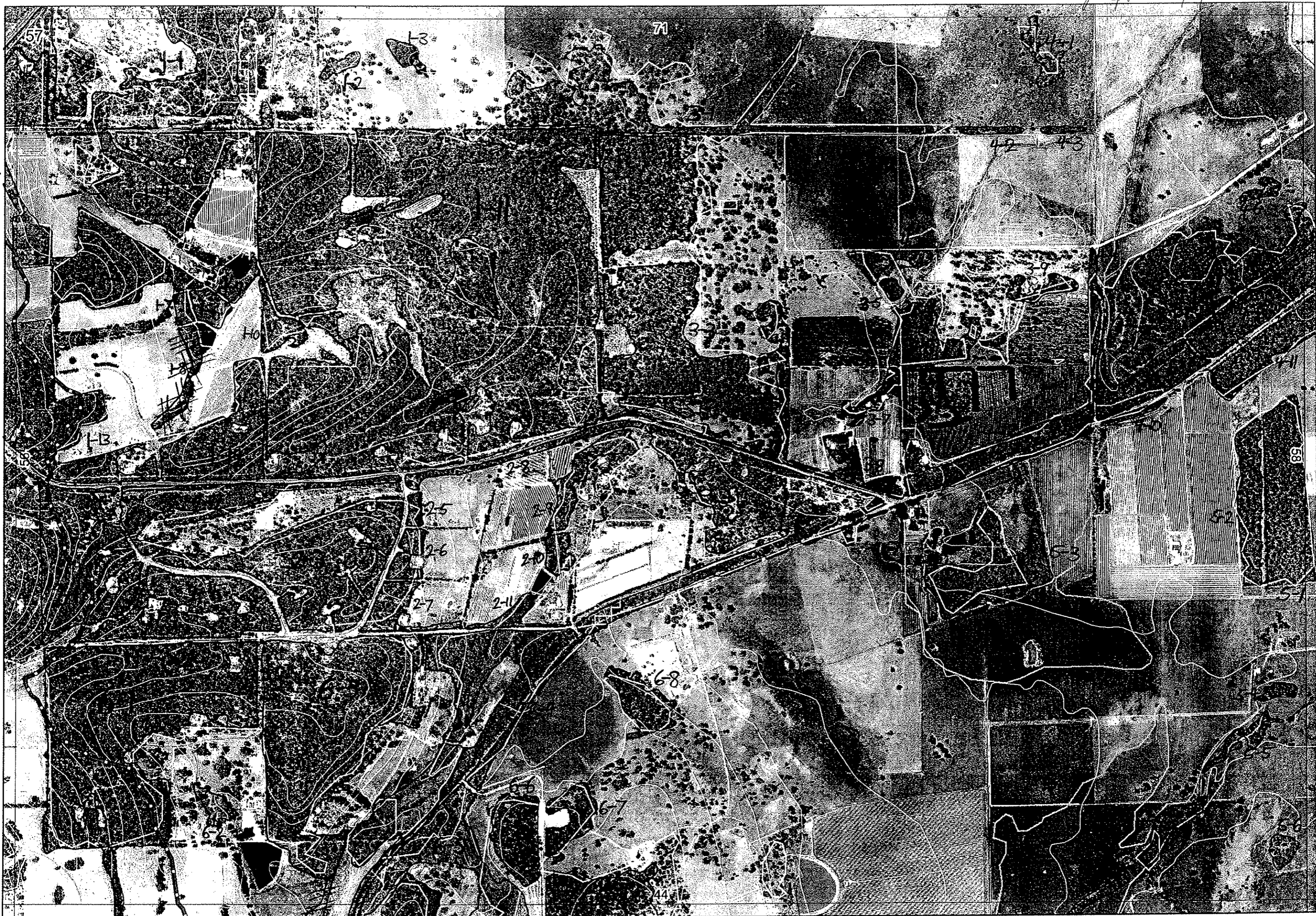
44/1-5

44/1-6

44/6-3



Hq dept 26/6/06



↑
↑
↑
↑

↑
↑
↑

↓

↓

↓
44/1-5

↓

↓
44/1-6

↓
44/6-3

1

Map Sheet Number 57

Pre Field Recorder(s) AW

Field Recorder(s)

Swan Bioplan Vegetation Mapping Data

R E M	RE M2	XM AP	LIN TYPE	L I N E A R	M L U	U N I T S	U P L A N D ?	W E T L A N D ?	V I S I T ?	DETAIL/ Area Name	VEG CON	Field date 2006	OBS From	YNOTASS	D E T E R M I N E D	COMMENTS	VEG STRU CTURE DENS	FCT	DOMINANTS		
																			1	2	3
1	1	Y	-	-	WS	1	Y	-	Y						Y	<i>Banksia laevigata</i>	F				
-1	2	-	-	-	WS	1	Y	-				22/6	dist				F		Ago flex	Euc marg	Banks atten
-1	3	-	-	-	P	1	Y	-				22/6	dist				F		Euc cal		
-1	4	-	-	-	WS	2	Y	Y			VG	22/6	edge			<i>Dalrymplea harknessii</i>	F		Ago flex	Euc marg	Allo fras
											VG	22/6	edge				F		Euc cal	Euc marg	Yucca praevisci
-1	5	Y	-	-	WS	1	Y	-			G	22/6	aerial				F		Euc marg	Euc cal	Banks grand
-1	6	-	-	-	WS	1	-	Y			G	21/6	edge				Sh		Ago lin		
-1	7	-	-	-	WS	1	-	Y			G	21/6	edge			same as 1-6	F				
-1	8	-	-	-	WS	1	-	Y		plantings							F				
-1	9	-	-	-	WS	1	-	Y					aerial	AW	<i>Cyathochaeta leptophylla</i> same as 1-6	F		Euc cal	Ago lin		
-1	10	-	-	-	WS	1	Y	-			G	21/6	edge				F		Euc marg	Euc cal	Banks grand
-1	11	-	-	-	WS/P	3	Y	Y			G-VG	21/6	edge		Y	sandy soils, King glab → Bass lin, middle, lanky soil →	F		Euc marg	All fras	Euc cal
																Blackbutt (Toby list)	F		Euc marg	Euc cal	Kingia
																Blackbutt	F		Ago lin	Mid dil	Acc did
-1	12	-	-	-	WS	2	Y	Y			VG-E	21/6	edge			Blackbutt	F		creekline as in 2-2		
																	F		* Euc marg	Euc cal	Banks grand
-1	13	Y	-	-	WS	1	Y	-			G-VG	21/6	edge			All fras, Ago flex	F		Euc marg	Euc cal	Banks grand
-2	1	-	-	-	WS	2	Y	Y			VG-E	21/6	edge				F		Euc marg	Euc cal	as in 2-4
																Blackbutt - ? guess based on 2-2	Sh		Ago lin	Try flori	

Summary/General Comments

2

Map Sheet Number 57

Pre Field Recorder(s) ACV

Field Recorder(s)

Swan Bioplan Vegetation Mapping Data

R E M	RE M2	XM AP	LIN TYPE	L I N E A R	M L U	U N I T S	U P L A N D ?	W E T L A N D ?	V I S I T ?	DETAIL/ Area Name	VEG CON	Field date 200_	OBS From	YNOTASS	D E T V I S I O N R E Q D	COMMENTS	VEG STRU C/DENS	FCT	DOMINANTS		
																			1	2	3
22	-	-	-	-	WS	2	Y	Y			Vg-E	21/6	edge				F		Euc marg	Euc cal	as in 2-4
																blackbutt around the edges	Sh		Ago lin	Try Flax	
23	-	-	-	-	WS	1	Y	-			Vg-E	21/6	edge			loamy soils	F		Euc marg	Euc cal	Bank guard
																Das hook	F		Euc marg	Euc cal	Bank guard
24	-	-	-	-	WS	2	Y	-			G-Vg	21/6	edge				F		Bank atten	Euc marg	Kunzea glab
25	-	-	-	-	WS	1	Y	-			Vg-E	21/6	edge			Das hook	F		Euc marg	Euc cal	Bank guard
26	-	-	-	-	WS	1	Y	-				21/6	edge			same as 2-5	F				
27	-	-	-	-	WS	1	Y	-				21/6	edge			same as 2-5	F				
28	-	-	road	Y	WS	1	Y	-			G	21/6	edge				F		Euc marg	Euc cal	
29	-	-	channel	Y	P	1	-	Y			G	21/6	edge				F		Euc marg	Euc cal	
210	-	-	channel	Y	P	1	-	Y			G	21/6	aerial				F		Apo lin		
211	-	-	channel	Y	P	2	-	Y			G	22/6	dist				F		Euc marg	Euc cal	
212	-	-	road	B	P	2	Y	-			G-D	21/6	edge			All gras, eye @ eye loamy soils, hark covered	F		Euc marg	Euc cal	
31	-	-	road	B	P	1	Y	-			D	22/6	aerial				F		Ago flex	Euc cal	
32	-	-	-	-	P	1	Y	-			G-Vg	22/6	aerial			Sandy soils	F		Euc marg	Euc cal	Allo fras
33	-	-	-	-	P	2	Y	Y			G-D	21/6	edge				F		Euc cal	Euc marg	Ago flex
																	F		Euc marg	Euc cal	Allo fras
34	-	-	-	-	P	1	-	Y									W				
35	-	-	-	-	P	1	-	Y									F				

photo 15
photo 16

Summary/General Comments

3

Map Sheet Number 57

Pre Field Recorder(s) AW

Field Recorder(s)

Swan Bioplan Vegetation Mapping Data

R E M	RE M2	XM AP	LIN TYPE	L I N E A R	M L U	U N I T S	U P L A N D ?	W E T L A N D ?	V I S I T ?	DETAIL/ Area Name	VEG CON	Field date 200_	OBS From	YNOTASS	D E T V I S I O N R E Q D	COMMENTS	VEG STRUC/ DENS	FCT	DOMINANTS			
																			1	2	3	
36	-	-	-	-	P	2	Y	Y									F					
37	-	-	channel	Y	P	1	-	Y									W					
38	-	-	-	-	P	1	Y	-			D.	2/6	edge				F			Agoflex		
39	-	-	-	-	P	1	Y	-		mostly plantings	CD						F			Eucal		
41	-	-	-	-	P	1	-	Y									W			mel		
42	-	-	road	Y	P	1	Y	-									F			Eucal		
43	-	-	road	Y	P	1	Y	-									F			Eucal		
44	-	-	road	Y	P	2	Y	-			G-VG	2/6	edge			mel pries, mel lateritia, ^{low veg} Callanc, Aca div, bracken, ^{bank 1.15}	F			Eucal	Euc mar as in 4-8.	Agoflex
45	-	-	-	-	P	1	Y	-			D-G	2/6	edge			heavily grazed w/stovey.	F			Eucal	Euc marg	
46	-	-	-	-	P	1	Y	-			D-CD	2/6	distance				F			Eucal	Agoflex	
47	Y	-	-	-	P	2	Y	-			D-CD	2/6	distance				F			① Eucal	② Eucal	③ Agoflex
48	Y	-	rail	Y	P	1	Y	-			VG-E	2/6	distance			Scp plot cya equ	F	1b		Eucal	Eucmar	
49	-	-	rail	Y	P	2	Y	-			VG-E	2/6	edge			Frogs same as 4-8. Boss ornata, Acaea flagg, Hakea serrat.	F	1b		Eucal	Eucmar	③ blackbutt community as in 4-4
410	-	-	road	Y	P	1	Y	-			VG	2/6	edge			marri fringe adjoining	W			Mel pries	Mel vim	
411	-	-	-	-	P	1	Y	-			VG	2/6	edge			Same as 4-8	F	1b		Eucal	Eucmar	
412	-	-	rail	Y	P	1	Y	-			VG	2/6	edge			Acaea flagg Hakea cernat Hakea varia Hakea rus	F	1b		Eucal	Eucmar	Agoflex
51	Y	-	-	-	P	1	Y	-			D	2/6	dist				F	-		Eucal	Eucmar	Agoflex

* only in 4-9

Summary/General Comments

4

1947-1948

Map Sheet Number 57

Pre Field Recorder(s) AW

Field Recorder(s)

Swan Bioplan Vegetation Mapping Data

R E M	RE M2	XM AP	LIN TYPE	L I N E A R	M L U	U N I T S	U P L A N D ?	W E T L A N D ?	V I S I T ?	DETAIL/ Area Name	VEG CON	Field date 200_	OBS From	YNOTASS	D E T V I S R E Q D	COMMENTS	VEG STRUC/ DENS	FCT	DOMINANTS		
																			1	2	3
52	-	-	-	-	P	1	Y	-			D	21/6	aerial	AW	- Same as S-1	F		Eucal	Eucmar	Agolle	
53	-	-	-	-	P	1	-	Y			D-G	21/6	cl. stage			F		Mel rhaph	mel pries	Vim junc	
54	-	-	-	-	P	1	Y	-								F		Eucal			
55	-	-	channel	Y	P	1	-	Y								F					
56	-	-	-	-	P	1	Y	-								F		Eucal			
57	Y	-	channel	Y	P	1	-	Y								F					
61	Y	-	-	-	WS	2	Y	Y			E	21/6	edge		Y All frs, woody fear Ortholaxus cya teret, Rill pini Blackbutt, ?	F		Euc marg	Euc cal	Agoflex	
62	-	-	-	-	WS	1	Y	-			D-CD	21/6	edge			F		Agolle			
63	Y	-	-	-	WS	2	Y	Y			D-G	21/6	edge		report scan A	F		Euc marg	Bank atten	All frs	
64	Y	-	-	-	WS	2	Y	Y			E	22/6	edge		Wet-Gallic decamp report scan C Mer dil Karpis Dreyhook report scan D	F		Euc marg	Euc cal	Agolle	
65	Y	-	-	-	WS	2	Y	Y			G	22/6	edge		Blackbutt	F		Agoli	Agoflex	Eucpat	
66	-	-	-	-	WS	1	Y	-			G	22/6	edge			F		Euc cal	Kan glab		
67	-	-	-	-	WS	1	Y	-			D	22/6	dist			F		Eucmarg	Euc cal		
68	-	-	-	-	WS	1	Y	-			D	22/6	dist			F		Eucal	Euc marg		

photo 16