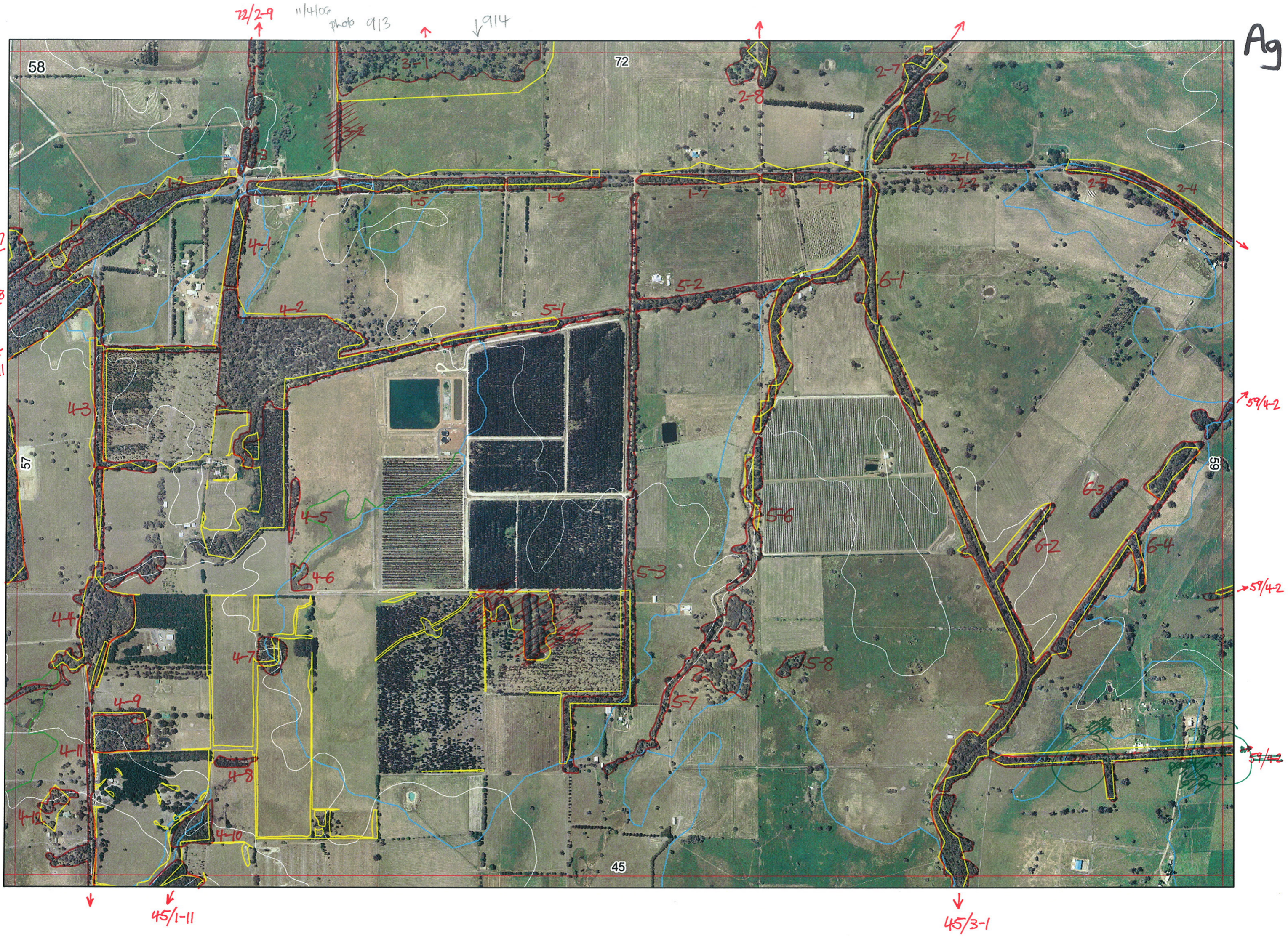
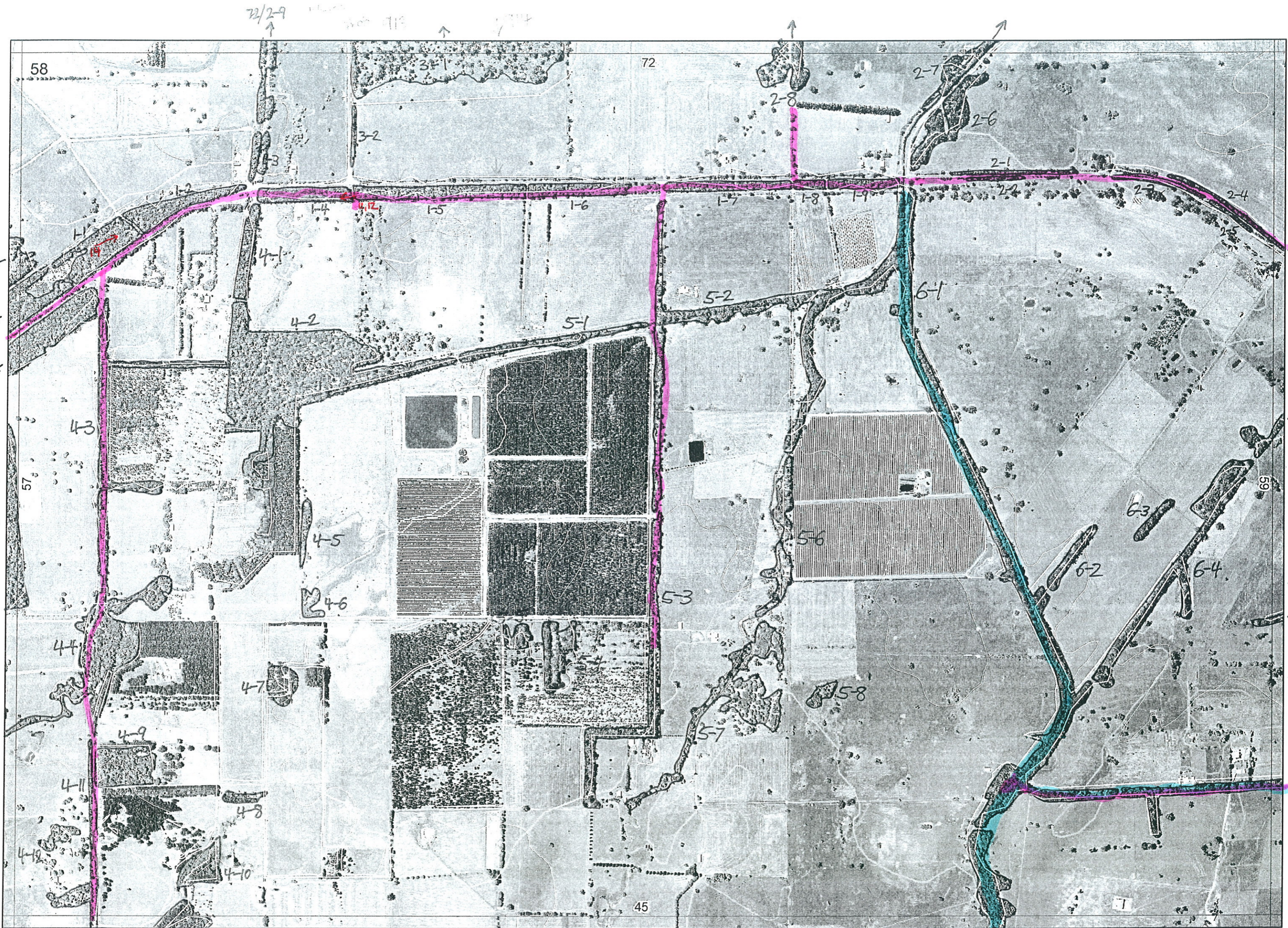


Ag





2/6 Eucal D
dist

45/1-1

45/3-1 Eucal, Ago FLD dist. 2/6/00

R E M	R E M 2	X M A P	L I N E T Y P E	L I N E A R	M L U	U N I T S	U P L A N D ?	W E T L A N D ?	V I S I T ?	D E T A I L / A r e a N a m e	V E G C O N	F i e l d d a t e 2 0 0	O B S F r o m	Y N O T A S S	D E T E R M I N E D ?	C O M M E N T S	V E G S T R U C / D E N S	F C T	D O M I N A N T S		
																			1	2	3
1	3	N	road	Y	P	1	Y	-	N	Yallingup Siding rd water corp flow report	CD	29/4/08	-	-	N	cleared understorey	F	-	marri	peppi	
1	4	N	road	Y	P	1	Y	-	N	"	VG	11/4/08	road	-	N	signed off X-gracilis	F	1b	marri	peppi	Euc mar
1	5	N	road	Y	P	2	Y	Y	Y	"	Ken Va	"	AA "	-		Kingia oz masc tetra	F	1b	marri	peppi	
										"	G-D	"	"	-		This area not clearly defined in report - visit - possibly new	W	10a or 13	Melrha	Halevar	
1	6	N	road	Y	P	2	Y	Y	Y	"	G-D	"	"	-		"	W	10a or 13 new	Melrha	Halevar	Mel vim
										"	G	"	"	-		"	F	1b	marri		
1	7	N	road	Y	P	1	Y	-	N	"	G-D	"	-	-	N	X-gracilis	F	1b	marri	peppi	jarrah
1	8	N	road	Y	P	1	Y	-	N	"	D	"	-	-	N	"	F	1b	marri	peppi	jarrah
1	9	N	road	Y	P	1	Y	-	N	"	D	"	-	-	N	"	F	1b	marri	peppi	jarrah
2	1	N	road	Y	S	1	Y	-	N	"	CD	"	-	-	N	Blackbutt cleared understorey	F	-	marri		
2	2	N	road	Y	S	1	Y	-	N	"	CD	"	-	-	N	"	F	-	marri		
2	3	N	road	Y	S	1	Y	-	N	"	CD	"	-	-	N	"	F	-	marri		
2	4	Y	road	Y	S	1	Y	-	N	"	CD	"	-	-	N	Blackbutt	F	-	marri		
2	5	N	road	Y	S	1	Y	-	N	"	CD	"	-	-	N	"	F	-	marri		
3	1	Y	-	-	-	2	Y	Y	N	"	CD	1/4	dist	-	N	over pasture	W	-	Melrha		
										"	D	1/4	dist	-	N	over dense Kingia + X-gracilis	F	1b	Marri	Eucmar	

photo 11/12 fungi

Summary/General Comments

2

Map Sheet Number 58

Pre Field Recorder(s) AW

Field Recorder(s)

Swan Bioplan Vegetation Mapping Data

R E M	RE M2	XM AP	LIN TYPE	L I N E A R	M L U	U N I T S	U P L A N D ?	W E T L A N D ?	V I S I T ?	DETAIL/ Area Name	VEG CON	Field date 200_	OBS From	YNOTASS	D E T Y I S R E Q D	COMMENTS	VEG STRU C/D ENS	FCT	DOMINANTS		
																			1	2	3
26	-	-	-	-	P	1	Y	-			D-CD	21/6	distance	AV access			F		Euc rudis	Ago flex	
27	Y		channel	Y	P	1	Y	-			D-CD	21/6	distance	"			F		Eucal	Ago flex	
28	Y		-	-	P	2	Y	-			D-CD	21/6	distance	"			F		Ⓢ Eucal	Ⓢ Euc rudis	Ⓢ Mel rhaph
32	-		road	Y	P	1	Y	-		plantings							F		Eucal		
41	-		road	Y	P	1	Y	-			D	21/6	edge				F		Eucal	Ago flex	
42	-		channel	B	P	1	Y	Y			D	21/6	distance	no access			F		Eucal	Ago flex	
43	-		road	Y	P	1	Y	-			D-G	21/6	edge				F		Eucal	Ago flex	
44	Y		channel	B	P	1	Y	Y			D-G	21/6	edge				F		Eucal	Ago flex	
45	-		-	-	P	1	Y	-			D-CD	21/6	aerial	AW			F		Eucal	Ago flex	
46	-		-	-	P	1	-	Y			D-CD	21/6	aerial	AW			F		Mel rhaph		
47	-		-	-	P	1	Y	-			D-CD	21/6	aerial	AW			F		Eucal		
48	-		-	-	P	1	Y	-			D-CD	21/6	aerial	AW			F		Eucal?		
49	-		-	-	P	1	Y	-			G	21/6	edge			Cya equ, All Gas, Mir dil, Kingia	F		Eucal	Eucmar	Ago flex
410	-		-	-	P	1	-	Y		plantings?							F				
411	Y		road	Y	P	1	Y	-			D	21/6	edge			Bank atten, All Gas, Kunz glab.	F		Eucal	Ago flex	Eucmar
412	-		-	-	P	1	Y	-			D-CD	21/6	distance				F		Ago flex		

Summary/General Comments

3

Map Sheet Number 58

Pre Field Recorder(s) AW

Field Recorder(s) _____

Swan Bioplan Vegetation Mapping Data

R E M	RE M2	XM AP	LIN TYPE	L I N E A R	M L U	U N I T S	U P L A N D ?	W E T L A N D ?	V I S I T ?	DETAIL/ Area Name	VEG CON	Field date 200_	OBS From	YNOTASS	D E T V I S R E Q D	COMMENTS	VEG STRUC/ DENS	FCT	DOMINANTS		
																			1	2	3
5	1	-	road	Y	P	2	Y	-			CD-D	2/16	dist	no access			F		① Eucal	② mel rhaph	
5	2	-	road channel	Y	P	2	Y				CD-D	2/16	dist.	no access			F		Eucal		
5	3	-	road	Y	P	1	Y	-			D-CD	2/16	edge			odd mel rhaph	F		Eucal	Agg flex	
5	4	-			P	1	Y	-		plantings							F		Eucal		
5	5	-			P	1	Y	-		plantings							F		Eucal		
5	6	-	channel	Y	P	1	-	Y			D	2/16	distance				F		Agg flex	Euc cal	
5	7	-	channel	B	P	1	-	Y			D	2/16	distance	no access			F		Agg flex	Euc cal	
5	8	-			P	1	Y	-			D	2/16	aerial	AW			F		Eucal	Agg flex	
6	1	-	channel	Y	P	1	Y	-			D-G	2/16	edge			Try Flori	F		Eucal	Agg flex	
6	2	-	fence	Y	P	1	Y	-			D	2/16	aerial	AW			F		Eucal	Agg flex	
6	3	-	fence	Y	P	1	Y	-			D	2/16	aerial	AW			F		Eucal	Agg flex	
6	4	-	channel	Y	P	1	Y	-			D-G	2/16	edge				F		Eucal	Agg flex	
1	1	-				1	Y	-			KG-E	2/16	edge				F		Euc cal	Euc marg	
1	2	-				1	Y	-			KG-E	2/16	edge				F		Euc cal	Euc marg	

photo
14

Summary/General Comments