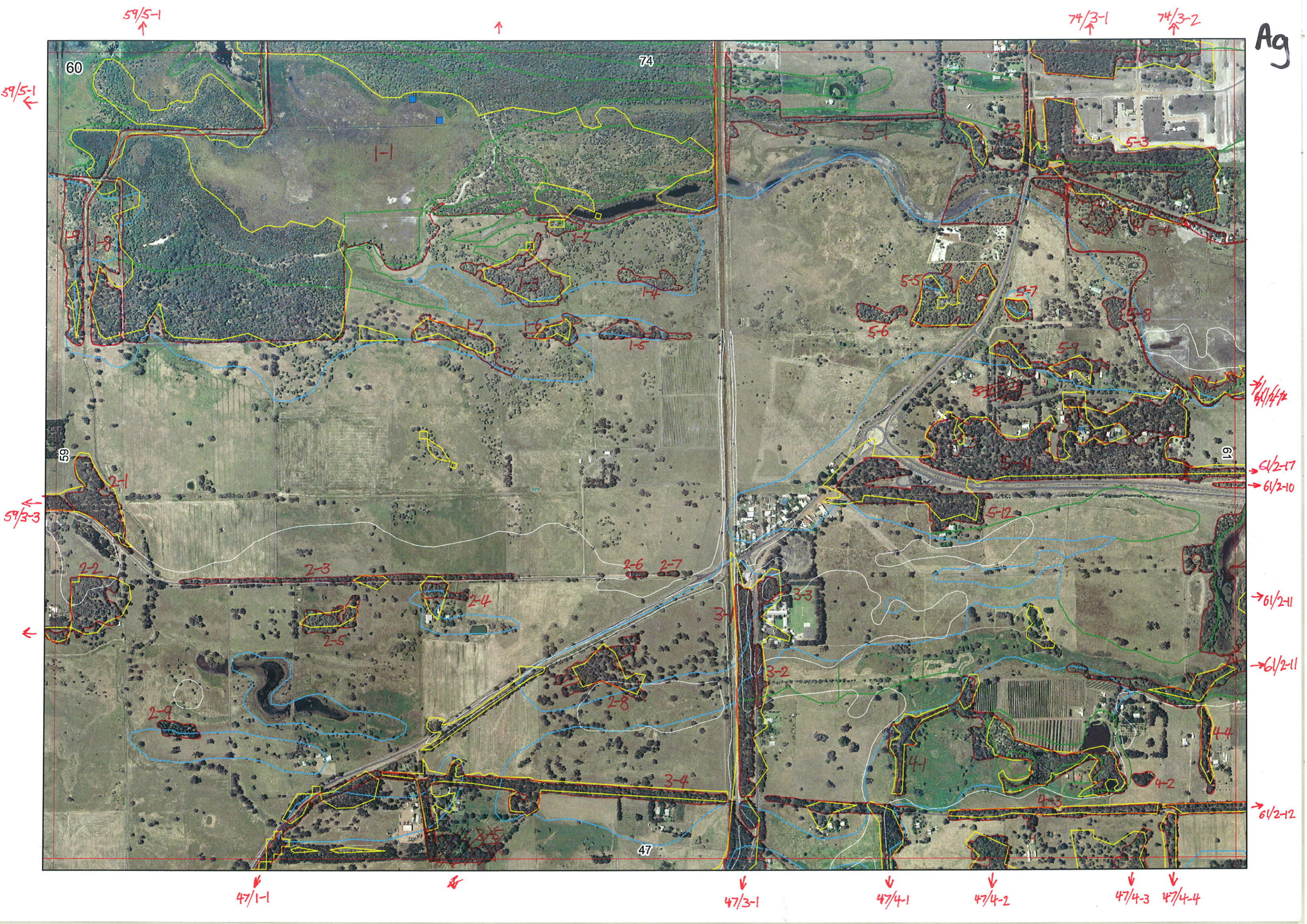


Ag

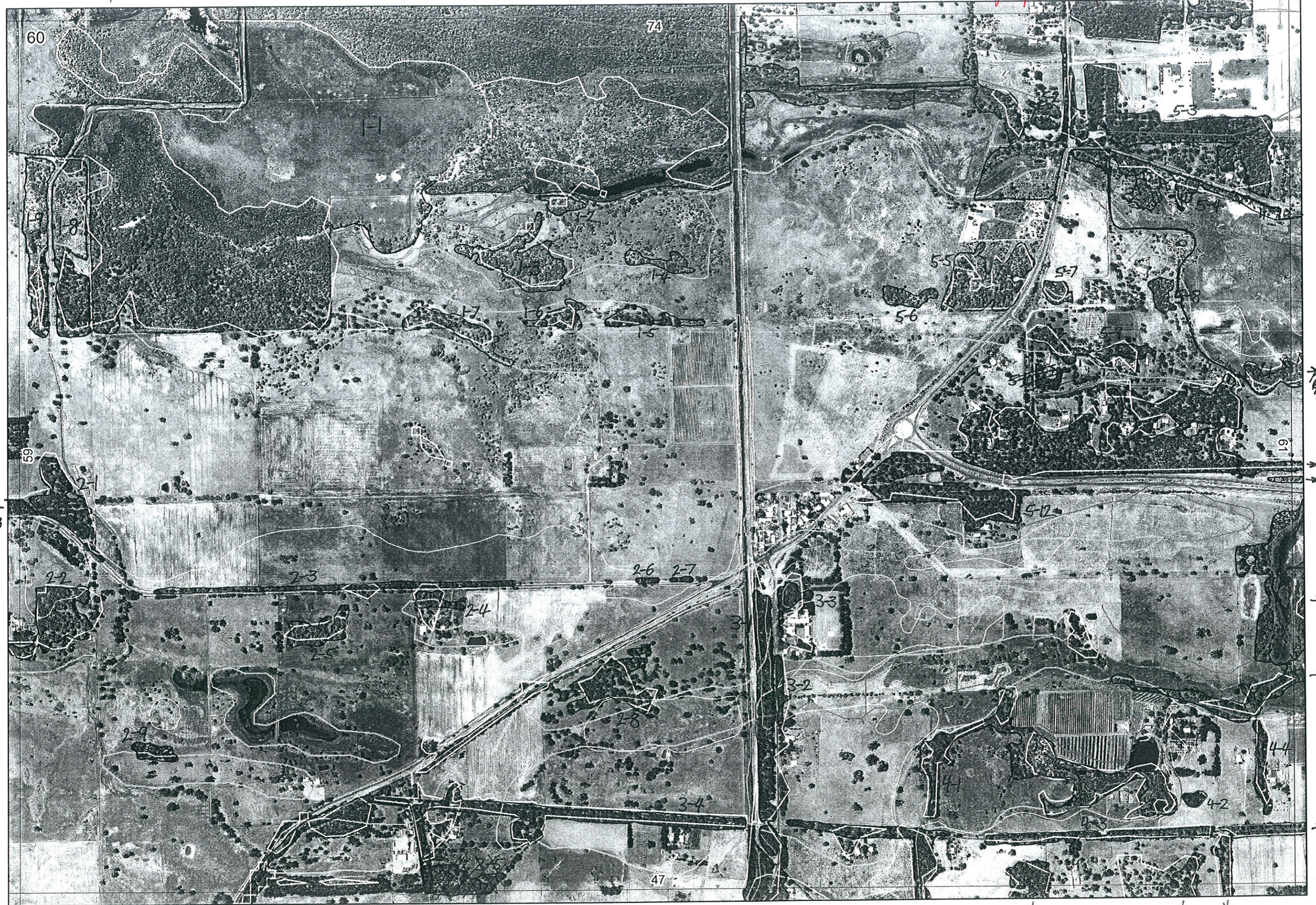


Agdept 26/6/06

74/↑

59/5-1
↑

↑



60

74

5-3

5-5

5-7

5-8

5-6

61/14-12

61/2-17

61/2-10

61/2-11

61/2-1

61/2-15

9/5-1
←

59

61

59/3-3
←

←

47/1-1

8

47/3-1

47/4-1

47/4-2

47/4-3

47/4-4

2-6

2-7

2-4

2-3

2-2

2-9

2-5

2-8

3-4

3-3

3-2

4-4

4-2

47

R E M	RE M2	XM AP	LIN TYPE	L I N E A R	M L U	U N I T S	U P L A N D ?	W E T L A N D ?	V I S I T ?	DETAIL/ Area Name	VEG CON	Field date 200_	OBS From	YNOTASS	D E T V I S R E Q D	COMMENTS	VEG STRUC/ DENS	FCT	DOMINANTS		
																			1	2	3
X11	Y	-	-	Q	4	Y	Y	N		Locke (Possum) NR	VG	2/16	edge		N	WRPs Some Mel cut. <i>Scl</i> plots Bau artie Euc rudrs Cormorant	F	30b	Agofle	Spi glob	Cep gla
																Possum 03 " 04	F				
																Possum 05	F	17	Mel rhaph	Mel vim	Gha tri
																Possum 02 " 01	H	16	Samprive		
																This commercial intap →	F	-	Eucrad	Eucal	
X12	-	-	-	Q	1	-	Y	-			D	2/16	aerial	AW	N		F		Mel rhaph	Mel vim	Mel cut
X13	-	-	-	Q	1	-	Y	-			D	2/16	distance		N		F		Mel cut	Agoflex	Mel rhaph
X14	-	-	-	Q	1	-	Y	-			D	2/16	edge		N		W		Mel cut	Mel rhaph	
X15	-	-	-	S	2	Y	Y				O-CD	2/16	distance		N		F		Euc rudis	Euc cal	
																	F		Mel rhaph		
X16	-	-	-	S	1	Y	-				D	2/16	aerial	AW	N		F		Euc cal	Euc rudis	
X17	-	-	-	S	2	Y	Y				D	2/16	distance		N		F		Euc cal	Euc rudis	
																	W		Mel rhaph		
X18	-	-	-	Q	2	Y	Y				D	2/16	aerial	AW	N		F		Agofle	Euc cal	
																	F		Mel rhaph	Mel vim	Mel cut
X19	-	-	-	Q	2	Y	Y				D	2/16	aerial	AW	N		F		Agofle	Euc cal	
																	F		Mel rhaph	Mel vim	Mel cut
X21	-	-	-	S	1	Y	-				G	2/16	edge			Euc rudis, Blackbutt - Aw species list	F		Agofle	Eucal	
X22	Y	-	-	S	1	Y	-				D	2/16	edge				F			Agofle	
X23	-	road	Y	S	1	Y	-	N			O-CD		aerial	AW	N		F	-	Eucal	Agofle	

photo 8

photo 9

Summary/General Comments

2

23/6 AW, E², DC

Map Sheet Number 60

Pre Field Recorder(s) AW

Field Recorder(s)

Swan Bioplan Vegetation Mapping Data

R E M	RE M2	XM AP	LIN TYPE	L I N E A R	M L U	U N I T S	U P L A N D ?	W E T L A N D ?	V I S I T ?	DETAIL/ Area Name	VEG CON	Field date	OBS From	YNOTASS	D E T V I S R E Q D	COMMENTS	VEG STRU CTURE DENS	FCT	DOMINANTS		
																			1	2	3
X2	4	-	-	-	S	1	Y	-			D	21/6	edge				F		Agofle		
X2	5	-	-	-	S	1	Y	-			D	21/6	edge				F		Agoflex	Euc rudis	
X2	6	-	road	Y	S	1	Y	-	N		CD-D		aerial	AW	N		F		Eucal	Agofle	
X2	7	-	road	Y	S	1	Y	-	N		CD-D		aerial	AW	N		F		Eucal	Agofle	
X2	8	-	-	-	S	1	Y	-			S3	23/6	edge				F		Eucal	Agofle	
X2	9	-	-	-	P	1	Y	-			S3	23/6	aerial	AW			F		Eucal		
X3	1	-	road	Y	P	1	Y	-			D	24/5	E		N		F		Eucal Euc rud	Agofle Mel rhaps	
X3	2	-	road	Y	P	1	Y	-			D	24/5	E		N		F		as for	3-1	
X3	3	-	-	-	S	1	Y	-			CD-D	24/5	E		N	Banksia littoralis	F		Eucal	Agofle	
X3	4	-	road	Y	P	2	Y	Y			CD-D	24/5	E		N		F		Eucal	Agofle	
X3	5	Y	-	-	P	1	Y	-									F		Mel rhaps	Euc rud	
X4	1	-	channel	B	P	2	Y	Y			CD-D	24/5	dist		N		F		Eucal		
																	F		Mel rhaps	Euc rud	
X4	3	-	road	Y	P	1	Y	f			S3	23/6	edge				F		Eucal	Agofle	
X4	4	-	fence	Y	P	1	Y	-			S3	23/6	dist				F		Eucal	Agofle	
X5	1	-	fence	B	Q	3	Y	Y			D	24/6	edge			Gahnia upstrey in areas trif	F		Agofle		
																	W		Mel rhaps	Mel cut	Euc rudis
																			Mel rhaps	Mel vum	

Summary/General Comments

R E M	RE M2	XM AP	LIN TYPE	L I N E A R	M L U	U N I T S	U P L A N D ?	W E T L A N D ?	V I S I T ?	DETAIL/ Area Name	VEG CON	Field date 200_	OBS From	YNOTASS	D E T Y I S R E Q D	COMMENTS	VEG STRU C/ DENS	FCT	DOMINANTS			
																			1	2	3	
X5	2	-	-	-	Q	1	Y	-			D	21/6	edge		N		W		Mel rhaph			
X5	3	-	-	-	Q	2	Y	Y			D	21/6	edge		N		F	30b	Agofle			
												21/6	edge		N		F		Mel rhaph	Euc rudis		
X5	4	-	-	-	Q	3	Y	Y			G-D	21/6	edge		N		H W		② samphire ① Mel rhaph	④ Euc rudis	③ mel rhaph ③ mel viminea	
X5	5	-	-	-	Q	1	-	Y			G	21/6	edge		N		W	17	Mel vim	Mel rhaph	Aha tri	
X5	6	-	-	-	Q	1	-	Y			D	21/6	distance		N		W		Mel rhaph	Mel cut		
X5	7	-	-	-	Q	1	Y	-			D	20/5	E		N	(Surrounded by Euc rudis	F		Mel rhaph			
X5	8	-	-	-	Q	1	Y	-			D	20/5	E		N		F		Mel rhaph			
X5	9	-	-	-	S	1	Y	-			D	20/5	E		N		F		Euc rud	Mel rhaph		
X5	10	-	-	-	S	1	Y	-		plantings							F		Eucal	Agofle		
X5	11	Y	-	-	S	1	Y	-			16-G	24/5	E		N	Euc rudis, more degraded comm	F		Euc palme Euc rudis	Eucal	Agofle	
X5	12	-	-	-	S	1	Y	-			16-G	20/5	E		Y		F		Euc rud			
											16-G	20/5	E		Y		F		Euc palme	Eucal	Agofle	
#2												23/6				plantings						

Summary/General Comments