

Ag



→76/3-2

→76/3-1

←

←

←

←

→

→

→62/5-1

↓

↓

↓

↓48/6-5

↓48/6-4

↓48/5-3

↓48/5-2

↓48/5-1

Ag 14/8/06

75/2-1
↑

75/2-2
↑



76/3-2

76/3-1

62

62/5-1

61

75

60

48

49/6-5

49/6-4

48/5-3

48/5-2

48/5-1

←

←

←

←

→

→

↓

↓

↓

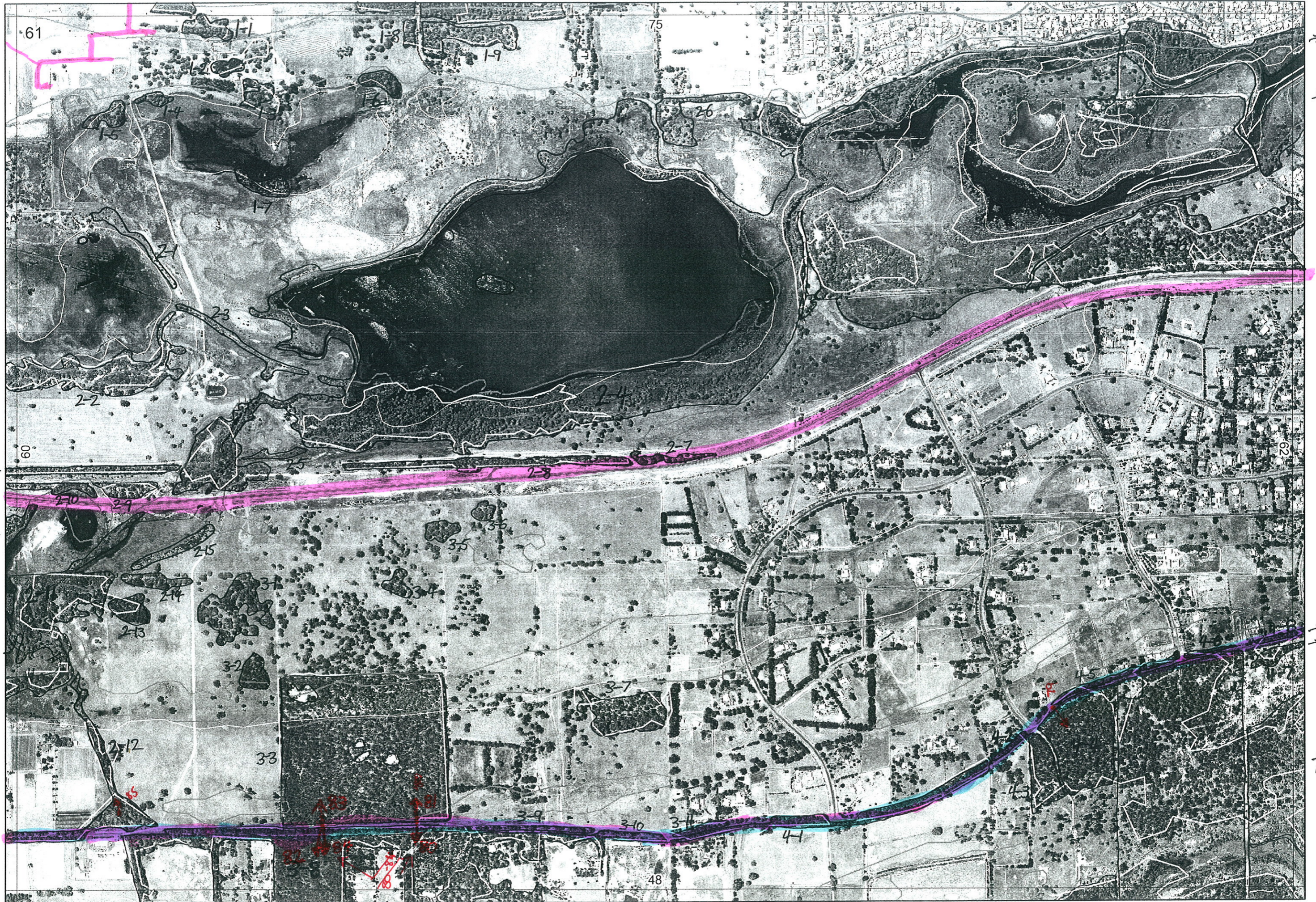
↓

↓

↓

↓

↓



61

75

62

60

62

48/6-5

48/6-4

48/5-3

48/5-2

48/5-1

1-1

1-2

1-3

1-4

1-5

1-7

1-8

1-9

2-6

2-1

2-2

2-3

2-4

2-7

2-8

2-10

2-15

2-14

2-13

2-12

3-2

3-3

3-4

3-5

3-6

3-7

3-9

3-10

3-11

4-1

48

75/

75/

←

←

←

→

→

↖

↗

↓

↓

↓

↓

↓

↓

↓

↓

5/7 AW, EH

Map Sheet Number 61

Pre Field Recorder(s) MW

Field Recorder(s) 23/6 AW, EH, D

Swan Bioplan Vegetation Mapping Data

R E M	RE M2	XM AP	LIN TYPE	L I N E A R	M L U	U N I T S	U P L A N D ?	W E T L A N D ?	V I S I T ?	DETAIL/ Area Name	VEG CON	Field date 2006	OBS From	YNOTASS	D E T V I S R E Q D	COMMENTS	VEG STRUC/ DENS	FCT	DOMINANTS		
																			1	2	3
X1	1	-	-	-	Q	1	Y	-	Y		5	23/6	dist				F		Agofle		
X1	2	-	-	-	Q	1	Y	-	N		5	5/7	aerial	AW			F		Agofle		
X1	3	-	-	-	Q	1	Y	Y	N		5	5/7	aerial	AW			F		Agofle	Eucrud	
X1	4	-	-	-	Q	1	-	Y	Y		5	5/7	dist				W		Eucrud	Agofle	
X1	5	-	-	-	Q	1	-	Y	Y		5	5/7	dist				W		Eucrud	Agofle	
X1	6	-	-	-	Q	1	-	Y			5		aerial	AW		maple plantings	F		Mulsp		
X1	7	-	-	-	Q	1	-	Y	Y		47	5/7	dist				W		Melrha	Melcut	
X1	8	-	-	-	Q	1	Y	-	N		5	5/7	aerial	AW			F		Agofle		
X1	9	-	-	-	Q	1	Y	-	N		5	5/7	aerial	AW			W		Agofle		
2	1	-	channel	Y	Q	1	-	Y													
2	2	Y	-	-	S	2	Y	Y										F		Agofle	
																		W		Mel	
X2	3	-	channel	Y	Q	1	-	Y			000		aerial				H		Melrha	Sarcocornia	
X2	4	Y	-	-	Q	5	Y	Y	Y		3	23/6	dist		Y		H		Samphires		
																		W		Melcut	Melvim
																		W		Melrha	Eucrud
																		S		Juncus sp.	Gah tri
																		F		Agofle	

Summary/General Comments

Map Sheet Number 61

Pre Field Recorder(s) AW

Field Recorder(s) 23/6 AW, RH, EC

Swan Bioplan Vegetation Mapping Data

R E M	RE M2	XM AP	LIN TYPE	L I N E A R	M L U	U N I T S	U P L A N D ?	W E T L A N D ?	V I S I T ?	DETAIL/ Area Name	VEG CON	Field date 2006	OBS From	YNOTASS	D E T V I S R E Q D	COMMENTS	VEG STRU C/ DENS	FCT	DOMINANTS			
																			1	2	3	
X2	5	-	-	-	Q	-	-	Y			5.7	23/6	dist			linked by plantings	W F		Melrha Agoffe	Eucrud Eucal		
X2	6	-	-	-	Q	2	Y	Y			5.3	23/6	edge				F		Agoffe			
X2	7	-	road	Y	S	1	Y	-				23/6				plantings						
X2	8	-	road	Y	S	1	Y	-			5.3	23/6	within			WTEagle Eucrud, Banlit	F		Eucal	Agoffe		
X2	9	-	-	-	P	1	Y	-			5.3	23/6	edge				F		Agoffe	Eucal		
X2	10	Y	road	Y	P	1	Y	Y			5.3	23/6	edge			all planting, mostly native	SH		Melcut			
X2	11	Y	-	-	P	5	Y	Y			4.7	23/6	edge			all linked + enhanced with plantings	F		Eucal ¹		Melunc ³ SM	
																			Eucrud ²	W Melrha ²		
																			Juncus sp ④ S		Samphires H ⑤	
X2	12	Y	road channel	Y	S	2	Y	Y			FD	24/5	E	N		part of 1st	F		Agoffe	Eucal		
																				Melrha		
X2	13	-	-	-	S	1	Y	-			D		aerial AW				F		Agoffe	Eucal		
X2	14	-	-	-	S	1	Y	-			5.3	23/6	dist				F		Agoffe	Eucrud		
X2	15	-	-	-	S	1	-	Y			5	23/6	dist			plantings, mostly natives						
X2	16	Y	-	-	S	1	Y	-			5.3	23/6	dist			Eucrud, Melrha	F		Agoffe	Eucal		

Summary/General Comments

3

Map Sheet Number 61

Pre Field Recorder(s) AW

Field Recorder(s) 23/6 AW, EH, DC

Swan Bioplan Vegetation Mapping Data

REM	RE M2	XM AP	LIN TYPE	LINEAR	MLU	UNITS	UPLAND?	WETLAND?	VISIT?	DETAIL/ Area Name	VEG CON	Field date 2002	OBS From	YNOTASS	DET VIS REQ D	COMMENTS	VEG STRUC/ DENS	FCT	DOMINANTS		
																			1	2	3
x3	1	-	-	-	S	1	Y	-			5.3	23/6	dist				W		Agofle	Eucal	
x3	2	-	-	-	S	1	Y	-			5.3	23/6	aerial AW		same as 3-1		F		Agofle	Eucal	
x3	3	-	-	-	S	2	Y	-			VEG	24/5	E		spp. list		F		Kunglb	mel rhap	Eucrud
											VEG	24/5	E				F		Agofle	Eucal	
x3	4	-	-	-	S	1	Y	-			T	23/6	T				F		Agofle	Eucal	
x3	5	-	-	-	S	1	Y	-			I	I	dist				F		Agofle		
x3	6	-	-	-	S	1	Y	-			I	I	I				F		Agofle		
x3	7	-	-	-	S	1	Y	-			COB	24/5	aerial				F		Eucal	Agofle	
3	8	Y	-	-	S	4	Y	Y			VG	24/5	E				F		Kunglb	mel rhap	Eucrud
																	F		Agofle	Eucal	
										gap area need access											
x3	9	-	road	Y	S	1	Y	-				24/5									
x3	10	-	road	Y	S	1	Y	-			D	24/5	E		N	Gesphalium prostratum Banksia attenuata	F		Agofle	Eucal	Eucrud
x3	11	-	road	Y	S	1	Y	-			D	24/5	E		N		F		Agofle	Eucrud	Eucal
x4	1	-	road	Y	S	1	Y	-			D	24/5	E		N	Banksia prostrata Gesphalium prostratum			Eucal	Agofle	Eucrud
x4	2	-	road	Y	S	1	Y	-			D	24/5	E		N		F		Eucal	Agofle	Eucrud
x4	3	-	-	-	S	1	Y	-			Q-VG	24/5	Edge		Y	same as 4-2	F		Bonatt	Agofle	Eucal

Summary/General Comments

4

Map Sheet Number 61

Pre Field Recorder(s) AW

Field Recorder(s) 23/6 AUS, EH, DC Swan Bioplan Vegetation Mapping Data

R E M	RE M2	XM AP	LIN TYPE	L I N E A R	M L U	U N I T S	U P L A N D ?	W E T L A N D ?	V I S I T ?	DETAIL/ Area Name	VEG CON	Field date	OBS From	YNOTASS	D E T V I S R E Q D	COMMENTS	VEG STRUC/ DENS	FCT	DOMINANTS		
																			1	2	3
x44	-	-	-	S	I	Y	-				G-VG	24/5	E		Y		F		Banatta	Agoffe	Eucal
x45	-	road	Y	S	I	Y	-				D	24/5	E		N		F		Eucal	Agoffe	Kunglab
x46	-	road	Y	S	I	Y	-				G	24/5	E		N		F		Euc mang	Kunglab	Agoffe
x47	Y	road	Y	S	I	Y	-				G	24/5	E		N	Kunglab	F		Eucal	Euc mang	Agoffe
x48	Y	road	Y	S	I	Y	-				G-D	24/5	E		N		F		Eucal	Agoffe	
x217	Y	road	Y	S	I	Y	-				S-3	23/6	edge			Eucport	F		Eucal	Peppi	
x218	-	-	-	Q	I	-	Y				47	23/6	dist			Juncus + Gahnia sedges	W		Eucrud	Melra	

Summary/General Comments